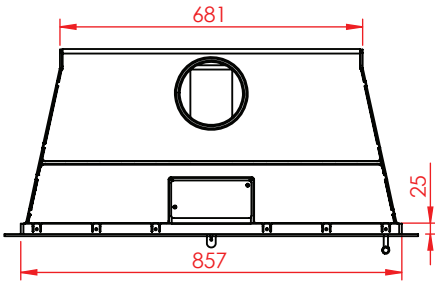
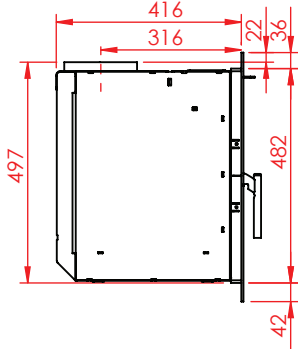
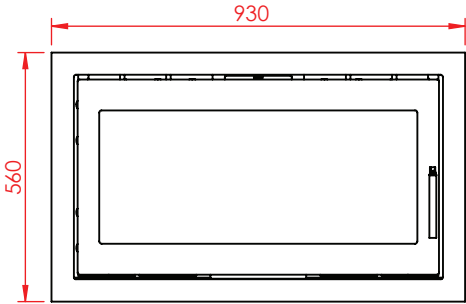
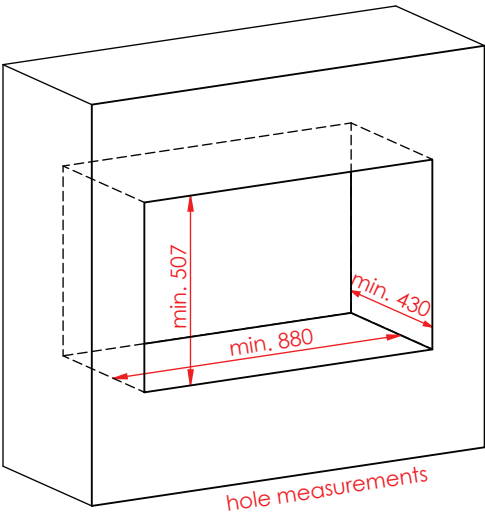
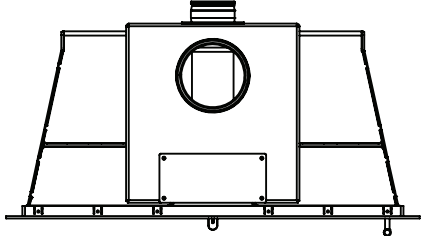
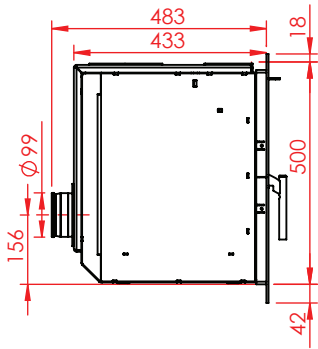
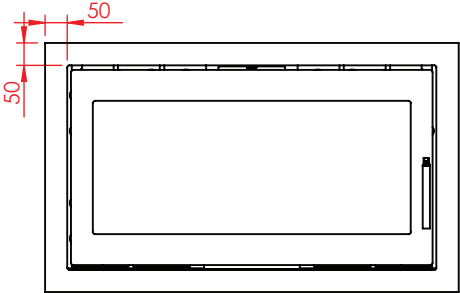
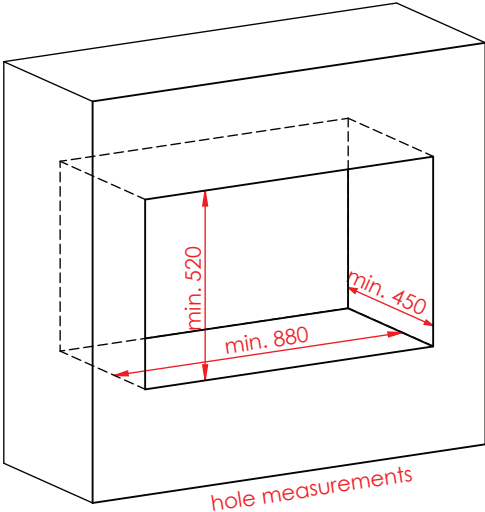


Jupiter 500 - 850

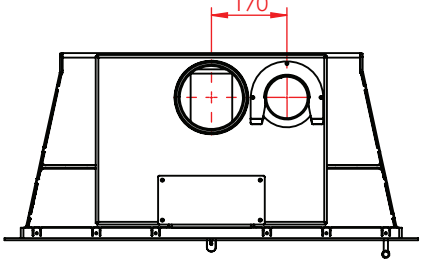
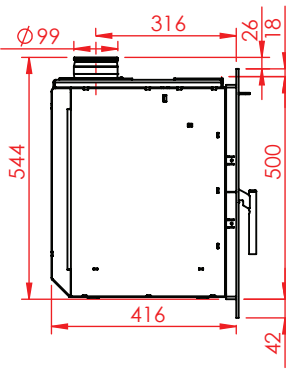
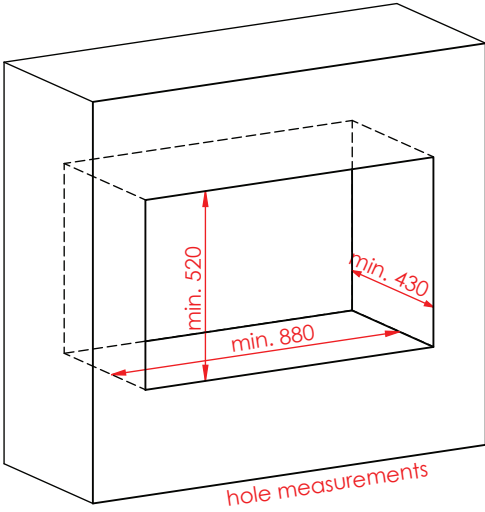
weight: 131 kg



Jupiter 500 - 850



Jupiter 500 - 850, airbox behind

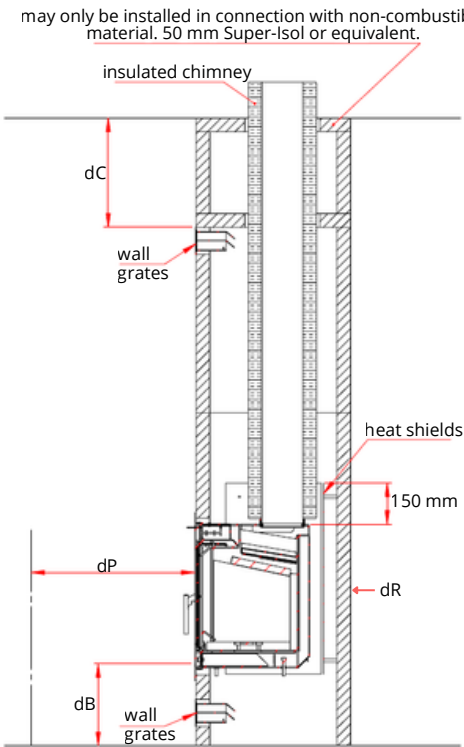
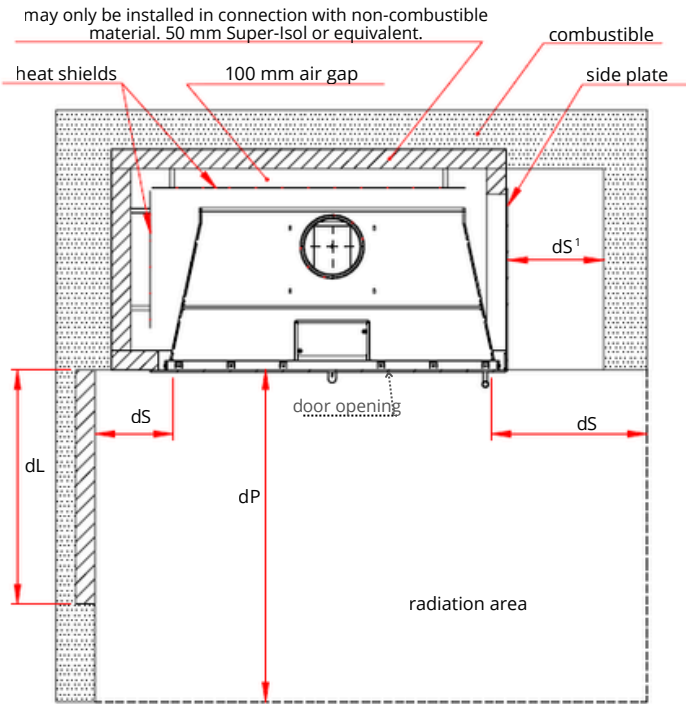
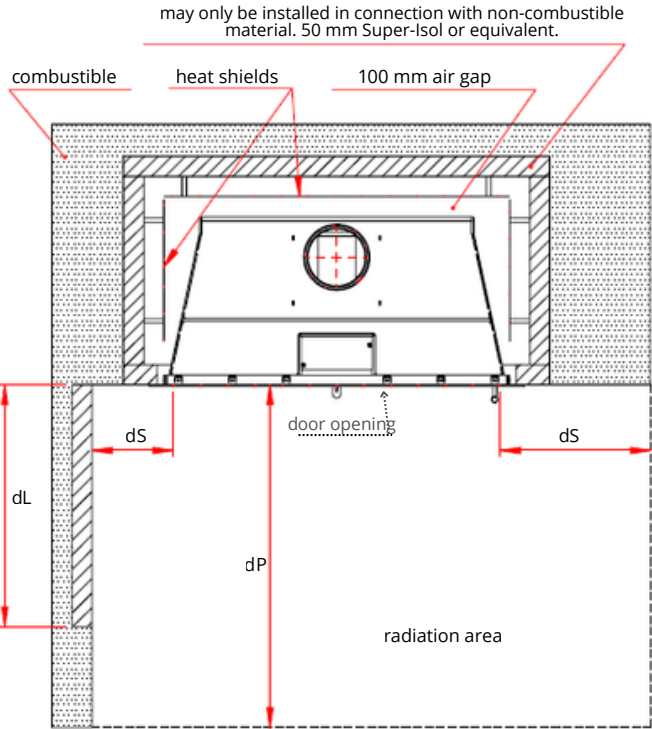


Jupiter 500 - 850, airbox on top

# Clearance to combustibles

Jupiter fireplace inserts  
standard

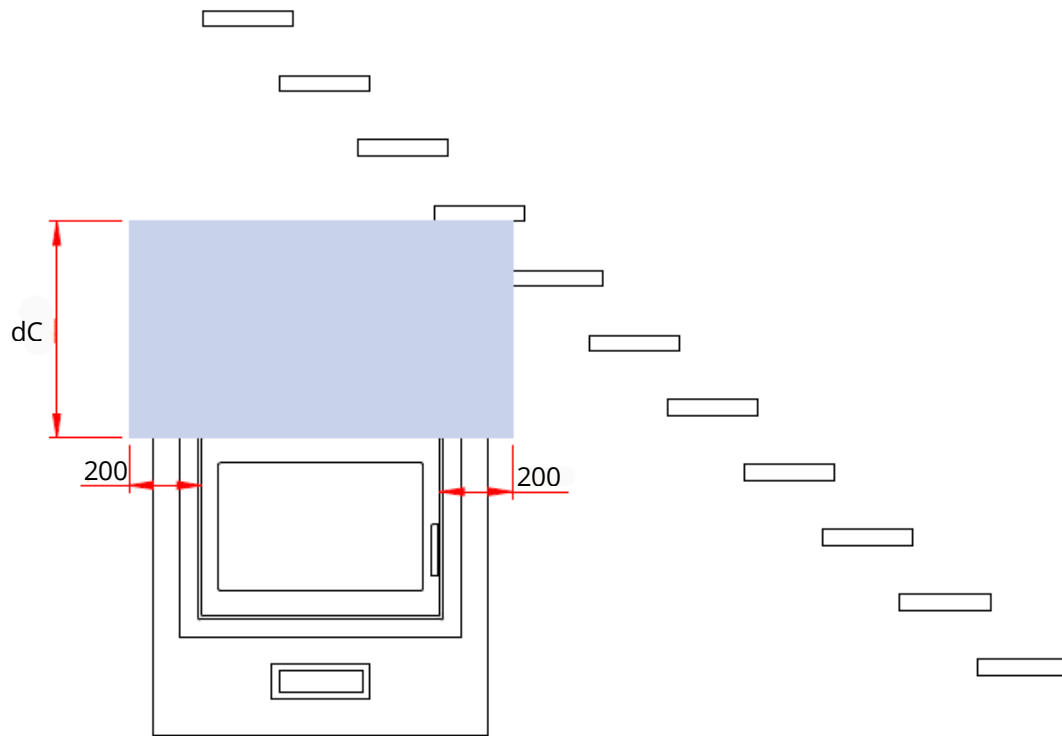
	dS	dS <sup>1</sup> note 1	dB	dP	dL	dC note 3	dR note 4
Jupiter 470-850	400	250	400	1400	700	400	0
Jupiter 500-850	400	250	400	1400	700	400	0
Jupiter 550-850	400	250	400	1400	700	400	0
Jupiter 470 XXL	400	250	400	1400	700	400	0
Jupiter 550 XXL	400	250	400	1400	700	400	0



- Note 1: dimension measured at a closed side plate  
- measured from the edge of the door
- Be aware that the **dS** clearances in front of the insert must still be respected.*
- Note 3: measured from the front edge of the door when **dS** < 400 mm
- Note 4: measured from the top edge of the wall grates
- Heat shields: on all three sides, positioned from the bottom of the stove up to 150 mm above the top of the stove

## Safety distance to staircase/combustible ceiling

If combustible staircases or a combustible ceiling are located above the fireplace insert – measured from the top edge of the door to the nearest combustible part of the staircase: **dC** min. 600 mm



front view example at staircase