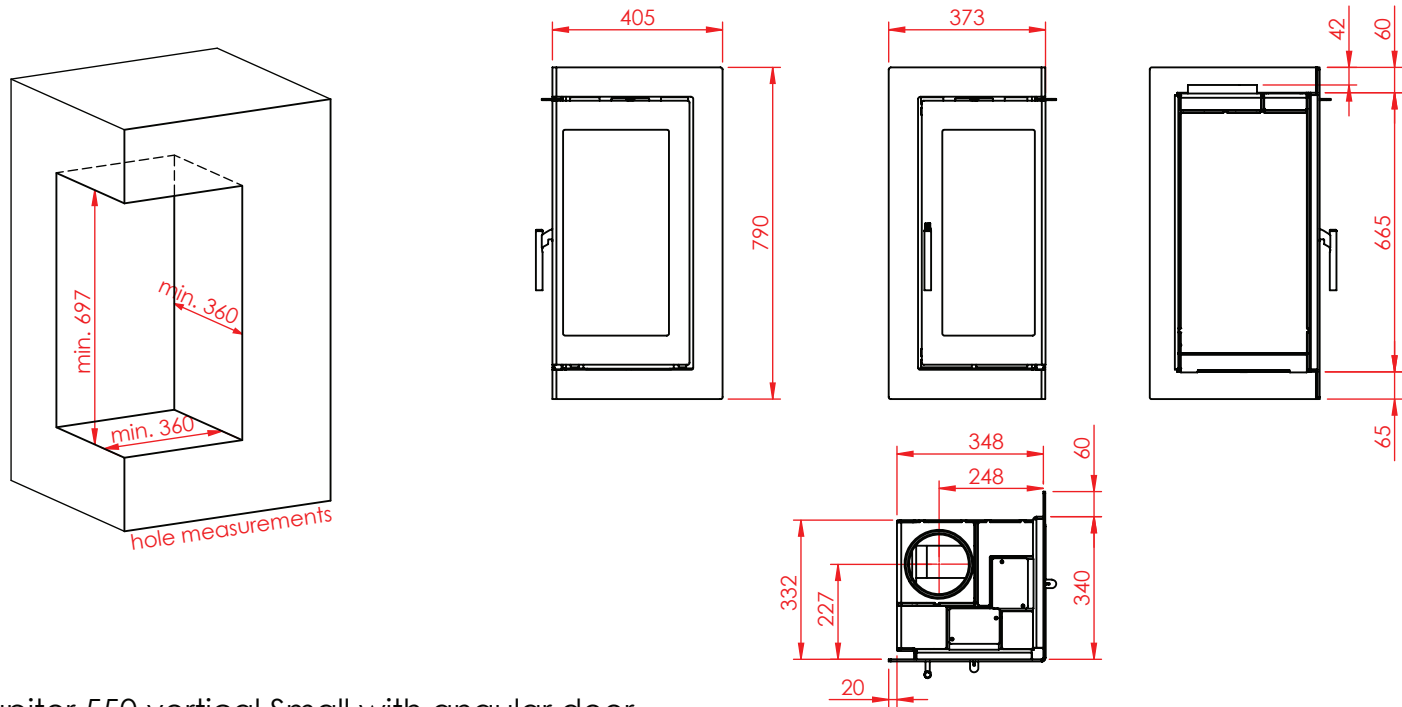
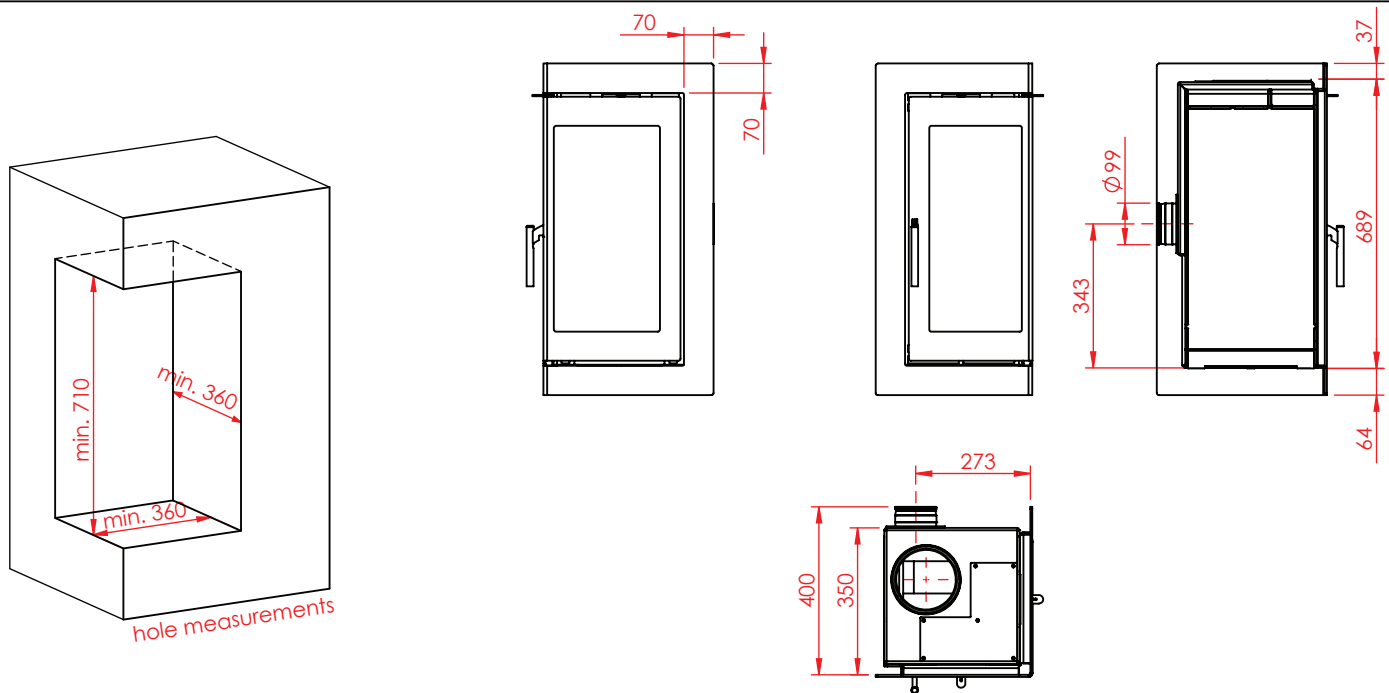


Jupiter 550 vertical Small with angular door

weight: 71 kg



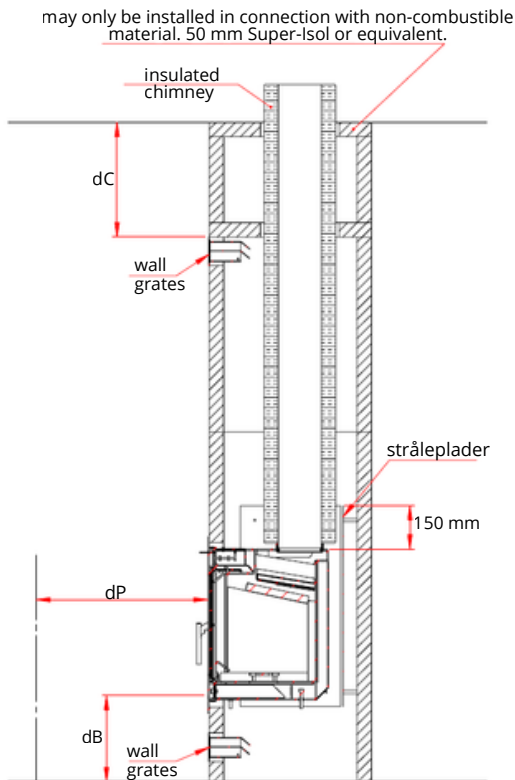
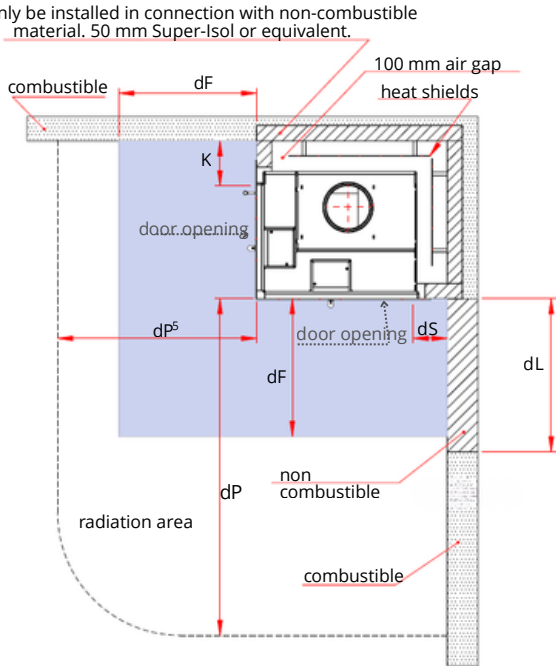
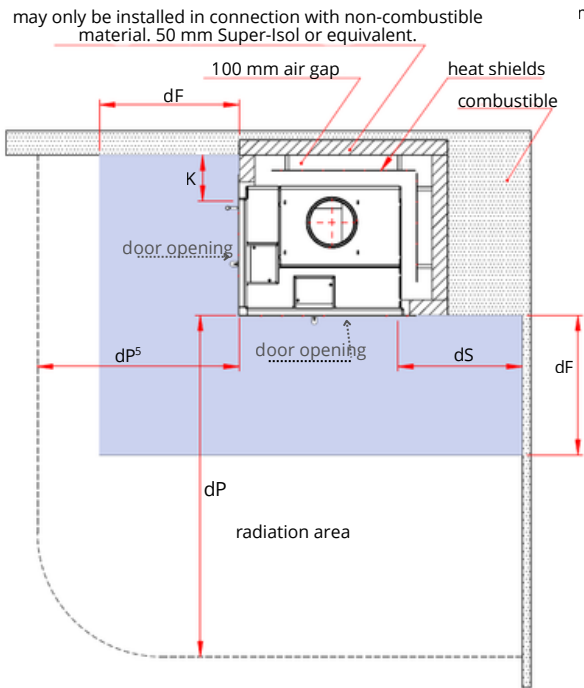
Jupiter 550 vertical Small with angular door



Jupiter 550 vertical Small with angular door, airbox side

Clearance to combustible materials

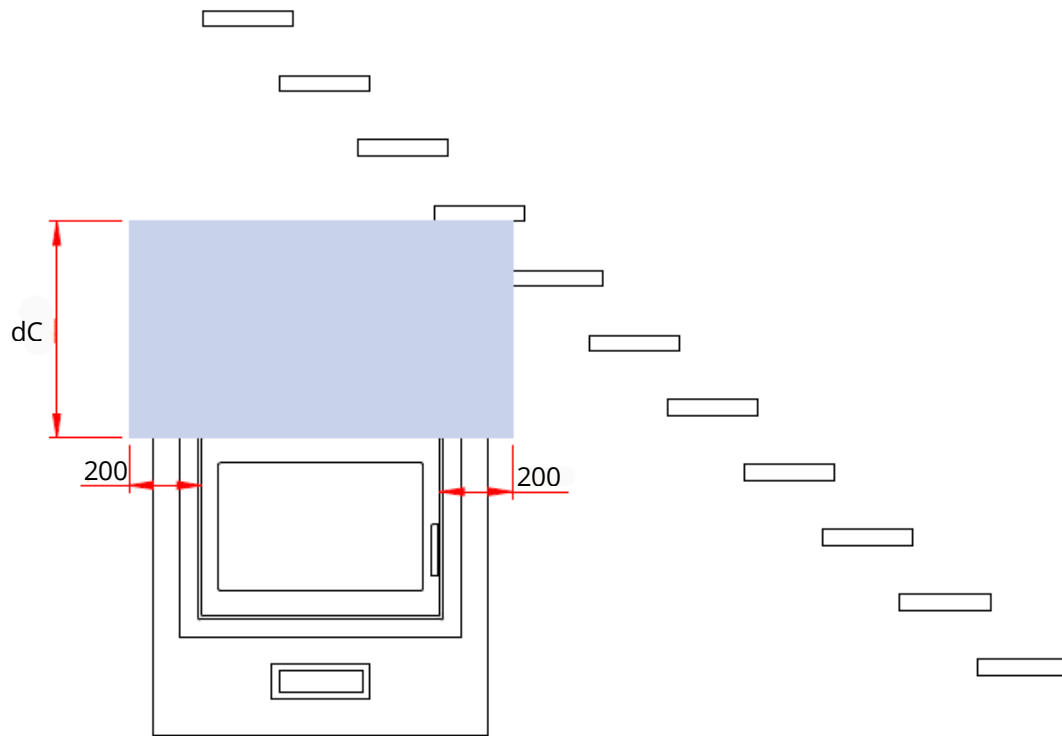
Jupiter fireplace inserts with angular door	dS	dF	dB	dP	dP ⁵	dL	dC	dR	K
		note 2	note 2		note 5	note 3	note 4		note K
Jupiter 470 vertical	400	0/650	300	1100	850	700	400	0	150
Jupiter 550 vertical Small	400	0/650	300	1100	850	700	400	0	150
Jupiter 550 vertical	400	0/650	300	1100	850	700	400	0	150
Jupiter 470	400	0/650	300	1200	850	700	400	0	150
Jupiter 550	400	0/650	300	1200	850	700	400	0	150



- Note 2: safety distance to non-combustible floor
- measured from the floor to the underside of the door edge:
 $dB \geq 300 \text{ mm} = dF: 0 \text{ mm}$
 $dB < 300 \text{ mm} = dF: 650 \text{ mm}$
- Note 3: measured from the front edge of the door when
 $dS < 400 \text{ mm}$
- Note 4: measured from the top edge of the wall grates
- Note 5: side glass furniture clearance
- Note K: measured from the door edge
- Heat shields: on two sides, positioned from the bottom of the stove up to 150 mm above the top of the stove.

Safety distance to staircase/combustible ceiling

If combustible staircases or a combustible ceiling are located above the fireplace insert – measured from the top edge of the door to the nearest combustible part of the staircase: **dC** min. 600 mm



front view example at staircase