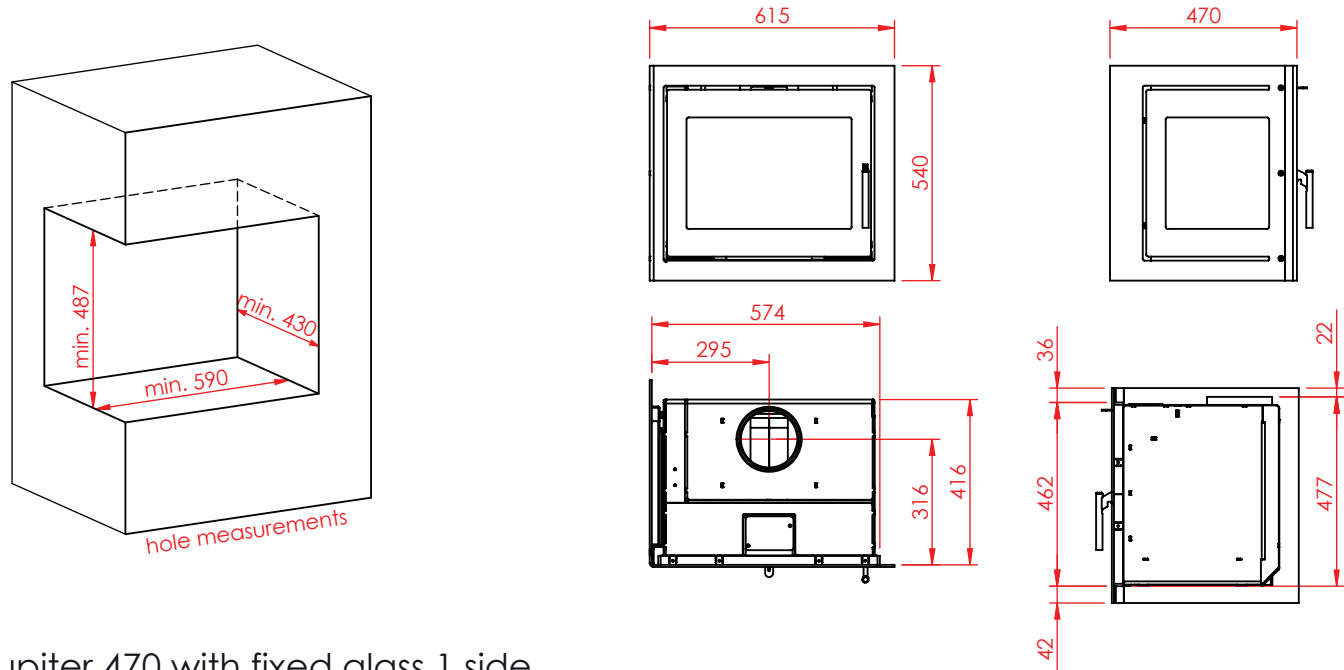
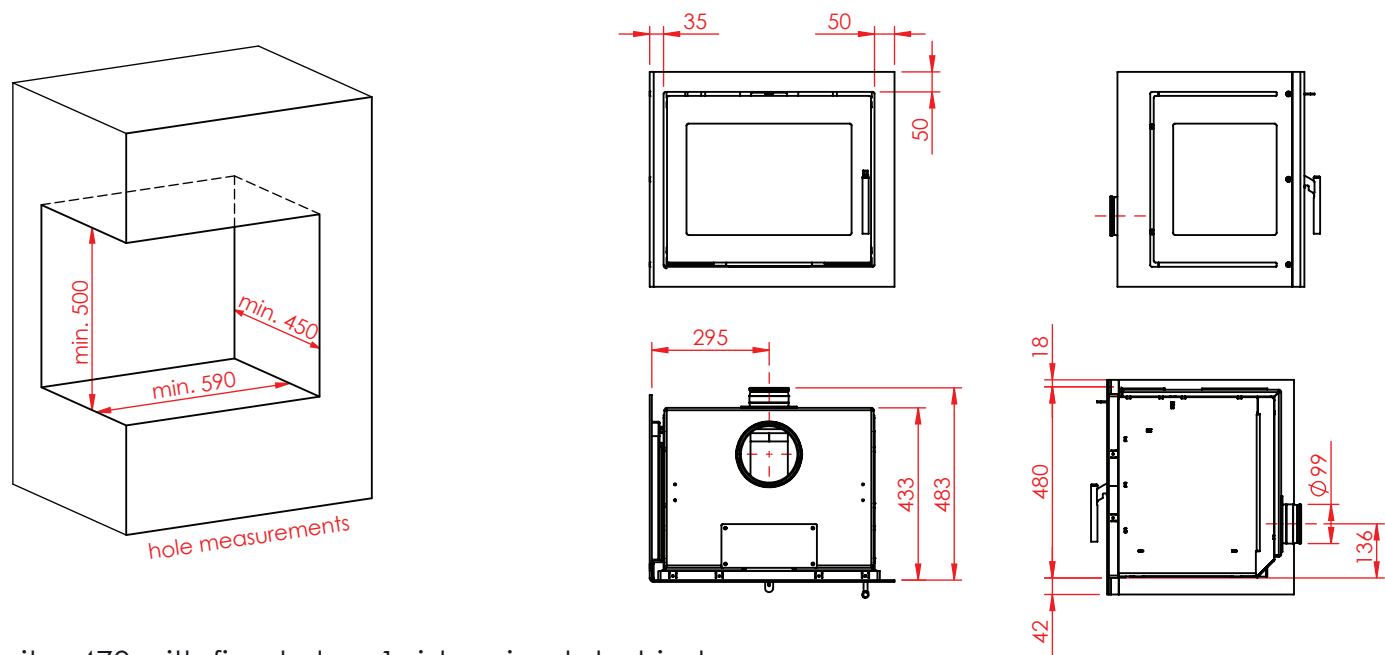


Jupiter 470 with fixed glass 1 side

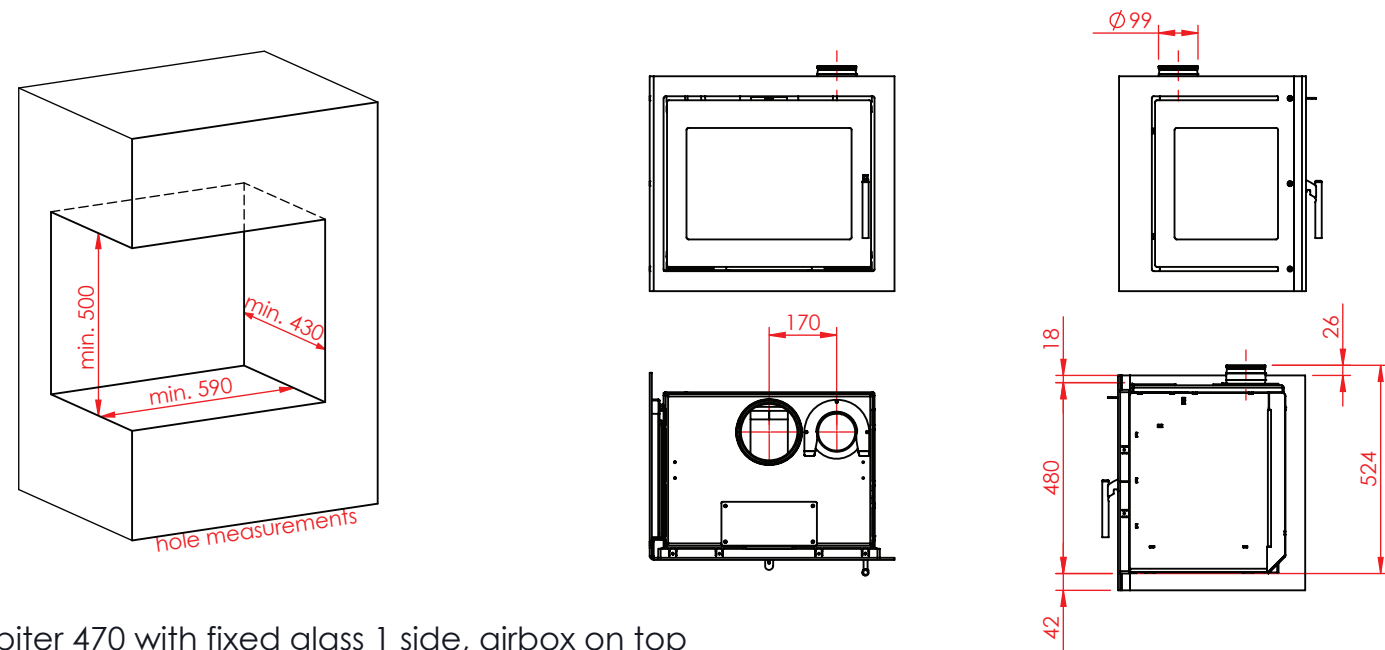
weight: 92 kg



Jupiter 470 with fixed glass 1 side



Jupiter 470 with fixed glass 1 side, aircob behind

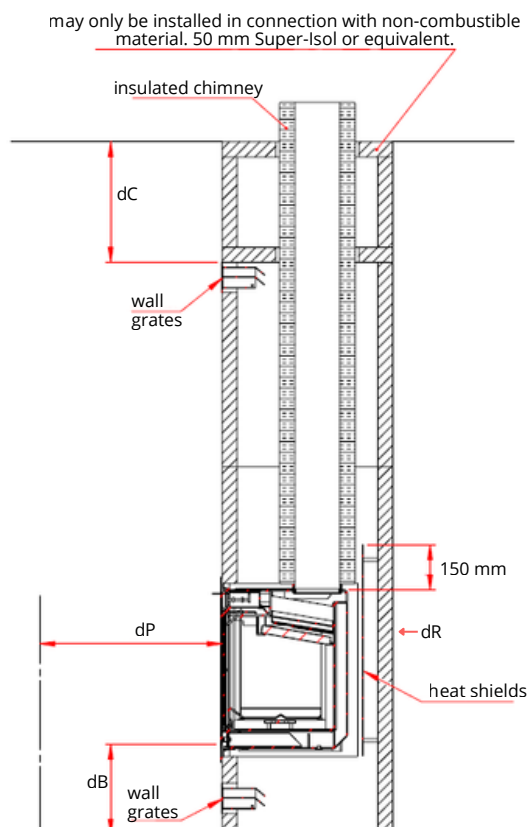
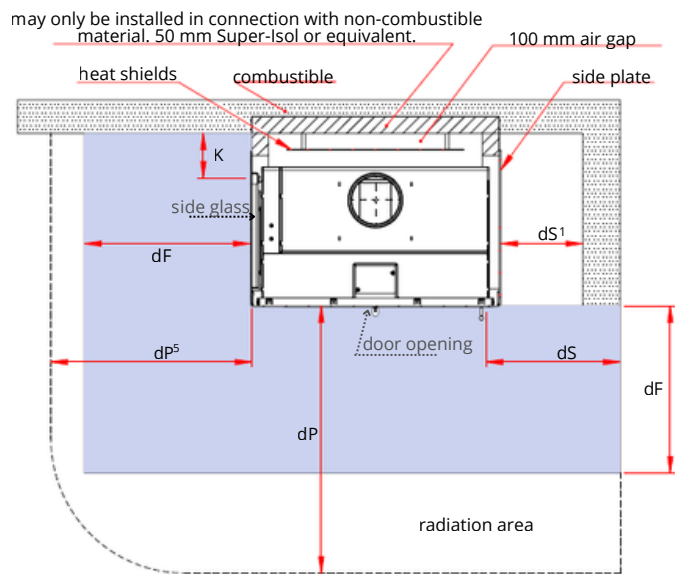
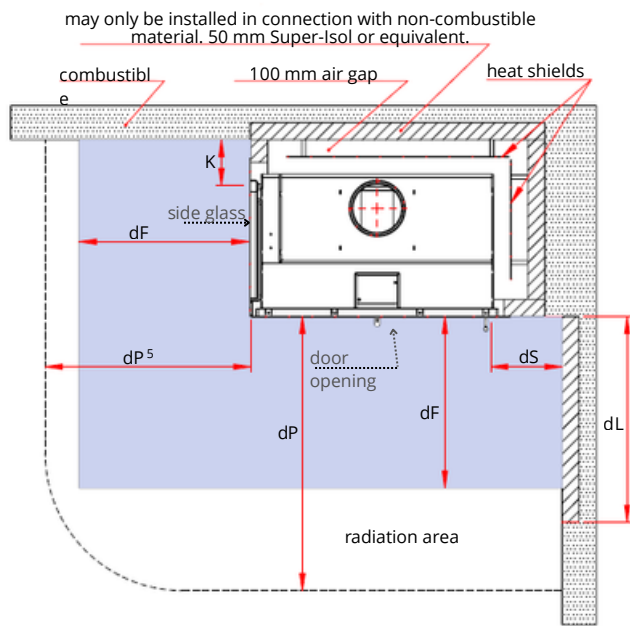


Jupiter 470 with fixed glass 1 side, airbox on top

Clearance to combustible materials

Jupiter fireplace inserts with fixed glass 1 side

	dS	dS ¹	dF	dB	dP	dP ⁵	dL	dC	dR	K
		note 1	note 2	note 2		note 5	note 3	note 4		note K
Jupiter 470 vertical	400	250	0/650	300	1150	850	700	400	0	150
Jupiter 550 vertical	400	250	0/650	300	1150	850	700	400	0	150
Jupiter 470	400	250	0/650	300	1200	850	700	400	0	150
Jupiter 550	400	250	0/650	300	1200	850	700	400	0	150
Jupiter 470 XL	400	250	0/650	300	1300	650	700	400	0	150
Jupiter 550 XL	400	250	0/650	300	1300	650	700	400	0	150



Note 1: dimension measured at a closed side plate
- measured from the edge of the door

*Be aware that the **dS** clearances in front of the insert must still be respected.*

Note 2: safety distance to non-combustible floor
- measured from the floor to the underside of the door edge:

dB ≥ 300 mm = **dF**: 0 mm

dB < 300 mm = **dF**: 650 mm

Note 3: measured from the front edge of the door when
dS < 400 mm

Note 4: measured from the top edge of the wall grates

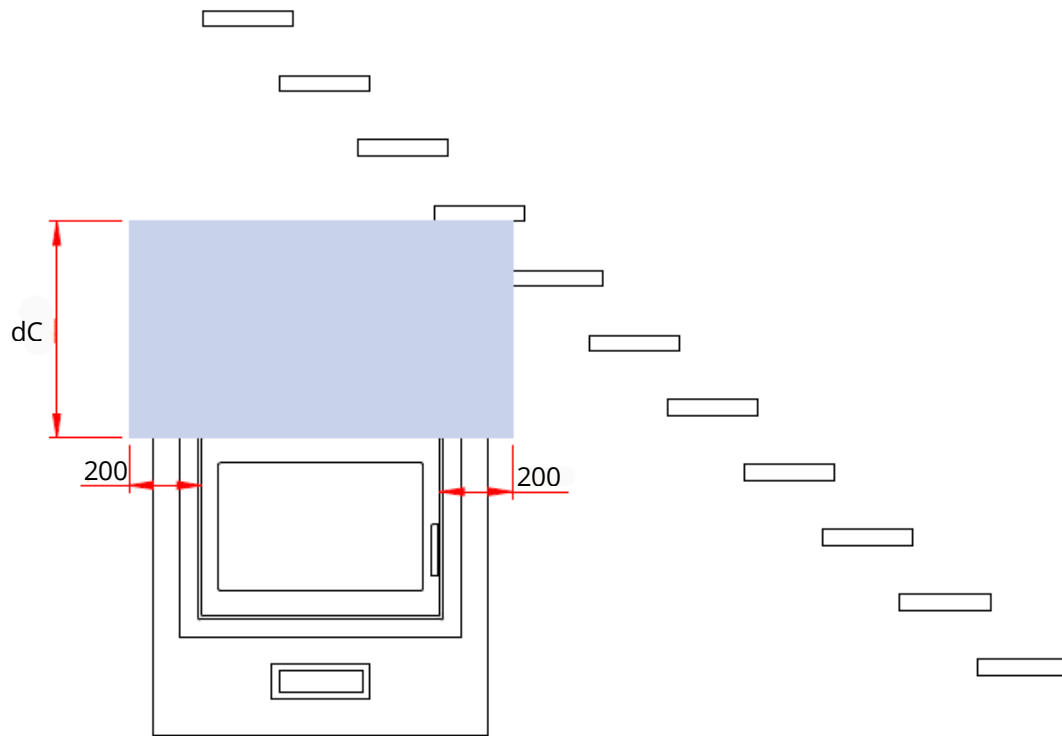
Note 5: side glass furniture clearance

Note K: measured from the groove edge

Heat shields: on two sides, positioned from the bottom of the stove up to 150 mm above the top of the stove.

Safety distance to staircase/combustible ceiling

If combustible staircases or a combustible ceiling are located above the fireplace insert – measured from the top edge of the door to the nearest combustible part of the staircase: **dC** min. 600 mm



front view example at staircase