

# Declaration of Performance (DoP)

## Meteor 550 vertical

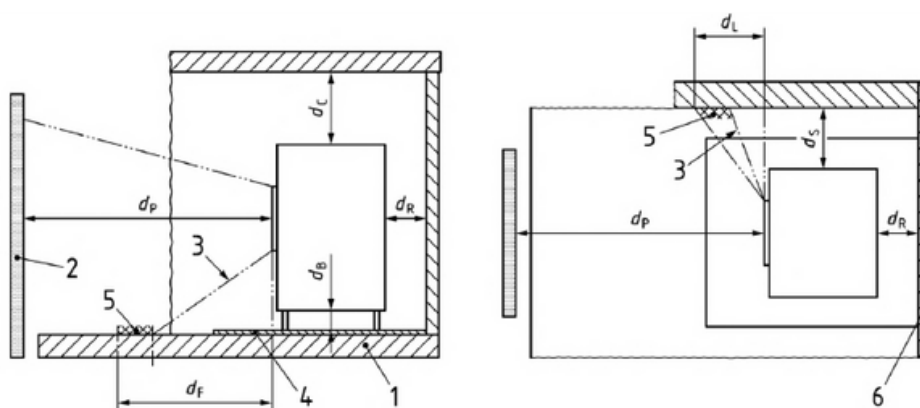
DoP number: DoP-2050/2069-2025-02

- 1. EUnique identification code of the product type** Meteor 550 vertical , freestanding solid fuel stove  
item no. M550HBR
- 2. Intended use:** Room heating appliance for residential buildings
- 3. Manufacturer's name and address:** Meteor A/S, Drejervej 1, DK-7451 Sunds,  
Tlf.: +45 97 14 13 33, E-mail: mail@meteor.dk
- 4. Authorised representative:** -
- 5. System of assessment and verification of constancy of performance:** System 3
- 6. Notified body / test reference:** DTI - Danish Technological Institute (NB1235)  
AoP1235-CPR-ELAB-2050&2069 Rev 1
- 7. Harmonised standard:** EN 16510-1:2022 / EN 16510-2-1:2022

### 8. Declared performance

Characteristic	Declared performance	
<i>Efficiency (nominal operation):</i>	room heating	9 kW
	water	n/A
	efficiency	78 %
<i>Seasonal efficiency:</i>		68 %
<i>Energy Efficiency Index (EEI):</i>		103
	class	A
<i>Emissions (nominal operation):</i>	CO (13 % O <sub>2</sub> )	≤ 1500 mg/m <sup>3</sup>
	NOX	≤ 200 mg/m <sup>3</sup>
	OGC	≤ 120 mg/m <sup>3</sup>
	PM	≤ 40 mg/m <sup>3</sup>
<i>Draft data (nominal operation):</i>	flue gas temperature:	319°C
	recommended chimney draught:	12 Pa
	flue gas mass flow:	g/s

Characteristic		Declared performance
<i>Mechanical strength:</i>	load-bearing capacity	50 kg
<i>Distance to combustible materials:</i>	bottom edge of door (dB)	NPD
	floor in front (dF)	0 mm
	ceiling (dC)	750 mm
	side (dS)	250 mm
	side within radiation area (3)	400 mm
	furniture (dP)	1200 mm
	rear (dR)	100 mm



1: floor/base 2: furniture 3: radiation area 4: floor protector 5: combustible material 6: rear wall

## 9. Declaration of conformity:

The product complies with the declared performance.

This declaration is issued under the sole responsibility of the manufacturer in accordance with Regulation (EU) No. 305/2011

Signed for and on behalf of the manufacturer by:

Sunds 1 / 11 2025

Rene Povlsen, Director

\_\_\_\_\_  
underskrift