

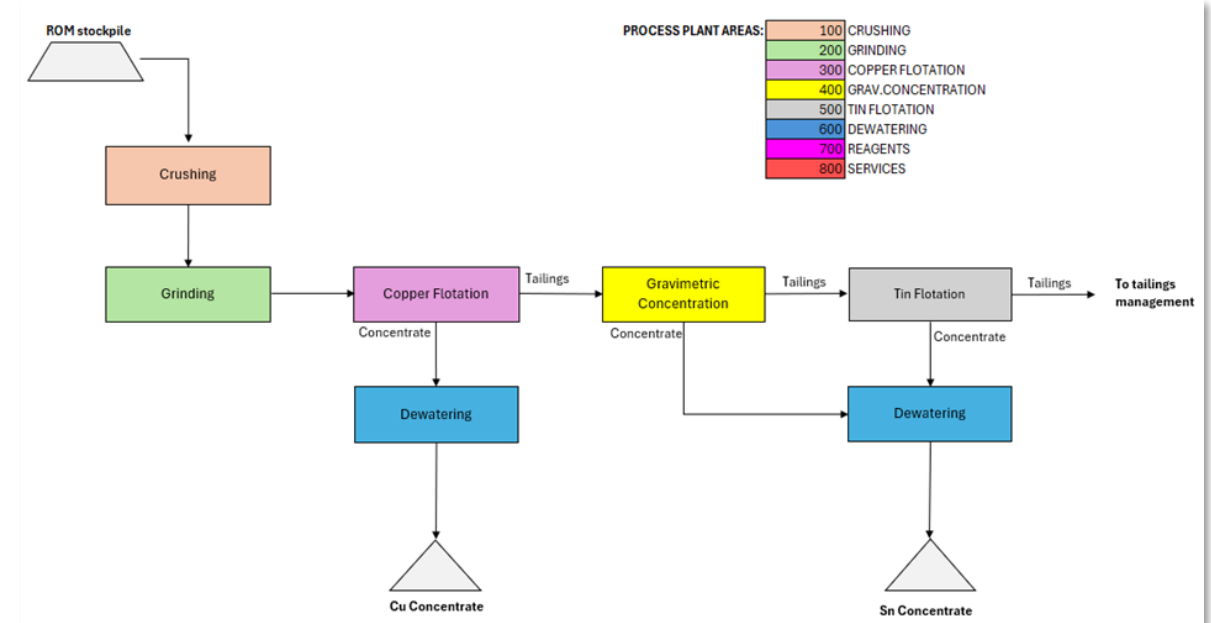
LA ROMANA METALLURGICAL STUDY SUMMARY

29
Cu
Copper
63.55

50
Sn
Tin
118.71

47
Ag
Silver
107.87

- **Copper concentrate containing 26% to 32% Cu and 102 ppm Ag with an expected recovery of over 88%**
- **Tin concentrate containing 63% Sn with an expected recovery of over 60%**
- Ore classified as medium-hard to crush and grind
- Low grinding energy requirements due to coarse liberation sizes (chalcopyrite liberated at 106µm and cassiterite liberated at 53µm)
- Simple process design combining conventional froth flotation to recover copper and silver, followed by standard gravimetric concentration to recover tin
- Low concentrations of deleterious elements
- Payable silver levels indicate a potential credit in the copper concentrate



Final outcomes:

- Expected commercial specifications of Cu & Sn concentrates
- Basic process flowsheet & engineering, including mass and water balances, and tailings disposal
- Opex & Capex estimation at PFS level (NI 43-101-compliant)