

# ALCHEMICAL PRINCIPLES

---

And their application to Inner Alchemy

# Formulae and treatise that contain the origins of the **ALCHEMICAL PRINCIPLES:**

- ❖ Hermetic Principles
- ❖ The Discipline of Vibration
- ❖ The Emerald Tablet

Connecting the Ancient Wisdom and Symbolism to the practical and Conscious application of the Alchemical principles and universal laws of energy in our lives.



# Hermetic Principles

## As Above So Below



### 1. Principle of Mentalism

All is Thought (Mind).

### 2. Principle of Correspondence

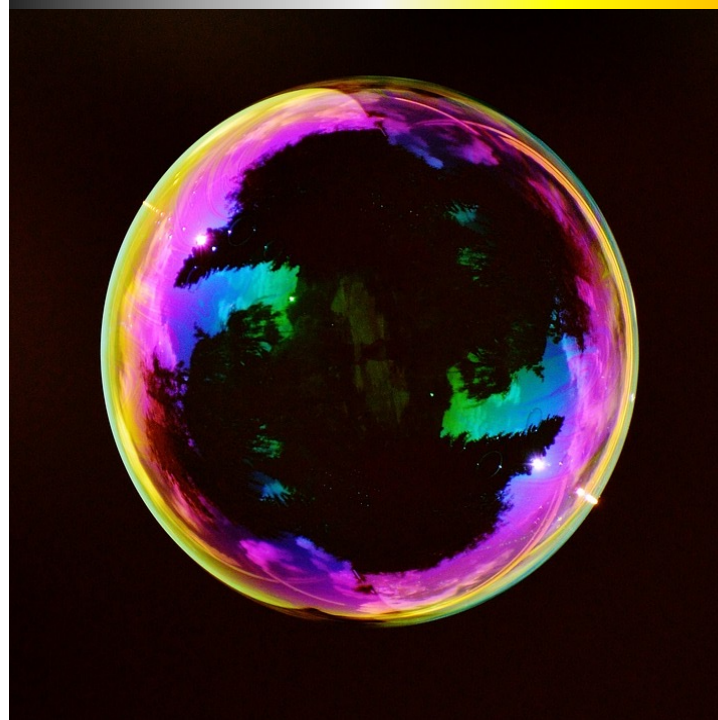
It is necessary to vibrate (at the level of desire) at the same frequency as what you desire to attract or manifest.

### 3. Principle of Vibration

Everything is in motion.

### 4. Principle of Polarity (or the Law of Choice)

Everything can be corrected as long as the polarity is changed.



### 5. Principle of Rhythm

The original thought acquires a life of its own and seeks to improve or express itself fully.

### 6. Principle of Cause and Effect

Changing the cause implies that the effect changes, but only by creating a new cause.

### 7. Principle of Generation (or Gender)

Refers to the process of birth. Thought is the Male Principle. Feeling or desire is the Feminine Principle.

# The Discipline of Vibration

**1** Everything is in constant movement and vibration.

**2** Vibration is intelligent instinct.

**3** Everything is matching.

**4** Every manifestation is an act/result of belief.

**5** What matches is perfect.

**6** Manifestation believes.

**7** Belief manifests always.

**8** Vibration attracts.

**9** Attraction vibrates.

**10** Vibration attracts more belief.

**11** More belief attracts more manifestation.

**12** More manifestation attracts matching vibrations.

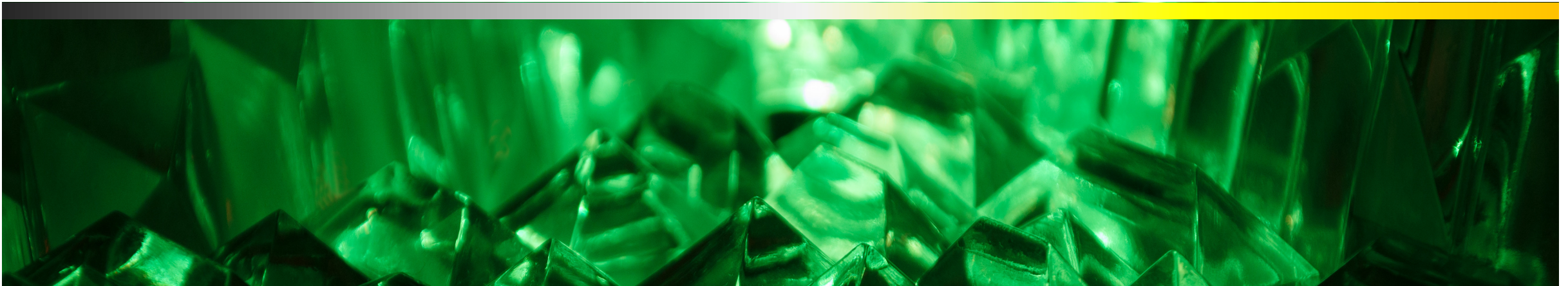


# The **EMERALD TABLE:** Mother of all keys

It dates from around 36,000 BC.

It reveals the wide **potential of alchemy** in depth, addressing the human being as Creator, and Creation, as the beginning and end of all things.

Rather than **understood**, it is **Known** through affinity with the Soul.



## Emerald Tablet's **main precepts applied to Inner Alchemy:**

- ❖ All is a reflection of the **Absolute**. The end (death) returns us to the beginning (birth), demonstrating that all is One.
- ❖ **Being** is the vehicle of the One.
- ❖ Parting from the unity represented by the Sun (the Masculine Principle) and the Moon (the Feminine Principle of absorption, transmutation and reflection), thought-forms are born.
- ❖ The father refers to **Source** or beginning.
- ❖ **Stability** comes from the **Earth**. The incarnational process strengthens and stabilizes spirit, linking both worlds.
- ❖ We're dealing now with **sublimation**, the raising of a vibratory frequency to its highest state. For this, we must accelerate our own frequency dimensionally. Full mind refers to Higher Mind, that which is governed by **Heart Intelligence**, the only tool capable of embracing both concept and detail, and the only one capable of decoding and interpreting experience into earthly language.

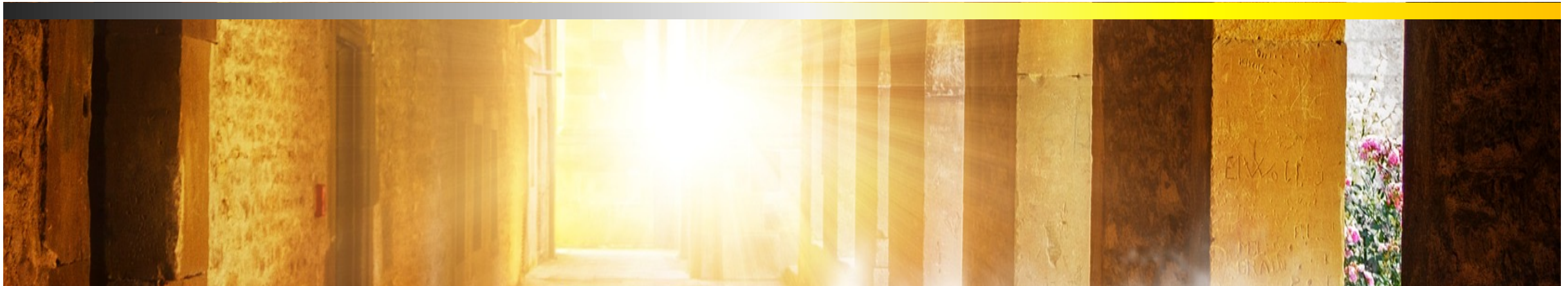
## Emerald Tablet's **main precepts applied to Inner Alchemy:**

- ❖ We are shown the route for connecting with **Source** (Presence) through an **Alchemical Alignment** that establishes the operational circuit for any **transformation**.
- ❖ **The force of Mind** (Higher Mind) links the frequency of both planes: abstraction and detail.
- ❖ Through our use of thought-forms to **construct reality**, we create our world, reproducing and echoing the process of the beginning.
- ❖ The **perfect Human Being** is the masterpiece of the Absolute.
- ❖ The Sun, in this case **the One**, is not just the purpose but is also the end: **Returning to the Source**.
- ❖ **Power** resides in **the One** and not by any sum or parts. It exists beyond duality. What **IS** will be.



To be happy, free, whole, beautiful, abundant and prosperous, we must remember-feel that **we Are**, and assume the faculties and powers within the **State of Presence**. The subject **Is** its own work and the end that he or she seeks, because effects correspond to the vibrations that are generated automatically or in **Consciousness**.

Such is our **Daily Alchemy** in the tone and colouring that we lend it.



# Our Daily **Alchemy**

---

**Consciousness** and **matter** are the two elements necessary for every creation and manifestation.

**Alchemy** is the result of their interaction.

When **Spirit-Soul** takes over the personality, the practice of Alchemy may be sustained without distortion, through the force applied by the Higher Mind.

As conscious intelligence in matter, the **Alchemist** is the **transmuting vehicle**.





# Our Daily **Alchemy** - Becoming a **Conscious Alchemist**

## AUTOMATIC / ORDINARY

- ❖ We practice a kind of alchemy in our daily life, directing visual, mental, and emotional faculties towards **manifestation**.
- ❖ Imagination conceives and orients thought-forms, **imprinting** moulds that await material expression.
- ❖ We identify with people and situations in real life: **equals attract one another**. This refers to vibratory frequency and not to appearance.

## CONSCIOUS

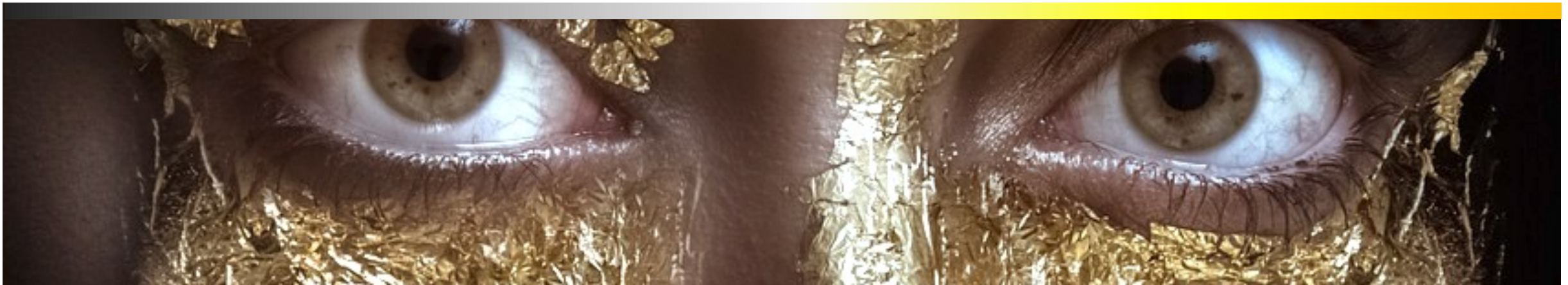
- ❖ To **visualize** is to photograph or to impress a structure upon the ethers.
- ❖ To **feel** is to impose a vibratory rhythm upon our surroundings.
- ❖ To **think** is to direct or to determine form.
- ❖ A thought without emotion is something dry, a mere formula. Emotions qualify thoughts and lend them **movement**.
- ❖ As we become aware of the live frequency of a **thought-form** and we can distinguish the mental from the emotional charge, we could redeem the prime force behind it.
- ❖ **Awareness** and **Willpower** accelerate and refine force until it is transformed into something constructive.

# Our Daily **Alchemy** - Becoming a **Conscious Alchemist**

The difference between a real **Alchemist** and the automatism of a wilful human being is the **degree of consciousness, discipline, intention** and **tolerance** of their various **energetic fields** and **faculties**.

The level of Consciousness is what determines the ultimate quality of a creation.

**Transmutation**, as well as **sublimation**, begins by the work that the individuals perform on themselves.





The ultimate alchemical process, also known as the  
ALCHEMICAL MARRIAGE (Magnum Opus),  
is the interaction between  
**Consciousness** and **physical matter**,  
within the **Alchemist**.

**YOU MANIFEST WHAT YOU ARE**

