



MALE | FEMALE

Ego and Behaviour



Zulma Reyo
School of Consciousness

MALE EGOISM

Men if not by physical force, tend to dominate the world through the mind, logical reasoning, principles and treatises.

However, their dependence upon women for emotional nourishment and intuition as heart force, makes them especially vulnerable.

Men know how to use their mind, translating emotions into concepts. This can turn them into cold, calculatingly cerebral, distant and unreal persons.

Men will instinctively attack a woman's emotions and belittle her, or else they raise her onto an unreal pedestal (from where she will undoubtedly fall) in order to conquer her. They use their mind, even inadvertently, to exploit women and everything around them.



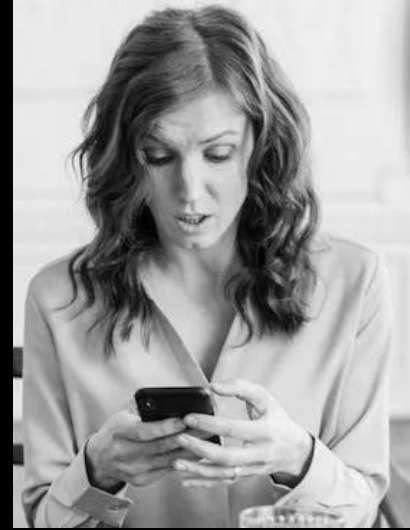
FEMALE EGOISM

As a woman's physical pole is negative. Naturally, all her physical expressions are motivated by emotional needs.

A woman's ego shows up in emotionally tinged language. She identifies herself with what she sees, leading to possessive expressions such as, "my son", "my husband".

If she does not refine her emotional attachment, she becomes egocentric and demanding, attacking the instinctual nature of man and belittling, condemning his physicality in an attempt to control him.

Unless a woman reaches the level of the heart, the evolution of humanity remains mediocre. Much depends on her.



SOCIAL DYNAMICS IN THE WORLD TODAY



Misuse of **FIRST** Centre:

Man: The positive polarity expresses urgency and violence, excessive emphasis on sensation and selfish gratification, and the use of people and natural resources for exploitation.

Woman: The negative polarity manifests a lack of grounding, a negation of body consciousness, fear, insecurity, lack of personal resources, poverty and old age.

Misuse of **SECOND** Centre:

Man: The negative polarity manifests a lack of feeling, dry, brittle superficiality, lack of warmth and emotional responsiveness.

Woman: The positive polarity expresses emotional manipulation and irrationality, seduction and attachment, possessiveness and guilt, and all forms of emotional excesses.

SOCIAL DYNAMICS IN THE WORLD TODAY



Misuse of **THIRD** Centre:

Man: The positive polarity expresses ambition and obsession with power, exploitation and manipulateness.

Woman: The negative polarity manifests dependency upon outer authority and discipline as well as an avoidance of it, no true knowledge of self or ability to control the self. Rampant fear of power and a masochistic attraction to being dominated.

Misuse of **FOURTH** Centre:

With such poor backing, the heart centre generally manifests opinionated intelligence on the one hand (**MAN**) and airy-fairy woolly thinking on the other (**WOMAN**).

SOCIAL DYNAMICS IN THE WORLD TODAY

KEY MESSAGES

The **positive male** polarities of the **FIRST** and **THIRD** centres express the destructive materialistic characteristics of the centres.

The **positive female** **SECOND** centre magnifies the destructive indulgencies of emotional excess.

In order to correct this, individual consciousness of both men and women must shift from self-preoccupation to awareness, from ego to **a conscious flexible personality**.





SPIRITUAL PATH

SPIRITUAL PATH FOR MEN

The Male Journey in Consciousness is from the active **BASIC** centre through the action impulse at the **SOLAR PLEXUS**, to the word (written or spoken) and finally to leadership.

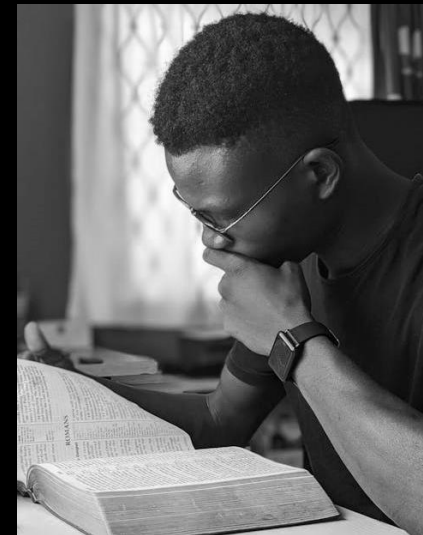
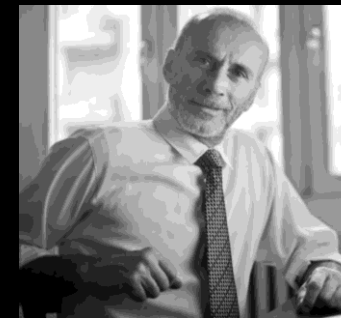
The critical (deepening) stages for him are the negative modalities, especially that of the **HEART**. He would need the support of grounded, neutral female energy to hold him and generate enough momentum for him to proceed. He usually finds this in mothers, partners, friends or activities of some sort.

An alternate path for him is always **withdrawal from the world**. Something not appropriate for women.



MALE IN CONSCIOUSNESS - Character Traits

- Leadership
- Sincerity
- Intellectual keenness
- Nobility
- Creativity
- Magnanimity
- A sense of real justice
- Integrity
- Impeccability



SPIRITUAL PATH FOR WOMEN



The Feminine Dynamic goes through sentience all the way, from her **emotions** to her **HEART** and **VISION**, stepping aside from herself to become channels or passages of cosmic and planetary force.

An enlightened woman may choose to express herself in any which way but there will always be the flavour of group consciousness and sentient humanity revealed.

Woman is the **bridge** between worlds. It is important that she cultivates **receptivity** from the Heavens and the Earth.

FEMALE IN CONSCIOUSNESS - Character Traits

- Kindness
- Forgiveness
- Patience
- Generosity
- Wisdom
- Emotional control
- Economy
- Practicality
- Simplicity



Woman's is the path from the emotions to the intuition of the heart, which is where her mind flourishes, bypassing the dangers of the concrete mind to find the Great Mother who is always within.
The High Priestess.



Man's path is perhaps the most difficult, but it is also the most glorious. He must distinguish the authority bequeathed to him by virtue of his gender from rampant authoritarianism. He must assume his identity as the true Patriarch of Humanity until, at last, he, as the son, becomes one with the Father at the Source.