

**PARTNER WITH OWKIN**

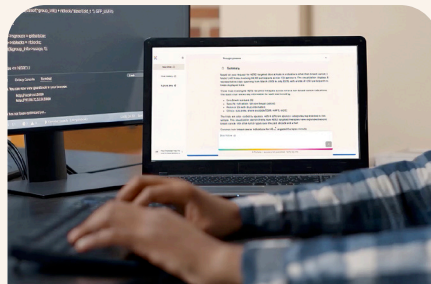
# Bring the future of AI-driven R&D to Pharma

Partner with Owkin to deliver cutting-edge AI solutions to your pharma clients powered by K Pro, Owkin's AI Scientist.



### The shift is happening now

Pharma companies are seeking cutting edge platforms to accelerate drug discovery and development.



### The gap

Most firms lack a deep, domain-specific AI solution tailored for biomedical R&D.



### The opportunity

Partner with Owkin to unlock high-value agentic decision making across drug discovery, translational research, and clinical development for your clients.

**NEW ALLIANCES INITIATIVE**

## Bring K Pro directly into your pharma engagements

We partner with leading consulting firms to embed Owkin's AI capabilities into their existing client work.

You introduce Owkin to your Pharma clients

We provide the AI platform, data, and scientific expertise

Together we unlock new, high-value R&D opportunities


**THE RESULT**

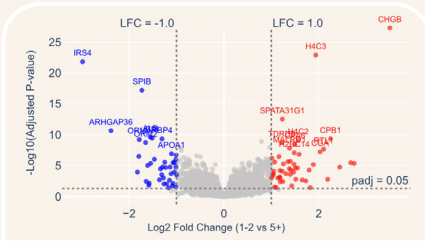
### Driving pipeline value for your clients with K Pro

Enhance your R&D offering with best-in-class AI and data capabilities, enabling you to deliver differentiated, market-leading solutions at scale. Position your firm as a leading provider of state-of-the-art solutions.



# Built to accelerate every step of the drug discovery & development pipeline

Ask questions in natural language to solve challenges from target discovery to portfolio strategy.



## Prioritize targets

Rank therapeutic targets and gene candidates using statistical evidence from TCGA and MOSAIC datasets.

## Second-Tier Targets (Good Tractability + Moderate Safety)

### 3. CLDN3 (Rank #3)

- **Antibody Tractability:** Good - transmembrane protein according to [UniProt](#)
- **Expression Profile:** Moderate tumor selectivity with some liver expression (z-score: 1.0) according to [Human Protein Atlas \(HPA\)](#)
- **Safety Risk:** Moderate - medium liver expression requires monitoring
- **Development Status:** Established target with known therapeutic approaches

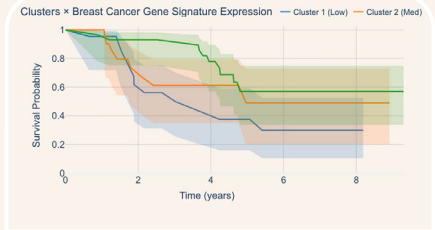
### 4. CLDN4 (Rank #4)

- **Antibody Tractability:** Good - transmembrane protein according to [UniProt](#)
- **Expression Profile:** High kidney expression (z-score: 1.0) but tumor-associated according to [Human Protein Atlas \(HPA\)](#)
- **Safety Risk:** Moderate-High - kidney expression concerns
- **Development Status:** Active research target

Underexplored but Promising Targets

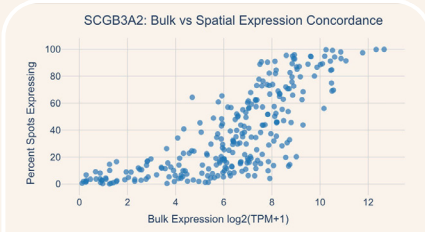
## Assess druggability

Evaluate target tractability, safety profiles, and therapeutic potential using curated databases.



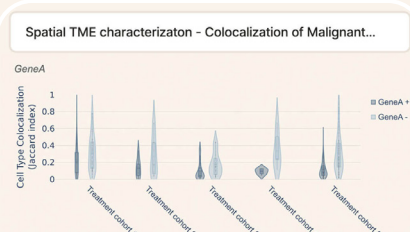
## Characterize patient subgroups

Identify distinct populations based on multi-omics profiles and clinical outcomes.



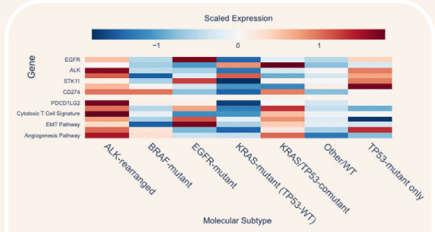
## Validate biomarkers across modalities

Test biomarkers and hypotheses across bulk RNA-seq, single-cell, spatial, and clinical data.



## Generate comprehensive reports

Publication-ready reports for gene/target assessment, biomarker prioritization, and patent landscape analysis.



## Connect biology to clinical outcomes

Integrate genomic, transcriptomic, and immune data to identify therapeutic opportunities and predict treatment response.

# Let's work together to deliver value

### CO-DELIVERY

Owkin deploys K Pro alongside consultants on pharma clients.

### PREFERRED RESELLER

Firm recommends K Pro in pharma RFPs and earns referral margin.



## Book a demo

Discover how K Pro can transform your clients' drug discovery and development.

Scan the QR to book a demo with our team and explore partnership opportunities.

Get in touch with us at [owkin.com/contact](https://owkin.com/contact)

© 2026 Owkin, Inc | Public information | Ref. 059V4

