

Use this as your glossary

Adipose Fin

Fleshy, ray-less fin on the midline of the back of fish, between the dorsal and caudal (tail) fins. Found almost exclusively on the Salmonid family of fishes.

Anal Fin

The unpaired fin on the underside of the fish, behind the vent.

Barbel

An elongated, hair-like projection, usually about the mouth, chin, or nose, as in cods and sturgeons.

Dorsal Fin

Unpaired fin atop the back of the fish.

False Parr

Resemble parr marks but are not positioned or shaped correctly. They can be uneven, faded or round and may not touch the lateral line.

Forked Tail

The tail fin (caudal fin) split deeply into two lobes, forming a V-shape.

Parr Marks

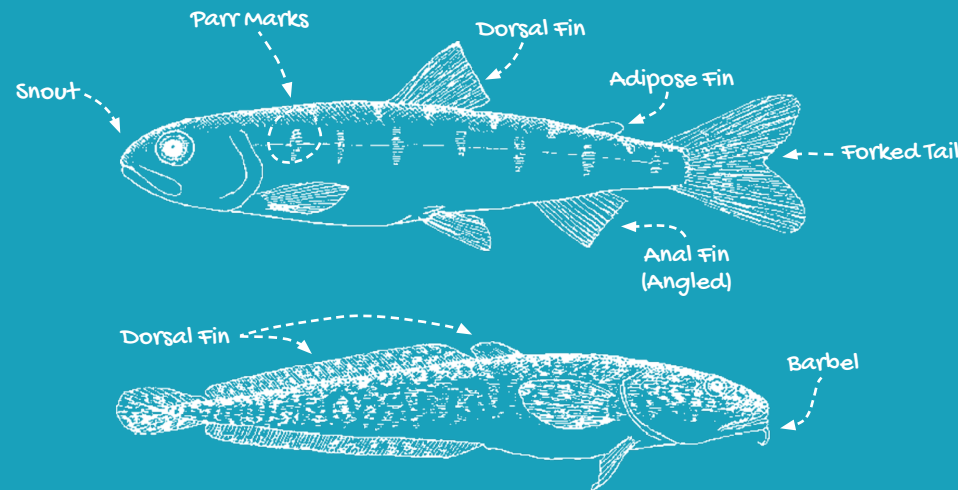
Dark vertical marks on sides of young salmonid fishes that provide camouflage from predation.

Origin (of Fin)

The anterior end of a fin's base.

Snout

Part of the head of a fish in front of the eyes.



Illustrations by Cynthia Hunt

Understanding Yukon's Juvenile Freshwater Fish

Accurate identification of juvenile fish is essential for effective research and conservation efforts. This key is intended to assist with identifying juvenile fish species under 120mm found in the Yukon Territory.

Before conducting any fish sampling, ensure that all necessary permits and permissions have been obtained. When handling fish, do so with care and respect—release them as soon as possible. If fish must be temporarily held, minimize handling time, provide adequate cover, and ensure proper aeration or perform frequent water changes. Return fish to their original capture location.

We extend our sincere thanks to Jake Duncan and Erin Waterman for their report, "Juvenile Fish Identification CRE-62-03." With Jake Duncan's permission, we have adapted and redesigned this identification guide from the report.

The Yukon First Nation Salmon Stewardship Alliance is supported by the Council of Yukon First Nations and is composed of Yukon First Nation government representatives and core staff. Our information is determined by a blend of Western science and Traditional Knowledge.



Photo Credit to E. MacDonald



www.yfnssa.ca

www.cyfn.ca

Juvenile Fish Identification Key

YUKON WATERS

Start Here

