

BITZEE AQUARIUM

30 BITZEE FISH

COMMON

RARE

LEGENDARY

BABY
↓
ADULT



BABY
↓
ADULT



BABY
↓
ADULT



BABY

ADULT



BABY

ADULT



BABY

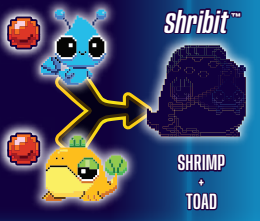
ADULT



Brite Blob™



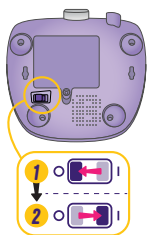
Shribit™



1

GET STARTED

BEFORE PLAY
Turn toy off and on again.



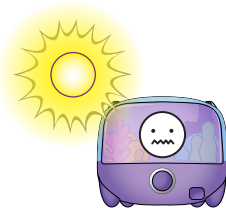
DO NOT ADD WATER OR PUT OBJECTS INSIDE.



DO NOT TOUCH SCREEN.



WORKS BEST AWAY FROM BRIGHT LIGHT.



2

LEARN TO PLAY

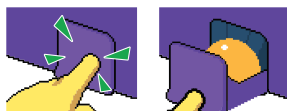
Learn to play with your Bitzee™ by following the tutorials on screen.



DIP FINGER



KNOCK



OPEN DRAWER AND REMOVE PELLETT



DROP IN PELLETT



TURN DIAL



PRESS DIAL



COMPETE EACH TUTORIAL TO CONTINUE PLAYING!

LOST YOUR PELLETS? NO PROBLEM!

TO HATCH NEW EGGS: Press dial when asked to open drawer.

TO FEED BITZEE: Press dial to access the Main Menu. Turn dial until you find the Feed icon. Press dial to select.

3

MAIN MENU



From home screen, PRESS dial to enter Main Menu.



TURN dial to scroll through icons.



PRESS dial to select.



SCROLL to Back icon and PRESS dial to exit Main Menu.



TO RETURN TO HOME SCREEN FROM ANY MENU, PRESS and HOLD DIAL for 3 SECONDS.



SWAP

Change which 4 of your Bitzee are shown on the home screen.



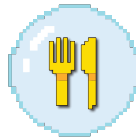
SHOP

Redeem coins you've earned to get new eggs, games, themes, and customize colors for your Bitzee.



LOVE METER

See how close your Bitzee are to evolving.



FEED

Feed your Bitzee with or without pellets.



SETTINGS

Adjust volume or screensaver, or reset Aquarium.



LIGHTING

View and choose your collected lighting themes.



GAMES

View and play games you get at the shop.

4

NEEDS MESSAGES

Your Bitzee will send a message if they need something. Don't ignore these or they will swim away! You'll need to hatch them with a new egg to get them back.



FIGHT

2 Bitzee may start fighting. End fights by knocking on the tank.



CLEAN

Your Bitzee may get dirty. Clean them by turning the dial.



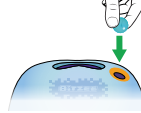
LOVE

Your Bitzee need love to evolve. Dip finger into the tank to give them some attention.



FEED

Your Bitzee will get hungry. Give them a pellet or choose the Feed icon from the Main Menu.



EVOLVE

Take care of your Bitzee and they will evolve when their Love Meter is full.



COMBINE

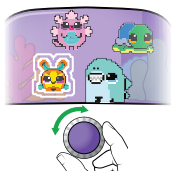
Some Bitzee can combine together to evolve when they are in the tank at the same time. Look for their partner in the message bubble or on the Collector Sheet!



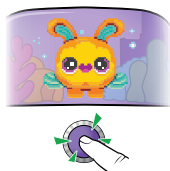
5

SPOTLIGHT MODE

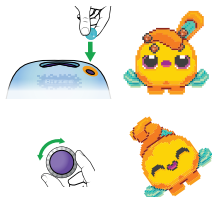
Zoom to interact with 1 character.



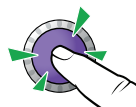
Turn dial to highlight a character.



Press dial to select.



Dip, knock, feed, and turn dial for new interactions.



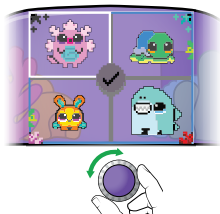
Press dial to return to the home screen.

6

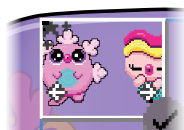


SWAP BITZEE

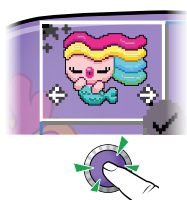
Change which 4 Bitzee are shown on your home screen.



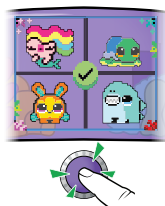
Turn dial to highlight a character.



Press dial, then turn to scroll through your collected Bitzee.



Press dial to select the character you want to view on the home screen.



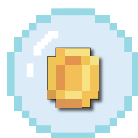
Swap more Bitzee or select check mark to lock in your new home screen view.

7



SHOP

Unlock items with coins you've collected from playing games or popping coin bubbles.



Knock on the tank or dip finger to pop coin bubbles.





GAMES
Get new mini-games.



LIGHTING
Get new lighting



CUSTOMIZE COLORS
Permanently change the color of your Bitzee.



EGGS
Get eggs to hatch new Bitzee.



COMMON EGG



RARE EGG



LEGENDARY EGG



MYSTERY

Follow the prompts to hatch your Bitzee egg.

8



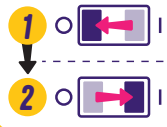
MINI-GAMES



Play mini-games to collect coins that you can redeem at the shop.



TO QUIT A MINI-GAME AT ANY TIME, turn toy off and on again.



RAY GLIDER

Catch up to submarine by swimming through yellow rings. Turn dial to catch rings or coins, and avoid boots, nets and machine parts.



BUBBLE POP

Turn dial to highlight bubbles with coins, and press dial button to pop them as fast as possible.



WHALE MUNCH

Feed Baby Whale until he's full or time runs out. Dip your finger in the aquarium or press the dial button to push food into his mouth as it passes over him. Score more points for the food he asks for and avoid feeding him trash.



SEEK & SPOT

Turn dial to move flashlight and search for the thief fish. To catch them, keep the spotlight on them as they run away. Press the dial button to switch flashlight direction between left/right and up/down.



SUB SNATCH

Turn dial to move your submarine over treasure, then press dial button to lower your claw and grab it. Don't let your claw touch sharks, swordfish or electric eels, or you could sink!



GOLDFISH JUMP

Turn dial to aim in the direction of your jump. Hold dial button down to charge up, then release to jump. Turn dial to steer in mid-air. Jump to collect the key and bring it to the treasure chest to win.



HERMIT HEIST

Help Hermit Crab reach the treasure chest before time runs out. Turn dial to move and stop turning to hide in his shell. Hide when Star wakes up so he doesn't see you! Hide to block rolling urchins, and turn dial slowly to move quietly over puddles and boards.



SPEEDY SEAHORSE

You play as Pink Seahorse. Win the race by using green boost items on yourself and red obstacle items on your opponents. The item wheel will spin automatically. Press the dial button when the arrows line up with the lane you want to use the item in.



SETTINGS MENU

Scroll through the Main Menu until you see the Settings icon. Press dial to select.



ADJUST VOLUME

Select to change the volume.



SCREENSAVER MODE

Adjust when the Aquarium powers down due to inactivity.

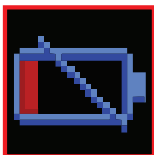


RESET BITZEE

⚠ CAUTION - THIS ACTION CAUSES A FACTORY RESET AND ERASES ALL EXISTING PLAY HISTORY

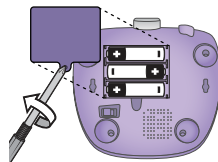
Touch and hold the screen to start the countdown. Do not lift your finger until the countdown finishes and you hear the alarm sound effect. Your Bitzee is now reset to the on-shelf demo.

REPLACE BATTERIES



LOW BATTERY WARNING

Before replacing batteries, turn Aquarium off, or your progress may be lost.



Spin Master Ltd., 225 King Street West, Toronto ON M5V 3M2 Canada
Spin Master Inc., PMB #10053, 300 International Drive, Suite 100, Williamsville, NY 14221
Spin Master International B.V., Kingsfordweg 151, 1043 GR Amsterdam, NL
Spin Master Australia Pty Ltd, Level 9, 205 Pacific Hwy, St Leonards, NSW 2065
Spin Master Toys UK Ltd, Meridian House, Fieldhouse Lane, Marlow, Buckinghamshire, SL7 1TB, UK

Patent information: patents.spinmaster.com
TM & © 2026 Spin Master Ltd. All rights reserved.

MADE IN CHINA

⚠ WARNING: CHOKING HAZARD - Small parts.
Not for children under 3 years.

T22911_0001_20156202_GML_PTW_R1_EN

