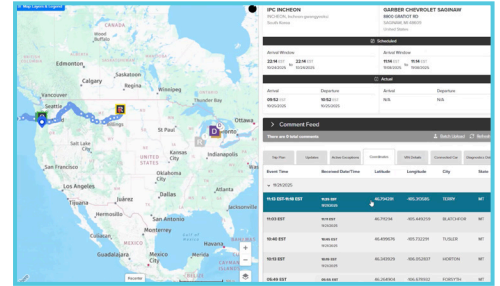




INVENTORYVIEW™

SOLUTION OVERVIEW

Real-time insights, updates and collaboration on Finished Vehicle Inventory



Drive efficiency, reduce costs, and improve transit times with real-time inventory intelligence across your entire finished vehicle network.

Your finished vehicle network is the backbone of customer satisfaction and operational efficiency. Yet when vehicles move across assemblies, ports, upfitters, distribution centers, via a range of transportation modes, visibility gaps emerge, leading to overcapacity penalties, inefficient resource allocation, and missed service targets.

Introducing InventoryView, delivering real-time insights and proactive alerts on finished vehicle inventory across your entire network. InventoryView provides network-wide visibility for shippers, facility-level insights for partners and yard managers, and carrier-specific inventory tracking for carriers. With access to OEM-committed ETAs, pipeline forecasting, daily operational metrics, and intelligent alerts, all stakeholders can plan precisely and execute confidently.

All of this contributes to improved transit times, reduced network costs, proactive capacity management, and enhanced customer satisfaction.



LIVE INVENTORY DASHBOARD

See your complete network inventory in real-time with instant capacity visibility across all locations.



RELIABLE ETA'S

Access OEM committed ETAs with complete transparency so all stakeholders stay aligned.



REAL-TIME LOCATION TRACKING

Track vehicles across your entire network pipeline with interactive visibility from plant to delivery.



DRIVE DAILY SAVINGS

Reduce overcapacity expenses by \$4-\$10 per VIN per day with smarter inventory management.



PERFORMANCE ANALYTICS

Monitor daily arrivals, departures, and aging inventory to optimize operations continuously.



INTELLIGENT INVENTORY SEARCH

Search your entire network by VIN to quickly locate any vehicle's status and forecasted arrival.



AVOID OVERCAPACITY PENALTIES

Receive proactive alerts on capacity risks so you can prevent costly penalties before they occur.



FREIGHTVERIFY™ Part of OVERHAUL