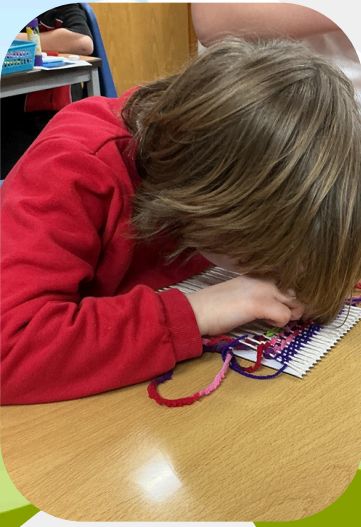


Our School Newsletter

13th February 2026

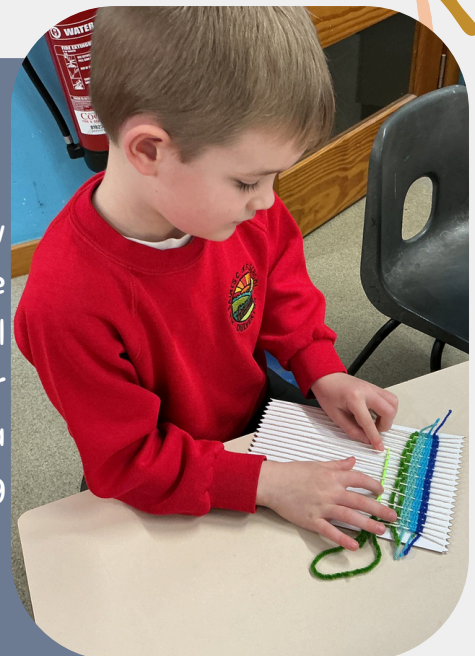


Haddon

We have nearly reached half term, and half way through the academic year. The children have done so many things and learnt so much and there is much more to come. In the last fortnight the children have looked at maps of London and found where the key landmarks are situated, they have made collagraphy boards and created textured prints and learnt about how daylight hours change throughout the year. In forest school we revisited our learning on the senses by creating outlines of the human body and pointing out which part is linked to each different sense.

Landacre

Over this half term, we have been learning about how weaving has changed and developed over time. We are now creating our own colourful and textured wall hangings by weaving different types of wool on our mini-looms. After half term, we may need a little extra help to finish them off, so feel free to practise threading needles at home!



Burridge



Another action-packed and fun-filled couple of weeks for Burridge Class. In maths, we have started our work on fractions by learning how to multiply different types of fractions by whole numbers, visualising the problem before attempting to solve it. In English, we have started a new book called The Viewer, the whole class have loved exploring the rich illustrations and trying to find clues to what the book is about. We've then completed further work on different sentence types and how they can be used to create a certain effect in their writing. In the broader curriculum, we have continued our work on bridges in DT, exploring how different designs suit different situations. We then applied this in real world situations, with support from the Exmoor Rangers, to see how bridges are planned, designed and then implemented in challenging landscapes.

The Link

Children in The Link have been developing finger knitting and knotting skills and creating friendship bracelets for their school challenge. The bird feeders continue to be popular and our Great British Birdwatch numbers are in! They have also attracted a number of very cheeky squirrels!



Little owls

We have had a fun half term. We've enjoyed reading Hairy McClary from Donaldson's Dairy and doing lots of activities involving dinosaurs. We hope you all have a lovely week off.

Reminders / Important Info

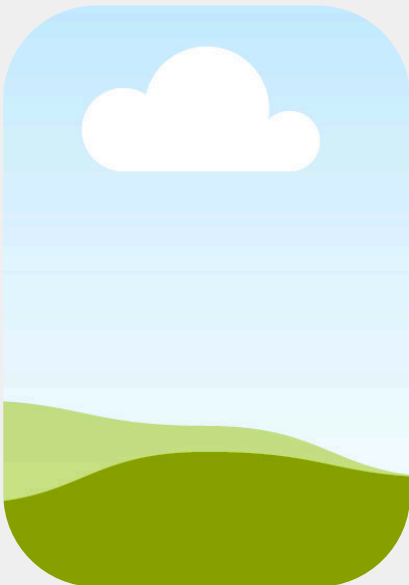
To help prevent the spread of illness, please remember that children (and adults) should stay away from pre-school, school, or work for 48 hours after their last episode of sickness or diarrhoea.

This 48-hour rule is important because individuals can still be infectious even after symptoms have stopped.
For more detailed advice, you can find up-to-date guidance on the NHS website
[website](#)

Friends of Dulverton Schools

Tuck shop
*Friday 27th February
*Friday 13th March
*Friday 27th March

Link to sign up to Easy Fundraising:
[CLICK HERE](#)



Message from Mrs Stenner

Dear Parents and Carers,

It has been a very busy half term, and what a joy it is to read through the achievements of each class in this newsletter. We are so proud of how the children live out our values and make our school a wonderful place to be. Have a lovely half term break. School begins again on Monday 23rd February.

Mrs Stenner



Thanks to Xmoor Rox
for donating £1000
to FODS!



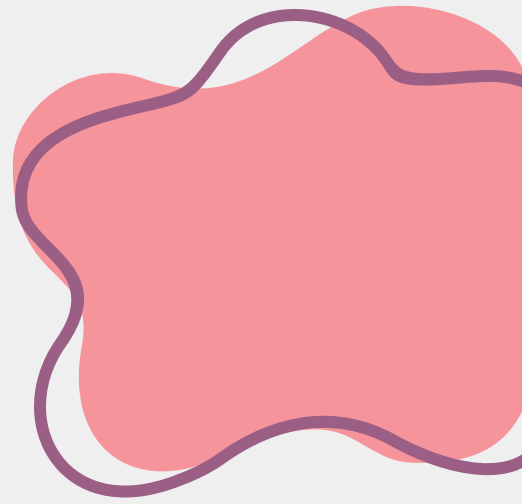
Our Value for this
term - Community

Our Rules:
Be Safe, Be
Respectful,
Be Ready



Wellbeing Support

- [Click here for Support for Families](#)



Calendar Dates

Upcoming Dates:

Mon 16th Feb – Fri 20th Feb: Half Term

Weds 25th Feb – Brass workshop

Fri 27th Feb – School Science fair deadline

Thu 5th March – World Book Day

Fri 6th March – Generation Exmoor Burr ridge

Sat 28th March – Easter Bingo

Sat 2nd May – Exmoor Challenge

Fri 22nd May – Sponsored Colour Run

Sat 27th June Summer Fair



Events calendar now
live on our website.
[Click here to find out what
is happening in your school!](#)





Website Information

- [What we are learning – AS](#)
- [What we are learning – DJ](#)
- [Term Dates](#)
- [Newsletters](#)
- [Events](#)
- [Online Safety](#)
- [Vision & Values – AS](#)
- [Vision & Values – DJ](#)



Contact Details

SAFEGUARDING CONCERNS –

Our designated safeguarding lead is Mrs Stenner.

Our deputy leads are Mrs Blackmore & Mrs Arch

Click [here](#) for all Safeguarding details.

GENERAL SCHOOL QUERIES –

Contact Mrs Herbert in the School Office:

[01398 323231](tel:01398323231)

allsaints@moorlandfed.co.uk

dulvertonjunior@moorlandfed.co.uk

Mrs Stenner

nicolastenner@moorlandfed.co.uk

Mrs Arch

rosyarch@moorlandfed.co.uk

