

# Our School Newsletter

2nd April 2026



## Ash

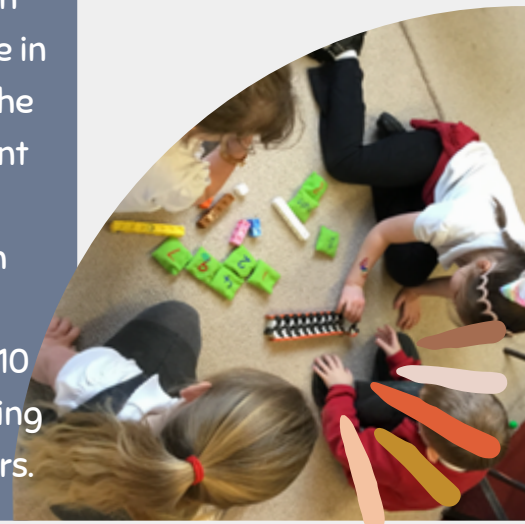
.....

This fortnight, Ash class have been full of creativity! In Design Technology, they have sewn Easter keyrings, enhancing their fine motor skills and artistic expression. In English, they are creating brochures about Kielder Water, working on their understanding of formal and informal writing. In Geography, the children are completing their mountains topic by crafting fact files that highlight key features and facts. Lastly, in PE, our athletes are developing netball skills, focusing on teamwork and strategy, boosting their confidence.

## Orchid

.....

Orchid Class have had a wonderfully busy few weeks. The children loved creating their Easter crafts for the church, taking great pride in their careful making. At Forest School they have been exploring the village and noticing the seasonal changes, comparing the different plants emerging around them. In Science, the class have been planting seeds and investigating what plants need to grow, with plenty of curious questions and careful observations. In maths, Reception have been working hard on counting backwards from 10 with growing confidence, while the older children have been spotting patterns when adding and subtracting ten from two-digit numbers.



# Forest School

We've had a activity filled fortnight of forest school sessions, from cleaver tea to fire donuts, from primrose planting to path mowing and bird box building to bite balm and sting salve making. The wild garlic is in full flush, lady's smock is almost in bloom and the first bluebells are emerging. If you're looking for a wonderful way to spend an hour of so on a sunny day in the holidays, do consider having a bluebell picnic in Langford Nature Reserve.



## Reminders / Important Info

We have noticed an increased number of cars causing congestion outside the school, please remember parking is always available at The Martlet Inn, please be respectful of the local residents

### Message from ... Mr Moise-Souch

As we come to the end of another busy and enjoyable term, I want to take a moment to celebrate everything the children have achieved over the past few weeks. Our Easter Church Service was a real highlight, with pupils sharing readings, songs, and reflections beautifully. It was wonderful to see the whole school community come together for such a meaningful occasion.

In school, the children have thrown themselves into a wide range of creative Easter activities—from arts and crafts to themed writing and outdoor learning. Their enthusiasm and imagination have been a joy to see, especially as the weather has begun to improve and we've been able to enjoy more time outside.

I would like to wish all our families a restful, enjoyable Easter break. Thank you for your continued support throughout the term.

We look forward to welcoming everyone back on Monday 20th April.

All the best,





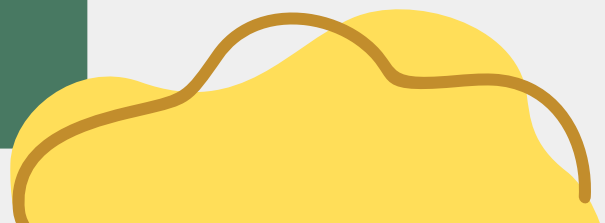
Celebrating our achievements!



Our Value for this term

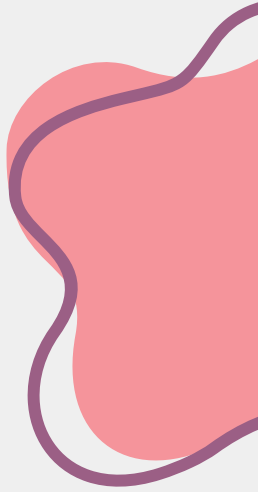
.....  
**Creativity**

Be creative in God's hands with his guidance



# Wellbeing Support

- [Click here for Support for Families](#)



## Calendar Dates

Dates for the next fortnight:

Monday 20<sup>th</sup> April

First Day Term 5

Wednesday 22<sup>nd</sup> April ~ 24<sup>th</sup> April

Year 4 Pinkery Residential

Tuesday 28<sup>th</sup> April

Superhero Day

Tuesday 5<sup>th</sup> May

Fire & Rescue Talk in school



View our Online Events  
Calendar

[Click here to find out what  
is happening in your school!](#)



## Website Information

---

- [What we are learning](#)
- [Term Dates](#)
- [Newsletters](#)
- [Events](#)
- [Online Safety](#)
- [Vision & Values](#)



## Contact Details

---

### SAFEGUARDING CONCERNS –

Our designated safeguarding lead is Mr Moise–Souch.  
Our deputy leads are Mrs Davidson and Mrs Hickman  
Click [here](#) for all Safeguarding details.

### GENERAL SCHOOL QUERIES –

Contact Mrs Barnes in the School Office:  
01823 400483  
[langfordbudville@moorlandfed.co.uk](mailto:langfordbudville@moorlandfed.co.uk)

Mr Moise–Souch  
[langfordbudville@moorlandfed.co.uk](mailto:langfordbudville@moorlandfed.co.uk)

Mrs Hickman  
[helenhickman@moorlandfed.co.uk](mailto:helenhickman@moorlandfed.co.uk)

