



Products ▾

Industries

The company

Catalog

Contact us



+49 9341 848 5500

Products > Hose lines > Delivery hoses

PUR | CFX® PUR 950 AS

FACTS

- + Flexible conveyor hose for abrasive bulk material
- + Medium-weight design, highly abrasion-resistant
- + Temperature range: -40°C to 90°C



DOWNLOADS

 Delivery hoses (EN)

 Delivery hoses (EN)

Article no.	Ø [mm]	WS [mm]	L [m]
S0AS-PUR-0300-10	30,0	approx. 0.7	10,0
S0AS-PUR-0380-10	38,0	approx. 0.7	10,0
S0AS-PUR-0400-10	40,0	approx. 0.7	10,0
S0AS-PUR-0450-10	45,0	approx. 0.7	10,0
S0AS-PUR-0500-10	50,0	approx. 0.7	10,0
S0AS-PUR-0550-10	55,0	approx. 0.7	10,0
S0AS-PUR-0600-10	60,0	approx. 0.7	10,0
S0AS-PUR-0650-10	63,0-65,0	approx. 0.7	10,0
S0AS-PUR-0700-10	70,0	approx. 0.7	10,0
S0AS-PUR-0760-10	75,0-76,0	approx. 0.7	10,0
S0AS-PUR-0800-10	80,0	approx. 0.7	10,0
S0AS-PUR-0889-10	89,0-90,0	approx. 0.7	10,0
S0AS-PUR-1020-10	100,0-102,0	approx. 0.7	10,0
S0AS-PUR-1100-10	110,0	approx. 0.7	10,0

PUR | CFX® PUR 955 AS

FACTS

- + Flexible conveyor hose for abrasive bulk material
- + Heavy-duty design, highly abrasion-resistant
- + Temperature range: -40°C to 90°C



Article no.	Ø [mm]	WS [mm]	L [m]
-------------	--------	---------	-------



Article no.	Ø [mm]	WS [mm]	L [m]
S1AS-PUR-0300-15	30,0	approx. 1.4 - 1.5	15
S1AS-PUR-0380-20	38,0	approx. 1.4 - 1.5	20
S1AS-PUR-0400-20	40,0	approx. 1.4 - 1.5	20
S1AS-PUR-0450-15	45,0	approx. 1.4 - 1.5	15
S1AS-PUR-0500-20	50,0	approx. 1.4 - 1.5	20
S1AS-PUR-0550-15	55,0	approx. 1.4 - 1.5	15
S1AS-PUR-0600-20	60,0	approx. 1.4 - 1.5	20
S1AS-PUR-0650-20	63,0-65,0	approx. 1.4 - 1.5	20
S1AS-PUR-0700-10	70,0	approx. 1.4 - 1.5	10
S1AS-PUR-0760-10	75,0-76,0	approx. 1.4 - 1.5	10
S1AS-PUR-0800-10	80,0	approx. 1.4 - 1.5	10
S1AS-PUR-0889-10	89,0-90,0	approx. 1.4 - 1.5	10
S1AS-PUR-1020-10	100,0-102,0	approx. 1.4 - 1.5	10
S1AS-PUR-1100-10	110,0	approx. 1.4 - 1.5	10
S1AS-PUR-1140-10	114,0-115,0	approx. 1.4 - 1.5	10

PUR | CFX® PUR 956 AS

FACTS

- + Flexible conveying hose for extremely abrasive bulk material
- + Super heavy-duty design, extremely abrasion-resistant
- + Temperature range: -40°C to 90°C



Article no.	Ø [mm]	WS [mm]	L [m]
S3AS-PUR-0320-10	32,0	approx. 2.0 - 2.5	10
S3AS-PUR-0380-10	38,0	approx. 2.0 - 2.5	10
S3AS-PUR-0400-10	40,0	approx. 2.0 - 2.5	10
S3AS-PUR-0450-10	45,0	approx. 2.0 - 2.5	10
S3AS-PUR-0500-10	50,0	approx. 2.0 - 2.5	10
S3AS-PUR-0550-10	55,0	approx. 2.0 - 2.5	10
S3AS-PUR-0600-10	60,0	approx. 2.0 - 2.5	10
S3AS-PUR-0650-10	65,0	approx. 2.0 - 2.5	10
S3AS-PUR-0700-10	70,0	approx. 2.0 - 2.5	10
S3AS-PUR-0760-10	76,0	approx. 2.0 - 2.5	10
S3AS-PUR-0800-10	80,0	approx. 2.0 - 2.5	10
S3AS-PUR-0900-10	90,0	approx. 2.0 - 2.5	10
S3AS-PUR-1000-10	100,0	approx. 2.0 - 2.5	10
S3AS-PUR-1020-10	102,0	approx. 2.0 - 2.5	10
S3AS-PUR-1100-10	110,0	approx. 2.0 - 2.5	10
S3AS-PUR-1150-10	115,0	approx. 2.0 - 2.5	10

WORM DRIVE CLAMPS

FACTS

- + For fastening medium to heavy hoses
- + Quick and easy to install
- + Material: galvanized steel



Article no.	SB [mm]	BB [mm]
S-GB-SCHELLE-0360-0390	36,0 - 39,0	20
S-GB-SCHELLE-0400-0430	40,0 - 43,0	20
S-GB-SCHELLE-0440-0470	44,0 - 47,0	20
S-GB-SCHELLE-0480-0510	48,0 - 51,0	20
S-GB-SCHELLE-0520-0550	52,0 - 55,0	20
S-GB-SCHELLE-0560-0590	56,0 - 59,0	20
S-GB-SCHELLE-0590-0630	59,0 - 63,0	20
S-GB-SCHELLE-0640-0670	64,0 - 67,0	25
S-GB-SCHELLE-0680-0730	68,0 - 73,0	25
S-GB-SCHELLE-0730-0790	73,0 - 79,0	25
S-GB-SCHELLE-0800-0850	80,0 - 85,0	25
S-GB-SCHELLE-0860-0910	86,0 - 91,0	25
S-GB-SCHELLE-0980-1030	98,0 - 103,0	25
S-GB-SCHELLE-1040-1120	104,0 - 112,0	25
S-GB-SCHELLE-1130-1210	113,0 - 121,0	25
S-GB-SCHELLE-1220-1300	122,0 - 130,0	25

WORM DRIVE CLAMPS

FACTS

- + For fastening lightweight hoses
- + Quick and easy to install
- + Material: galvanized steel



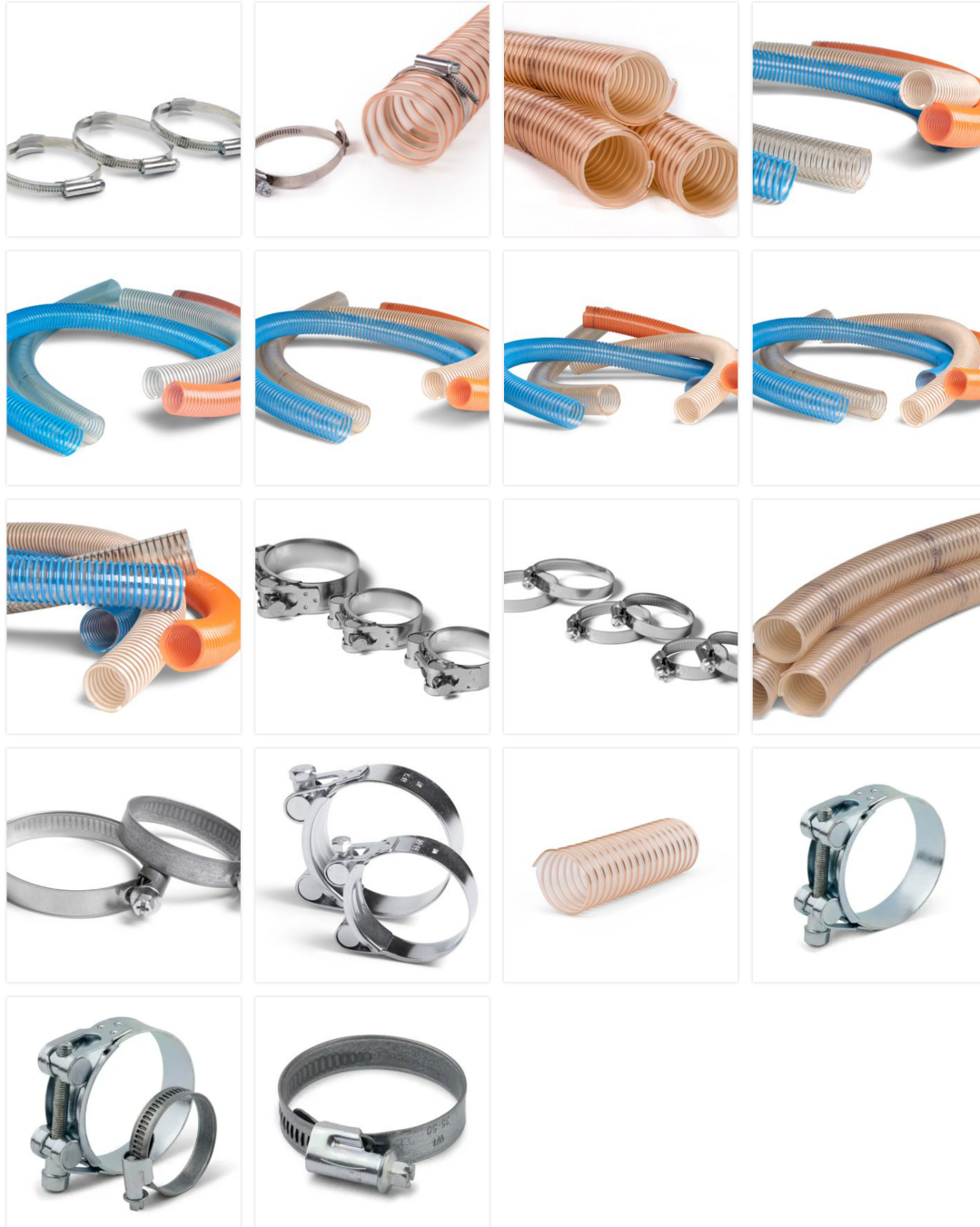
Article no.	SB [mm]	BB [mm]
S-SG-SCHELLE-0300-W1	30,0 - 45,0	12
S-SG-SCHELLE-0400-W1	35,0 - 50,0	12
S-SG-SCHELLE-0500-W1	40,0 - 60,0	12
S-SG-SCHELLE-0600-W1	50,0 - 70,0	12
S-SG-SCHELLE-0650-W1	60,0 - 80,0	12
S-SG-SCHELLE-0760-W1	70,0 - 90,0	12
S-SG-SCHELLE-0890-W1	80,0 - 100,0	12

PRODUCT DESCRIPTION

Our portfolio includes all hose qualities for a wide range of applications In the bulk goods industry / plastics industrv. material is mainly transported from A to B using PUR or PVC hoses. with PUR hoses being used more

industry, materials being used are mainly stainless steel and plastic. They are used frequently. All hoses for the plastics industry are available from stock at Michel Tube. Suitable hose clamps round off the portfolio.

PICTURE GALLERY



[Products](#) > [Hose lines](#) > [Delivery hoses](#)





pipes | bends | couplings

Michel Tube Engineering GmbH

Industriepark A81
Falk-Müller-Straße 30
97941 Tauberbischofsheim

info@michel-tube.com

Tel.: +49 9341 848 550-0

Fax: +49 9341 848 550-5



Products

Round tubes	Pipe bend
Tube fittings	Pipe connector
Pipe couplings	Hose lines
Hose couplings	Coded labeling
Material distributor	Suction lances
Magnetic separator	System components

Industries

The company

Catalog

Contact us

