

Division of Procurement

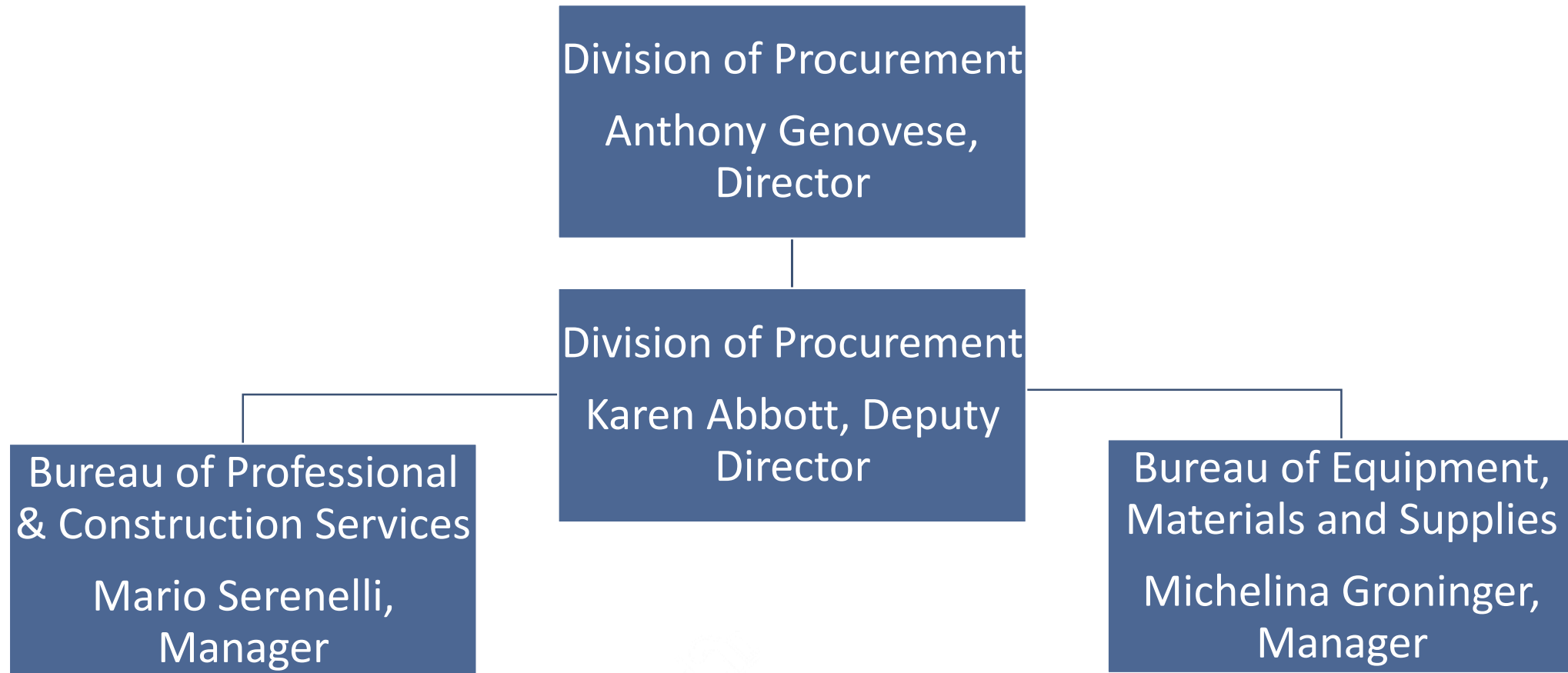
NJDOT 2025
CONTRACTOR VENTURE FORUM



Mario Serenelli

Manager, Professional & Construction Services, Procurement
New Jersey Department of Transportation

Division of Procurement



Primary Functions

Professional Services

- Cost Basis Approvals
- Prequalification
- Technical Proposals
- Bid Express
- Consultant Selection Committee
- Debriefings
- Agreements Development
- Consultant Evaluation System

Construction Services

- Prequalification
- Goal Establishment and Compliance
- Advertising
- Receipt of Bids – Bid X
- Award
- Execution of Contracts
- Prequalification Committee

Equipment Materials & Supplies

- Purchasing
 - State Contracts
 - Direct Purchase Authority
 - Waiver
 - Treasury Purchase
- State Contracts/DOT Requirements
- Emergency Purchases
- Compliance/Training
 - Ethics
 - Procurement
- Vendor Complaints
- Purchasing Card
 - E Commerce

Sub-consulting/Sub-contracting

Professional Services

Sub-consulting:

- Prequalification is not required to sub-consult.
- Cost basis approval is required for both prime and sub-consultants

Construction Services

Sub-contracting:

- Prequalification is not required to subcontract, unless project specifications require as such
- DC-18 is required be submitted to the Construction Engineer

Why Become Prequalified with NJDOT?

- To be eligible to bid as a prime contractor for Department projects or solicit as a prime consultant for Department technical proposals
- To be eligible to subcontract for Department projects, if project specifications require as such
- Subdivisions of the State of New Jersey (e.g. counties and municipalities) require prequalification with the Department to be able to bid on their projects and solicit on their technical proposals.

How Do I Become Prequalified?

As A Prime Consultant:

- Download and complete PS-24
- Submit electronically via email
- Remit payment electronically

As A Prime Contractor:

- Download and complete the Contractor's Financial and Equipment Statement Experience Questionnaire and Past Performance Record, Form DC-74A
- Attach accompanying financial statements and submit electronically via email
- Remit payment electronically

Consultant Prequalification Primary Disciplines

❖ PRIMARY DISCIPLINES:

Discipline CODE	DESCRIPTION	TYPES OF TECHNICAL/ PROFESSIONAL STAFF	Exempt from Cert. of Auth
B-1	Bridge Design – Non Movable Structures	Structural Engineers	
B-4	Bridge Design – Movable Structures	Structural, Mechanical, and Electrical Engineers	
C-6	Construction Inspection – Roadway / Bridge	Construction Managers or Civil Engineers	
E-3	Environmental Services	Environmental Specialists or Engineers or Planners	E
E-4	Environmental Permitting	Environmental Specialists, Engineers, or Planners	E
G-2	Geotechnical Design	Civil and Geotechnical Engineers	
H-1	Highway Design	Engineers	
H-3	Hydrology & Hydraulics	Hydrologists or Civil Engineers	
I-1	Bridge Inspection – Simple Bridges	Structural Engineers w/ NBIS	
I-3	Bridge Inspection – Movable Bridges	Structural Engineers w/ NBIS	
I-5	Bridge Inspection – Complex Bridges	Structural Engineers w/ NBIS	
M-9	Maritime Planning and Engineering Services	Engineers or Planners	
S-1	Surveying	Surveyors	
T-1	Traffic Engineering	Civil and Traffic Engineers	
T-7	Transportation Planning	Engineers or Planners	E

Consultant Prequalification Project Specific Disciplines

- ❖ **PROJECT SPECIFIC DISCIPLINES:** Disciplines that can be submitted only if NJDOT has a posting using those below and only if NJDOT is notified in writing of your intent to submit a Technical Proposal.

A	Discipline CODE	DESCRIPTION	TYPES OF TECHNICAL/ PROFESSIONAL STAFF	Exempt from Cert. of Auth
	A-1	Aerial Photography Surveys	Surveys or Photogrammetrists	
	A-3	Archaeology Services	Archaeologists	E
	A-5	Asbestos Remediation	Environmental or Asbestos Safety Control Monitor	E
	A-6	Aviation Services	Planner Aviation Economist	
	A-7	Air Quality Analyses Requirements	Engineers or Planners	E
	C-1	Claim/Litigation Support/Scheduling	Engineers or Designers, and Schedulers	E
	C-5	Construction Inspection - Intelligent Transportation System (ITS)	Electrical and Traffic Engineers or Planners	
	C-7	Contamination Screenings	Engineers or Environmental Specialists	E
	E-2	Intelligent Transportation System (ITS) Facilities	Electrical and Traffic Engineers or Planners	
	E-5	Environmental Physical Site Investigation	Environmental or Civil Engineers and Specialists	
	E-7	Environmental Remedial Support	Environmental or Civil Engineers and Specialists	
	E-8	Electrical Requirements	Electrical Engineers	
	G-1	Geographical Information Systems	Surveyor, Systems Analyst, or Programmer	
	G-3	Global Positioning Surveys	Surveyors or Civil Engineers	
	G-4	Goods Movement	Planners	E
	H-2	Historic Architectural Survey / Mitigation	Architectural Historians	E
	I-6	Inspection of Dams	Engineers	
	L-1	Landscape Architecture	Landscape Architects	
	M-1	Market & Customer Research – Transportation	Planners	E
	M-6	Prestressed/Precast Concrete Inspection	Prestressed Concrete Institute (PCI) Levels I, II, and III	
	M-7	Inspection of Structural Steel and Welding	AWS/CWI with ASNT Level II or III	
	M-8	Materials Inspection and Engineering	Project Manager	

Consultant Prequalification Project Specific Disciplines

- ❖ **PROJECT SPECIFIC DISCIPLINES: Disciplines that can be submitted only if NJDOT has a posting using those below and only if NJDOT is notified in writing of your intent to submit a Technical Proposal.**

A	Discipline CODE	DESCRIPTION	TYPES OF TECHNICAL/ PROFESSIONAL STAFF	Exempt from Cert. of Auth
	N-1	Noise Measurement and Analysis	Engineers or Planners	E
	P-2	Pavement Management Systems	Civil Engineers, System Analysts, or Programmers	
	P-3	Pedestrian and Bicycle Facilities	Engineers or Planners	
	P-4	Public Involvement – Transportation Issues	Planners	E
	P-6	Pavement Design	Engineers	
	R-2	Right of Way-Services	Relocation and Acquisition Specialists	E
	S-2	Subsurface Utility Engineering (SUE)	Engineers or Technicians	
	T-3	Transportation Access Management	Engineers or Planners	
	T-4	Transportation Data Collection	Planners or Technicians	E
	T-5	Transportation Demand Modeling	Engineers or Planners	
	T-12	Emergency Management Planning	Planners	
	U-2	Utility Engineering	Civil, Structural, or Mechanical Engineers	

Contractor Prequalification Work Types

List of All Primary Work Type Classifications			
1. Grading	13. Fencing	25. Milling	37. Machine Sweeping
2. Paving	14. Rest And Service Buildings	26. Blasting	38. Punch List Work
3. Grading & Paving	15. Guide Rail	27. Remove Petroleum, Debris & Hazardous Materials	39. Precast Segmental Bridge Construction
4. Bridge	16. Impact Attenuators Installation	28. Health And Safety Plan	40. Environmental Dredging
5. Heavy Highway	17. Standard Pavement Markings	29. Sampling And Analysis	41. Moveable Bridge Installation/Rehabilitation
6. Landscape	18. Long Life Pavement Markings	30. Design Services (Subcontracting Only)	42. Complex Truss Rehabilitation
7. Electrical	19. Pneumatic Mortar Or Guniting	31. Modified Design Build	43. Navigational Dredging
8. General Concrete	20. Sand Drains And Sand Fill	32. Deleted and made part of work type classification 33	44. Electric Vehicle (EV) Charging Stations
9. Miscellaneous	21. Permanent Signs	33. Intelligent Transportation Systems	45. Slide-In Bridge Superstructure
10. Demolition	22. Underground Utilities	34. Deleted and made part of work type classification 33	
11. Dewatering	23. Waterproofing	35. Rumble Strips	
12. Dredging	24. Maintenance And Protection Of Traffic	36. Rehabilitation Of Movable Bridge Houses	

Professional Services Selections

Fiscal Year	Number of Selections	Total Value of Agreements (in Millions)
2024	120	\$380.616
2023	161	\$351.980
2022	164	\$365.454
2021	144	\$359.290
2020	95	\$147.811
2019	173	\$335.760
2018	98	\$219.579
2017	96	\$228.256
2016	109	\$135.282

Construction Services Awards

Fiscal Year	No. of Contracts Awarded	Total Value of Contracts Awarded (in Millions)
2024	115	\$1,245.5
2023	117	\$932.2
2022	107	\$875.8
2021	118	\$1,226.3
2020	89	\$1,031.9
2019	122	\$955.9
2018	88	\$631.7
2017	127	\$1,154.2
2016	92	\$615.8
2015	94	\$673.7
2014	99	\$791.6
2013	89	\$1,107.9
2012	104	\$615.5
2011	97	\$419.4
2010	92	\$684.1
2009	116	\$1,062.4

Construction Services Awards

Fiscal Year	Awarded Contracts at Value Less Than \$10M	Total Contracts	Percentage	Cumulative Value of Awarded Contracts Less Than \$10M	Total Value of All Contracts	Percentage
2024	86	115	74.78%	\$399,964,879.65	\$1,245,496,841.83	32.11%
2023	96	117	82.05%	\$458,586,656.75	\$910,474,385.84	50.37%
2022	90	107	84.11%	\$409,739,483.27	\$875,848,037.47	46.78%
2021	96	118	81.36%	\$472,515,554.35	\$1,226,347,269.42	38.53%
2020	63	89	70.79%	\$306,540,938.34	\$1,031,894,647.10	29.71%
Total	431	546	78.94%	\$2,047,347,512.36	\$5,290,061,181.66	38.70%

Resources

Professional Services

- Cost Basis Approval ICQ
- PS-24 Prequalification Application
- Anticipated Solicitations
- Current Solicitations
- Consultant Selections

Construction Services

- DC-18 for sub-contracting
- DC-74A Prequalification Application
- Planned Advertisements
- Current Advertised Projects
- Bid Results
- Awarded Projects

