



THE
**Women's
Centre**
CORNWALL

Preventing Further Harm:

A whole system approach for women involved
in the Criminal Justice System in Devon &
Cornwall

Wednesday 25th March



Peninsula Women's Alliance



**The JABBS
Foundation**
for women and girls

Our Aims today:

- To learn and be inspired
- To make connections and set up joint work together to improve how the criminal justice system interacts with women in Devon and Cornwall
- To build momentum for earlier help for women as soon as they come into contact with the criminal justice system
- To find ways to reduce the harm caused by women's offending, how the criminal justice system deals with them, and the impact on their children and communities

A Woman's Journey Through The Criminal Justice System

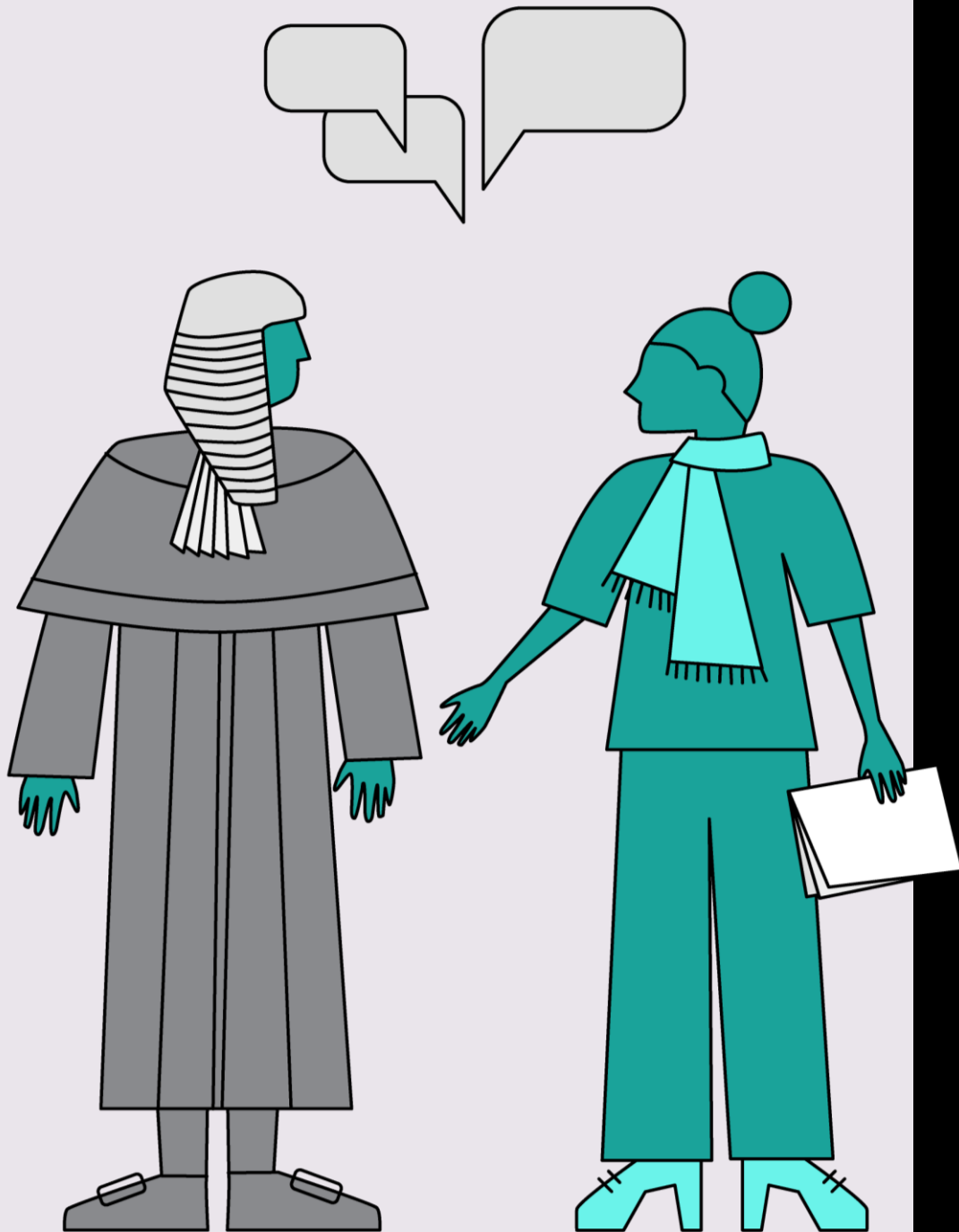
**The Women's Centre Cornwall
Lived Experience Group**

Becky Bowie and Natalie McKenzie



A Women's Journey through the Criminal Justice System





Intervening Early: Diverting Women from the Criminal Justice System

Preventing Further Harm Conference

25 March 2026 | Buckfast Abbey, Devon

Abii Phillips & Jason Kew
The Centre for Justice Innovation

Supported by the JABBS foundation for Women & Girls



Why This Matters Now: National Policy Landscape

The Policy Landscape

- 1 **Female Offender Strategy (2018)**
Commitment to reducing women’s imprisonment and expanding community alternatives.
- 2 **Concordat on Women in the CJS**
Cross-government commitment to a whole-system response to women’s needs.
- 3 **Gauke’s Independent Sentencing Review (2025)**
Recommends expansion of Intensive Supervision Courts and diversion.

Current Policy Priorities and Reforms

- 4 **Women’s Justice Board**
Leading a national programme to reduce women’s imprisonment and expand diversion and community solutions across the justice system.
- 5 **Whole System Approaches (WSA)**
Local partnership models coordinating diversion, support services and community responses for women.
- 6 **Current MoJ Reform Programme**
Expansion of Intensive Supervision Courts and other alternatives to custody.



FEATURED BY THE WOMEN'S JUSTICE BOARD	
Stage	Opportunity for diversion
Before contact with the CJS	Ensuring access to women-specific support for women at risk of contact with the CJS – including distinct support for Black, Asian, minoritised and migrant women, and for young women – allows for early intervention and prevention before contact with the CJS.
Point of arrest	Decision to divert from prosecution where possible, with referral into support – through non-arrest/outcome 22/conditional caution/other out of court disposal or deferred prosecution or Decision to prosecute where necessary, with referral into support, providing opportunity to demonstrate capacity for rehabilitation before trial and sentencing.
Court hearing on bail/remand	Decision to bail with referral into support instead of remanding into prison – focus on accommodation needed.
Trial process	Women defendants with specialist support will be better placed to participate in proceedings and provide contextual information to help prosecutors, defence lawyers and the court take proper account of the context for their alleged offence.
Sentencing	Decision to defer sentencing or impose Community Order or Suspended Sentence Order where possible, with attached support. ISCs key here. Where imprisonment cannot be avoided, planning for release can begin at the start of the sentence, with knowledge of the woman’s support needs.
Post-release	Effective referral into support as part of pre-release planning, through the gate and post-release, reduces risk of recall and/or reoffending.

Female Offender Strategy Dashboard

March 2026 update | Source: Russell Webster

Fewer women entering the Criminal Justice System

Female first time entrants

16,903

-0.1% change from 2023

Female arrests

↑ **111,070**

7.0% change from 2023/24

Prosecutions against women for TV licence evasion

↓ **20,402**

-16.7% change from 2023

Cautions and PNDs issued to women

↓ **9,636**

-6.0% change from 2023

Fewer women serving short custodial sentences

% sentenced to custody of all female outcomes

3%

0.5 pp change from 2023

Women sentenced to short term custody

↑ **4,313**

23.5% change from 2023

Receptions of women to short term custody

↑ **2,284**

2.8% change from 2023

% of women remanded in custody at Crown Court

↑ **33%**

1.2pp change from 2023

% remanded at Crown Court sentenced to custody

55%

-0.2pp change from 2023

Pathways That Work: Examples from Across England & Wales

Avon and Somerset Police Whole system Approach

Trauma-informed, gender-responsive pre arrest model of OOCR's and women's centre and justice collaboration – led by Rebecca Marshall OPCC

Metropolitan Police and women's centre Conditional Caution Scheme

women diverted via conditional cautions into Advance and Women in Prison services. Trauma-informed assessment, bespoke intervention package. Expanding to more boroughs.

Joint Street Outreach (multiple areas)

Police and women's centre caseworkers deliver joint outreach, reaching women in sex work and those who would not otherwise access services. Practical referrals into trauma-informed support.

Birmingham Women's Intensive Supervision Court (ISC)

31 women diverted from custody in 6 months (July 2023–Jan 2024). Women's centres at the heart of the model. Backed by Gauke Review as the model to replicate nationally.

Durham Checkpoint Scheme

Out of court resolution pathway. Women's centre provides assessment and support for up to 4 months. Completed = Outcome 22. Strong links between police, probation and women's centres.

Multi-Agency Vulnerability Meetings

Monthly meetings: police, probation, housing, drug & alcohol and women's centres. Named women at risk reviewed. Coordinated support plans put in place rapidly.

CJI Research Spotlight: Police & Women's Centre Partnerships

Centre for Justice Innovation briefing, February 2026

4 Key Barriers Identified

Cultural differences

Some officers resistant to women-specific diversion; some women's centre workers have low trust in police — complicating joint working

Restrictive eligibility criteria

Overly complex or narrow referral criteria reduce numbers accessing diversion; need simplification and flexibility

Logistical challenges

Security vetting delays limit access to custody suites for women's centre caseworkers — a practical but fixable barrier

Funding instability

Short-term contracts make it hard for women's centres to retain staff and sustain partnership commitments

What Makes Partnerships Work



Trauma-informed joint training

Shared understanding of women's pathways into the CJS builds mutual respect and trust between officers and centre workers



Simple, open referral routes

Removing complexity from referral criteria and using community resolution as default where appropriate



Named police champions

A dedicated liaison officer or SPOC within each force significantly improves referral rates and relationship quality



Joint outreach and co-location

Police and women's centre caseworkers working together builds trust with women and each other; co-location removes access barriers



Sustainable commissioning

Multi-year funding from PCCs and local commissioners anchors stable partnership working

Tips & Recommendations for Devon & Cornwall Partners

01

Appoint Women's Justice Champions in Policing

Name a dedicated women's justice SPOC in Devon & Cornwall Police and partner agencies. This single step has the biggest impact on referral rates. Link to NPCC Women's Justice portfolio and VAWG leads.

02

Simplify and Widen Out of Court Resolution Pathways

Review existing OOCR eligibility criteria. Default to community resolution linked to Women's Centre Cornwall and Trevi where appropriate. Adopt a system wide 'presumption of diversion' for low-level offending women.

03

Commission Joint Trauma-Informed Training

Build shared understanding of women's pathways and the Whole Systems Approach. Involve Peninsula Women's Alliance in designing and delivering training for police officers and custody staff.

04

Establish a Peninsula Women's Justice Partnership Board

Formalise existing collaboration. Include police, probation, judiciary, HMPPS, PCCs, women's centres and lived experience voices. Use WRNA as a shared assessment tool across the system. Work with health, housing and community partners to identify and support women before police contact.

05

Secure Multi-Year Funding for Women's Centres

PCC and local commissioner investment in stable, multi-year contracts for Women's Centre Cornwall, Trevi and partners is essential to sustaining any whole-system approach. The JABBS Foundation and evidence base make this a compelling case.

06

Learn From the Evidence – Then Act

Use CJJ's February 2026 briefing, the Women's Justice Board recommendations, the Sentencing Review and Birmingham ISC data to build the case locally.

Devon & Cornwall have the partners, the willingness and the evidence. Now is the moment to act.

Thank you, Please get in touch

 www.justiceinnovation.org

 info@justiceinnovation.org

 [@cjinnovation](https://twitter.com/cjinnovation)

 [@innovatingjustice.bsky.social](https://bsky.app/profile/innovatingjustice.bsky.social)

 [@centreforjusticeinnovation4290](https://www.youtube.com/channel/UC4290)

 [linkedin/the-centre-for-justice-innovation](https://www.linkedin.com/company/the-centre-for-justice-innovation)

FDAC 
The problem-solving court

 Centre
for
Justice
Innovation

Discussion Questions: **First Contact and Arrest**

- What is working well?
- What needs to improve?
- What actions can we (members of this table discussion) take?
- What actions do we need other people or agencies to take?



First contact: Women's Justice Board says...

- At point of arrest: Decision to divert from prosecution where possible
- Referral into support – through non-arrest/outcome 22/conditional caution/other out of court disposal or deferred prosecution
- Ensure all police forces have gender-specific trauma-informed diversion pathways
- Decision to prosecute *where necessary*, with referral into support
- Expand referrals into NHS Female Liaison & Diversion Pathway
- Strengthen decision making by police & prosecutors on victims of VAWG who are accused of offending

First contact: Lived Experience Group says...

- Introduce a '**passport**' so women don't have to re-tell their story over and re-traumatize
- Children's services / social workers critical role in early support for women/families in contact with the CJS – women afraid to ask for support for fear of children being taken away
- Police trained to understand women's trauma response
- Police improve understanding of domestic abuse so they can identify who is most at risk and avoid arresting the victim
- Reduce the use of strip searching

Wiltshire and Swindon



Female Justice Support Board Wiltshire & Swindon

Preventing Further Harm Conference

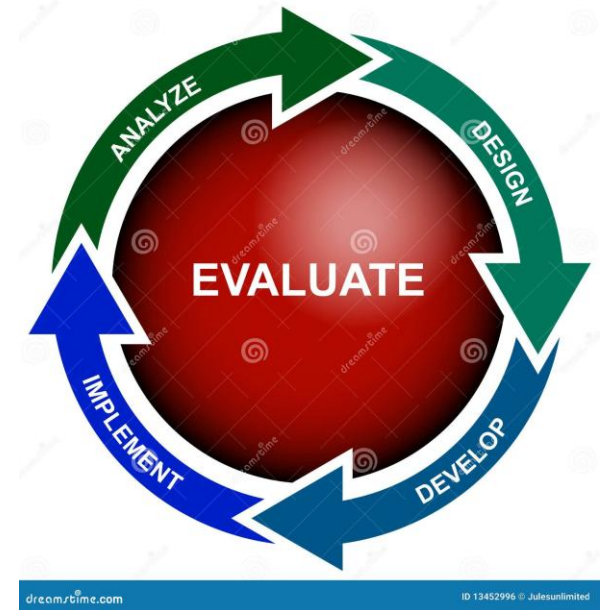
25th March 2026

Caz Deverall-Hart, Strategic Lead for CJ and Reoffending

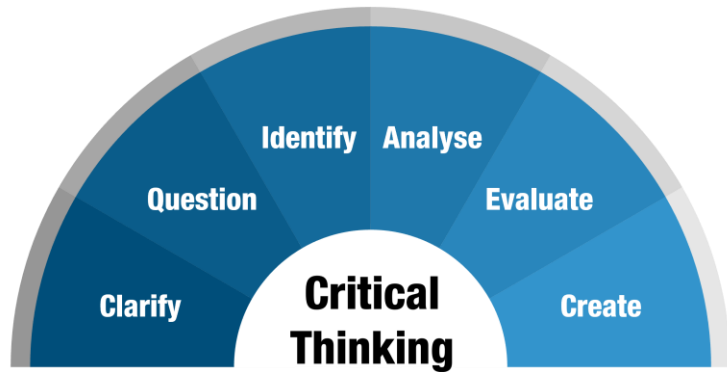


Background

- Independent review commissioned in 2020 by OPCC Wiltshire & Swindon against National Female Offender Strategy (2018)
- Objectives: Profile female offending, understand drivers, map offender journey, identify gaps
- Key Drivers: Finance, Substance misuse, Domestic abuse, Mental health



Female Justice Support Board Development



- Identified need to build a partnership around women in multiple and complex needs in the CJS
- Gather key partners to multiagency Board
- Strengthen partnerships
- Implement review recommendations and focus on identified objectives
- Develop local strategy/delivery plan
- Create data dashboard



Membership

- Wiltshire and Swindon OPCC
- Wiltshire Police
- CPS
- HMCTS
- The Nelson Trust
- Connect (Substance Use Treatment Service)
- CGL (Substance Use Treatment Service)
- Liaison and Diversion Service
- Public Health - Swindon Borough Council
- Public Health - Wiltshire Council
- Accommodation – Swindon Borough Council
- Accommodation – Wiltshire Council
- Probation Service
- AWP – Mental Health
- Wiltshire Youth Justice Service
- Swindon Youth Justice Service
- Private, public and third sector providers of services
- Expert(s) by experience



Female Justice Support Board

Vision

To be an effective partnership, taking responsibility to drive improvements across the criminal justice system for female offenders, to reduce offending and improve, develop and increase the rehabilitation offer and support services for female offenders in Swindon and Wiltshire while being accountable to the Wiltshire Criminal Justice Board.

Purpose

The Female Justice Support Board will provide an opportunity for partners to work together to prevent and reduce offending and provide a more cohesive approach to female offenders and the services delivered, to understand their vulnerabilities and needs through jointly developing and delivering improvements in line with the Government's Female Offender Strategy.





PRIORITIES AND
FOCUS AREAS



PARTNERSHIP AND
COLLABORATION



RESOURCES AND
ENABLERS



RISKS AND BARRIERS



MEASURING SUCCESS
AND ACCOUNTABILITY

Making Wiltshire Safer



Wiltshire and Swindon
pcc

Partnership Board Model

Chair – OPCC (Strategic Lead for CJ and Reoffending)

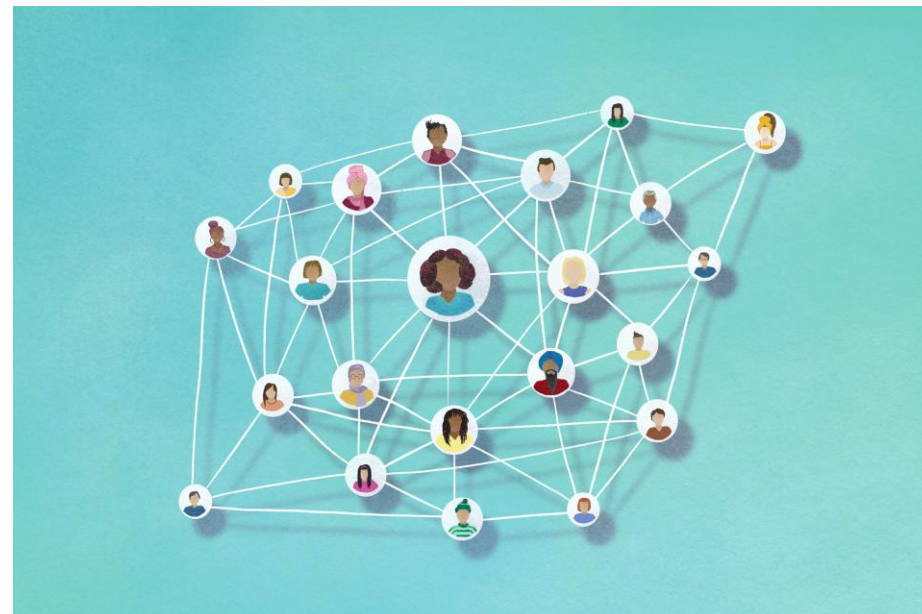
Vice Chair – The Nelson Trust

Quarterly Board meetings

Report/feeding into:

- Wiltshire Criminal Justice Board
- Local Reducing Reoffending Board
- SW Regional Women's Reducing Reoffending Group

Working Groups & Task and Finish Groups as needed



Strategic Aims

- Whole-system approach for women at risk or in CJS
- Reduce women entering CJS through early intervention
- Create safe custodial environments for rehabilitation
- Support reintegration post-release
- Provide targeted support & alternatives to custody
- Women-centred substance use treatment
- Ensure continuity from Youth Justice to adult services



Focus on Whole-System Approach

- Early intervention & prevention
- Divert women from CJS into support services
- Trauma-informed services for women & families
- Work with courts on community solutions
- Train frontline professionals on trauma & vulnerability
- Explore safe local accommodation options
- Clear referral pathways & gender-specific reports
- Effective pre/post-release interventions
- Maintain family links
- Continuous evaluation for improvement



CJ Partnership Day – September 2025

Local conference that brought together key criminal justice partners to reflect on local landscape, shared insights and strengthen collaboration. Exploration of practical innovation, effective pathways and alignment of strategies to support reducing reoffending across Wiltshire and Swindon.

Creative Huddle Feedback:

- Inconsistent sentencing
- Access to services – rurality and locality differences
- Review if services are designed on stereotypes



Improving Early Intervention & Diversion

How the partnership Board approach supports:

- Identifying vulnerabilities earlier through shared data and cross-agency visibility
- Creating gender-specific pathways that divert women before they enter the formal CJS
- Coordinating referrals so women receive timely support for substance use, mental health, domestic abuse, or housing needs
- Strengthening frontline awareness through joint training on trauma, ACEs, and vulnerability
- Reducing barriers so women can engage with services quickly after first contact with police or partners



Early Intervention & Diversion

Examples of Successful Outcomes:

- Increased engagement in women's services post-COVID
- Improved use of Out of Court Resolution pathways
- Commissioning of bespoke OOCR pathways for women
- Enhanced youth-focused support for girls at risk of entering the CJS
- Joined-up mental health, substance misuse, and domestic abuse responses



Early Intervention & Diversion

What next:

- Improve training offer for police officers and probation to ensure staff are engaged in supporting vulnerable women
- Engagement with CPS and HMCTS
- Improve engagement in education settings
- Review IN-CS engagement data for learning
- Focus on police custody



Improving Community Solutions

How the partnership Board approach supports:

- Better-informed court decision making through improved pre-sentence reports
- More consistent, gender-responsive community supervision (e.g., semi-specialist Probation teams)
- Strengthened pathways between women's centres, housing, health, and justice partners
- Supporting community sentence completion
- Ensuring equitable access to services across the county
- Integrated support for girls and young women through work with youth justice and care teams



Improving Community Solutions

Examples of Successful Outcomes:

- Improved quality and use of pre-sentence reports
- Strengthened youth bench engagement
- Clearer understanding of accommodation needs
- Enhanced capacity to deliver effective community sentence requirements (CSTRs)



Improving Community Solutions

What next:

- Partnership support for development of gender specific approaches in Probation
- Continue improvement of pre-sentence reports
- Increase CSTRs
- Engagement with courts – ensuring a cohesive approach for women
- Engagement with sentencers – encourage consistency for women to be on the bench when women are being sentenced
- Ensure continuity of services across Wiltshire and Swindon
- Improve options for appropriate and safe accommodation
- Improvement of mental health provisions



Role of Women's Centres



- Brings specialist expertise - helping partnership understanding
- Influence on strategic decisions, commissioning and priorities
- Service performance, needs and gap analysis
- Co-design of pathways
- Ensures work is trauma-informed and gender-responsive
- Facilitates lived-experience involvement
- Helps to build trust between statutory services and women
- Advocates for community alternatives to custody



Benefits of Partnership Board Approach



- Shared understanding of women's needs
- Better coordination across criminal justice, health, and community services
- Reduced duplication and clearer referral pathways
- Stronger accountability and collective problem-solving
- More consistent trauma-informed practice
- Strengthening system's ability to support women effectively
- Brings together expertise, data and resources
- Creates shared priorities
- Opportunity for lived experience input



Liaison & Diversion Referrals & Engagement

Q1-Q2

- 61% of liaison and diversion referrals are women (above national average)
- Over 90% of women referred engage with support offered
- Integrated trauma-informed model and strong partnership
- Early identification and bespoke pathways

Continuous Improvement

- Deep dive case studies
- Lived experience forum
- Consistent data sharing
- Focus on enhanced gender-informed practice
- Multiagency response to reflect complex needs



Challenges

- Differing organisational priorities and pressures, making alignment difficult
- Data-sharing barriers due to governance rules and incompatible systems
- Inconsistent trauma-informed practice across partners
- Resource constraints and short-term funding for specialist services
- Geographical inequalities in service availability
- Operational pressures reducing engagement from partners
- Fragmentation between adult and children's services
- Difficulty evidencing long-term, cross-system outcomes



Learning

- Establishing and revisiting shared priorities maintains alignment despite pressures
- Clear data-sharing agreements and trust-building improve information flow
- Joint training raises consistency in trauma-informed practice
- Collaborative commissioning strengthens sustainability and reduces fragmentation
- Regular service mapping helps address geographical inequity
- Focused, purposeful governance ensures partner engagement remains high
- Embedding youth justice and children's services prevents gaps during transitions
- Combining quantitative data with lived experience provides a fuller picture of impact



Caz Deverall-Hart

**Strategic Lead, CJ & Reoffending
Wiltshire & Swindon OPCC**

carolyn.deverall-hart@wiltshire.police.uk



Making Wiltshire Safer



Wiltshire and Swindon
pcc



THE
**Women's
Centre**
CORNWALL

How can we offer support that addresses the underlying causes of women's offending?

Jackie May, Chief Executive

Janey Bland, Team Leader

www.womenscentrecornwall.org.uk

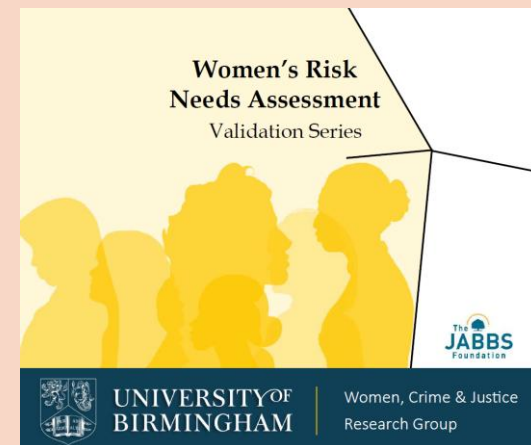


Women's Centre Cornwall

- Started as Rape Crisis Centre in 1996
- 2012 - started working with women on probation on community sentences
- 2021 – Prison Link Workers in Eastwood Park Prison
- 2024 – RISE project for women on probation who are survivors of sexual violence and abuse
- Services include International Women's Group, DIVAs (learning disabilities), ISVAs, domestic abuse, therapeutic support, Young Empowered Women....

What we know about trauma

- New research from University of Birmingham uses Women's Risk Needs Assessment (WRNA), a comprehensive gender-responsive risk, needs and strengths assessment designed specifically to be used with criminal justice involved women.
- WRNA shows that **81% experienced physical or sexual abuse** at some point in their life. **37% of women in the CJS disclosed childhood sexual abuse**, and **38% sexual abuse as an adult**.
- Our own data shows 61% disclose sexual abuse, 84% have post-traumatic stress and 89% depression and anxiety symptoms (Women's Centre Cornwall WRNA data 2024-5).
- This confirms what we have known for years.
- But women in the CJS rarely access traditional sexual violence support (common exclusions include ongoing abuse, substance misuse and sexual/domestic abuse convictions)
- From 'Exploring Needs Profiles in Justice Involved Women'
<https://jabbswomenandgirls.org.uk/resources/exploring-needs-profiles-in-criminal-justice-involved-women/>



What else do we know?

- 18% report their current home is **not** free from violence.
- 67% have a mental health disability, and 22% have a learning disability, neurodivergence or SEND
- 81% have a mental health diagnosis or referral; 80% prescribed emotional medication; 28% been hospitalised
- 57% have attempted suicide
- 51% use substances all or most days, and 51% say substances were linked to their offending
- So: women need holistic support to address all these needs, including support to understand and cope with the impact of trauma

RISE:

Reframe, Inspire, Support, Empower

- 'Trauma stabilisation'
- Work at her pace, based on her individual needs.
- Emphasis on here and now, no expectation for the woman to recount her traumatic experiences.
- Stages:
 - **1. Building trust and safety planning** (domestic abuse, homelessness, self-harm);
 - **2. Psycho-education and skill development** (grounding, anger, shame, understanding brain's natural response to trauma)
 - **3. Endings and celebration** (recap, personal toolkit, celebrate achievements)
- Flexible approach inc. creative activities, nature based, visual tools.

Examples of impact

- Decrease in anxiety and depression (PHQ/GAD) and WRNA risk/needs scores for all women completed so far.
- Report to police of rape after 30 years. She described carrying a sack of rocks on her back: **“The sack is getting lighter, I’m going to keep on working until it is empty and rather than carrying rocks around with me, I’ll walk on those rocks.”**
- A woman challenged a psychiatrist report which made her feel angry, triggered, disempowered and hopeless. With support she wrote a brilliant letter and CMHT apologised and changed the report. She expressed how proud she was of herself, that she is feeling a renewed sense of self and purpose.
- **“I have learnt so much about how the brain protects you from your trauma and that only shards of it come through hence you only have certain triggers at certain times also how your brain is linked to your nervous system, and it can set off feeling physical pain. The way it was explained was so visual and nice and easy to understand... The lady I work with in RISE gave me an anchor charm nothing fancy or expensive just a small charm that I put on a necklace I wear everyday because that to me is my safety anchor and when I feel like I am struggling or my tolerance is rising I just hold it and tell my self I’m in a safe place now and I tell my brain I’m safe and anchored and not in danger. Without RISE I don’t know where I would mentally and emotionally and physically be right now they have helped me blossom and grow.”**

Case study

- Post traumatic growth
- Not just surviving, thriving after extreme adversity
- Evolving with new purpose, perspective, identity and strength



Holding hope for a better system

- RISE is currently available to women on probation in Devon, Dorset and Cornwall, and to any woman who has been recently involved in the CJS in Cornwall
- We hope that women do not have to wait until they get to prison or on a community sentence before they get holistic, gender-specific support to help them cope and thrive after the trauma of sexual and domestic abuse

Discussion Questions: Courts, Sentencing and Probation

- What is working well?
- What needs to improve?
- What actions can we (members of this table discussion) take?
- What actions do we need other people or agencies to take?



Courts/Sentencing: Women's Justice Board says...

- Commission a review of racial disproportionality for women re arrest and sentencing including assault on emergency worker
- Gender informed implementation of the Independent Sentencing Review (IRC) and Independent Review of Criminal Courts (IRCC)
- Women defendants have specialist support in court and defence takes proper account of context
- Defer sentencing or impose Community Orders or Suspended Sentence Orders where possible, with attached support

Courts/sentencing: Lived Experience Group says...

- Someone to explain things clearly in court i.e. what support could be available, what a 'RAR' is! The whole thing is very confusing
- "You're traumatized before you even get to jail. You have no power. It's making you feel even more powerless. You're not allowed to say anything in court anyway. I didn't understand any of it, it was just law-speak."
- Importance of peer support mentors (someone with lived experience who has turned their life around)
- Clear reminder of the key points after court when you can take it in
- Female probation officers rather than male probation officers

Support for Women in the CJS...

Reduction / Prevention and the role of Female Justice Boards.

Amanda Greenwood, Trevi

Lancashire Women example

MAIN AIM

To coordinate and oversee the ongoing development of a Whole System Approach (WSA) to work with women involved with the Criminal Justice system (CJS) across Lancashire.. Improving outcomes for women by...

- Developing a greater understanding and improved profile of the needs of women (recognition of multiple, complex unmet needs).
- To establish and grow clearer pathways for women in contact with the CJS to access services and support to meet their needs appropriately.
- Ensure a collaborative approach between partners in developing a a specific female focussed action plan to address needs (detailing partner activity and outcomes).

Lancashire Women Example

Role / Status / Remit.

- The existence of the group did not seek to replace the duty on any agency to fulfil its legal or contractual obligations.
- The group has no Financial or Budgetary responsibilities.
- The Lancashire Female Justice Board reports to and is accountable to the Lancashire Strategic Reducing Reoffending Board.

The group is jointly chaired and facilitated by Lancashire Women with the Probation Service Women's Lead.

Lancashire Women Example

Core members:

- Accommodation Representative
- Community Safety Partnership Representative
- Domestic Abuse service representative
- DWP
- HMP Styal
- Lancashire Constabulary
- Lancashire Women's Centre – voluntary sector representative
- HMPPS
- Public Health Representatives
- Mental Health Representative.
- Substance Misuse Representative.
- Sentencing Representative (Judiciary/ Magistrates)
- Youth justice system representative
- Violence Reduction Network
- Local Authorities

Lancashire Women Example

Progress to date

1. Regular attendance from 30+ partners
2. Targeted work streams as a result of deep dive work into presentencing reports, recalls, women on remand which surfaced repeating key themes...
Health: DA : Accommodation: Trust (in the Police)
3. Also established a lived experience contact group in Styal Prison
4. Each theme has a woman with LE – and a representative from Lancashire Women.
5. LFJB meetings held in Styal..

Deal breakers / challenges

- A women's justice board HAS to be accountable strategically e.g. to wider Reducing Reoffending Board
- Wide terms of reference – more involvement the better
- Not a learning or viewing option – action focussed and orientated to benefit women
EG. Deep dive on presentencing reports led to magistrate and wider judiciary training
- Needs to be Women's Centre driven – HMPPS support and involvement e.g in Lancs – was HMPPS local women's officer NOW co-chaired with NW Regional Women's Lead
- Alignment with recent Women's Justice Board report recommendations and wider policy CJ agenda

TO NOTE.. Suggestion that there will be regional justice boards

Discussion Questions: Prison, Remand/Bail and Resettlement

- What is working well?
- What needs to improve?
- What actions can we (members of this table discussion) take?
- What actions do we need other people or agencies to take?



Prison: Women's Justice Board says...

- Legislate to remove court powers to imprison women who are pregnant (on remand, sentence, recall and breach) unless mandated by law or imminent risk
 - Introduce a presumption against remand in custody in all but the most serious offences
- Reduce remand and recall for women:
- Learn from remand review at HMP Eastwood Park
 - Learn from Lancashire Women's recall project at HMP Styal

Prison: Lived Experience Group says...

- There should be a secure hostel close to the court to remove the need to travel from Eastwood Park to court during trials
- Need a health assessment by prison healthcare of every woman before travel in vans to court
- Introduce a '**passport**' so women don't have to re-tell their story over and re-traumatize
- Bail hostels need to be safe: There are dealers that wait outside these places because they know women are vulnerable there.

Holding Hope

The Women's Centre Cornwall
Lived Experience Group

Becky Bowie and Isabel Livingstone



Actions and Next Steps

- What actions can I take?
- What actions do I need someone else to take? Who?
- What outstanding questions do I have?

Thank You

for being a part of this conference to improve the lived experience of women in the criminal justice system



Peninsula Women's Alliance



**The JABBS
Foundation**
for women and girls



THE
**Women's
Centre**
CORNWALL