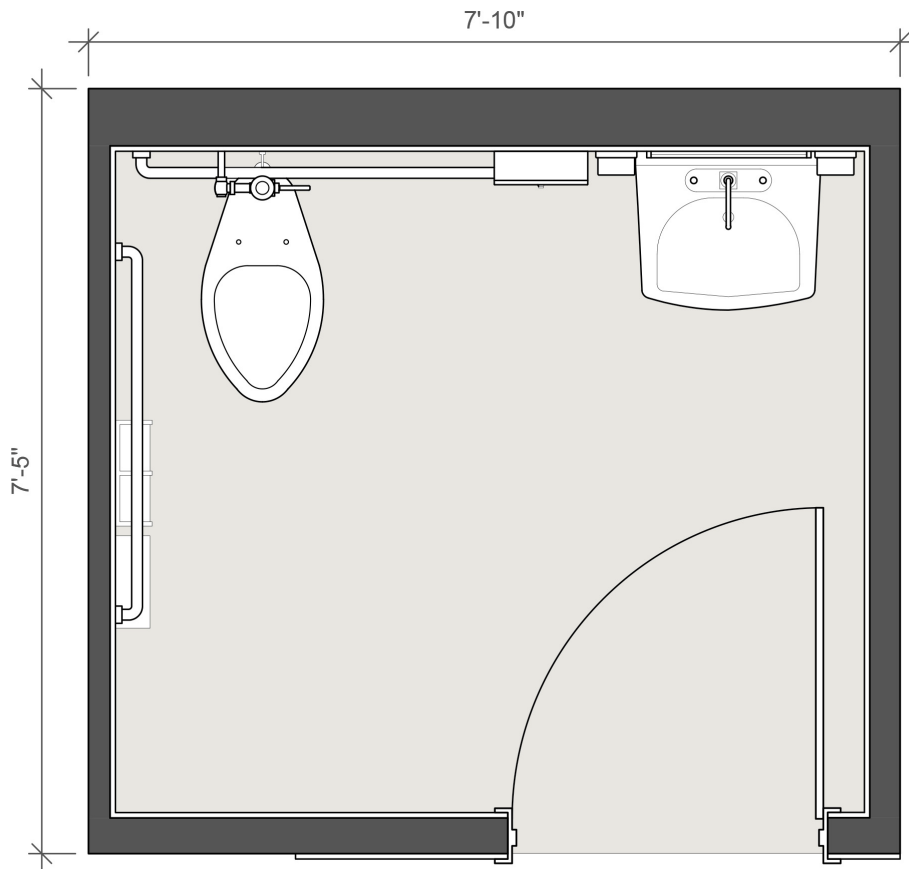


General Purpose Bathroom

SKU.BGP.81

General Purpose Bathroom

BLOX



OVERVIEW

BLOX has delivered over 10,000 healthcare modules nationwide, including thousands of fully integrated, code-compliant bathroom mods. Built using our Design Manufacture Construct (DMC) process, these pre-finished, installation-ready units reduce site work, speed schedules, and improve quality. Designed for patient, staff, and specialty use, they ensure durability, hygiene, and clinical functionality. By standardizing one of the most critical spaces, BLOX helps healthcare providers cut costs, simplify construction, and deliver consistent, high-quality environments faster.

DETAILS

Foot Print: 58 SF

Modules: Individual

Fully equipped

Steel Framed, Modular Construction

FEATURES

Manufactured for quality and consistency

ADA Compliant configurations available

Integrated MEP systems, ready to connect

Impact resistant wall construction

Sprinkler ready

Flexible Configuration options: Inboard, Left/Right, ANSI, Door Location, Accessible, Finish Selections

LEAD TIMES

Lead Time: 60 days

Manufacturing: 10 units/day, ranges by quantity and project size

Installation: 10 units/day can be site-installed, ranges by quantity and project size