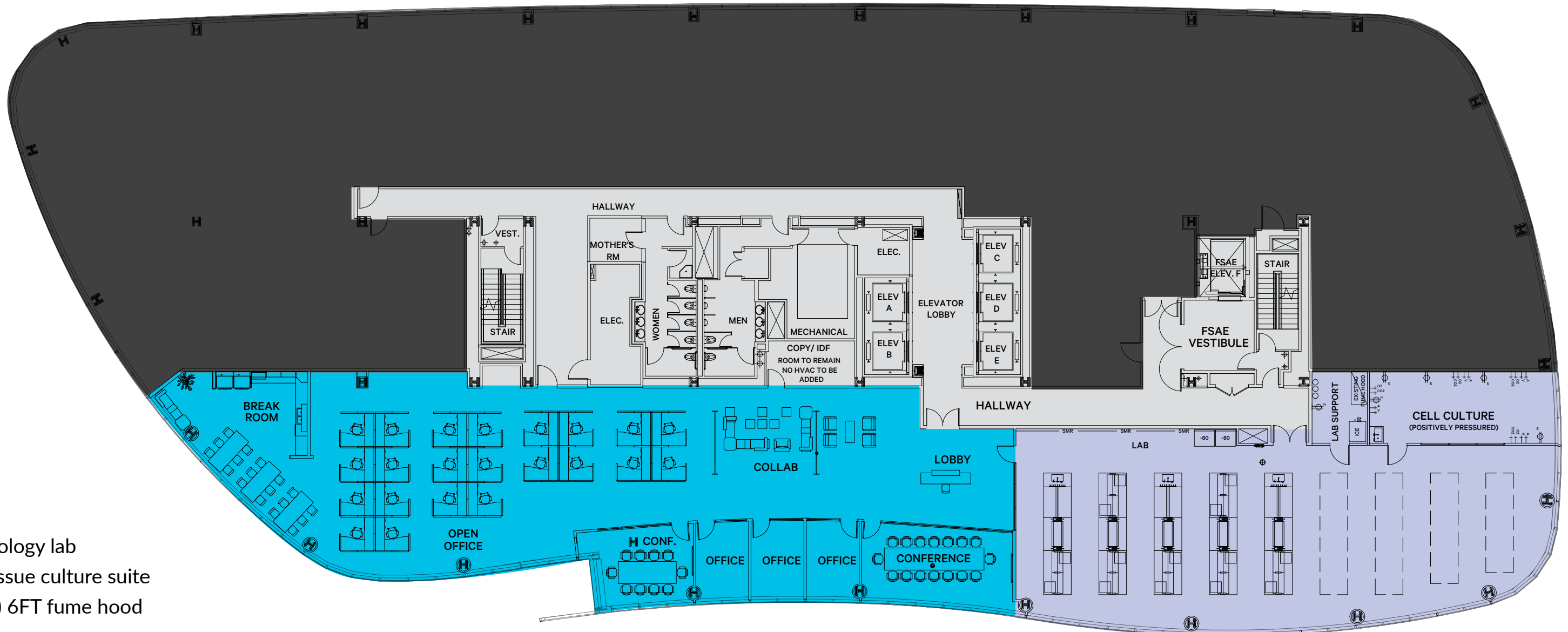


One Tower Place

Conceptual Floor Plan | 7th Floor

±14,674 SF



- Biology lab
- Tissue culture suite
- (1) 6FT fume hood
- House gases
 - Vac & CDA
- Break Room
- (2) Conference rooms
- (3) Private offices
- Open office area

 **OFFICE**
 **LAB & LAB SUPPORT**

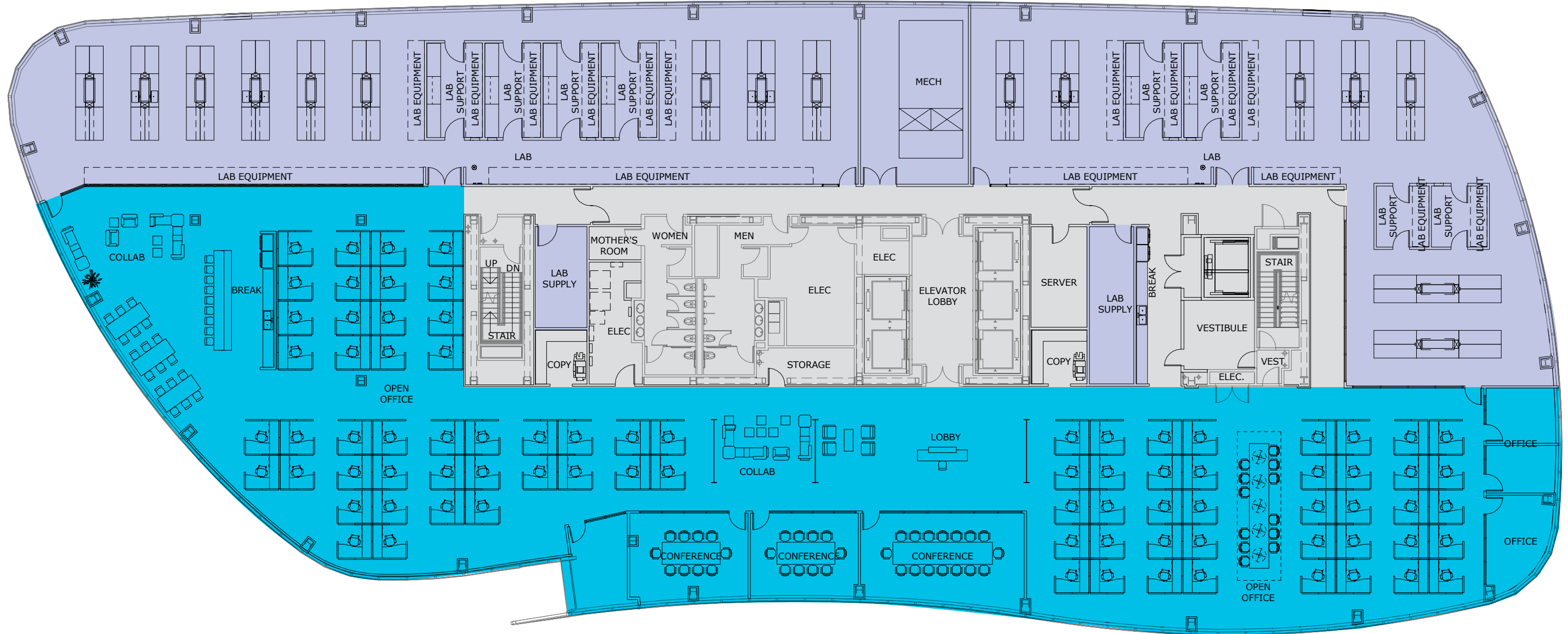
One Tower Place

Conceptual Lab/Office Floor Plan | Floors 9 - 12

±31,500 SF

Existing office area is built-out

Lab portion is in shell and ready to be built-out



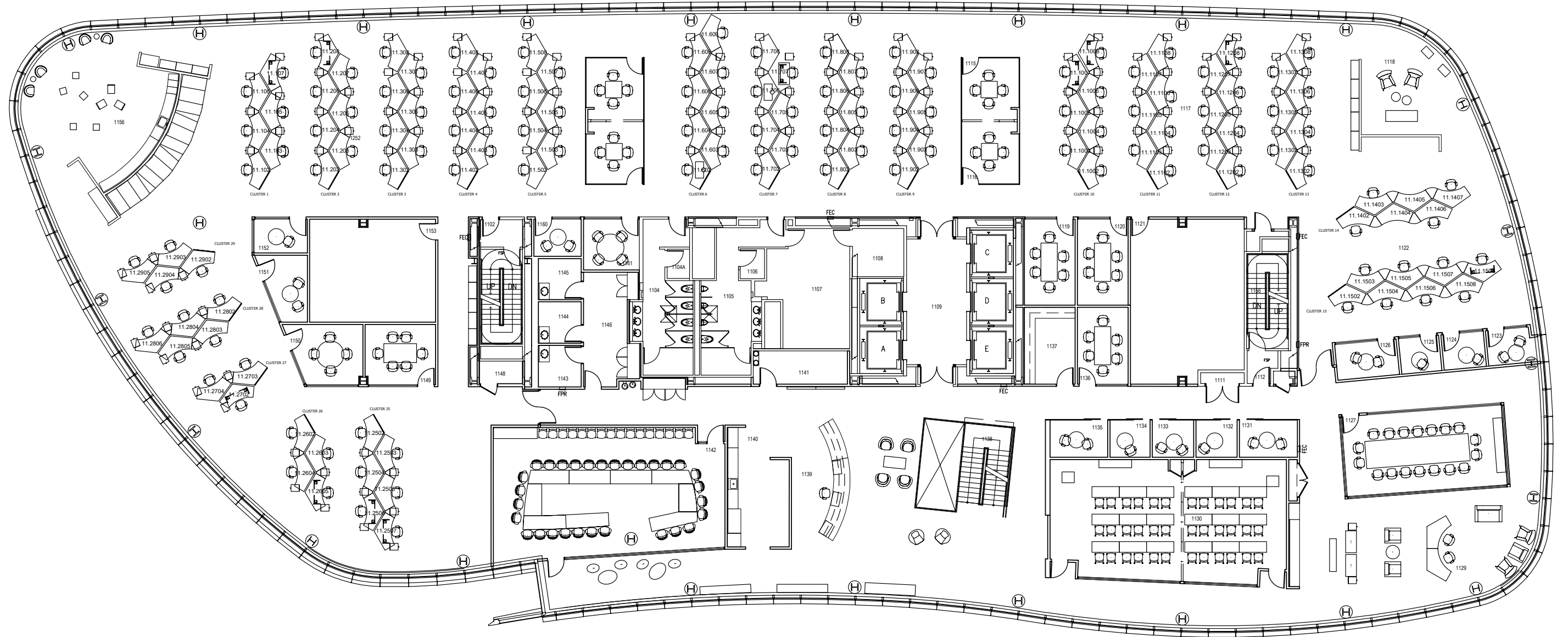
OFFICE
LAB & LAB SUPPORT

One Tower Place

Conceptual Office Floor Plan | Floors 9 - 12

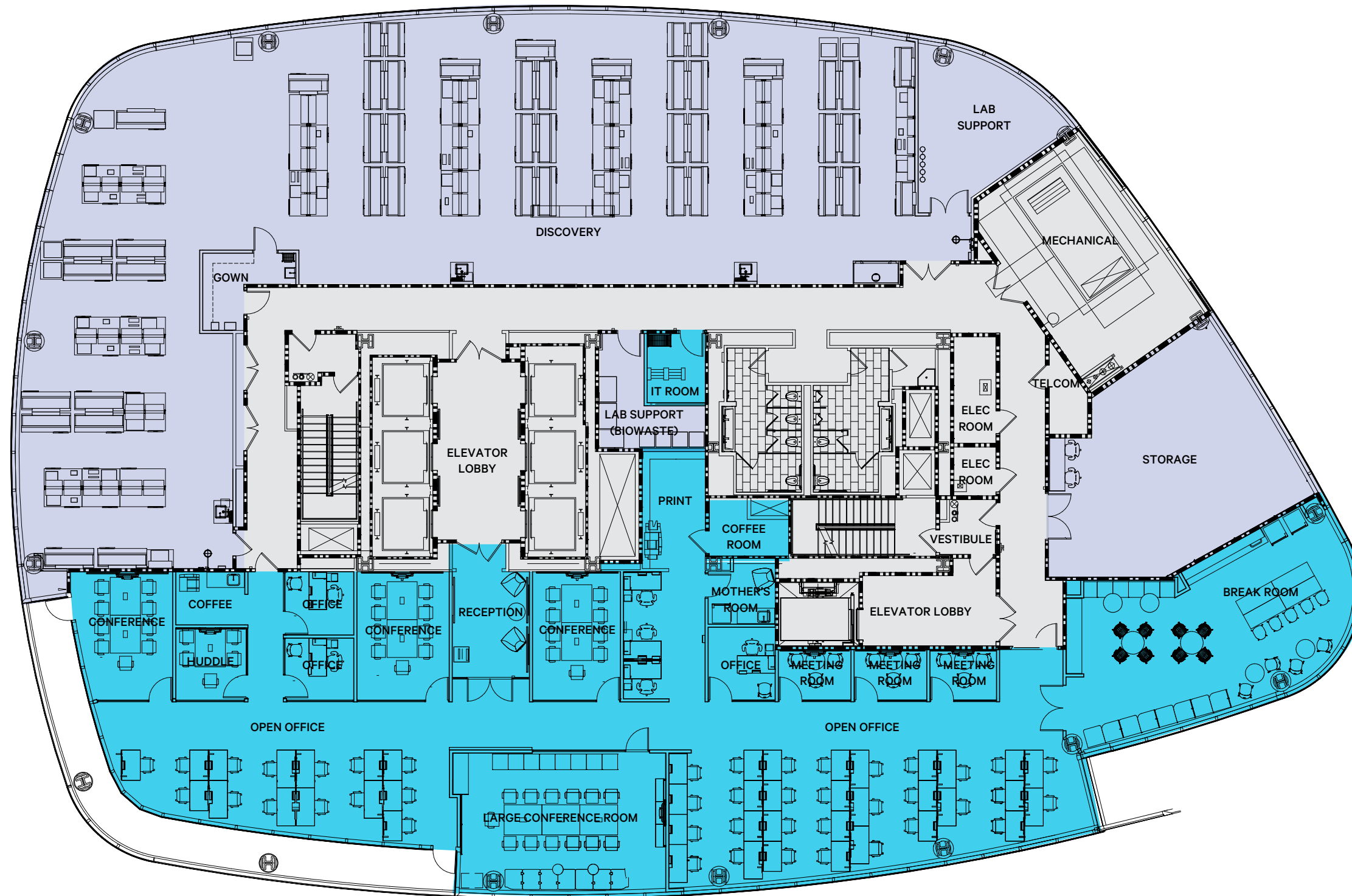
±31,500 SF

50% of office area is built-out



Two Tower Place

4th Floor
±19,608 SF

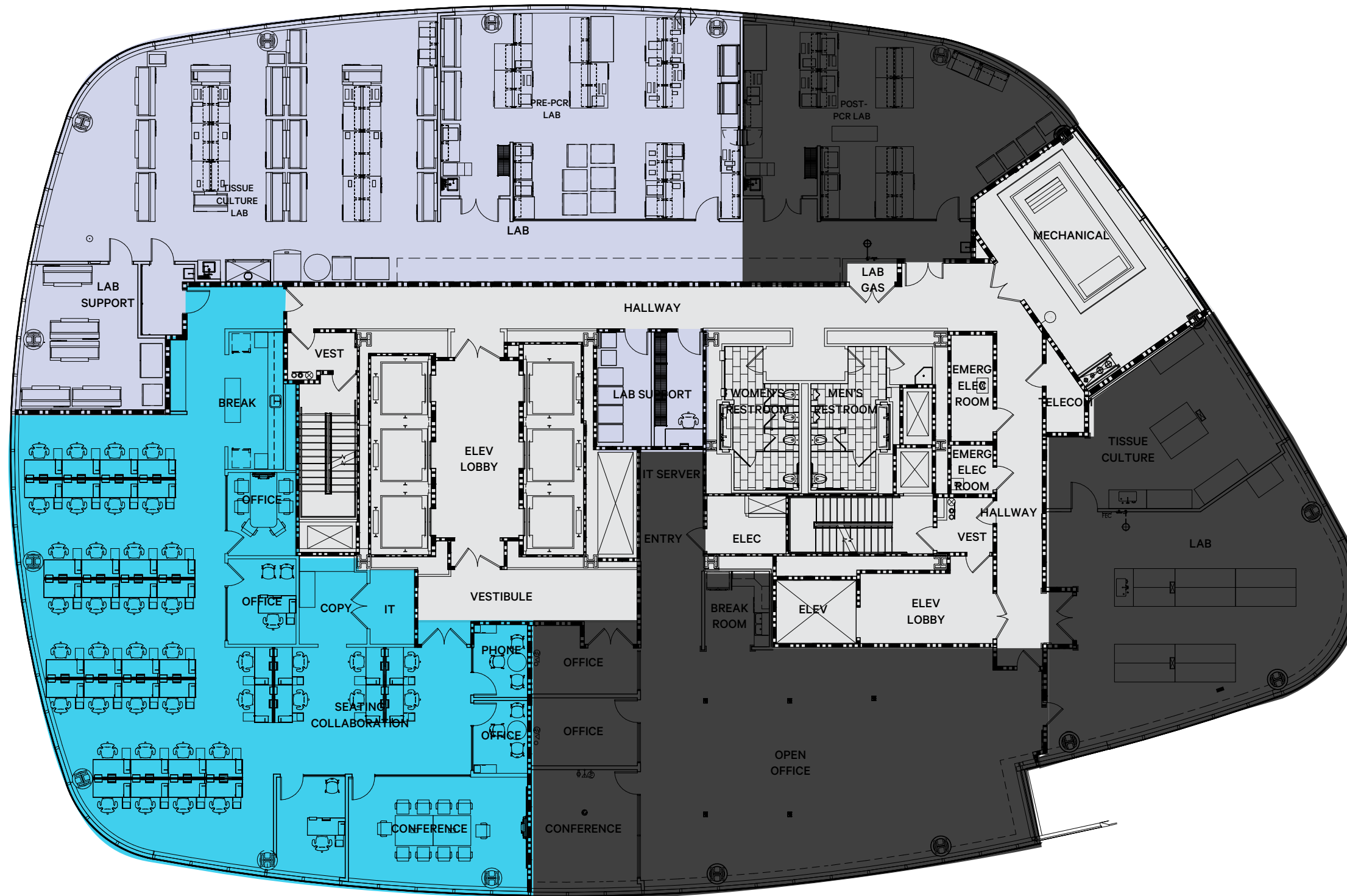


- Biology lab
- Lab support room
- (1) 6FT fume hood
- House gases
 - Vac & CDA
- Cafe/break room
- (4) Conference rooms
- (7) Private offices
- Mother's/wellness room
- IT room

 **OFFICE**
 **LAB & LAB SUPPORT**

Two Tower Place

9th Floor
±11,480 SF



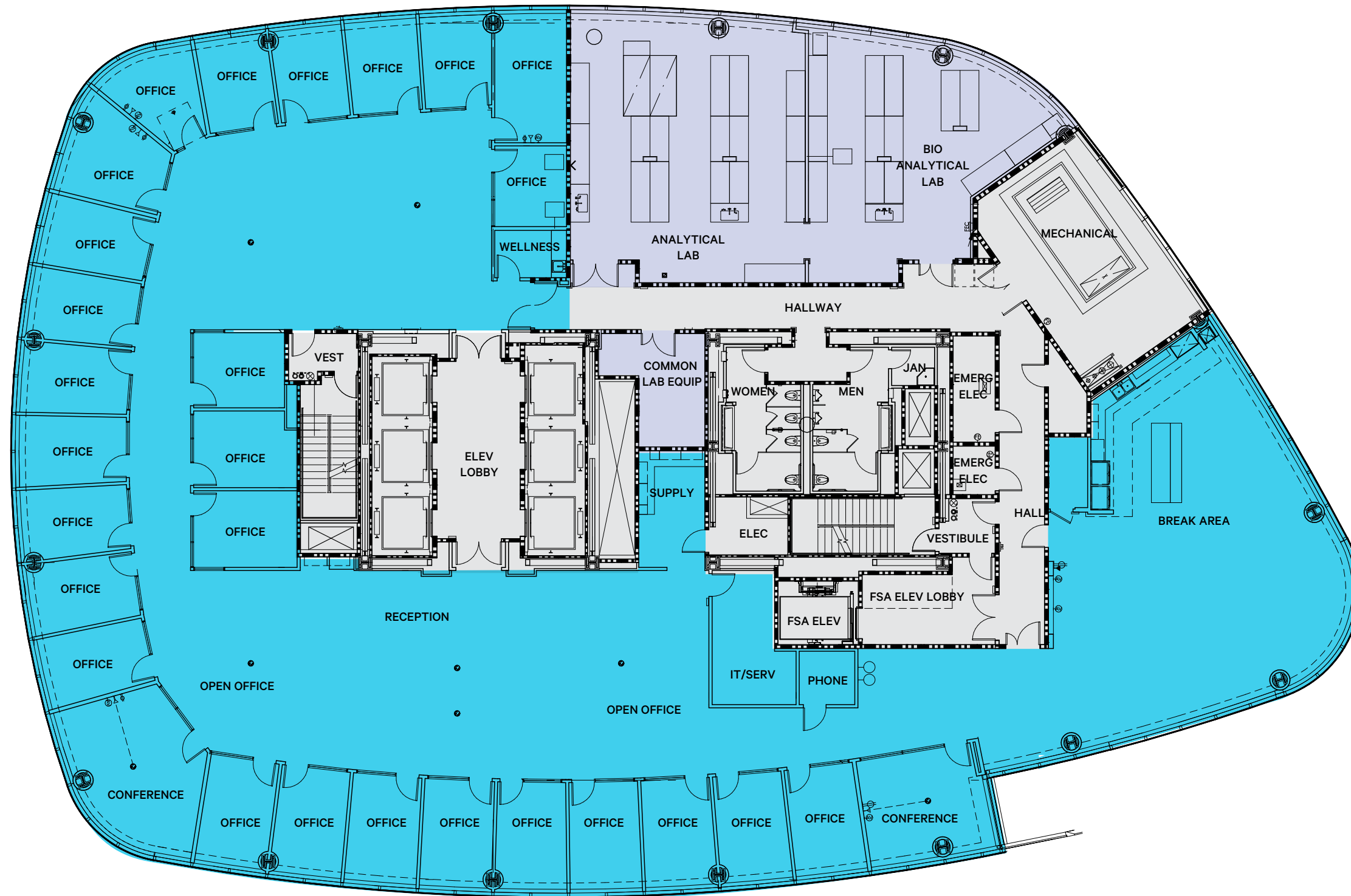
- Biology lab
- Lab support room
- (1) 6FT fume hood
- House gases
 - Vac & CDA
- Cafe/break room
- (1) Conference room
- (3) Private offices
- (2) Phone rooms
- Copy/print area
- IT room

OFFICE
 LAB & LAB SUPPORT

Two Tower Place

12th Floor
±19,861 SF

Available January 2027



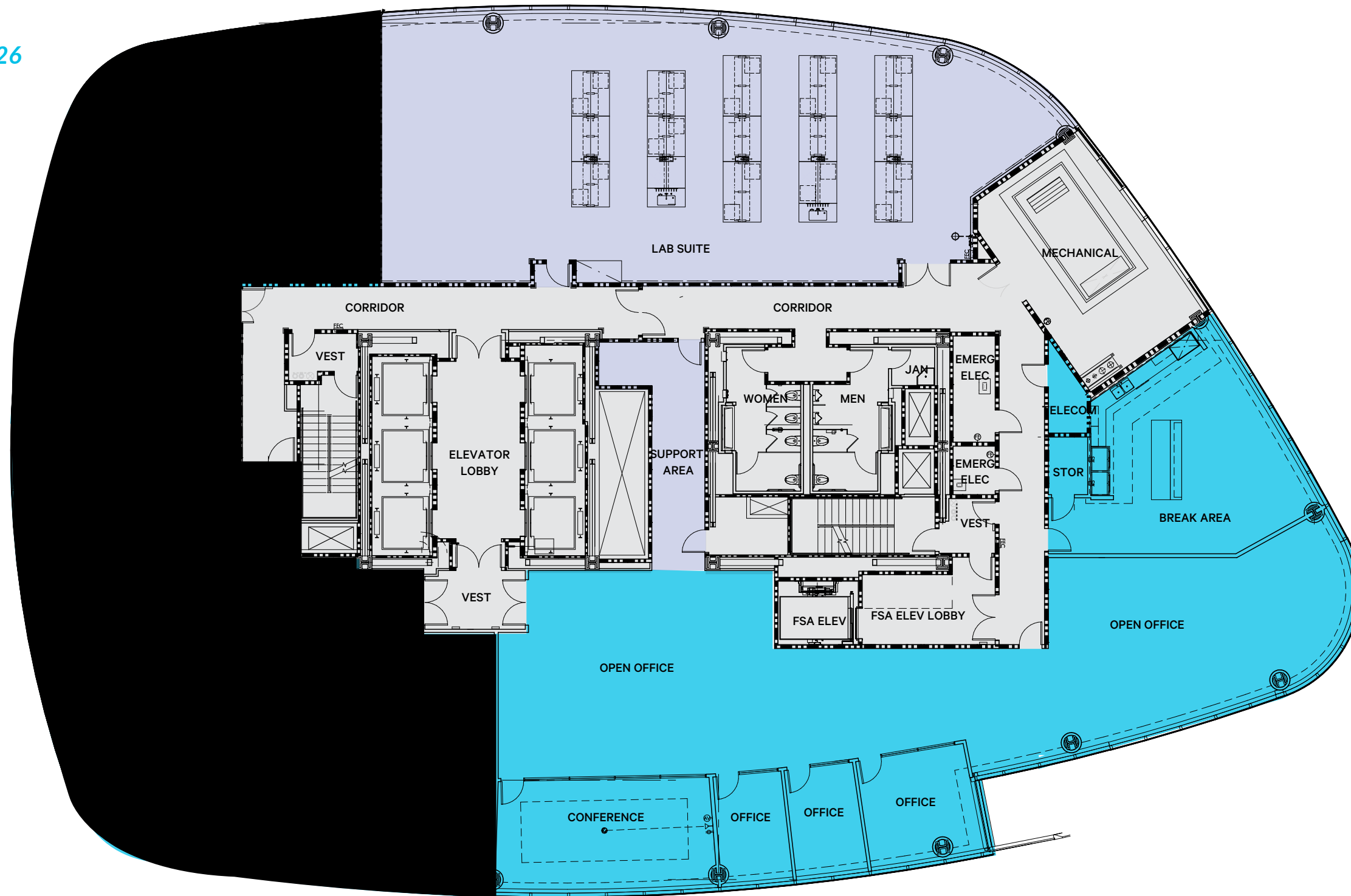
- Biology lab
- (2) 6FT fume hoods
- House gases
 - Vac & CDA
- Cafe/break room
- (2) Conference rooms
- (27) Private offices
- (1) phone room
- Mother's/wellness room
- IT room

 OFFICE
 LAB & LAB SUPPORT

Two Tower Place

13th Floor
±12,555 SF

Available December 2026



- Lab & lab support
- Cafe/Break room
- (1) Conference room
- (3) Private offices
- Open office area

 OFFICE
 LAB & LAB SUPPORT