



Soil Scout Quick Guide - Antennas

This guide explains the antennas included with your Soil Scout kit. For the full manual, please [click here](#).

Your kit contains:



1. Directive antenna 300x200x50mm
2. Mounting kit for the above:
 - 2.1 L-bracket
 - 2.2 U-bolt with washers and nuts, M6
3. Omnidirectional antenna $\varnothing 20 \times 405$ mm
4. Mounting kit for the above:
 - 4.1 Straight bracket
 - 4.2 U-clamp with 4 screws
 - 4.3 2pcs U-bolts, washers, nuts, M8
 - 4.4 "Hand" mount for Omni on receiver back plate
 - 4.5 3pcs M5x10 screws, 3pcs M5 locking nuts
5. 5m and 50cm antenna cables
6. Extension rails for pole mounting



Soil Scout Quick Guide - Antennas

Complement about the **antenna types**:

- **Directional antenna**

This antenna looks like a flag and has a large Soil Scout logo.

It offers the **longest range**, but only in **one direction**, covering about **90° sideways**.

- **Omnidirectional antenna**

This antenna looks like a stick.

It has a **shorter range**, but receives signals **in all directions** around it.

Although they work differently, **both antennas can cover a similar total area**. The most important factor for range is **how high the antenna is installed**.

For detailed range information, please see [our range guide](#).

Mounting options: You can find the detailed tutorials on our dedicated Youtube playlist.

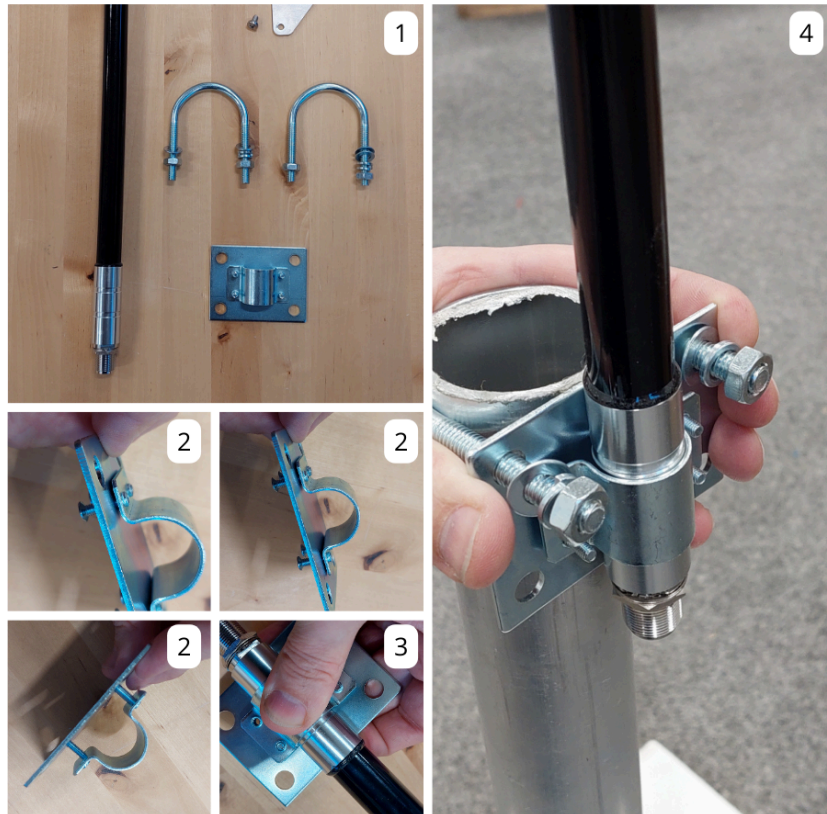




Soil Scout Quick Guide - Antennas

In case you prefer pictures, here are the steps for mounting an OMNI antenna on a pole:

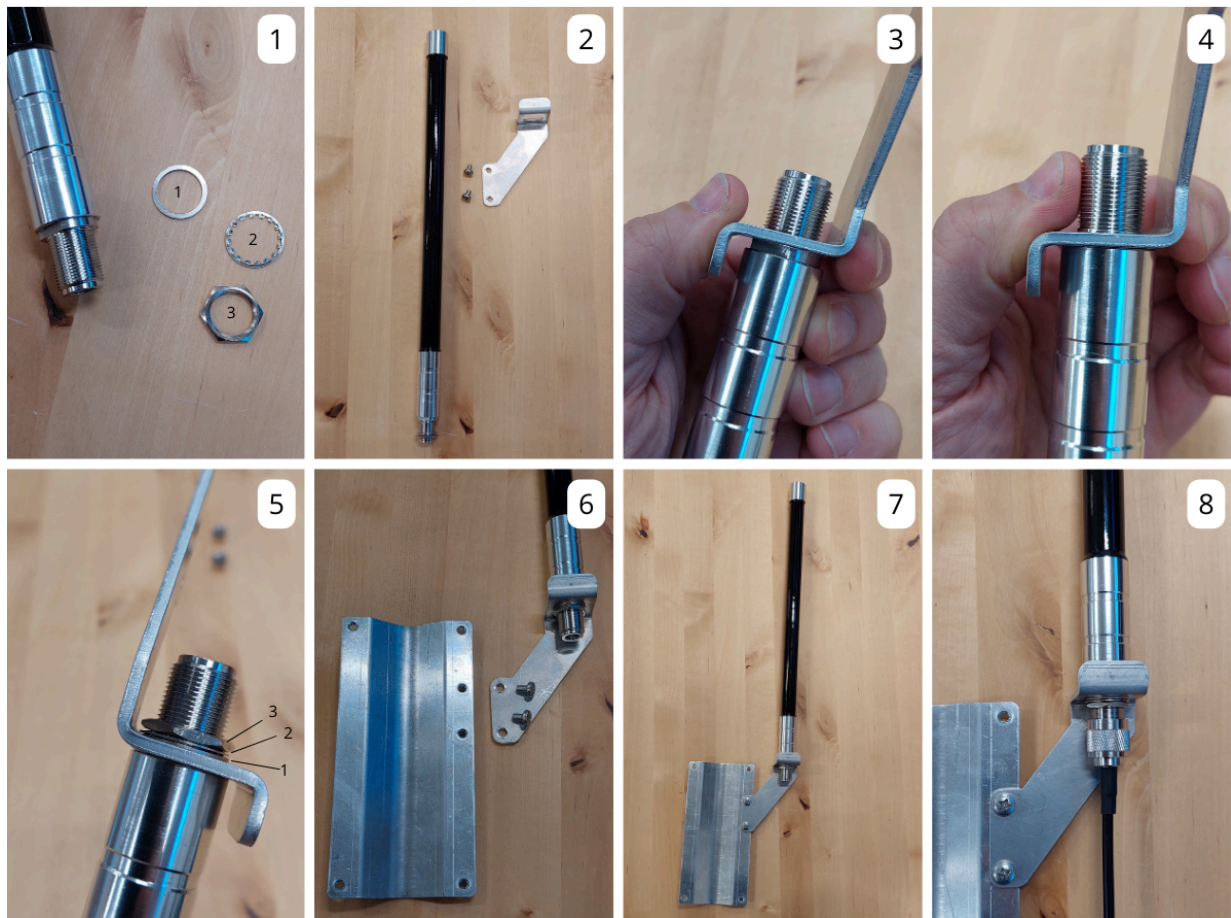
They are designed to fit a **50 mm / 2" pole**.



For the **omnidirectional antenna**, you can also use the **“hand”-shaped mount**. This mount screws directly onto the receiver’s mounting plate, creating a compact and tidy setup.



Soil Scout Quick Guide - Antennas



Extension rails

The kit also includes **400 mm extension rails**. These allow you to mount the receiver and the omni antenna **offset from a larger pole, tree trunk, or other structure**.

They can be attached using zip ties, screws, or large hose clamps, depending on your setup.

This offset gives the omnidirectional antenna more space around it, which **significantly improves signal reception**.



Soil Scout Quick Guide - Antennas

