

1177

Yonge Street suite 108-109



A Sophisticated Retail Opportunity in the heart of Beautiful Summerhill



Yonge Street

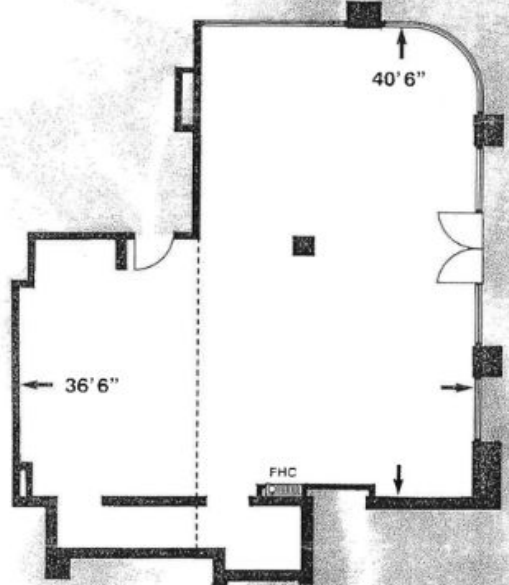
Welcome to The Ports!

A mixed use commercial/ residential condominium located at the South - East corner of Yonge Street and Summerhill Avenue, one block north of the Summerhill Subway Station. With its upscale shops, fine restaurants, open green spaces, and close proximity to the downtown business and entertainment districts, Summerhill is one of the most desirable neighborhoods in Toronto.



1177 Yonge Street

Suite 108-109



1177-Suite 108-109

Total Area: 1305 sq. ft.

Annual Property Tax: \$9,818.41

Annual Maintenance Fees: \$17,485.92

Lease Rate: \$35.00 PSF Net

Estimated total monthly rent:\$6081.53+ hst

Kevin P. Gillen, FRI Broker of Record

K.P.GILLEN & CO REALTY LTD., BROKERAGE

200-40 SCOLLARD STREET

TORONTO, ON M5R 3S1

(416) 964-9441 (OFFICE)

(416) 964-7728 (FAX)

kevin@kpgillen.com