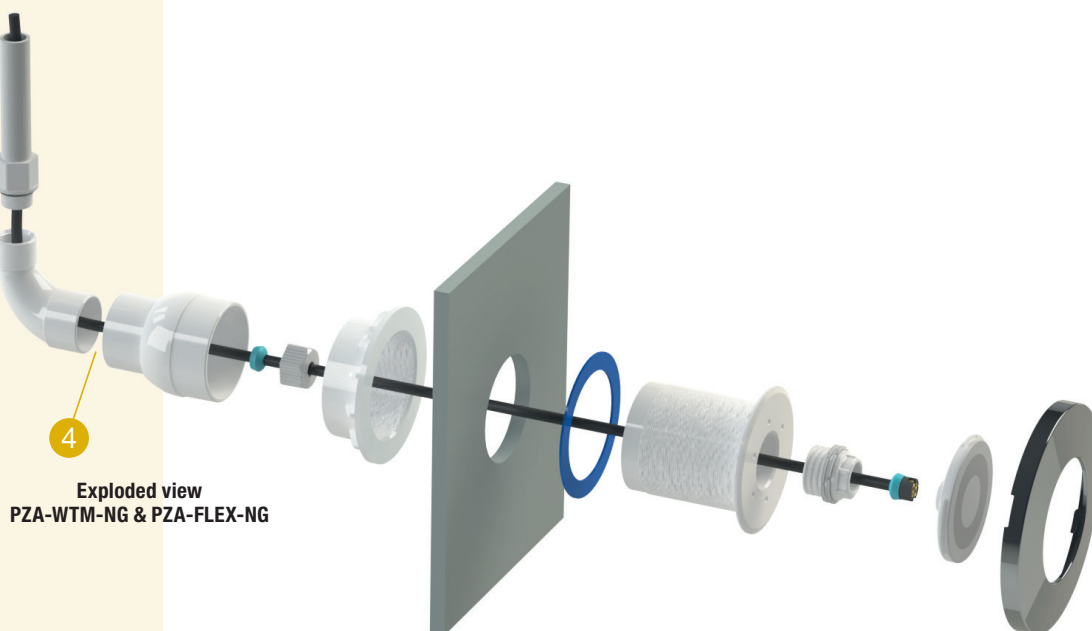
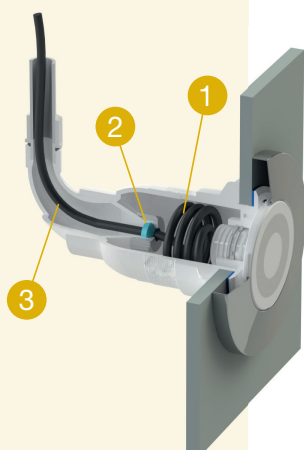


## VISION **Wall Conduits 1,5"**

A WALL CONDUIT FOR ANY TYPE OF POOL WITH OR WITHOUT LINER  
COMPATIBLE WITH ALL DURAVISION LED LIGHTS



Exploded view  
PZA-WTM-NG & PZA-FLEX-NG



Cross-section  
PZA-WTM-NG & PZA-FLEX-NG

Easy **silicone-free** installation.

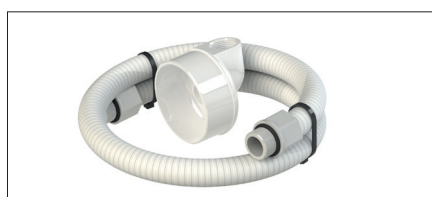
Watertight installation, **no water in flexible hose or pipe.** 2

Up to **1,5m of cable storage**, allowing the light to be lifted above the water surface. 1

**Conical connections**, ensuring a smooth cable passage. 3

Extendable with **50mm tube** and **sleeve.** 4

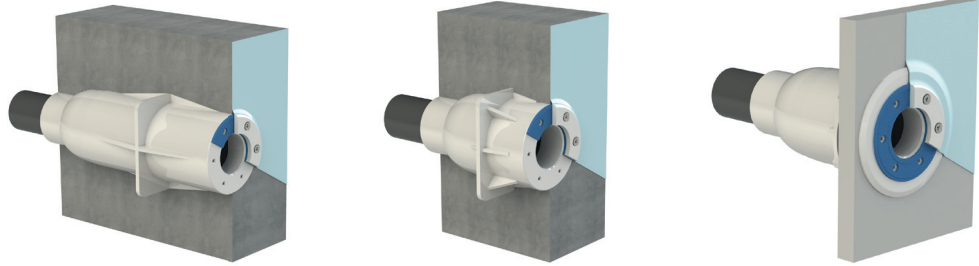
### Option: shorter version



#### PZA-FLEX-S

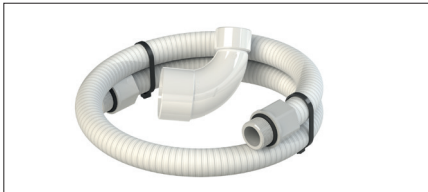
*If limited installation length is required, replace the glue tail piece by the PZA-FLEX-S elbow with flexible hose. Reducing built-in length with 22mm.*

## Technical Specifications



PRODUCT CODE	CONCRETE POOLS		THIN WALL POOLS
	LONG	SHORT	
	PZA-WC-NG	PZA-WCS-NG	
Material	Polymer	Polymer	Polymer
Internal cable gland	✓	✓	✓
Built-in length	mm	mm	mm
Diameter drill hole	mm	mm	mm
Pipe connection	mm	mm	mm

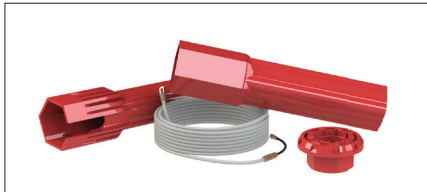
## Accessories



### ELBOW AND PVC HOSE

#### PZA-FLEX-NG

Extension kit with polymer elbow and 800mm PVC hose. Adding the elbow increases the total length of the Wall Conduit by 54mm.



### MOUNTING TOOLSET

#### 513-0151

Installation kit with pull wire and handy multi-purpose installation tool.

## To combine with

LED LIGHTING	FACE PLATES
VISION Spectra DVM p. 10	VISION Face Plates Ultra Flat p. 28
VISION Spectra DVS p. 12	VISION Face Plates p. 32
VISION Adagio Pro p. 14	
VISION Allegro p. 16	
VISION Pro p. 18	