

LINK Touch



Remote control for LED lighting, heat pump and pool cover.

Very stable long range wireless connection.

IP20 housing with modern & sleek design.

Available in **2 versions**, for **RGB** and **TW** lights.

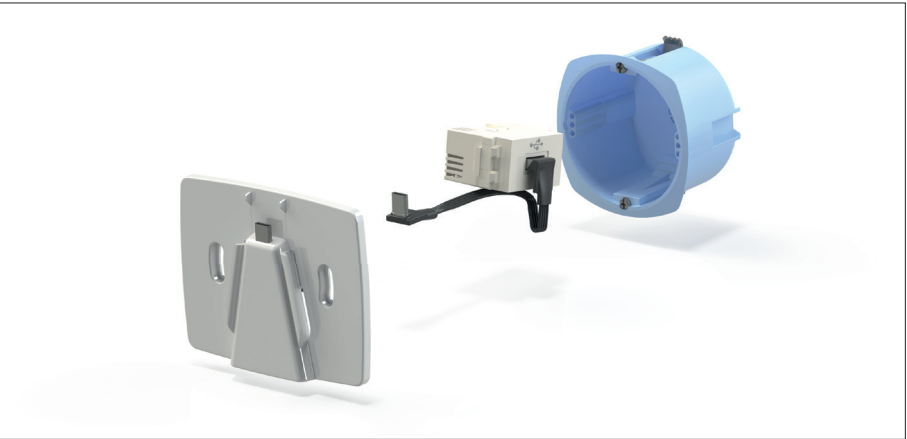
Up to **30 days standby time**, rechargeable via USB port.

Wall bracket and charger included.

Technical Specifications

PRODUCT CODE		DLT10-TW	DLT10-RGB
Type		TW	RGB(W)
Unite dimensions (L*W*H)	mm	186,5*89,5*17,5	186,5*89,5*17,5
Net weight	kg	0,298	0,298
Warranty	year	2	2

Installation tip



DLT10-BIC, an optional flush-mounted socket with USB-C connection. The standard wall bracket can be mounted on the socket.

Operating functions



- | | | |
|---|--|---|
| <p>1 Colour program press for the previous colour program.</p> <p>2 Colour temperature swipe left/right to adjust pool lighting from different tones of white and blue.</p> <p>3 Lights ON/OFF press to switch all lights ON/OFF.</p> <p>4 Colour wheel swipe to adjust the colour of the pool lights (DLT10-RGB only).</p> | <p>5 Dimming level swipe left/right to adjust the brightness of the pool lights.</p> <p>6 Colour program press for the next colour program.</p> <p>7 Pool water temperature press to decrease the desired temperature.</p> <p>8 ON/OFF heat pump press to switch the heat pump ON/OFF.</p> | <p>9 Pool water temperature press to increase the desired temperature.</p> <p>10 Opening the pool cover.</p> <p>11 Closing the pool cover.</p> |
|---|--|---|

To combine with

CONTROL UNIT LED LIGHTING	HEAT PUMP	POOL COVER
LINK One p.78	HEAT DURA+i p. 50	LINK Cover p. 68 in combi with LINK Controller p. 84
LINK Three p. 80	HEAT DURA Pro p. 52	
LINK Controller p. 84	HEAT DURA V p. 54	
LINK Master p. 88		