



RESIDENTIAL PLAN BOOK

# NORTHSTAR



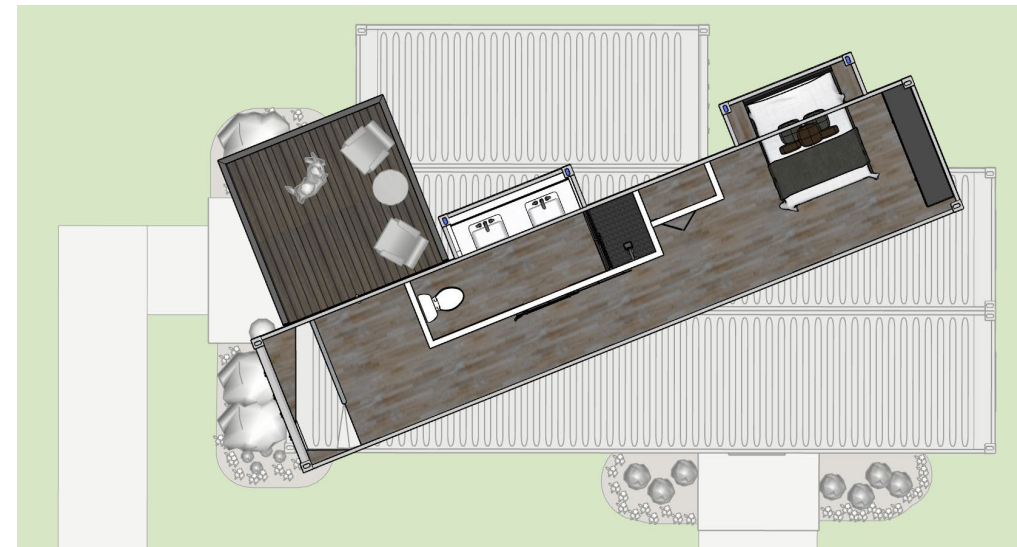
# NORTHSTAR

- 3 BEDROOM, 2 BATHROOM
- (3) 40' CONTAINERS, (1) 20' CONTAINER (OPTIONAL)
- 1,120 SQ. FT.
- 10' x 10' BALCONY (OPTIONAL)



1<sup>ST</sup> FLOOR

2<sup>ND</sup> FLOOR





# BEACH GRASS





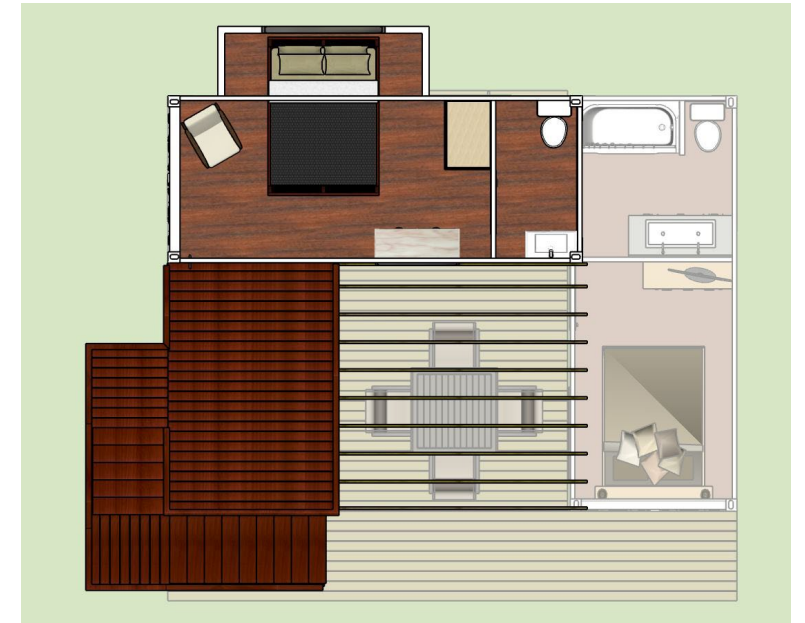
# BEACH GRASS

- 2 BEDROOM, 1.5 BATHROOM
- (3) 20' CONTAINERS W/ FRAMED BUMP OUT
- 510 SQ. FT. + CUSTOMIZABLE OUTDOOR LIVING SPACE
- 8' x 12' BALCONY



1<sup>ST</sup> FLOOR

2<sup>ND</sup> FLOOR





# BEACH BUM





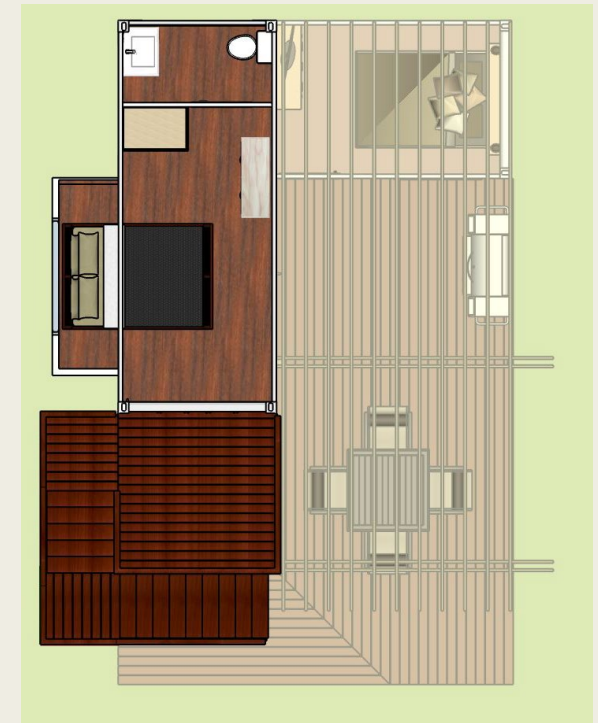
# BEACH BUM

- 2 BEDROOM, 1.5 BATHROOM
- (3) 20' CONTAINERS W/ FRAMED BUMP OUT
- 510 SQ. FT. + CUSTOMIZABLE OUTDOOR LIVING SPACE
- 8' x 8' BALCONY



1<sup>ST</sup> FLOOR

2<sup>ND</sup> FLOOR





# EASTRIDGE



# EASTRIDGE

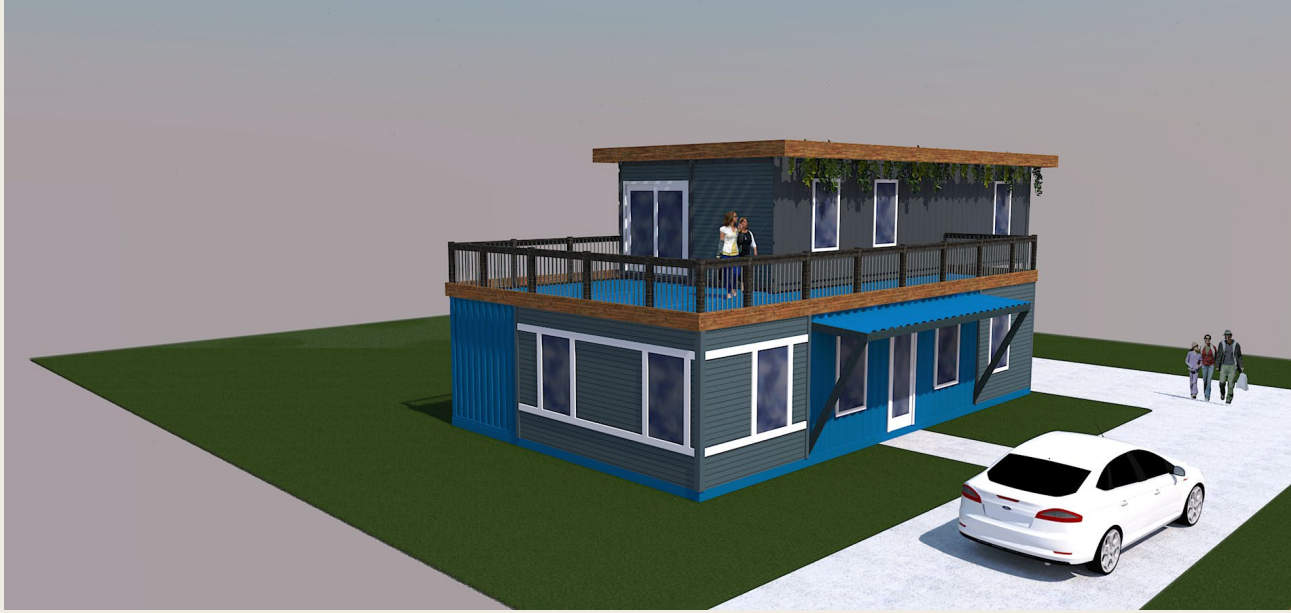
- 4 BEDROOM, 2 BATHROOM
- (2) 40' CONTAINERS, (1) 20' CONTAINER
- 1,420 SQ. FT.
- OPEN LIVING SPACE W/ LARGE WINDOWS

1<sup>ST</sup> FLOOR





# ARTIST HAVEN



# ARTIST HAVEN

- 2 BEDROOM, 2 BATHROOM
- (5) 40' CONTAINERS
- 1,600 SQ. FT.
- COVERED PATIO & OPTIONAL BALCONY



1<sup>ST</sup> FLOOR



2<sup>ND</sup> FLOOR



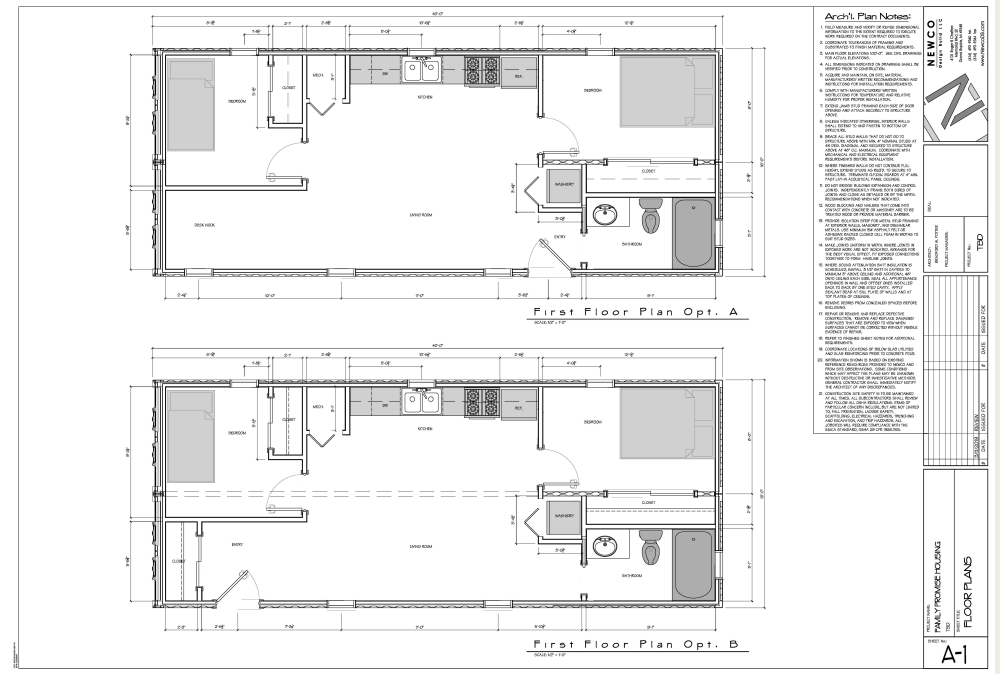
# DUNE GRASS

- 2 BEDROOM, 2 BATHROOM
- (2) 40' CONTAINERS
- (2) 20' CONTAINERS
- 960 SQ. FT.
- COVERED PATIO & OPTIONAL BALCONY



# SUGAR SANDS

- 3 MULTI FAMILY HOMES
- 2 BEDROOM, 1 BATHROOM IN EACH
- (6) 40' CONTAINERS IN TOTAL
- 1,920 SQ. FT.
- COVERED PATIO & OPTIONAL BALCONY





# THE COVE

- 1 BEDROOM, 1 BATHROOM
- (1) 40' CONTAINERS
- 320 SQ. FT.
- COVERED PATIO & OPTIONAL BALCONY

