

Height Increase	21' Long	26' Long	31' Long	36' Long	41' Long
**9'-13'-9"	\$750	\$850	\$1,350	\$1,550	\$1,770
**10'-14'-10"	\$950	\$1,250	\$1,550	\$1,750	\$1,970
**11'-15'-11"	\$1,150	\$1,450	\$1,750	\$1,950	\$2,070
**12'-16'-12"	\$1,350	\$1,650	\$1,950	\$2,050	\$2,270

	12G FRAME UPGRADE	3' BRACE UPGRADE	MOBILE HOME ANCHORS
21' LONG	\$950	\$100	\$200
26' LONG	\$1,000	\$120	\$250
31' LONG	\$1,100	\$140	\$300
36' LONG	\$1,150	\$160	\$350
41' LONG	\$1,200	\$180	\$400

WELDED TRUSSES	
4' Long	\$23.00 Each
5' Long	\$35.00 Each
8' Long	\$65.00 Each
EXTRA BRACES	
2' Long	\$10.00 Each
3' Long	\$15.00 Each
MOBILE HOME ANCHORS	
3/4"X30	\$25.00 Each
ASPHALT ANCHORS	
3/4"X30	\$25.00 Each
WINDOWS White with Grids	
24"X36"	\$160.00 Each

WALK-IN DOOR left Outswing	EXTRA PANELS 36" wide
36"x80" \$300.00 Each Add \$50.00 SIDE FEE Building Must be A MIN. of 7' Tall to Install Door on Side. Residential Door - \$500	21' Long \$110.00 Each 26' Long \$130.00 Each 31' Long \$150.00 Each *36' Long \$170.00 Each *41' Long \$200.00 Each *Not a Continuous Panel.

ROLL UP GARAGE DOORS	
6'x7'	\$625.00
8'x8'	\$750.00
9'x8'	\$775.00
10'x8'	\$875.00
10'x10'	\$1,000.00
*Special Order: Lift required for Installation	
*Note: Doors can be shortened add \$75.00 more	
*Side Door Fee: \$125	
4 EXTRA SUPPORTS	
\$125 Each (x4) = \$500	
RECOMMENDED 10-12' TALL ON CONCRETE OR GROUND	

EXTRA TRIM	EXTRA J TRIM	45' TRIM KIT
\$.95 (Per Ft)	\$.85 (Per Ft)	\$75.00 Each Must Close End or Side First
EXTRA FRAME BOW		
12'-20' Wide \$175.00 Each	22'-24' Wide \$180.00 Each	Add \$10.00 for Each Additional Height
FRAME OUTS	DOOR FRAME OUTS	
Windows \$75.00 Each Walk Door \$75.00 Each	6'w-12'w on End \$100.00 Each 13'w-16'w on End \$300.00 Each 6'w-12'w on Side \$200.00 Each 13'w-16'w on Side \$400.00 Each	On Ends: Must Close First for Frame Outs, If No Panels Wanted on End (Frame End Only) DISCOUNT 20% FROM CLOSED END PRICE

Close Both Sides						Close One End					
Leg Height	21' Long	26' Long	31' Long	36' Long	41' Long	10'-12' Wide	14'-18' Wide	20' Wide	22' Wide	24' Wide	26' Wide
8Ft Tall	\$640	\$735	\$830	\$925	\$1,020	\$805	\$900	\$995	\$1,090	\$1,185	\$1,400
9Ft Tall	\$690	\$795	\$900	\$1,005	\$1,110	\$855	\$960	\$1,065	\$1,170	\$1,275	\$1,475
10Ft Tall	\$740	\$860	\$980	\$1,100	\$1,220	\$905	\$1,025	\$1,145	\$1,265	\$1,385	\$1,550
11Ft Tall	\$790	\$925	\$1,060	\$1,195	\$1,330	\$955	\$1,090	\$1,255	\$1,360	\$1,495	\$1,625
12Ft Tall	\$890	\$1,040	\$1,190	\$1,340	\$1,490	\$1,030	\$1,165	\$1,300	\$1,435	\$1,570	\$1,700
13Ft Tall	\$1,090	\$1,255	\$1,420	\$1,585	\$1,750	\$1,205	\$1,340	\$1,475	\$1,610	\$1,745	\$1,875
14Ft Tall	\$1,190	\$1,370	\$1,550	\$1,730	\$1,910	\$1,280	\$1,415	\$1,550	\$1,685	\$1,820	\$1,950
15Ft Tall	\$1,290	\$1,485	\$1,680	\$1,875	\$2,070	\$1,355	\$1,490	\$1,625	\$1,760	\$1,895	\$2,025
16Ft Tall	\$1,390	\$1,600	\$1,810	\$2,220	\$2,230	\$1,430	\$1,565	\$1,700	\$1,835	\$1,970	\$2,100

Add 60% For Vertical Sides
Add 40% For Vertical Ends

Insulation (Both Sides) Add On:
Multiply leg height by length by 2.
EX: 21' long x 8' tall 8x21 = 168sf x 2 = 336sf x 1.95 = \$655.20 both sides

Insulation (Per End) Add On:
Add 3' to leg height multiply by width
EX: 10' wide x 8' tall 11x10=110sf x 1.95 = \$214.50 per end

***Add \$100.00 Trip Fee on Any Purchase Less than \$500.00**

***Connection Fees Valid Only if you are Purchasing 2 Buildings at the Same Time (Not on Existing Buildings)**

***Connecting End to End \$100.00**
***Connecting Side to Side \$150.00**

Concrete Dimensions

In reference to frame size
Ex: 32'wx20'l building frame size.
Make pad 32'8"w x 20'8"l
the extra 4" all around make it slope away from the building edge to run off water.

Labor Fees	Build over Fee	Cut Legs on Site
20' L	\$200	\$125
25' L	\$250	\$150
30' L	\$300	\$175
35' L	\$350	\$200
40' L	\$400	\$225

Connecting end to end. \$100.00
Connecting side to side. \$150.00

***ROLL UP GARAGE DOORS – Now Available in Colors! and/or Insulated! – *Additional Cost**



Barns, RV Covers, Garages Storage Buildings & Much More!

CALL: 620-364-9126

Email: wolfmetalcarportsinc@gmail.com

BARNs →

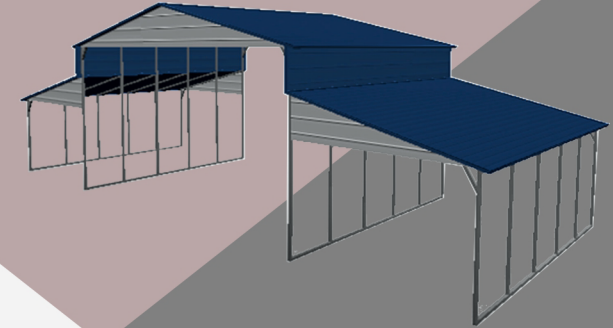
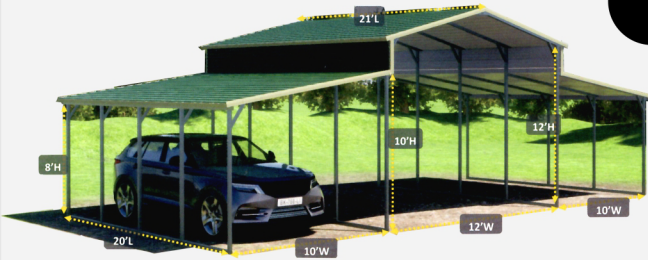
Visit our Website:
wolfmetalcarportsinc.com



*PLEASE NOTE: Color images shown are only representative and not a guarantee of exact color match.

Barns 36' - 50'W

States: AR, OK, MO, NE, IA, KS **NON CERTIFIED**



36X21X12 \$7,181 *VR Add \$1,215	42X21X12 \$7,296 *VR Add \$1,330
36X26X12 \$8,081 *VR Add \$1,445	42X26X12 \$8,196 *VR Add \$1,560
36X31X12 \$8,896 *VR Add \$1,675	42X31X12 \$9,126 *VR Add \$1,790
36X36X12 \$9,744 *VR Add \$1,905	42X36X12 \$10,072 *VR Add \$2,020
36X41X12 \$11,126 *VR Add \$2,135	

44X21X12 \$7,641 *VR Add \$1,330	46X21X12 \$7,986 *VR Add \$1,330
44X26X12 \$8,426 *VR Add \$1,560	46X26X12 \$8,771 *VR Add \$1,560
44X31X12 \$9,356 *VR Add \$1,790	46X31X12 \$9,701 *VR Add \$1,790
44X36X12 \$10,417 *VR Add \$2,020	46X36X12 \$10,762 *VR Add \$2,020

48X21X12 \$9,416 *VR Add \$1,330	50X21X12 \$10,324 *VR Add \$1,445
48X26X12 \$10,316 *VR Add \$1,560	50X26X12 \$11,328 *VR Add \$1,675
48X31X12 \$11,246 *VR Add \$1,790	50X31X12 \$12,661 *VR Add \$1,905
48X36X12 \$12,422 *VR Add \$2,020	50X36X12 \$14,078 *VR Add \$2,135
48X41X12 \$13,936 *VR Add \$2,250	50X41X12 \$15,753 *VR Add \$2,365

INSULATION ADD ON ROOF ONLY: Add 4' to width and multiply by length.
EX. 32' wide x 21' long (36x21 = 756 sf x rate = \$1,474.20)

R Value 14.7 insulation **\$1.95 SF** 95% Reflectivity
Helps reduce building condensation

Standard Features Include:

14 Gauge frame, 12ft & 8ft Std legs, 29 Gauge roofing, maximum rafter/ column spacing 5' on center or less, braces on center rafters and all top corners, 4ft welded peak trusses on center buildings 22'-24' wide, 16ft welded peak truss on center buildings 26' wide. Single leg system for center building height 12' ft tall legs, double leg system for center buildings 13'-16'ft tall legs. Customer must supply lull lift for buildings 13'-16' tall leg height.

***Free Installation on Your Level Lot – "RTO" *Rent to Own**

***Rebar Anchors Included / Concrete Anchors Included**

***Note: Frame Lengths Are 20', 25' and 30', Etc.. Roofs Have No Overhang Front or Back**

***90 Day Workmanship Warranty on all Buildings, effective day of Installation.**

***20 Year Limited Warranty on 12 Gauge framing materials assuming regular care and maintenance given to building.**

***We Strongly Recommend you purchase vertical roofs on buildings 31 ft or longer to prevent leaks.**

Customers Must Supply Lull Lift for Installtions on Buildings Taller than 13ft legs.

"All Prices Subject to Change without Notice"

3% Processing Fee on Credit Cards