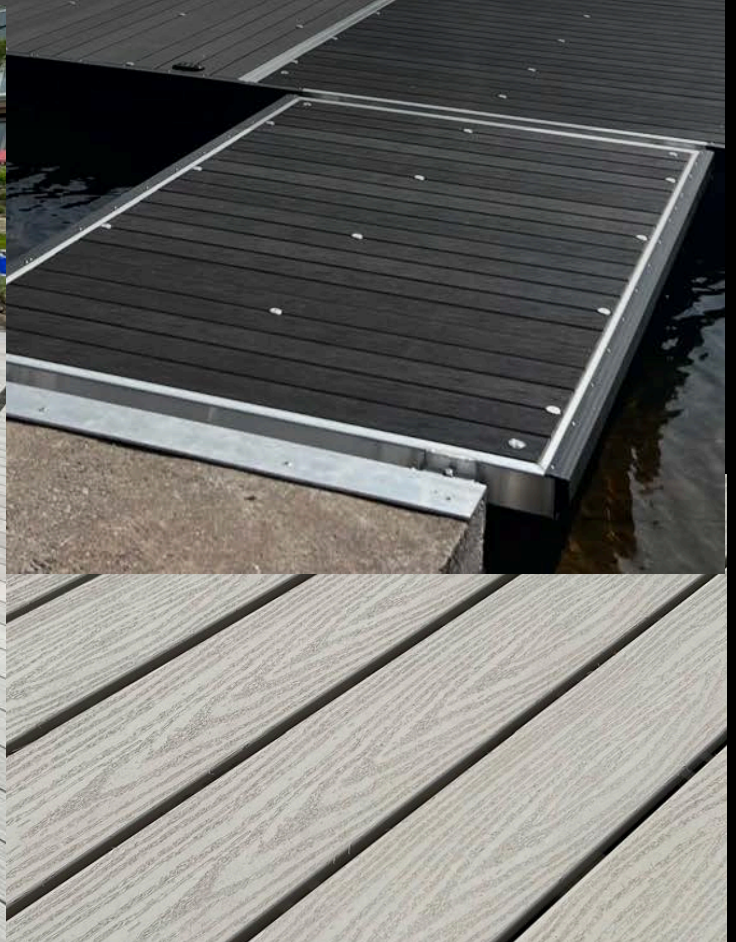
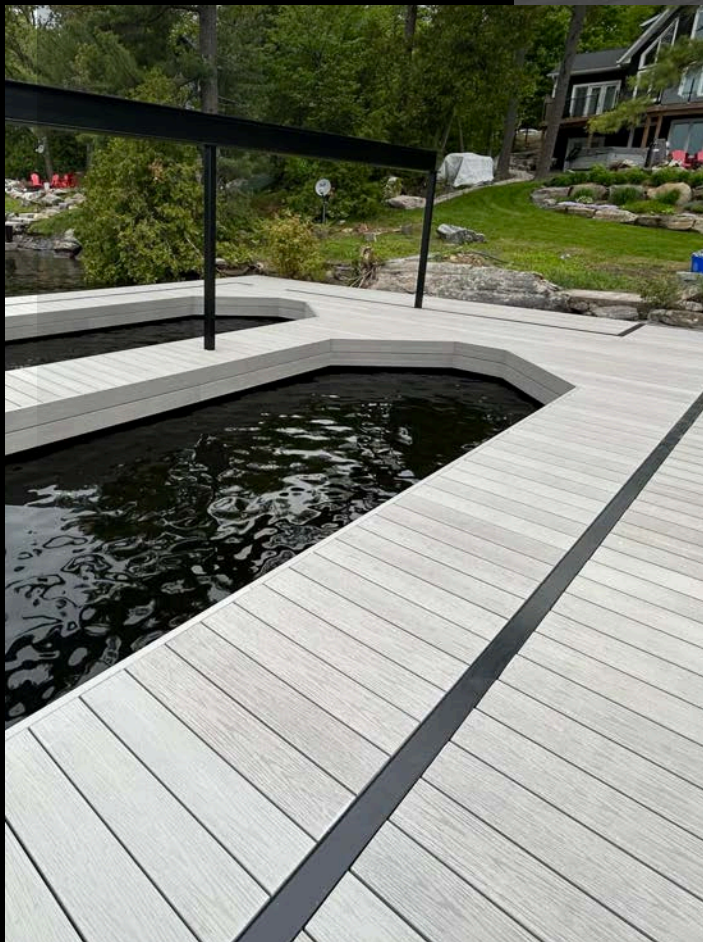




Dockboard

ALL WATERSIDE APPLICATION





2 x 8 Cellular PVC dock board—the perfect answer to all your dockside needs! Embrace your waterfront without the hassle of maintenance, as this innovative product eliminates concerns about rot, fading, and framing. With simple installation and a robust span rating of 28 inches on center, it's an excellent choice for any waterfront application.

Technology

Using the latest co-extrusion technology, cellular PVC core, combined with high polymer ASA material.



Our patented core technology synergistically integrates PVC and aluminum, resulting in a substantial enhancement of its structural integrity.



**SUPERIOR UV
PROTECTION**



**STAIN
RESISTANT**



**SCRATCH
RESISTANT**



**SUITABLE FOR
HARSH CLIMATES**



**RESISTS AGAINST
MOISTURE DAMAGE**



**MOLD AND
MILDEW RESISTANT**

Just Like Wood

likewood.ca