

Exploration tunnel fact sheet: Bushfire risk management

V2.0 September 2025



Southern Cross Gold Consolidated (SXGC) is committed to ensuring the safe and responsible development of the Sunday Creek exploration decline. A key part of this commitment is managing bushfire risk to minimise risk to the local community, environment and infrastructure.

To support this, SXGC has developed a comprehensive bushfire management plan, which identifies potential bushfire hazards, outlines mitigation strategies and establish clear response protocols in the event of a fire.

During our engagement campaign SXGC heard from our community that bushfire risk must be managed. The measures that have been developed in our bushfire management plan, and which are summarised below, directly address and manage these concerns.

Understanding the risk

Bushfires are a recurring hazard in central Victoria, particularly in areas with dense native vegetation and steep terrain. The Clonbinane region is considered high-risk due to its proximity to Mount Disappointment State Forest, a large area of dense forest known for intense fire behaviour. Historical events such as the 2009 Black Saturday bushfires, and the 1998 pine plantation fire along the Hume Freeway, further highlight the area's vulnerability to severe bushfires.

The Sunday Creek project area contains open vegetation, modified pasture and maintained access tracks. These features, along with lower fuel loads and strategic infrastructure placement, help reduce the potential for the site to intensify or spread bushfires.

Although the area remains bushfire-prone, prevailing winds during the fire season typically come from the north, northwest, west and southwest at average speeds of 25 to 27 km/h. These conditions increase the risk of fire entering the site from surrounding high-risk areas.

How will risk be managed?

SXGC has implemented a suite of proactive measures to reduce bushfire risk:

Operational controls

- Bushfire management plan developed and implemented by site management team.
- Hot works permit system regulates spark-generating activities.
- No hot works or surface drilling on total fire ban days.
- Fuel and hazardous materials stored in compliance with Australian standards.
- Daily fire danger ratings are monitored and communicated via daily meetings and signage.
- Annual audits of fuel loads with targets for slashing, mulching or planned burns, aligned to CFA guidelines and bushfire management overlay (BMO) expectations.
- Water sources (e.g., dams or water trucks) will be shared in an emergency.
- Support given for community-led fire planning workshops or joint simulations.

Summary of SXGC Fire Rating Working Restrictions

Fire rating	Site response
Moderate	<ul style="list-style-type: none">• Normal operations with standard fire safety procedures.
High	<ul style="list-style-type: none">• Hot works permit required• Increased vigilance.• Emergency contact systems active.
Extreme	TOTAL FIRE BAN <ul style="list-style-type: none">• Only essential surface work permitted.• Underground activity can continue.• Non-essential personnel evacuated.
Catastrophic	TOTAL FIRE BAN <ul style="list-style-type: none">• Site closed except for emergency work .• Early evacuation advised.

Questions or comments? Get in touch:

p. 1800 717 638 | e. community@southerncrossgold.com.au

For more information visit www.southerncrossgoldcommunity.com.au

Infrastructure design

- Workshops and fuel storage are located away from dense vegetation.
- Buildings and equipment are fitted with fire suppression systems.
- Internal access tracks are maintained for emergency vehicle access.

Firefighting resources

- Water sources (dams and tanks) are located at Clonbinane Park, with CFA-designated tanks near Clonbinane Road. Dams are also dotted throughout the site but may not hold water year-round.
- Tanks are fitted with CFA-compliant quick fill fittings.
- Firefighting equipment is regularly tested and maintained.

Personnel preparedness

- Emergency management plan includes procedures for responding to fire.
- Site inductions include bushfire awareness and emergency procedures.

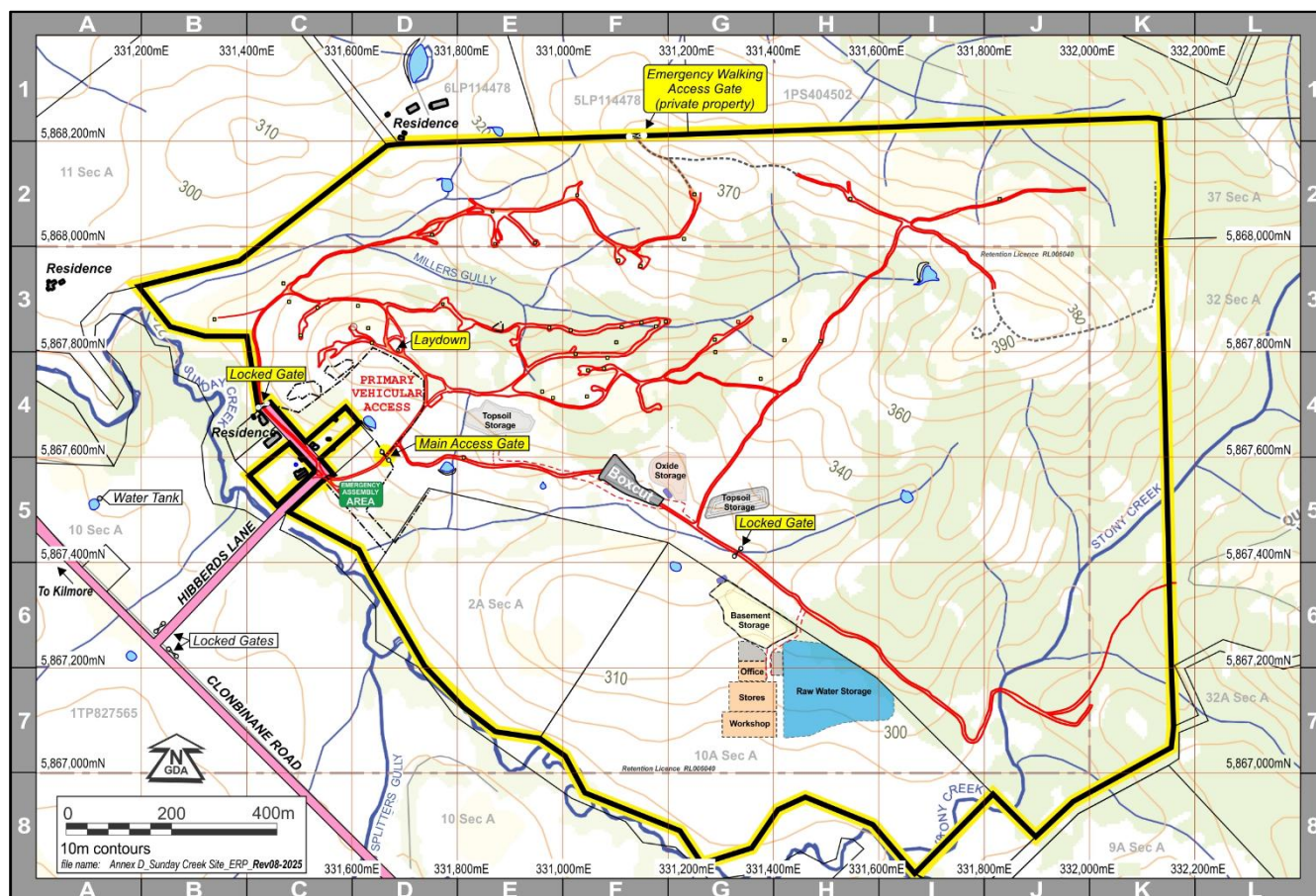
- All personnel must use the VicEmergency app and monitor ABC Melbourne 774 AM.
- UHF 14 is used by CFA for emergency comms.
- Annual CFA site familiarisation is conducted.

Monitoring and review

Bushfire risk management at Sunday Creek is an ongoing priority for SXGC, not a one-time consideration. To ensure continuous improvement and preparedness, SXGC actively:

- Conducts monthly site audits and pre-season inspections to assess fire readiness and identify emerging risks.
- Facilitates annual site familiarisation sessions with CFA crews to support coordinated emergency response.
- Updates the bushfire management plan at every major project phase and/or every three years.

SXGC values community input. Feedback on bushfire safety and management is welcomed through the details at the bottom of this fact sheet.



Emergency management plan: Site layout and emergency features map

Questions or comments? Get in touch:

p. 1800 717 638 | e. community@southerncrossgold.com.au

For more information visit www.southerncrossgoldcommunity.com.au