

# Exploration tunnel fact sheet: Surface water storage facilities



## Why we need water storages

Southern Cross Gold (SXGC) will build a small number of surface water storage facilities to safely manage surface and ground water during the construction and early operation of the exploration tunnel. The storages have been approved in the exploration work plan and enable SXGC to operate responsibly, protect the environment and use our water resources sustainably.

## How many storages will be built?

The tunnel's work plan allows for up to four storages to be built. Construction will be staged and further water-balance modelling will help confirm the order in which we construct them.

## Design and construction

Each storage will be built using onsite earthen materials to construct the dam wall, much like a typical farm dam. They will have an embankment no higher than 5m, and hold up to 50 megalitres each.

To protect the landscape, soil and groundwater, all storages will be lined with a high density poly ethylene (HDPE) membrane. Water will be transferred between the dams via overland pipe.

## Environmental and wildlife protection

Before choosing locations, SXGC undertook ecological surveys to avoid native flora and fauna and ensure the designs fit respectfully into the landscape. Storages will be constructed with a ramped egress point to reduce the risk of wildlife entrapment.

The storages will hold natural ground and surface water that is safe for humans and animals. Construction of the tunnel will not introduce any chemicals or contaminants to the water system.

Water quality has been thoroughly assessed. These studies show the water will be safe for wildlife, and the layout ensures animals can continue to move freely around the area.

## How will excess water be managed

The dams have been sized to store the peak water balance requirements.

Construction of the tunnel will generate more water than SXGC will be able to recycle and reuse in the first year of development and exploration drilling.

The water quality has been assessed as suitable for short term irrigation and SXGC intends to irrigate pasture on SXGC-owned freehold land inline with the farming zone nominated in the planning scheme.

## Approvals and compliance

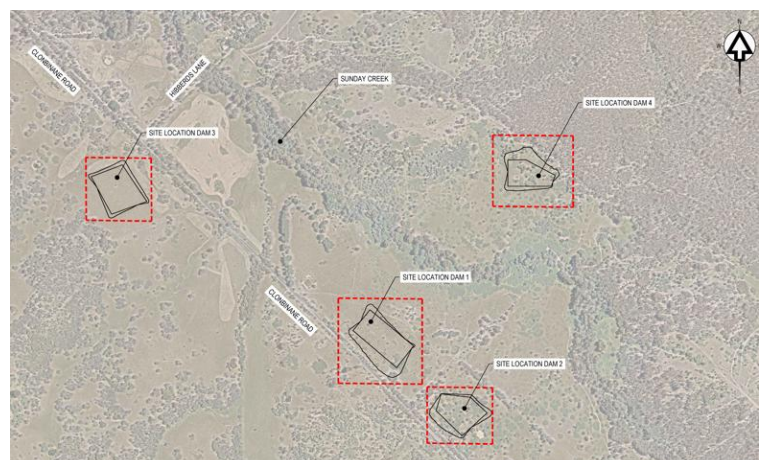
SXGC is currently obtaining the required consents to support the installation of infrastructure and management of water during project construction and operation.

## Our commitment to the community

SXGC is committed to:

- ▶ responsible water management
- ▶ protecting local ecosystems and wildlife
- ▶ keeping neighbours informed as the project progresses
- ▶ rehabilitating areas no longer required for operations

If you have questions or would like to discuss the project, please contact us on the details below.



*Location of dams on the exploration tunnel site*

## Questions or comments? Get in touch

p. 1800 717 638 | e. [community@southerncrossgold.com.au](mailto:community@southerncrossgold.com.au)

For more information visit [www.southerncrossgoldcommunity.com.au](http://www.southerncrossgoldcommunity.com.au)