

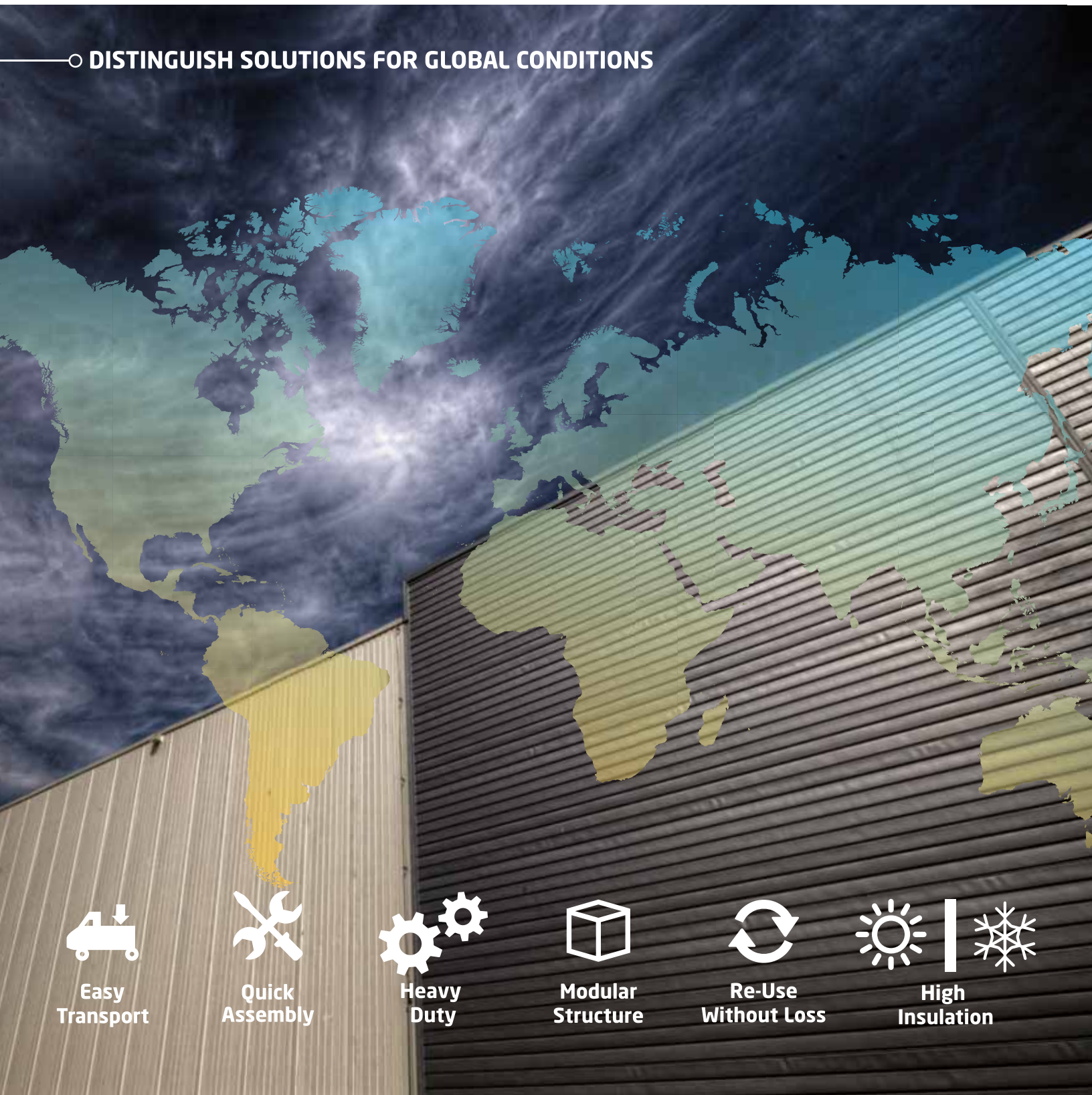


CORPORATE
GUIDE

IDENTICAL ENGINEERING FOR TAILOR MADE SOLUTIONS

EPC • Mobilization • Modular Buildings • Steel Buildings • Demountable Containers • Housing

○ DISTINGUISH SOLUTIONS FOR GLOBAL CONDITIONS



Easy
Transport



Quick
Assembly



Heavy
Duty



Modular
Structure

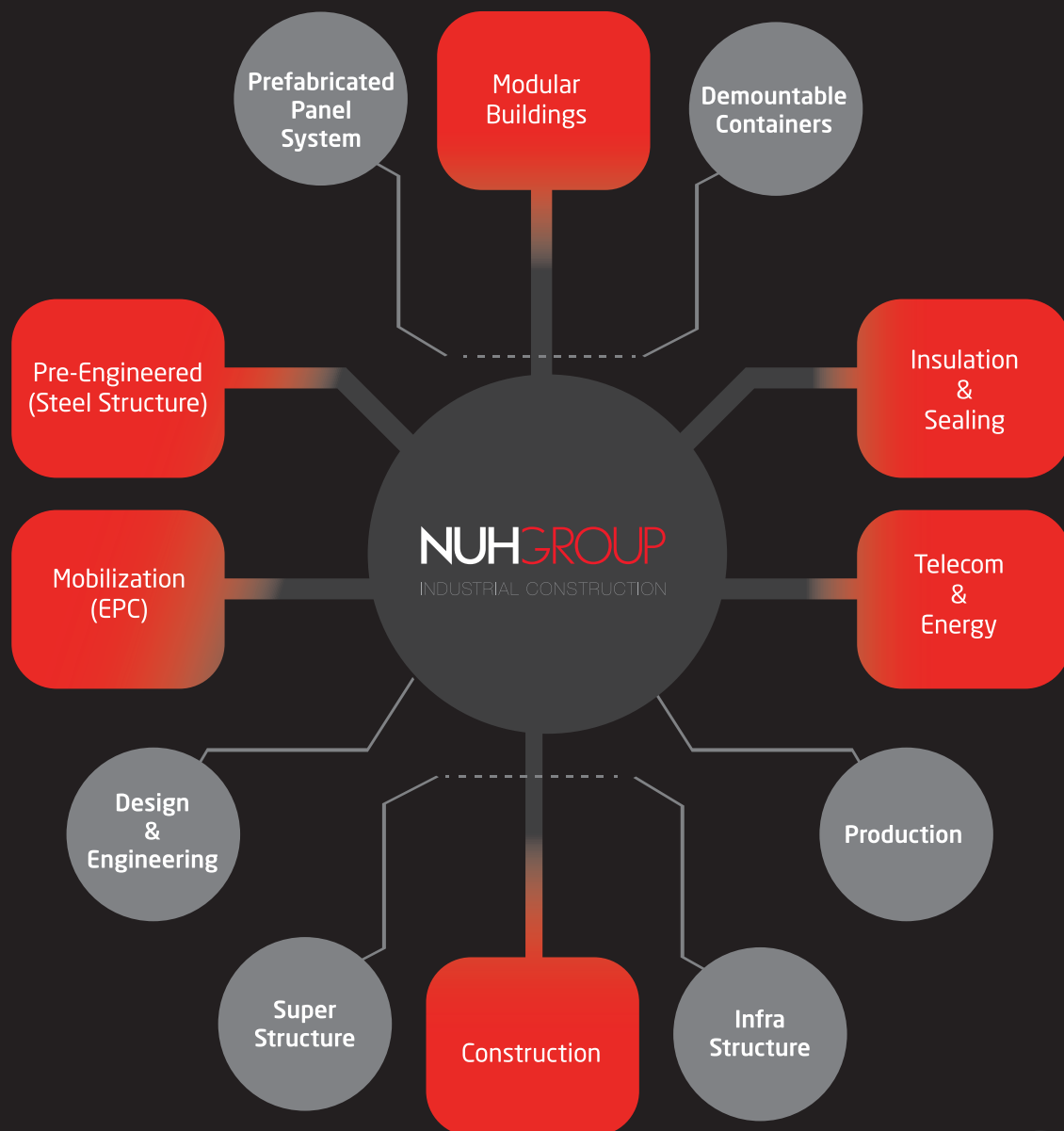


Re-Use
Without Loss



High
Insulation

○ FIELD OF ACTIVITIES



VISION
2020

ABOUT US

IDENTICAL ENGINEERING FOR TAILOR MADE SOLUTIONS

10%
R&D
BUDGET
12
PATENTS

From the first day of its establishment, Nuhpanel has adopted the principles of creating values as its most important responsibility to our industry. These values are mainly shaped up around intangible assets as human capital and innovation. Our aim is to become a competent and responsible solution partner to our customers and serve as integrated systems provider with an understanding of beyond quality requirements and environmental sensitivity with over 500 skilled full employees in production and installation.

We take pride in our reputation for expertise, craftsmanship, durability and commitment to site services. We are proud to be one of the leaders in pre-manufactured industrial buildings in our territory serving to global contractors who are listed in ENR Top 250.

Our export markets grow in time and reached to more than 35 different countries like below;

Iraq, Turkmenistan, Gabon, Azerbaijan, USA, Colombia, France, Nigeria, Russia, Ivory Coast, Oman, Greece, Iran, Georgia and more...

Nuhpanel applies its mission to meet the needs of its customers, environment and the community at the design and production level. This is applied via high quality product development and solutions with a common engineering and technical consultancy approach to the customer. Nuhpanel

has great competitive advantage in delivering high quality products for lower cost since sources only raw chemicals and steel sheets and manufactures all of its products in an integrated system. This brings us over 100 Million USD revenue annually.

We have earned the confidence of our customers who are concentrated on the oil and gas, mining, engineering and construction industries. We have helped them with their short and long term worker camp and accommodation needs and they keep on coming back to reuse and expand existing structures for same or different projects with very low cost second time investment.

500 EMPLOYEES
280 IN PRODUCTION 220 IN INSTALLATION

AVERAGE AGE **29** YEARS

3,1 YEARS
AVERAGE EXPERIENCES

28 R&D
EMPLOYEES

3 LABS
DESIGN
OFFICES

11 QA/QC & HSE EMPLOYEES



○ OUR CULTURE

**WE DREAM A FUTURE
WHERE TRUST IS ESSENTIAL
CURIOSITY IS SATISFIED AT THE PEAKS
KNOWLEDGE IS BLISS
INITIATIVE ACTIONS ARE TAKEN
WITH ENDLESS POSSIBILITIES**

ALL IS CONNECTED

CREATING THE BEST IN CLASS PLACE TO WORK

In business life where our company is evaluated with intangible assets such as knowledge and innovation, relationships and brands, we are directing our market capital by developing our capacity in attracting, satisfying and keeping the best talents.

Every individual is respected in our group. Everything we have succeeded has been realized with a common effort. We believe that we are ready to open every door with the talents we are equipped with.

Implementing innovative human resources systems to ensure that organization structures are in line with the strategic plans and targets of our company and our human resources are managed efficiently to keep employee satisfaction at the utmost level.



BEING HUMAN



COMPANY FROM EARTH



A+
PRODUCTS

SUPPORTING TO SOCIAL



○ EXCELLENCE ALWAYS

COMPETITIVENESS

AVAILABILITY

RELIABILITY



NGC INTERNATIONAL HQ
Gebze, TURKEY

ROUTE TO VALUE

10%
R&D
BUDGET

12
PATENTS

WHY

People

Environment

Future

WHAT

Trusted

Eco-Friendly

Innovative

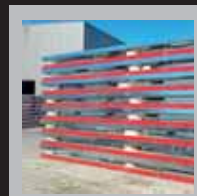
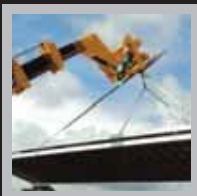
HOW

Engineering
Experience
Essentials

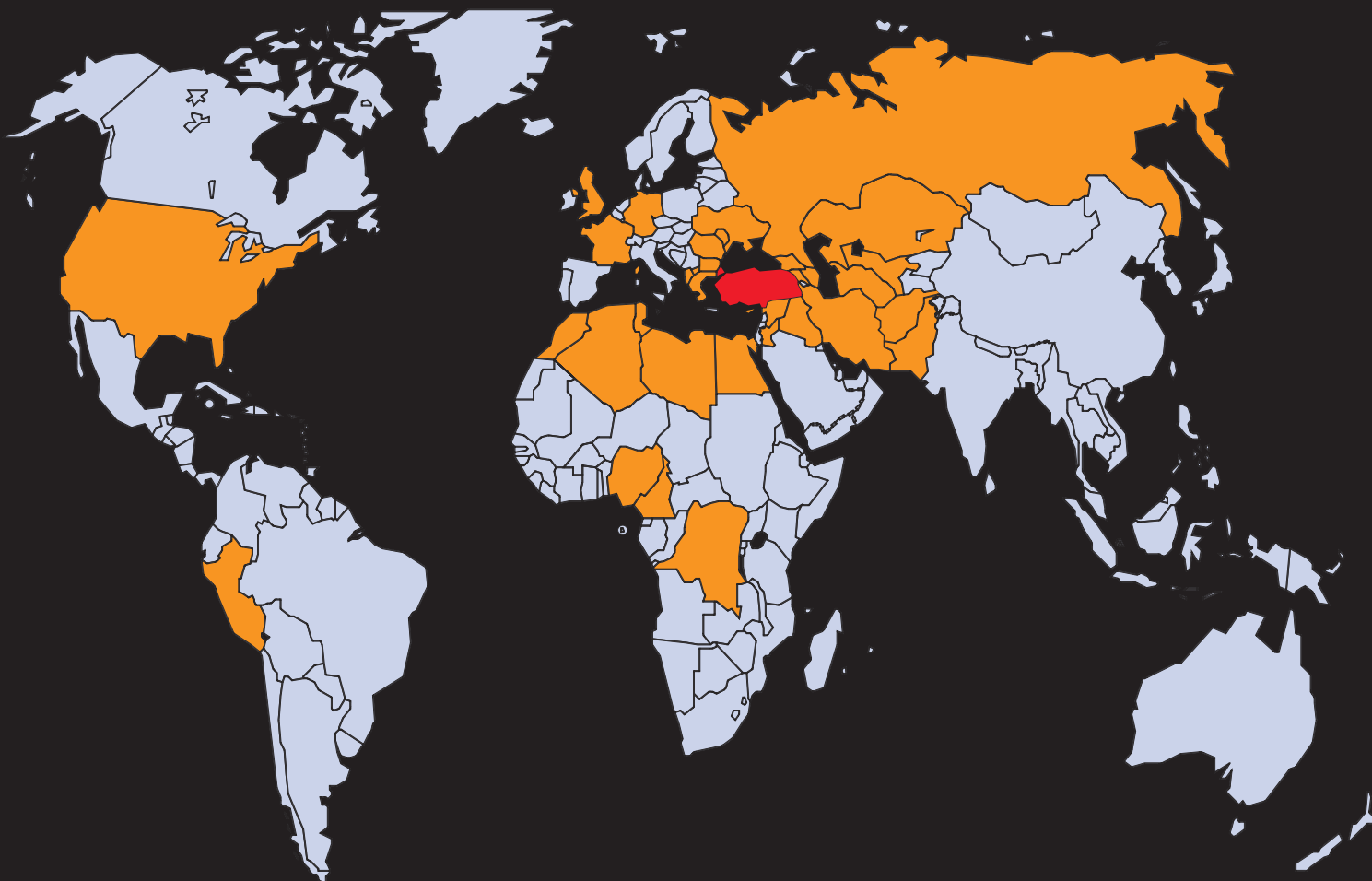
Less Consumption
Lower Emission
Lighter Structures

Sustainability
Smarter Solutions
Thinking OutB

200
Different Products



○ OUR MARKETS



30% Domestic Sales

70% Export Sales

35 EXPORTING COUNTRIES

OVER **80M** USD
EXPORT SALES

DEVELOPING YOUR ENVIRONMENT




EPC • Mobilization • Modular Buildings • Steel Buildings • Demountable Containers • Housing



CONSTRUCTION SITE MOBILIZATION

Prefabricated Panel System & Demountable Containers



TURNKEY WORKER CAMP MOBILIZATION

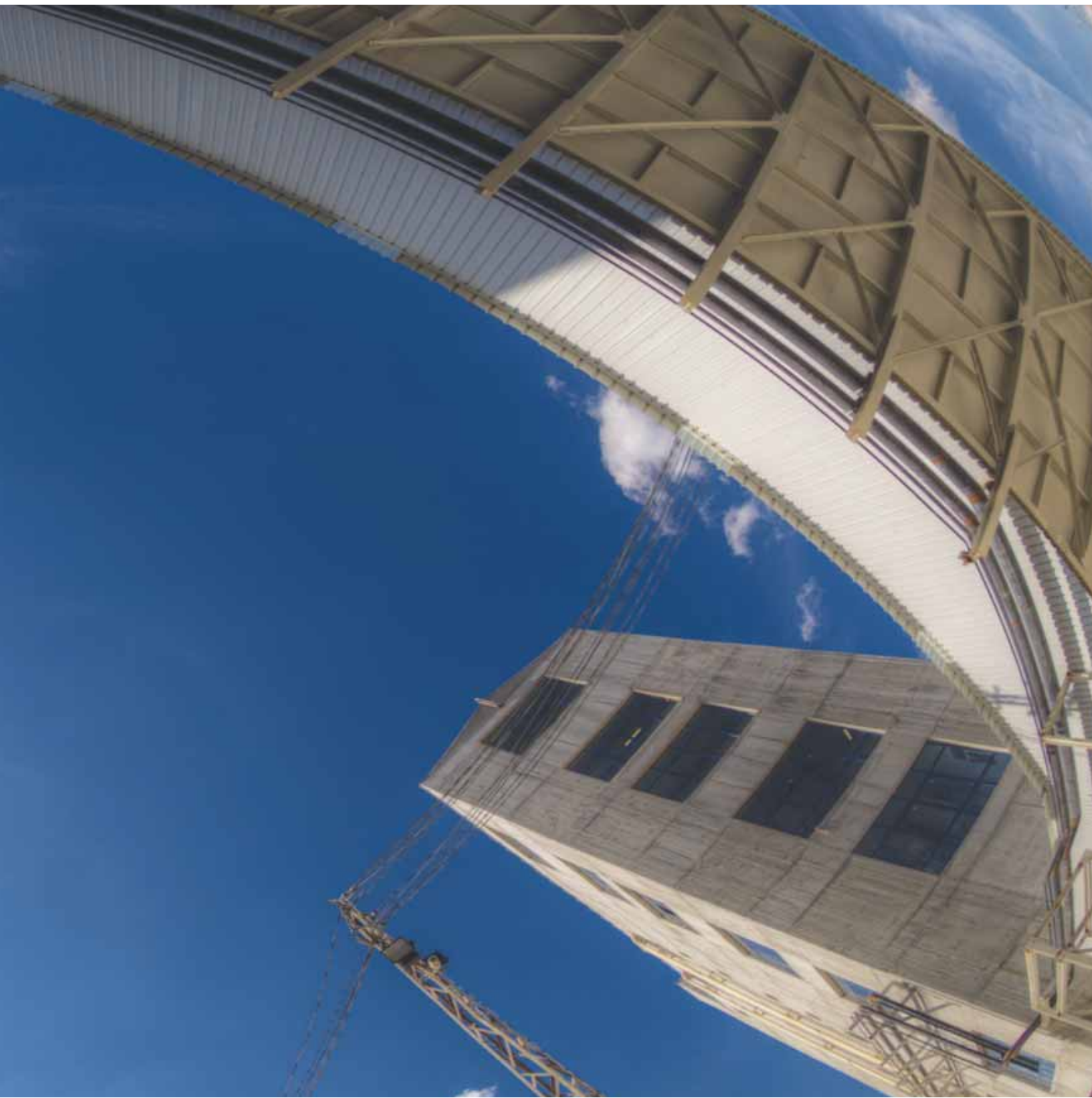
Prefabricated Panel System & Demountable Containers

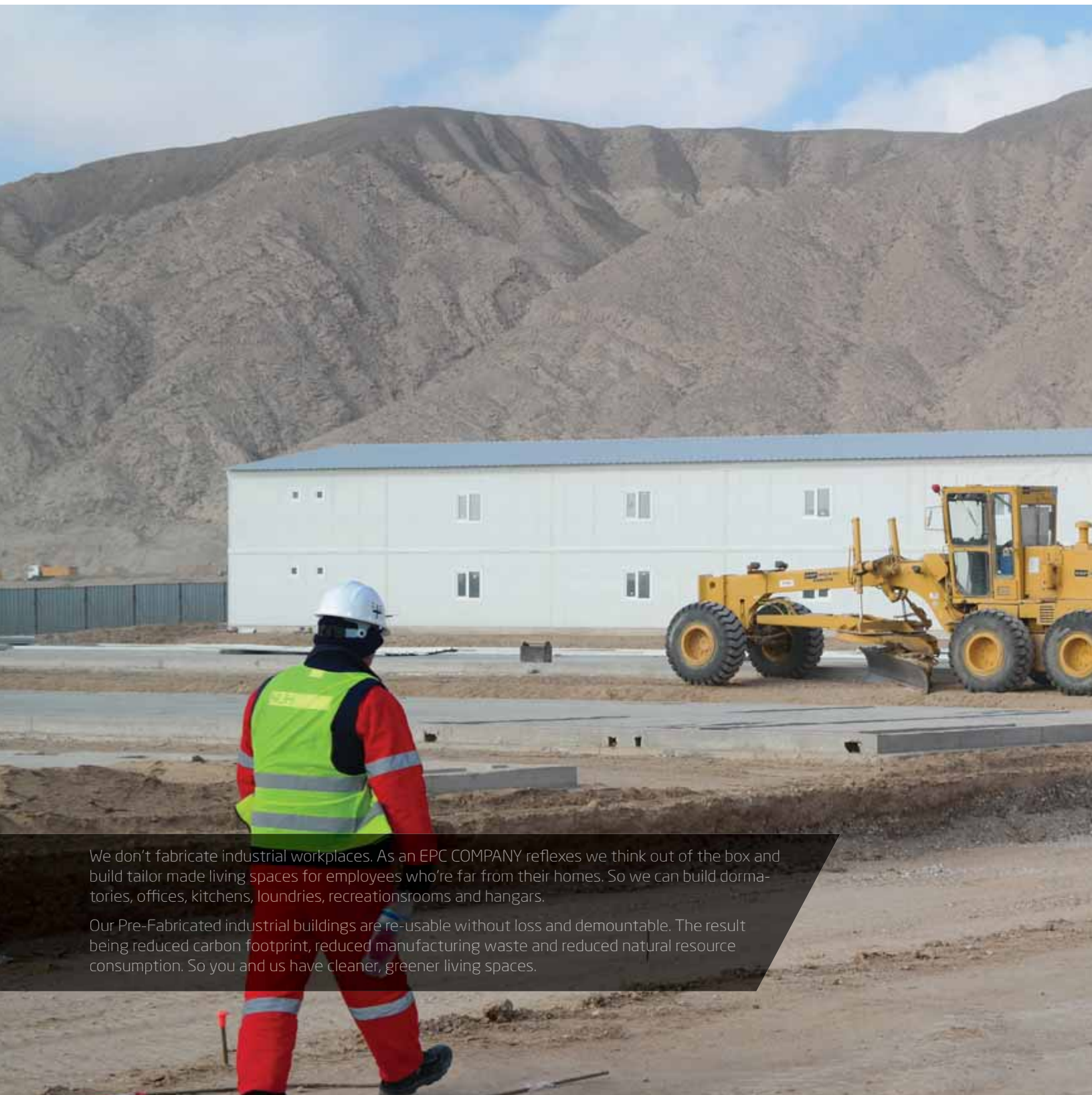


A low-angle, upward-looking photograph of a large industrial structure, likely a power plant, featuring white, ribbed panels and a blue sky with wispy clouds. The structure's lines converge towards the top of the frame, creating a sense of height and scale. A dark, semi-transparent geometric shape is overlaid in the bottom left corner, containing the text.

POWER PLANTS

Pre-engineered Steel & Sandwich Panels





We don't fabricate industrial workplaces. As an EPC COMPANY reflexes we think out of the box and build tailor made living spaces for employees who're far from their homes. So we can build dormitories, offices, kitchens, laundries, recreationsrooms and hangars.

Our Pre-Fabricated industrial buildings are re-usable without loss and demountable. The result being reduced carbon footprint, reduced manufacturing waste and reduced natural resource consumption. So you and us have cleaner, greener living spaces.





DEMOUNTABLE CONTAINERS

Flatpack Solution



CONSTRUCTION SITE MOBILIZATION

Prefabricated Panel System & Demountable Containers



INDUSTRIAL AREAS

Modular Buildings, Steel Structures & Sandwich Panels



HANGARS & AIRDOMES

Pre-engineered Steel Structures



CONSTRUCTION

Super & Infra Structure

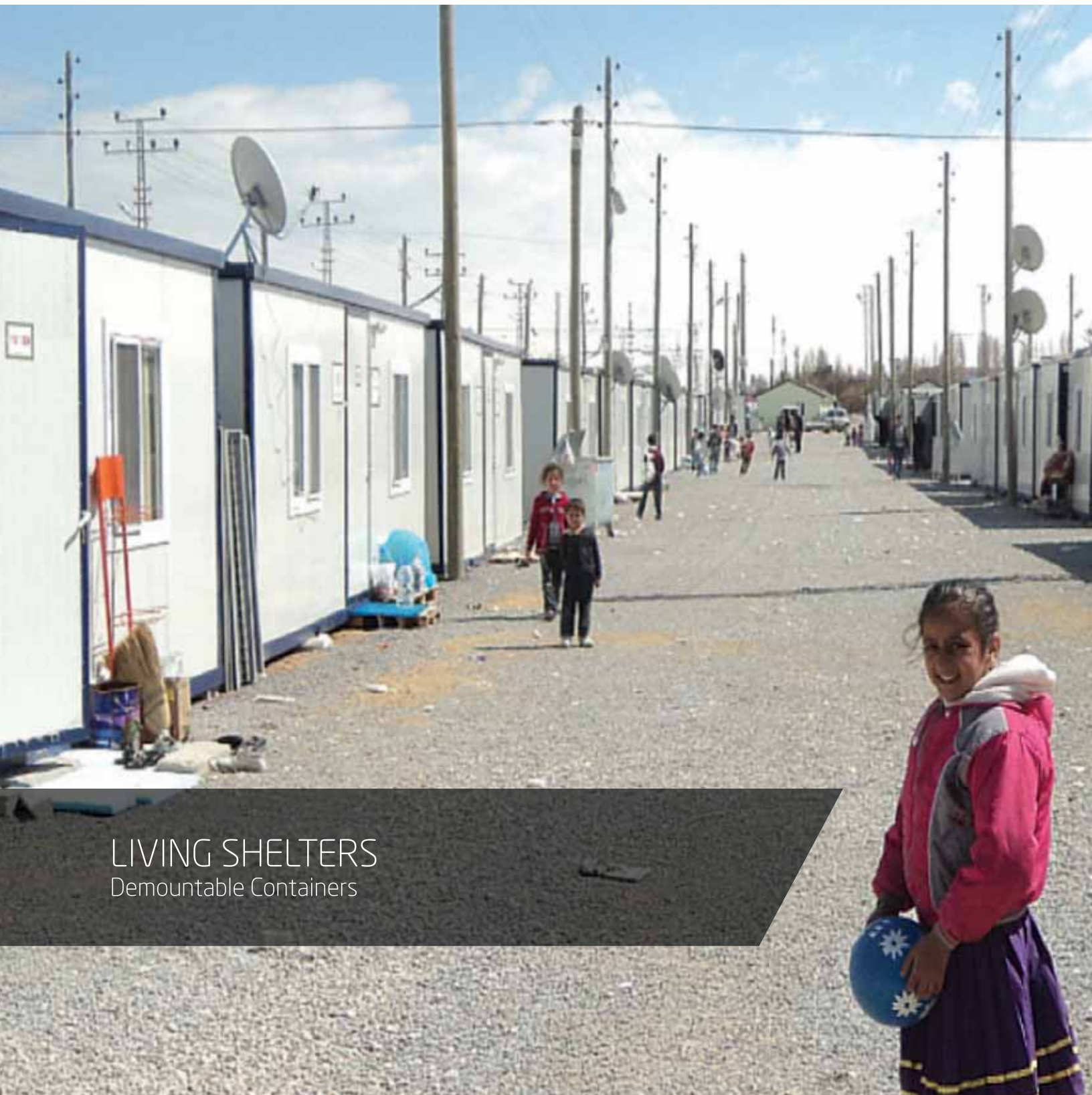


TELECOM SHELTERS

Smart Cabinets



CATASTROPHE UNITES
Instant Housing System



LIVING SHELTERS

Demountable Containers

NUHGROUP
INDUSTRIAL CONSTRUCTION

GOSB İhsan Dede Cad. No: 111
Gebze, Kocaeli - TURKEY
+90 444 4 684 **NUH**

