



COMPANY PROFILE

PRE-ENGINEERED STEEL
STRUCTURES

CAPACITY EXPANSION
TO 3.000+ TONS/MONTH
HEAVY INDUSTRIAL STEEL
PRODUCTION CAPACITY

//MOBILONIC.COM



WE EXTENDED OUR CAPACITY & SPACE FOR PRODUCTION (3.000+ TONS per MONTH)



“

Each steel structure project built by Mobilon IC is designed specifically to meet the needs of clients with high performance, efficient use and international quality standards.

Mobilon IC has achieved and operated based on quality management certificates: ISO 9001: 2015, OHSAS 14001 and IAS AC472.

Mobilon IC over 15.000m² factory has comprehensive manufacturing capabilities from the largest steel components to the smallest parts, the most complex parts to the simplest components, oversized components, special steel structure, difficult fabrication.

”

PRODUCTION PORTFOLIO

WE MADE 30+ DIFFERENT TYPES OF BUILDINGS

PE



IB



PF



**PRE-ENGINEERED
STEEL STRUCTURES PIPE ROCKS
and PROCESS BUILDINGS**

**INDUSTRIAL BUILDINGSs
AIRDOMEs and
HANGARs**

**PANELIZED and HYBRID
PREFABRICATED INDUSTRIAL
BUILDINGS**

WORKSHOP

(+4.000M2 NEW ALOCATION)

WE ARE ABLE TO RUN 3 PROJECTS AT THE SAME TIME



55.000 m2
CAMPUS
@GEBZE / TURKEY



9.000m2 +
Closed - Workshop with
Cranes



Over 35
Employees

FACT & FIGURES (SINCE 2009)

**9.000
m2
@G.O.S.B.**

Closed Production Workshop

with high capacity cranes
(**12 Tons each**) , loading
areas, large machinery park,
and **35 talented** employees.

**3.000+
Tons
per Month**

Monthly Production Capacity

with high quality production
and third party inspection
habits, including project
optimization ability.

**16K+ Tons
&
585K+ m2**

Completed Works and References

with experience in more
than **35 countries** with a
turnkey (EPC) approach.

2009

ESTABLISHED

85.000 m²
PRODUCTION CAPACITY

10%

R&D BUDGET

35
EXPORTING
COUNTRIES

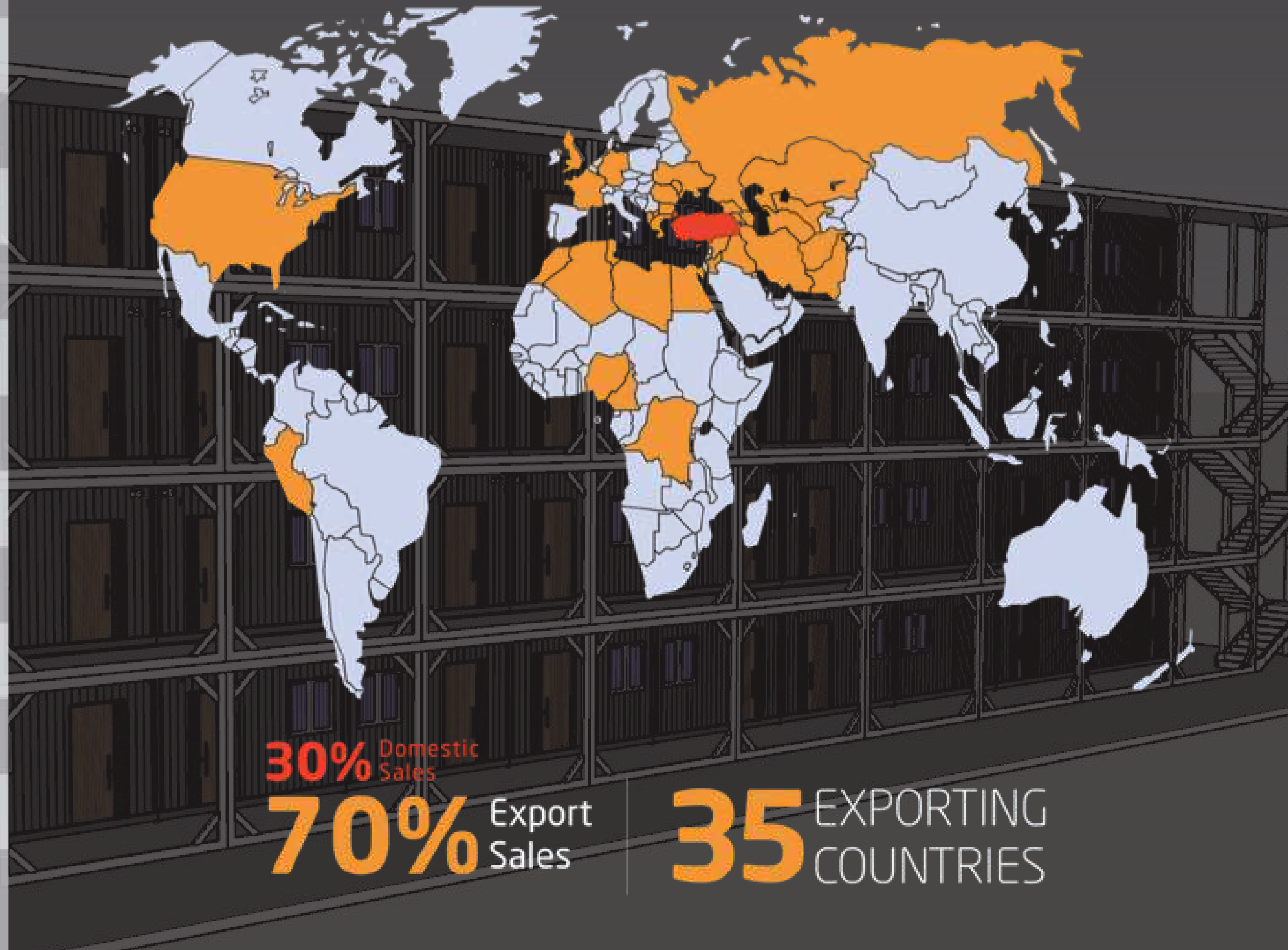
OVER SIX THOUSAND TONES

& **550.000** m²

COMPLETED WORKS

14% ANNUAL GROWTH

* Double of the global average according to the ENR Top 250 2014



30% Domestic Sales

70% Export Sales

35 EXPORTING COUNTRIES

OVER 9.500 TONS COMPLETED HEAVY STEEL WORKS @TURKMENISTAN
@ 11 DIFFERENT PROJECTs @ 4 DIFFERENT CITIES

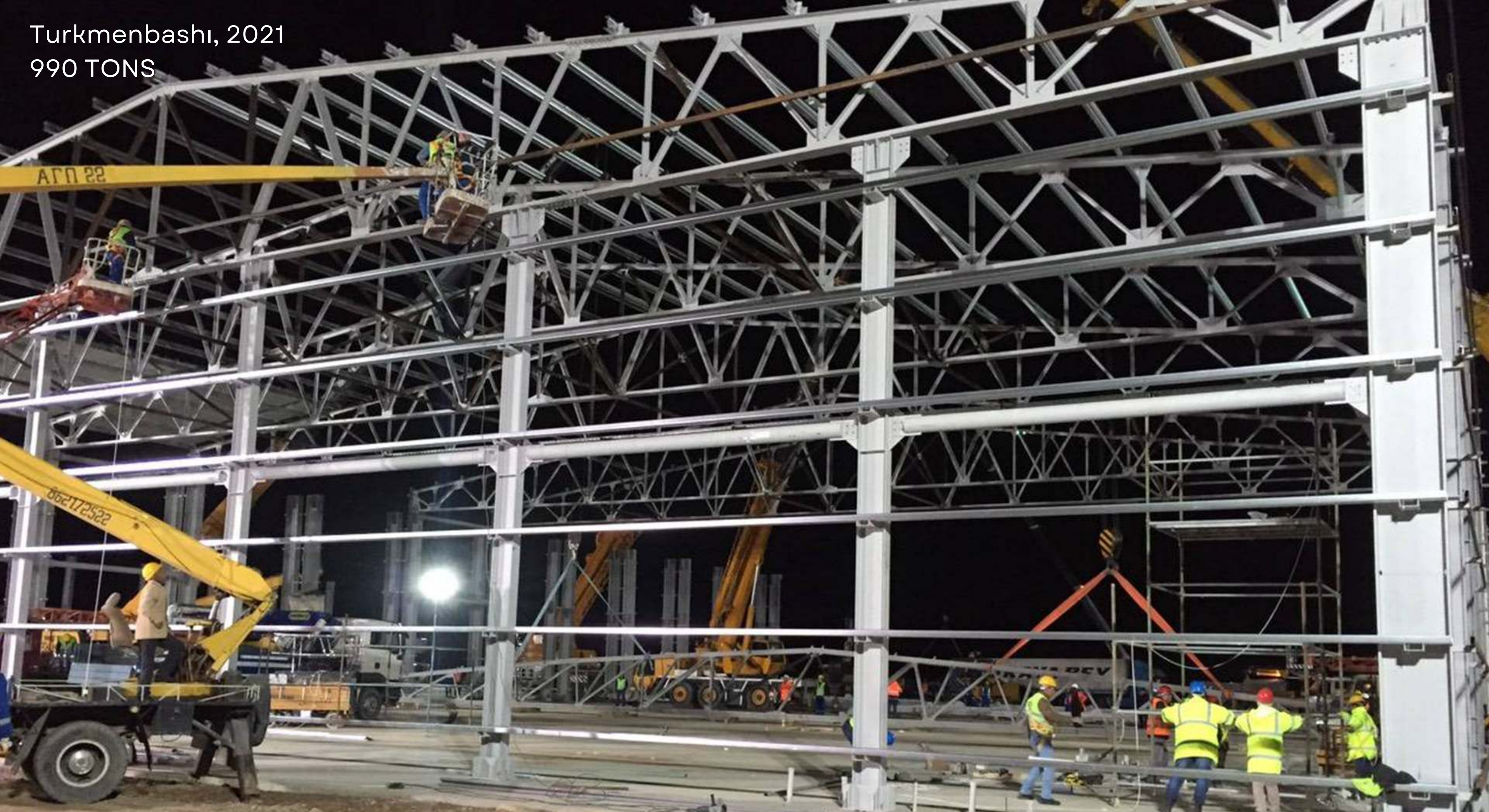


Garabogaz, 2015-2016-2017-2018
6.400 TONS



Asghabat, 2024
391 TONS

Turkmenbashi, 2021
990 TONS





**EPC
WORKS**

**HEAVY
STEEL**

**SANDWICH
PANEL**

REYHANLI, 2020
630 TONS



ISTANBUL, 2019
480 TONS



COMPETITIVENESS
AVAILABILITY
RELIABILITY

Mary, 2016
1.100 TONS



IDENTICAL ENGINEERING FOR TAILOR-MADE SOLUTIONS