

**SPICER**

EARTH  
MOVING  
SERVICES

# CAPABILITY STATEMENT



**P:** 0409 821 711

**E:** [geordy@spicerearthmoving.com.au](mailto:geordy@spicerearthmoving.com.au)

**W:** [www.spicerearthmoving.com.au](http://www.spicerearthmoving.com.au)

# SPICER

EARTH  
MOVING  
SERVICES



## TABLE OF CONTENTS

03 | About Us

04 | Core Competencies

05 | Key Differentiators

06 | Our Clientele

07 | Contact Details



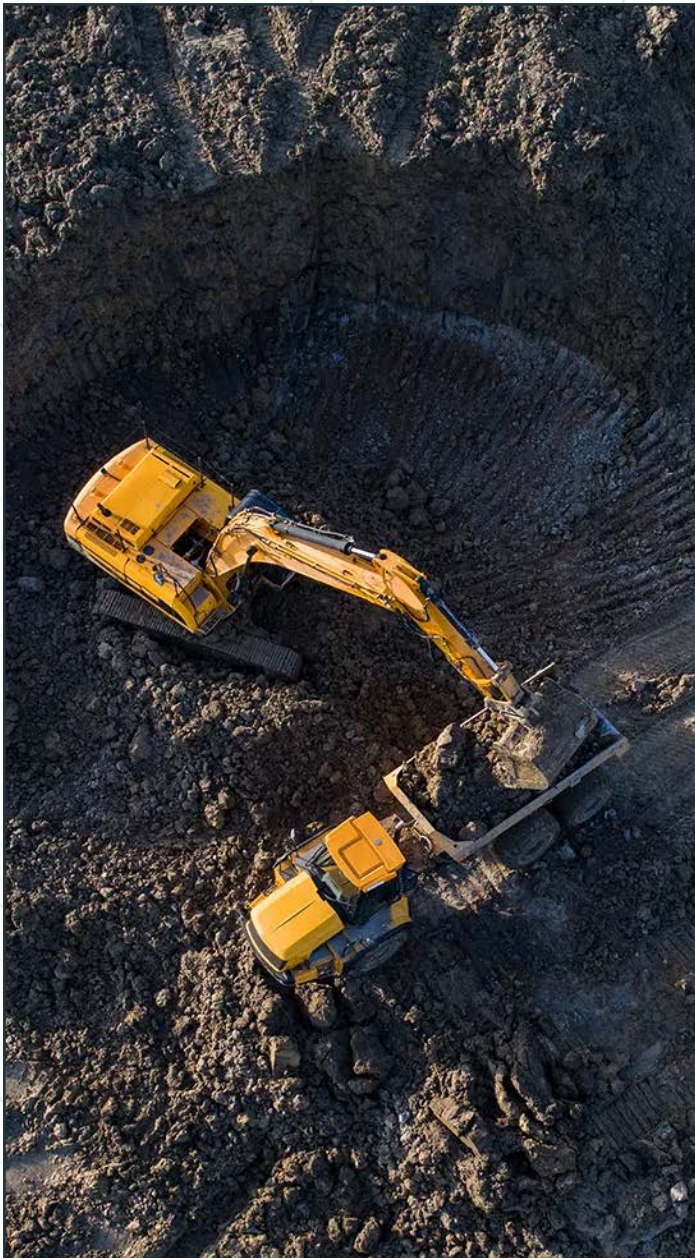
# SPICER

EARTH  
MOVING  
SERVICES

## ABOUT US

Spicer Earthmoving Services was established in 2021, by director Geordy Spicer, who has developed his skills and knowledge from a strong background in earthmoving and mechanical trade. Spicer Earthmoving Services is a provider of earthmoving and excavation services, serving the civil, agricultural, and mining sectors.

A dedication to delivering exceptional results for our clients, a vision to provide high quality, ground-up support to improve client's operations with cost effectiveness, efficiency and most importantly safety, in the front of our mind always. With years of industry experience and a team of skilled professionals, we offer comprehensive solutions for various construction, infrastructure, and development projects.





# CORE COMPETENCIES

### EARTHMOVING & EXCAVATION SERVICES

- Bulk earthworks
- Site preparation and leveling
- Trenching and backfilling
- Land clearing and demolition
- Dam and reservoir construction
- Road construction and maintenance
- Foundation excavation

### HEAVY EQUIPMENT FLEET

- Excavators – Caterpillar 325, 329E and 325F
- Bulldozers – Caterpillar D5K LGP
- Graders – Caterpillar 12M, 12M3, 140 and John Deere 672GP
- Scrapers – Caterpillar 623K
- Dump trucks

### PROJECT CONSIDERATIONS & CAPABILITIES

- Site assessment & evaluation
- Budgeting and cost estimation
- Safety management and risk assessment

### SPECIALISED EXPERTISE

- Rock and concrete breaking
- Erosion control and sediment management
- Drainage system installation
- Precision grading and leveling
- Dewatering solutions
- Pavement construction
- Bulk earthworks





# KEY DIFFERENTIATORS

## COMMITMENT TO QUALITY

We prioritise delivering exceptional results through meticulous attention to detail, adherence to industry best practices, and the use of state-of-the-art equipment and technology, including but not limited to late model Caterpillar and John Deere equipment with Trimble guidance solutions (UTS/GPS).

## EXPERIENCED WORKFORCE

Our team comprises highly skilled and trained professionals who bring extensive and diverse expertise to every project, ensuring efficient and reliable service.

## SAFETY EXCELLENCE

We prioritise the safety of our workforce, clients, and the environment. We strictly adhere to safety regulations, implement comprehensive safety programs, and conduct regular training and certifications.

## CLIENT-CENTRIC APPROACH

We value strong client relationships and focus on understanding our clients' unique needs. We work collaboratively, providing customised solutions and maintaining open communication throughout projects.

## ENVIRONMENTAL STEWARDSHIP

We are committed to minimising our ecological footprint and promoting sustainable practices. We integrate environmentally friendly methods and technologies into our operations whenever possible.





## OUR CLIENTELE

Our previous and ongoing satisfied customer base consists of:

- BMD Group
- JNC Group
- Robson Civil Projects
- Liverpool Plains Shire council
- Dungog Shire council
- Stabilised Pavements Australia
- MAAS Group
- Multiple private and agricultural entities

Some of our major past performances include:

- Multiple overtaking lanes, shoulder widening, pavement and safety upgrades on Newell Highway Upgrade – BMD Group
- Ranagari Road Upgrade – MAAS Group
- Malabar Maxwell Project underground portal, coal processing and stockpiling area, haul road and conveyor foundation – Robson Civil Projects
- Multiple pavement upgrades – Stabilised Pavements Australia



The background of the entire page is a dark blue-grey color with a white topographic map pattern consisting of concentric, wavy lines representing terrain contours.

# SPICER

EARTH  
MOVING  
SERVICES

## CONTACT US

For enquiries, quotes, or to discuss your project needs, please contact us using the details below.

**P:** 0409 821 711

**E:** [geordy@spicerearthmoving.com.au](mailto:geordy@spicerearthmoving.com.au)

**W:** [www.spicerearthmoving.com.au](http://www.spicerearthmoving.com.au)

**Note:** This capability statement serves as a general overview of Spicer Earthmoving's core competencies, specific requirements or needs can be assessed on a case by case basis.