

SENIORS HOME SUPPORT PROGRAM



The Seniors Home Support (SHS) program is an integrated program that provides primary medical care at home for seniors who are unable to visit a doctor’s office due to health, mobility, memory, or social challenges. A dedicated team of healthcare professionals—including family doctors, nurses, pharmacist, chiroprapist, and community paramedics—work together to support the patient’s health and well-being at home.

The SHS team also collaborates closely with home care coordinators and other community providers, such as visiting nurses, to ensure that care in the home is well-organized, consistent, and responsive to changing needs.

HOW IS CARE PROVIDED?

Care is provided in a variety of ways including:

- Home visits
- Telephone calls
- Virtual visits (via Ontario Telemedicine Network)

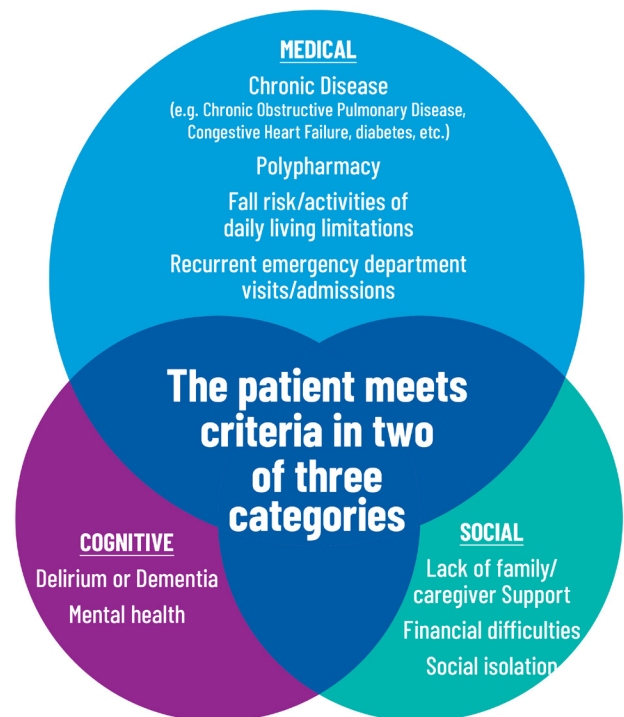
HOW ARE REFERRALS MADE?

Anyone can make a referral:

- Patients, family members, caregivers
- Health care provider
- Community support services

WHAT IS THE ELIGIBILITY CRITERIA? TO BE ELIGIBLE, YOU:

- Are 65 years or older
- Have a valid OHIP card
- Live in Markham or Stouffville communities
- Are home-bound and unable to attend in-person medical appointments
- Are in need of a primary care practitioner to do home visits and willing to transfer care from your existing primary care provider
- Meet the inclusion criteria in two of three categories shown in the diagram



CONTACT US

Seniors Home Support Program
 c/o Markham Family Health Team
 122 Cornell Park Avenue, Unit 1
 Markham, Ontario L6B 1B6

Phone: 437-248-1642

Fax: 905-910-0951

Hours of operation:

Monday to Friday: 8:30 a.m. to 4:30 p.m.

