



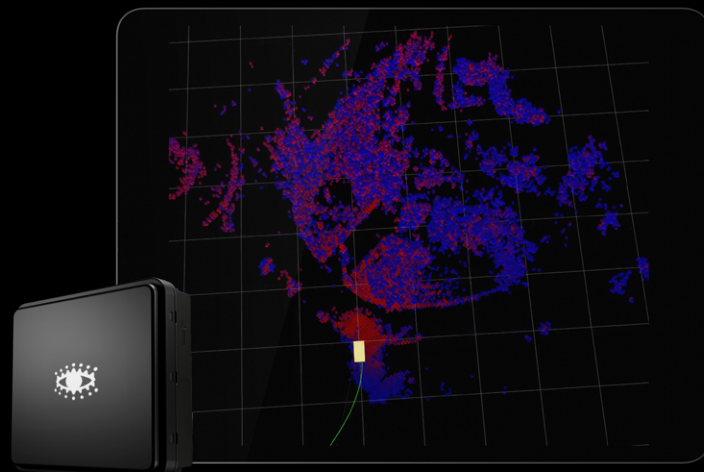
# Radar-based navigation and autonomy

*VISION BEYOND THE VISIBLE*



## Oden Drive

### NAVIGATE WHERE OTHERS FAIL



#### Odometry

– accurate self-motion



#### SLAM

– localisation and mapping



#### Object detection & classification

– environmental awareness



#### Free space & drivable ground

– safe navigation paths

### About Oden Drive

Oden Drive sets a new standard in autonomous navigation, operating reliably without GNSS in dust, sand, darkness, rain, snow, and fog.

Combined with our 4D imaging radar, Hugin D1, it delivers unmatched performance with an API built for easy integration into any perception stack.

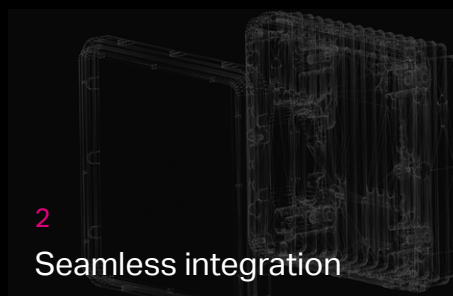
1

All-weather reliability



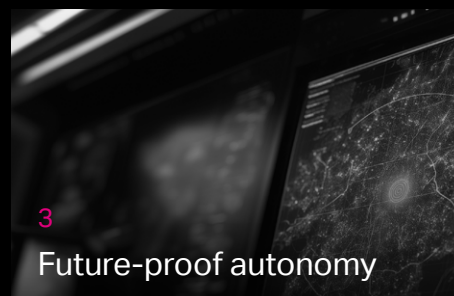
2

Seamless integration



3

Future-proof autonomy



Want to learn more? Contact Sensrad's sales team at [sales@sensrad.com](mailto:sales@sensrad.com) or visit [sensrad.com](https://sensrad.com).