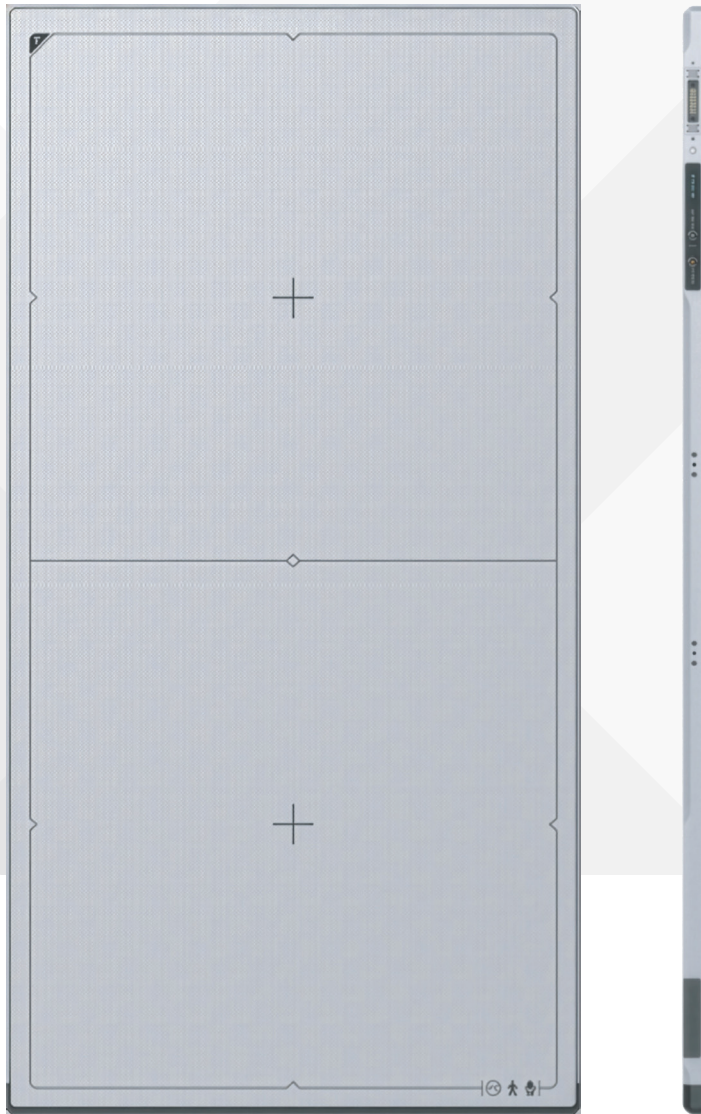


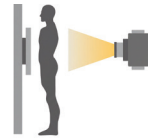
MEDLINK VIVIX-S 4386W

Mid-Size Format X-Ray Flat Panel Detector



MEDLINK IMAGING

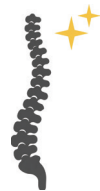
a **VIEWWORKS** company



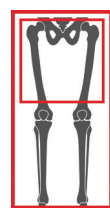
Single-shot Exposure
for 43 x 86 cm Image



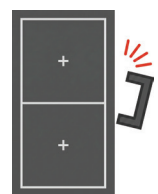
High-Resolution



Spine/Long
Bone Scan



Multi-Scan Mode



Portable

Features

Extended Imaging Coverage

17" × 34" active area enables one-shot long bone and spine imaging.

17" × 17" multi-scan mode allows selective body part imaging.

Optional secondary FPD (14" × 17" or 17" × 17") available for extended coverage. (RAW image — SDK available only)

Ideal for general radiography, orthopedic, chiropractic, and pediatric applications.

Superior Image Quality

140 μm pixel pitch delivers sharp, high-resolution diagnostic images.

Lightweight and Wireless Design

Lightweight, wireless structure allows bedside imaging in ICU or OR with minimal patient movement.

Note: The detector is not designed to support patient weight.



VIVIX-S 4386W

Technology	a-Si TFT
Scintillator	CsI • Gadox
Pixel Pitch	140 μm
Spatial Resolution	3.5 lp/mm
Pixels	3072 × 6144 pixels • 3072 × 3072 pixels
Image Size	17" × 34" (43 cm × 86 cm) • 17" × 17" (43 cm × 43 cm)
Grayscale	16 bit
Image Acquisition Time	10 s
Recommended Cycle Time	12 s
Data Interface	Gigabit Ethernet
X-ray Generator Interface	DR Trigger Mode / AED Mode
Dimensions	90 cm × 46.5 cm × 1.8 cm
Weight	8 kg
Battery	Lithium Ion 3,400mAh x 2 • 10 h (standby)
X-ray Voltage Range	40 – 150 kVp
Operating Environment	10°C to 35°C 30% to 85% RH (non-condensing)
Power Consumption	DC 24 V, 1.1 A

* Specifications are subject to change without prior notice.