



The leading Multimodal platform for real-time Visibility

*The ultimate competitive edge in a disrupted world*



# Disruption is the **new normal**

Recurring crisis, stronger demand, lower capacities, high freight rates, port congestions, truckers shortage are highly impacting the performance of global supply chains



70% of delays  
Cost up to X10



-12% capacity pre-covid  
Trans-pacific cost X2



Up to 15% of delays  
480k missing truckers

# The Lack of Visibility



## A siloed network

Multiple transport providers working in silos with a lack of interoperability



## System inefficiencies

Legacy systems that rely on manual processes



## Low service reliability

Huge gap between the door-to-door plan & the actual performance

**Limited visibility for in-transit goods**

*Where are my goods? When will they arrive?*

# Wakeo at a glance

Leader in multimodal  
real-time visibility

Trusted partner of  
global companies

All shipments tracked in  
one place since 2016

## Clients sample

### Shippers



### Transport Service Providers



## Team

80+ people

Supply Chain specialists :  
from Kuehne & Nagel, DSV-  
Panalpina, Maersk, Bolloré,  
KPMG and PWC

Tech & Data experts : from  
Thalès, Cern research  
institute

## Partners



## Investors



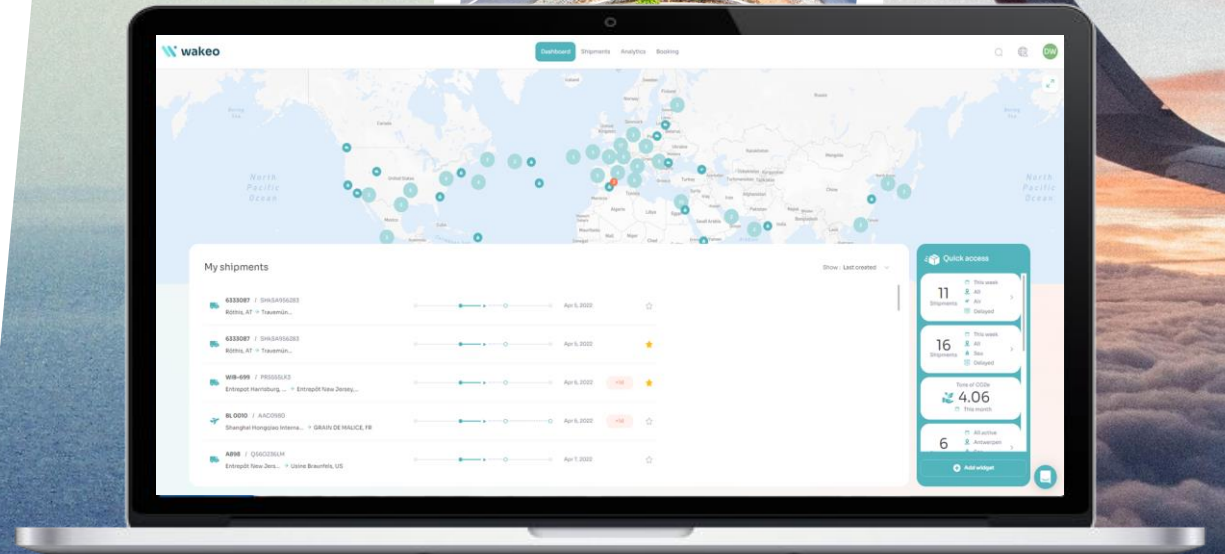


# The Solution Wakeo

A SaaS platform to bring  
**real time visibility** on  
**multimodal transport flows**

To help shippers and transport  
service providers

build operational excellence  
and improve customer satisfaction



# Key Features

## Wakeo Control Tower



### Tracking & Alerting

Real-time multimodal ETA  
Initial plan VS Reality  
Proactive Alerting  
Document sharing

**Proactivity instead  
of reactivity**

## Wakeo Performance tools



### Intelligent Analytics

Transport performance  
Transit time monitoring  
Demurrage & Detention  
Data quality dashboard

**Data-driven  
supply chain  
for smart decisions**



### Digital Booking

Digitization of booking  
Automating manual process  
Structured communication  
Scalability & Efficiency

**Simplify the  
booking process**



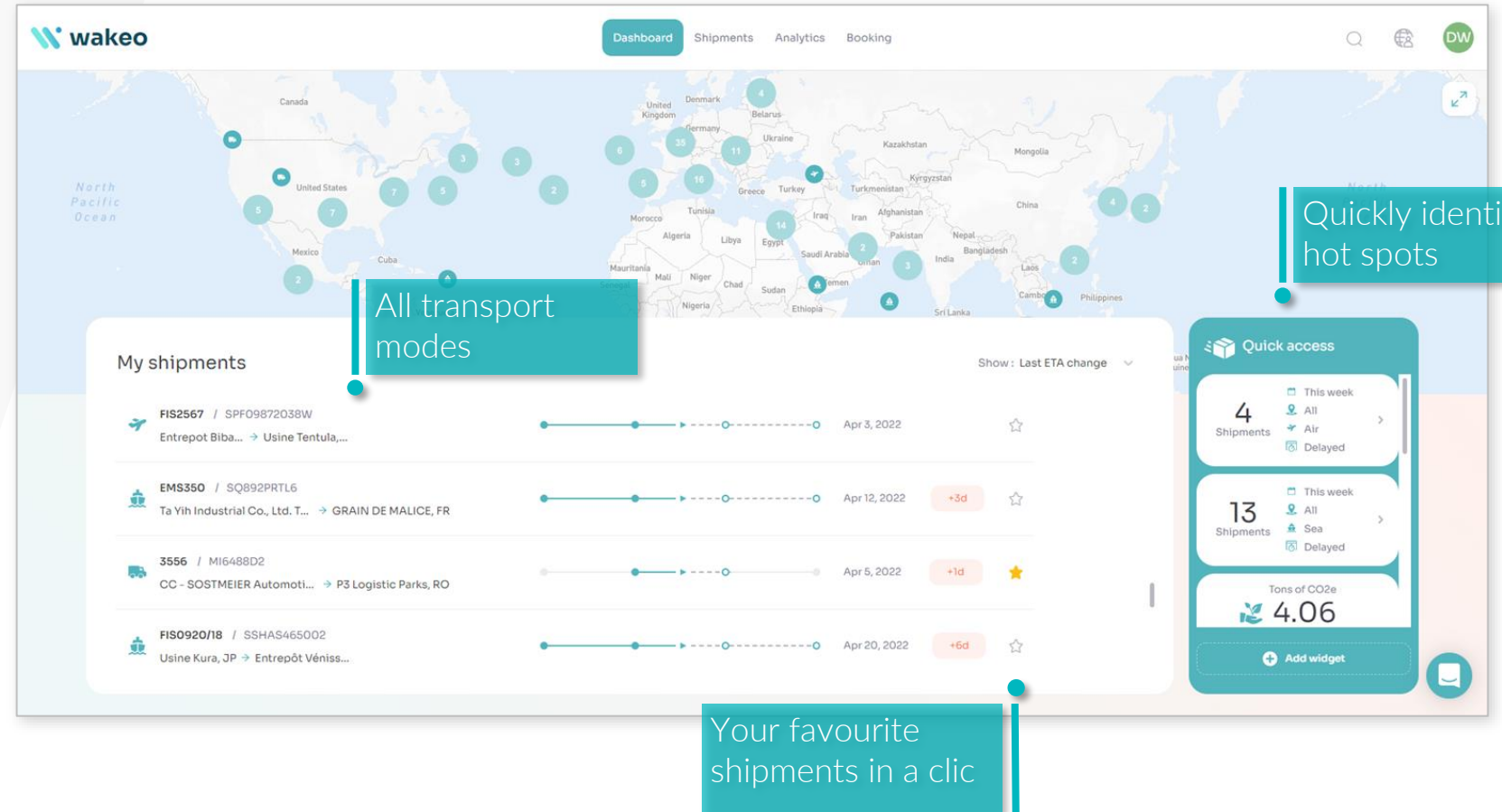
### Carbon footprint Calculator

All mode of transports  
Each individual shipment  
Global CO2 reports  
GLEC & EN16258 compliant

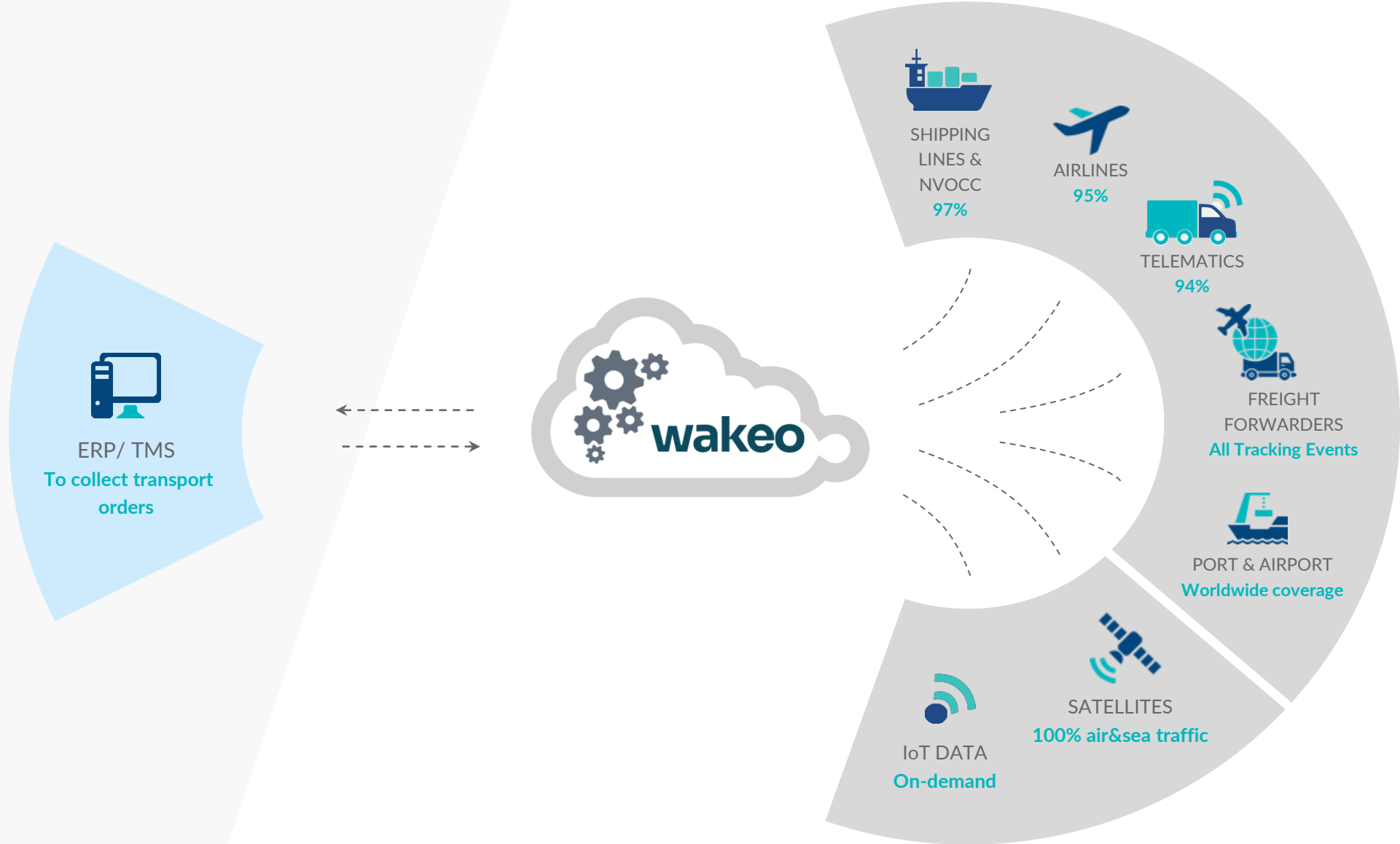
**Measure & monitor  
the environmental  
impact**



All carriers across all transport modes in one place  
Manage issues by exception and focus resources on added-value actions

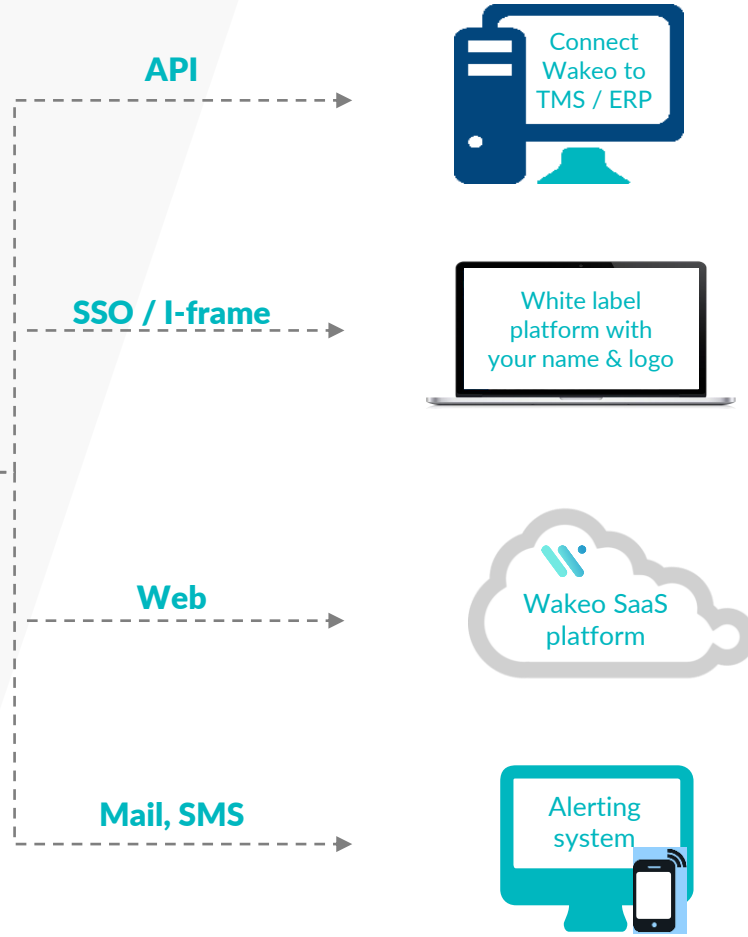


# The Sources of data





# The Connected Platform



**Push ETA to your TMS/ERP to share info and improve global operational efficiency**

**Embed control tower powered by Wakeo to your customer Portal**

**Access tracking data anytime, anywhere**

**Receive proactive alerts to manage the deviations by exception**

# Seafreight connectivity



## The broadest overseas network

Anticipate and limit the impact of the current low seafreight schedule reliability thanks to enriched and dynamic ETA information

**+97% of Shipping lines and NVOCC**  
**ETA accuracy 92% 2 weeks before the arrival**

Timeline with milestones updates  
Including Empty container pick-up, Gate-in, Loaded, Departure, ETA changes, Transshipment, Arrival, Unloaded, Gate-out, Empty container return

Tracking in real-time on a map

SD-4447

Information Transport documents

Transportation

Ningbo Zhongjun Car Parts Limited Company, CN → Shanghai, CN

Shanghai, CN → Antwerpen, BE

Container number	EMCU8279271
Master BL	EGLV142157670611
Booking number	
Container type	40'HC
Carrier	Evergreen Line
Vessel	THALASSA NIKI
Incoterms	FOB
Transport mode	FCL

Antwerpen, BE → Usine Cauvel Belgique, BE

At delivery, predictive deviation from the plan with dynamic ETA info

# Airfreight connectivity



## For time-critical shipments

Monitor intermodal activities & transshipments at secondary or hub airports and reduce the rate of disruptions

**+95% of Airlines**  
**ETA accuracy 97% 4h before the arrival**

The screenshot displays the Wakeo dashboard for a shipment BL 0010. The interface includes a left sidebar with a timeline of events, a central map showing the flight path, and a right sidebar with detailed shipment information. Callouts highlight key features:

- Tracking in real-time on a map:** Points to the map showing the flight path from London to Rochester.
- Real-time FSU updates From BKT to DLV:** Points to the 'View alerts list' section.
- Detailed information for each leg:** Points to the 'Transportation' section, which lists the following legs:
  - Usine Hennessy Pont Neuf, FR → Paris Charles de Gaulle Airport, FR
  - Paris Charles de Gaulle Airport, FR → Skyhaven Airport Rochester, US
  - Skyhaven Airport Rochester, US → Moët Hennessy USA, US
- Transport documents attached:** Points to the '3 Documents' section, which lists three commercial invoices with their dates, types, and filenames.

Date	Type	Filename
Apr 4, 2022	Commercial Invoice	Delivery_order_B-09876.pdf
Apr 4, 2022	Commercial Invoice	Packing_List.pdf
Apr 4, 2022	Commercial Invoice	AW_0900876AF009_AAC.pdf



# Road Connectivity



## Door-to-door visibility & Road shipment

For a true multimodal solutions that fills in the gap of pre & post carriage visibility or to cover national or continental trucking activities with local carriers

**94% coverage**

**+850 telematics**

**+150 000 carriers**

**ETA accuracy 91% 6h before the arrival**

Plan versus Reality  
Dynamic ETA info

**wakeo**

POD ▾

▶ **P3 Logistic Parks** 🇷🇴  
Mar 18, 2022 - 13:00

View alerts list

**CC - SOSTMEIER Automotive G...** 🇩🇪

✓ **Truck departure** ▴  
Mar 14, 2022 - 09:15  
⌚ Planned Mar 13, 2022

**P3 Logistic Parks** 🇷🇴

▶ **Truck arrival** ▴  
Mar 18, 2022 - 13:00  
⌚ Planned Mar 17, 2022

+1d

Information

Shipments Analytics Booking

Map showing route from Germany to Romania.

**Transportation**

CC - SOSTMEIER Automotive GmbH, DE → P3 Logistic Parks, RO

CMR number 357951  
Truck reference  
Provider  
Tracker ID  
Carrier  
Incoterms  
Transport mode

Schenker Logistics

Enriched ETA calculation taking in account

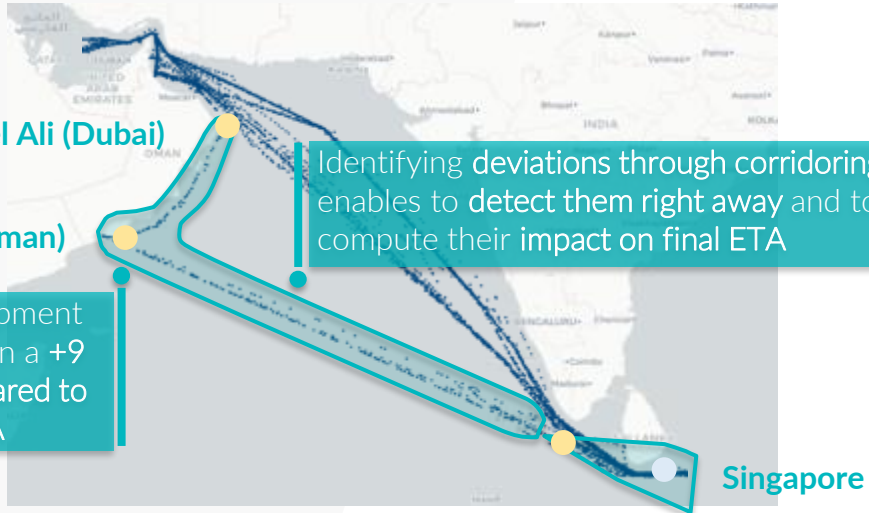
- Smart routing (real-time updates, truck restrictions)
- Driving Status (local regulatory & traffic bans)
- Real-time traffic (congestion, border crossing)
- Location Profiles (queueing time, congestion detection)

# The Data Engine



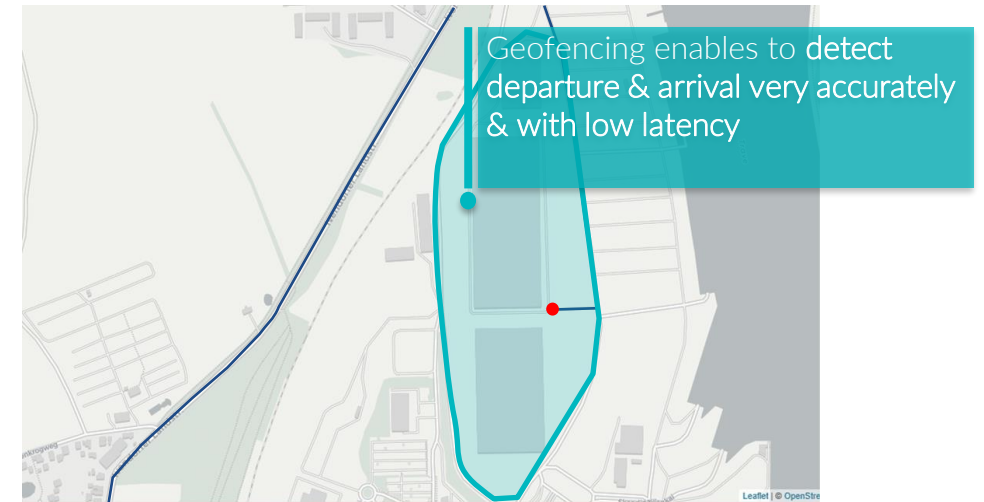
## Easily identify deviations

Detect deviations from the initial plan through coridoring and clustering algorithms



## Confirm accurate arrivals and departures

Terminals and warehouses areas  
geofencing



# Predictive Tracking & Proactive Alerting



## Multimodal Real-time tracking

Track inventory anytime,  
anywhere.  
Best-in-class ETAs powered by  
algorithms to anticipate delays  
and manage proactively

Proactive alerts to anticipate  
delays and manage by exception

**wakeo**

### ETA (Port) Change

Adjusted date  
29 Jul (+19 days)

► **Shipment information**  
• Shipment reference: CSNU6413151 | User reference: 8155066

Place	Type	Estimated	Adjusted
Kaohsiung	Container gate in at departure port		19 May
Kaohsiung	Container loaded on vessel		25 May
Kaohsiung	Departure	25 May	25 May
Singapore	Container unloaded from vessel (Transshipment)		03 Jun
Hamburg	Arrival	10 Jul	29 Jul

For more details on your operations

[Go to Wakeo](#)

ETA: Estimated Time of Arrival  
Change your settings to unsubscribe or subscribe to notifications

Initial Plan vs  
Adjusted Time of Arrival

POD ▾  
► **Antwerpen**   
Apr 9, 2022 **+15d**

[View alerts list](#)

✓ **Vessel departure** ▾ **+9d**  
Feb 28, 2022 - 05:13

**Singapore**

✓ **Vessel arrival** ▾ **+14d**  
Mar 12, 2022

✓ **Container unloaded from vessel**  
Mar 12, 2022

✓ **Container loaded on vessel**  
Mar 14, 2022

✓ **Vessel departure** ▾ **+14d**  
Mar 15, 2022

**Antwerpen**

► **Vessel arrival** ▾ **+15d**  
Apr 9, 2022

► **Container unloaded from vessel**  
Apr 9, 2022

► **Truck departure** ▾ **+15d**  
Apr 10, 2022

**Usine Cauvel Belgique**

► **Truck arrival** **+15d**  
Apr 10, 2022

🕒 **Planned Mar 26, 2022**



# Intelligent Analytics



## Objectify service level

Data you can trust to measure performance. Actionable insights to re-engineer transport flows: reduce in-transit inventories, and boost customer satisfaction

Monitor Key Metrics such as volumetry, OTD, transport performance, tracking performance, Detention & Demurrage cost, CO2 calculation



# Digital Booking



## The end of manual process

Seamless booking steps.  
Structure the communication between shippers and freight forwarder. Error-free from sending request to booking confirmation.

Full digitalized booking process

Booking of Ocean and Air shipments including drayage

Booking templates for regular flows

The solution

# CO2 emission calculator



## Measure your environmental impact

Design to monitor and comply with sustainability goals on transport emissions

Closer than ever to the actual routing



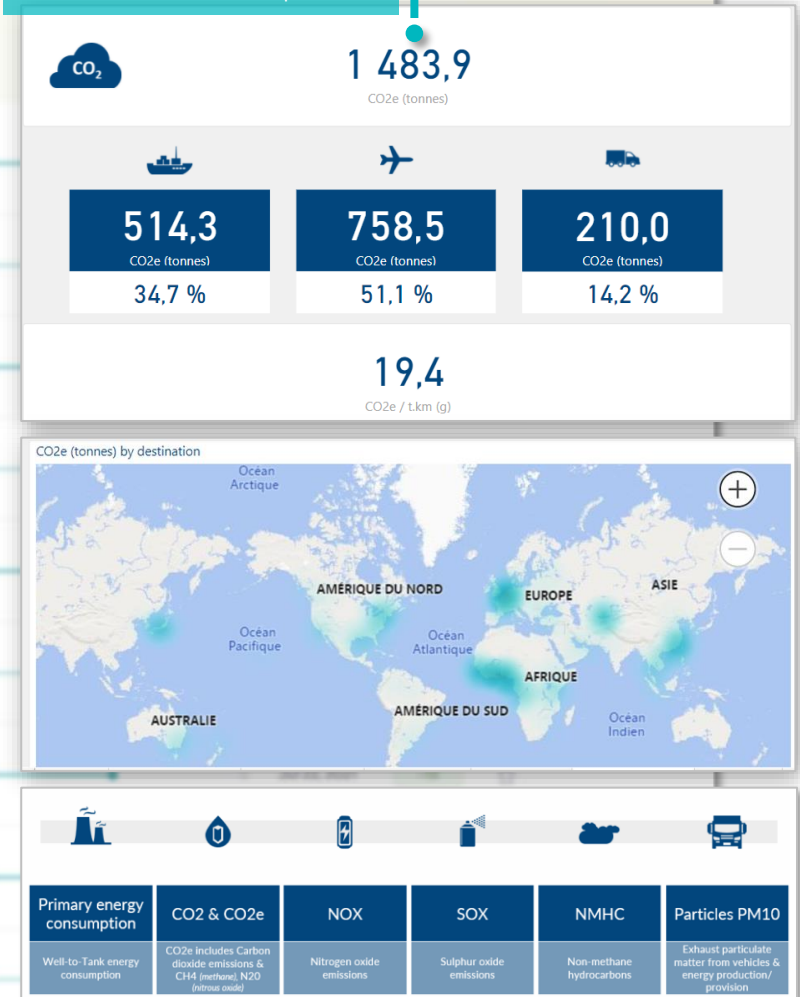
Shipments list

ETA: 05h, POD: --, AS: ☒ Favorite: ☐ Export: csv

	SALLY MILLMAN / E2121S00131 / TRHU7501657 / CO2e 2.22 t	La Havre, FR → Singapore, SG
	2021Q0009 / C12150221 / CO2e 1.48 t	Hongkou Kaoshan Int'l... → Paris Charles de Gaulle A...
	YZHX2349 / E2121S00131 / TRHU7501657 / CO2e 2.22 t	Lianyungang, CN → Antwerpen, BE
	2021Q0042 / C12150221 / CO2e 1.48 t	Taiwan
	0562152 / CO2e 1.48 t	Shanghai
	0121048 / C12150221 / CO2e 1.48 t	Shanghai Pudong Interna... → Paris Charles de Gaulle A...
	+ / C12150221 / CO2e 1.48 t	Paris Charles de Gaulle A... → Chetani International A...
	BT 10168 / T0121000101 / BEAUZ1701000 / CO2e 1.48 t	Fox Sur Mar, FR → Yokohama, JP
	UN2911 CLASS 7 - EXCEPT... / C12150221 / CO2e 1.48 t	Houston George Bush Int... → Paris Charles de Gaulle A...

CO2 calculation for each individual shipment

Global dashboard for all mode of transport





# From reactive to predictive

- A 24/7 digital control tower to build a resilient supply chain
- Provide a premium experience to grow and retain your customers
- Automated processes to stop losing time with manual tasks
- Predictability and anticipation to reduce emergency costs
- Objectify performance to optimize transport operations





## Real-time supply chain

Follow us:



[www.wakeo.co](http://www.wakeo.co)



[www.linkedin.com/company/wakeo](http://www.linkedin.com/company/wakeo)



[Name.surname@wakeo.co](mailto:Name.surname@wakeo.co)



+33 6 xx xx xx xx