



ALUMINUM SERVICE BODY

RENEGADE

INSTALLATION MANUAL



**2500/3500 CHASSIS – 56" CAB-TO-AXLE (CA)
PICKUP BED DELETE APPLICATIONS**

Table of Contents

Section 1: Front Bracket Install	Pg 1
Section 2: Rear Bumper Bracket Install	Pg 1
Section 3: Lifting Body	Pg 3
Section 4: Rear Body Mounting	Pg 3
Section 5: Front Body Mounting	Pg 7
Section 6: Intermediate Crossmember Mounting	Pg 9
Section 7: Bumper Install	Pg 10
Section 8: Rear Camera Reinstallation	Pg 11
Section 9: Spare Tire Crank Access	Pg 11
Section 10: General Wiring	Pg 12
Section 11: Fuel Filler Neck Installation	Pg 14
Section 12: Parts Index	Pg 15
Section 13: Torque Chart	Pg 17

**Please note: Some OEM Models / Trim levels will not fit this bed application.
Please refer to OEM Body Builder for recommendations**



MAINTENANCE INSTRUCTIONS

- » Every 3 to 6 months, check all doors and tailgate for tight closure of assemblies. Lock handles, lock cylinders, rotary mechanisms, and striker loops do not require periodic lubrication.
- » Hinges: Check for tightness
- » Paint: Touch up any damaged surfaces.
- » Rinse snow and ice; pre-wetting chemicals from body during and after incimate weather.
- » Adjustment of the door closure assembly is the responsibility of the owner. Failure to adjust will allow water intrusion or unsecured compartment.



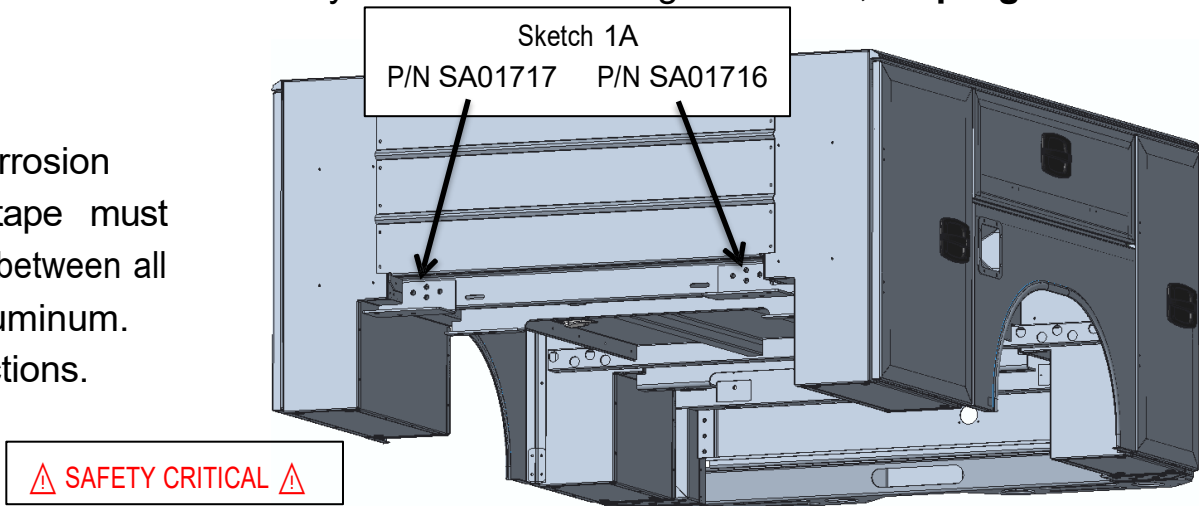
Flammable or Explosive.



Do not carry or store flammable or explosive liquids / gases in unventilated compartments. Vapors could cause fires or explosion.

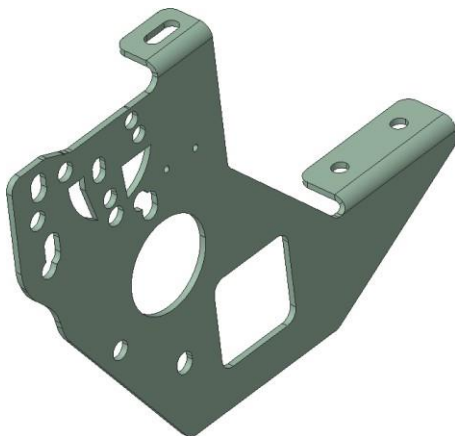
1. Locate the front mounting brackets shown in sketch 1A provided in the ship loose kit. Install the mounting brackets to the front crossmember using Qty 8, 1/2" flange head bolts P/N FA14226 and Qty 8 P/N FA14928 flange head nuts, **torquing to 90 ft-lbs.**

Note: Corrosion resistant tape must be applied between all steel to aluminum connections.

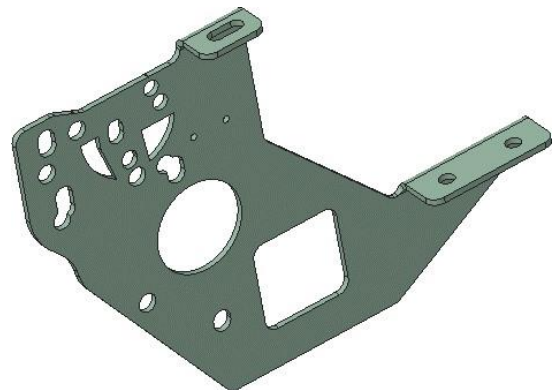


2. Install the rear universal mounting brackets loosely P/N SA01527 (curbside) and P/N SA01528 (roadside) to the chassis using provided 5/8" bolts P/N FA15236 and nuts P/N FA53012. The mounting holes for each chassis are different. See chassis specific mounting instructions. Note: Any bare metal resulting from frame or bracket modification must be painted before installing Renegade service body.

SA01528



SA01527



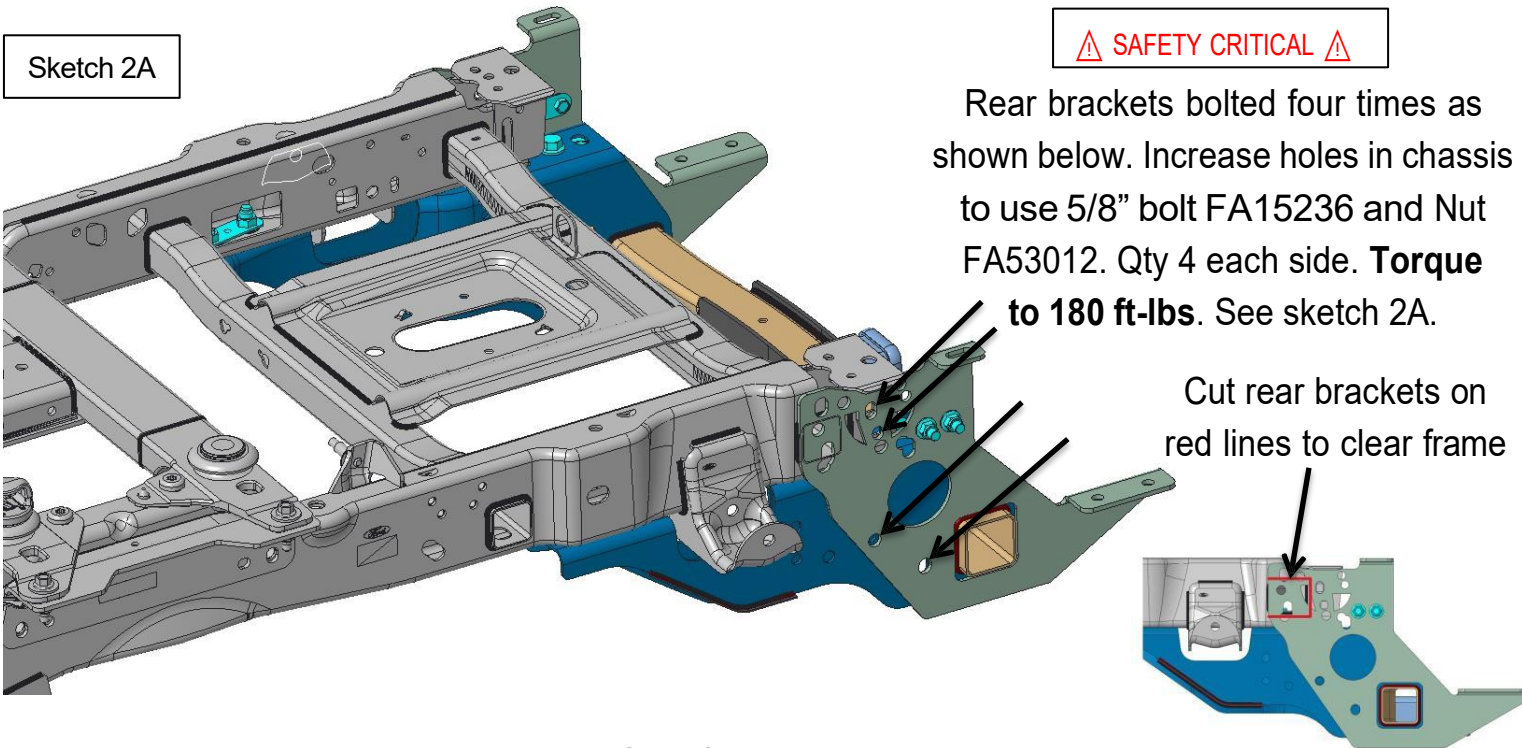
Ford Chassis

Ford Installation Notes

⚠ SAFETY CRITICAL ⚠

Rear brackets bolted four times as shown below. Increase holes in chassis to use 5/8" bolt FA15236 and Nut FA53012. Qty 4 each side. **Torque to 180 ft-lbs.** See sketch 2A.

Cut rear brackets on red lines to clear frame



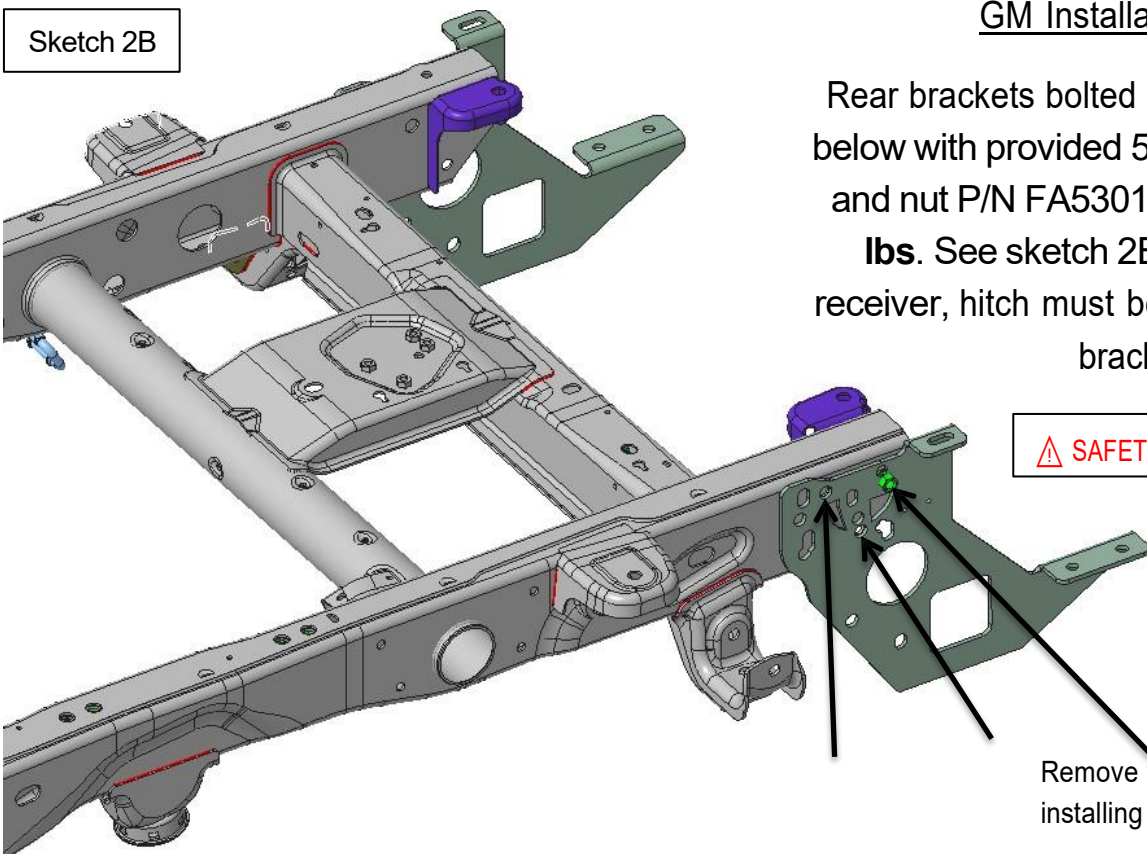
GM Chassis

GM Installation Notes

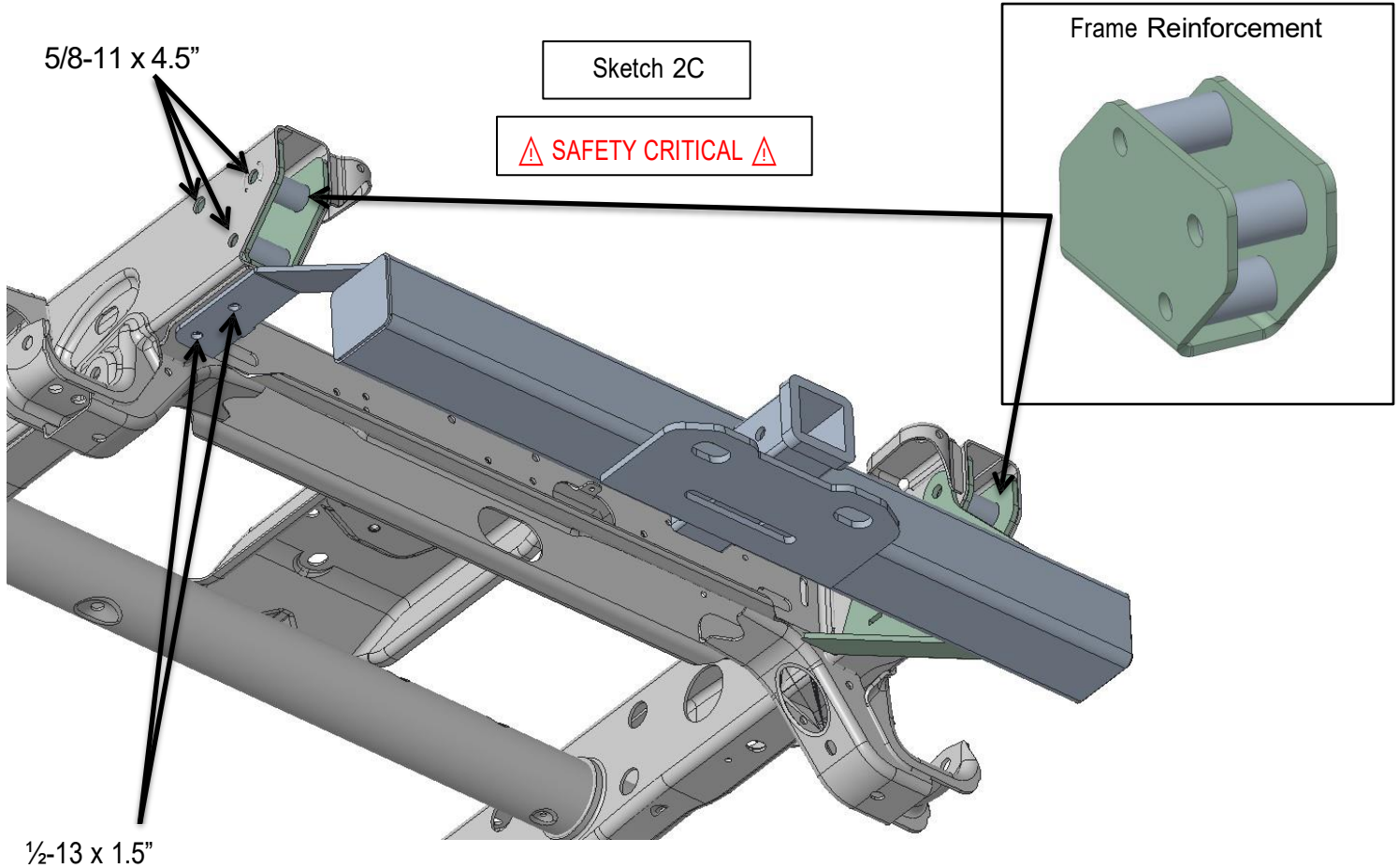
Rear brackets bolted three times as shown below with provided 5/8" bolt P/N FA15236 and nut P/N FA53012. **Torque to 180 ft-lbs.** See sketch 2B. If installing hitch receiver, hitch must be installed before rear brackets.

⚠ SAFETY CRITICAL ⚠

Remove weld nut before installing brackets.



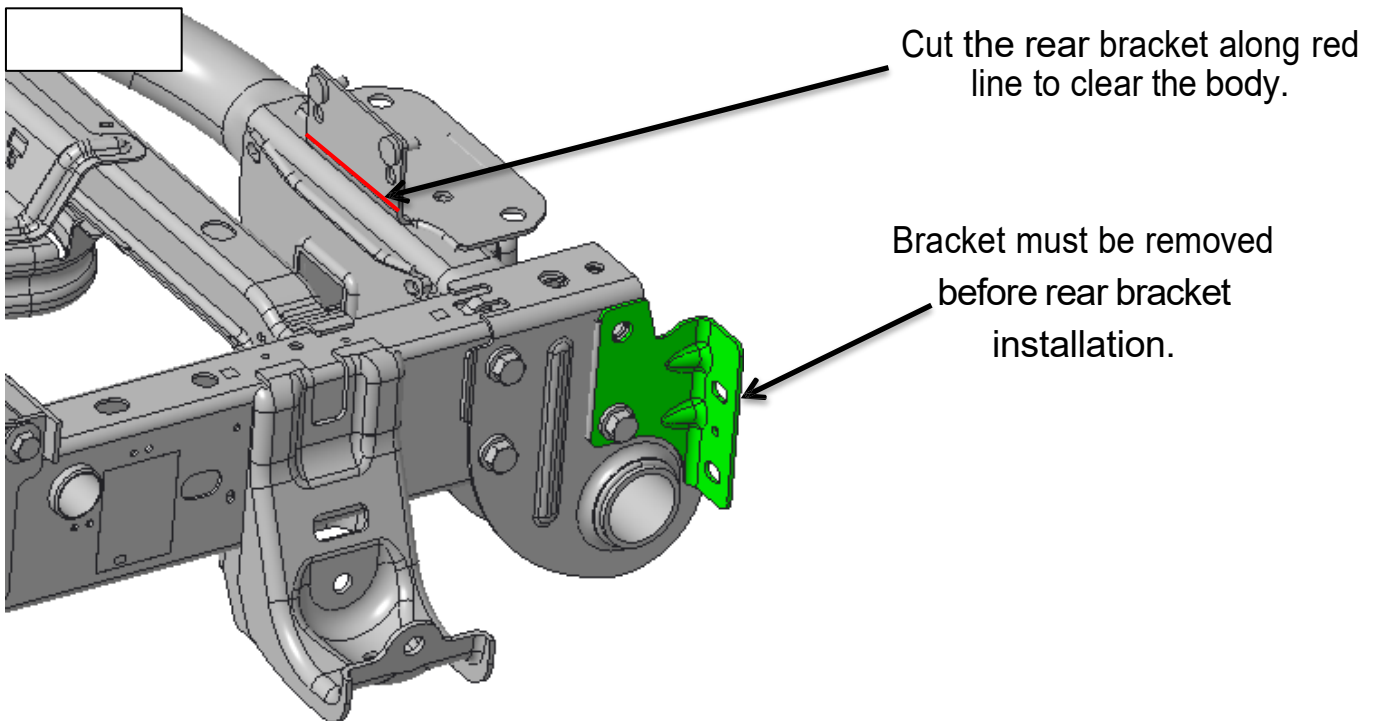
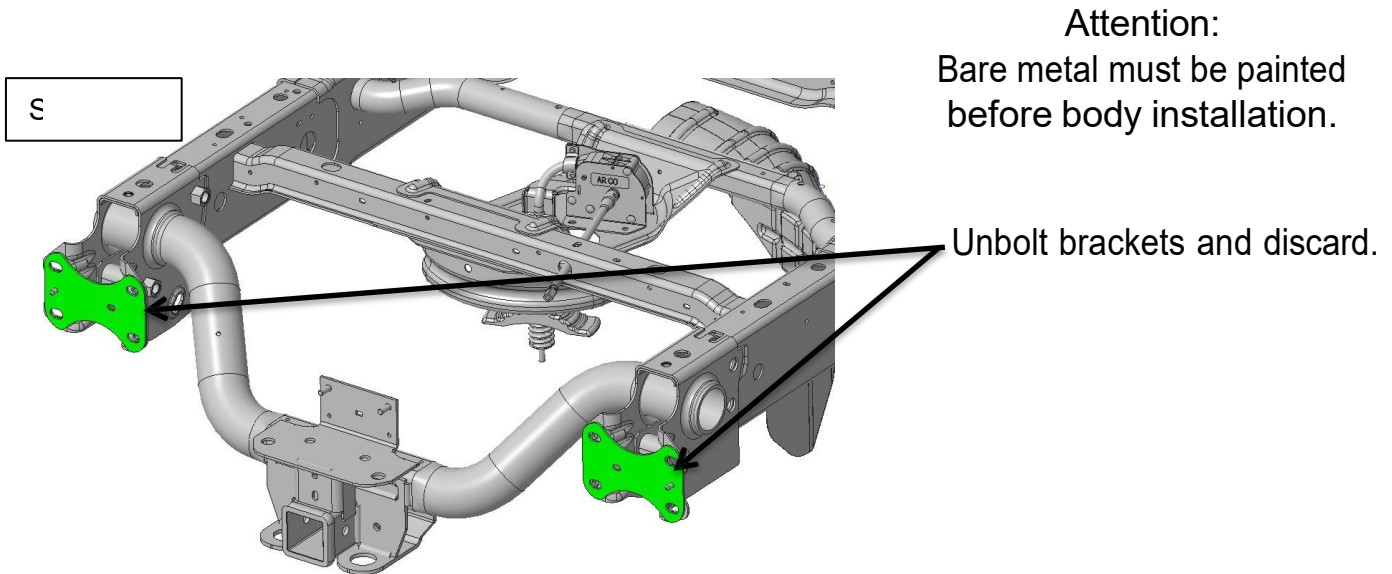
GM SA01287 Hitch Installation



- A. Place one frame reinforcement inside frame rail on each side.
- B. Loosely install hitch receiver SA01287 onto frame with 1/2-13 bolts into bottom of frame.
- C. Align rear brackets with holes on outside of frame and install with 5/8-11 x 4.5" bolts through frame reinforcements. 3x each side.
- D. **Torque 1/2-13 x 1.5" bolts to 90 ft-lbs.**
- E. **Torque 5/8" bolts to 180 ft-lbs.**

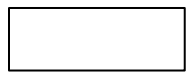
Ram Chassis

Note: Ram 2500 and Ram 3500 require frame modifications before rear brackets can be installed. See sketch G below.



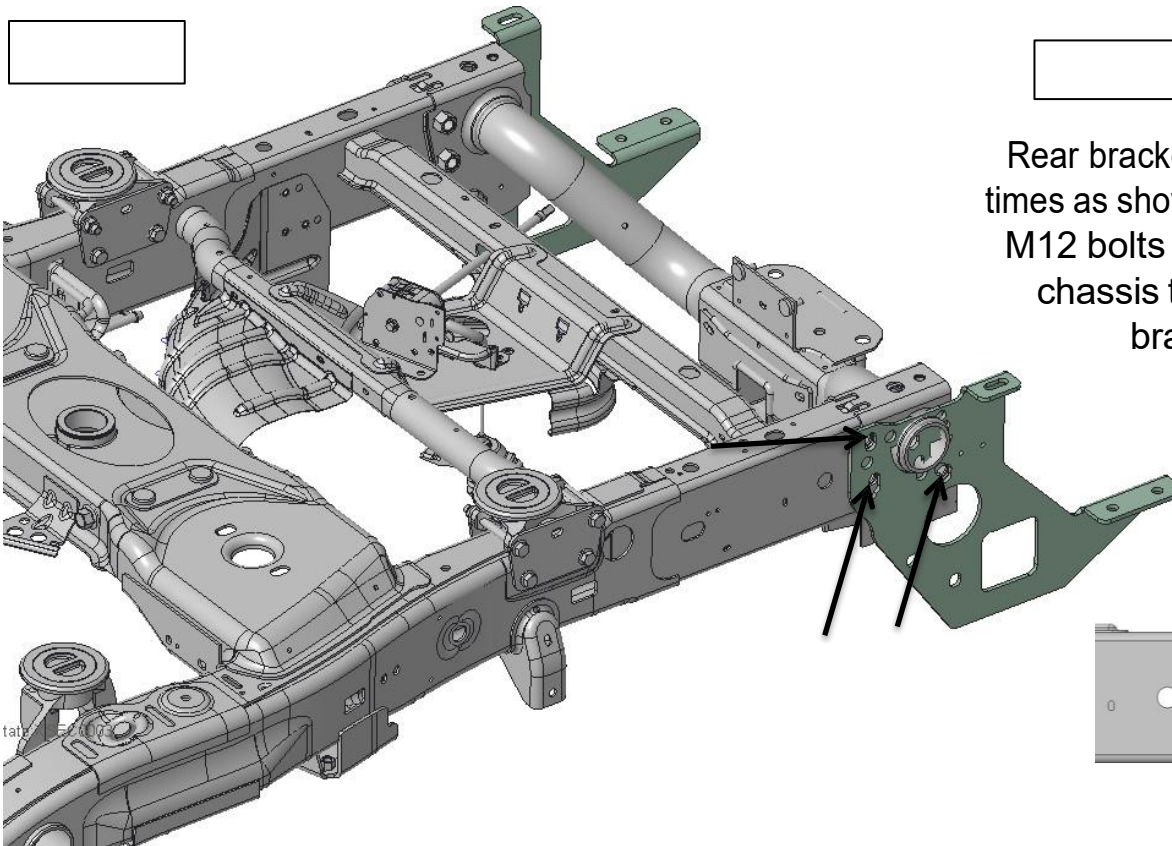
Ram 2500 Chassis

Ram 2500 Installation Notes

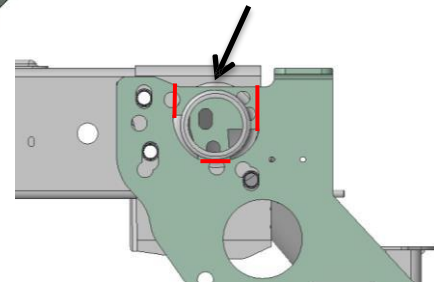


CRITICAL ⚠

Rear brackets bolted three times as shown below. Reuse M12 bolts removed from chassis to install rear brackets.



Cut the rear brackets along the red lines to clear the frame

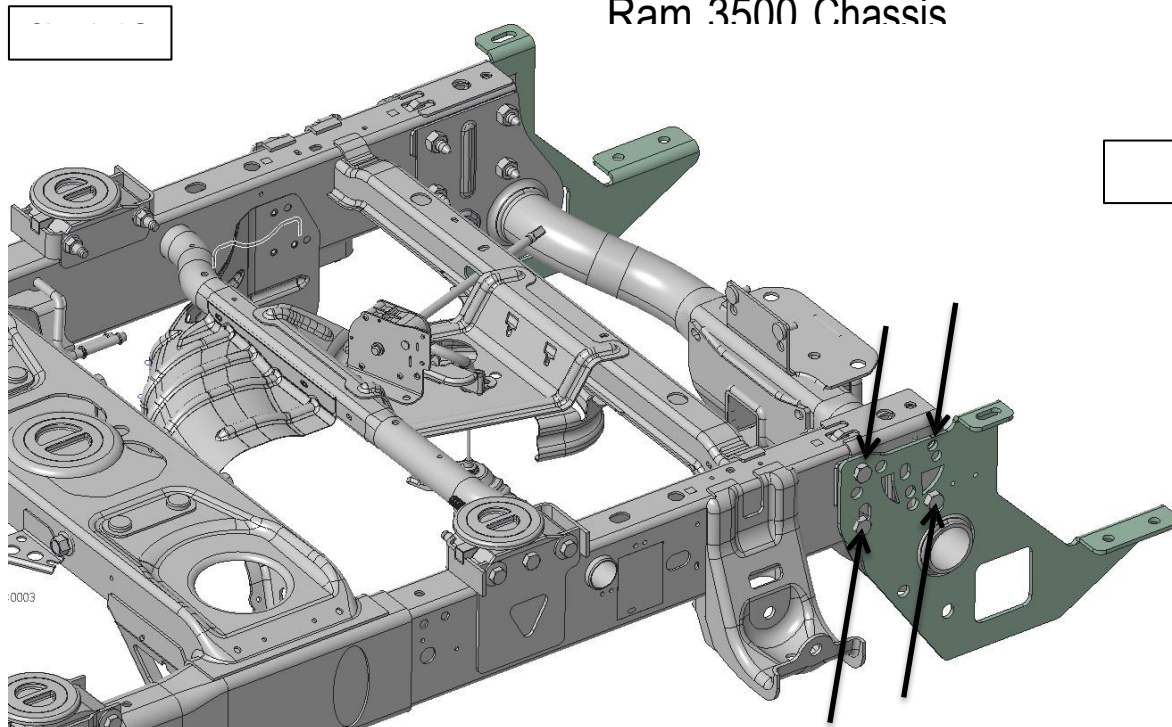


Ram 3500 Chassis

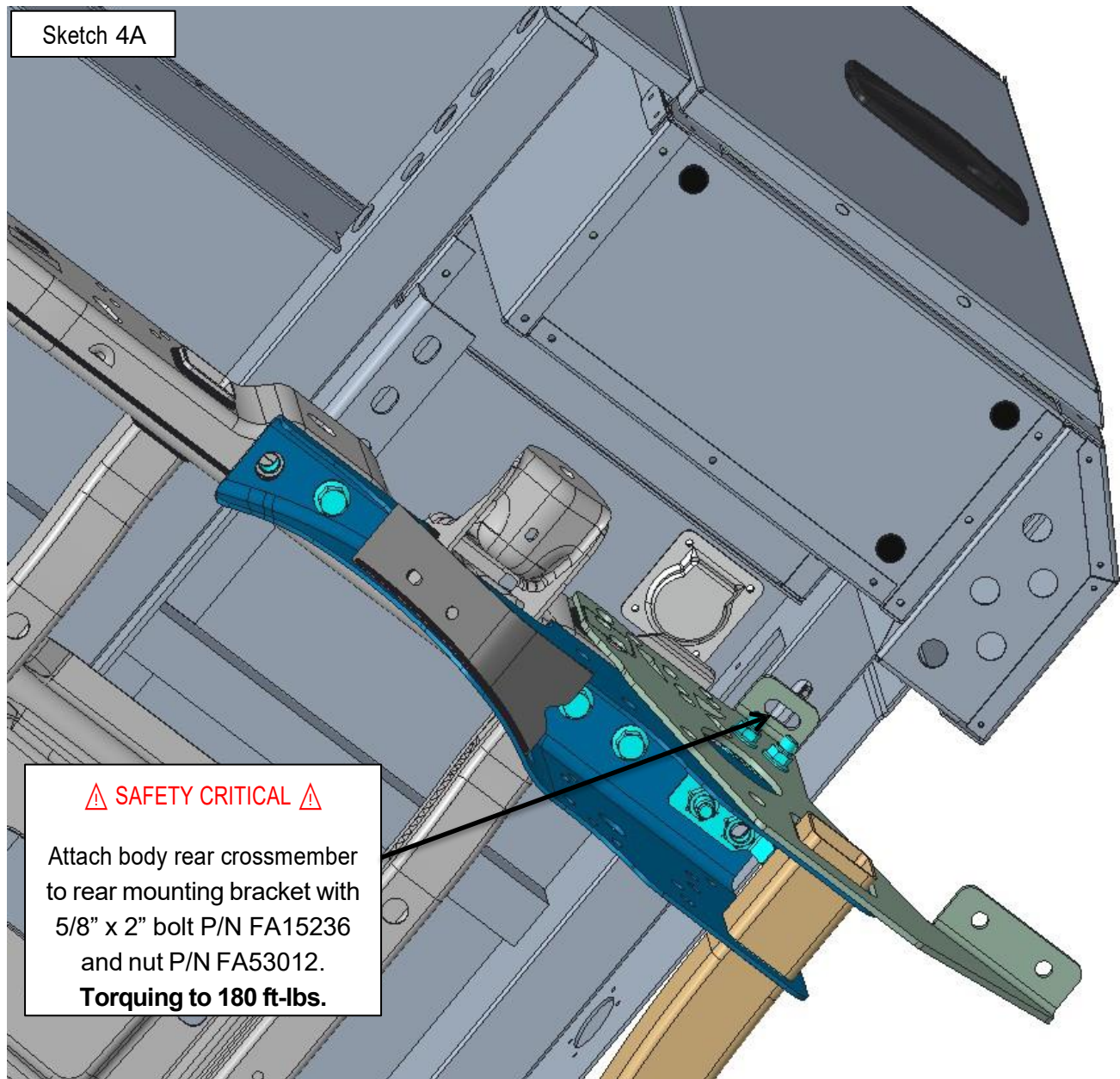
3500 Installation Notes

SAFETY CRITICAL ⚠

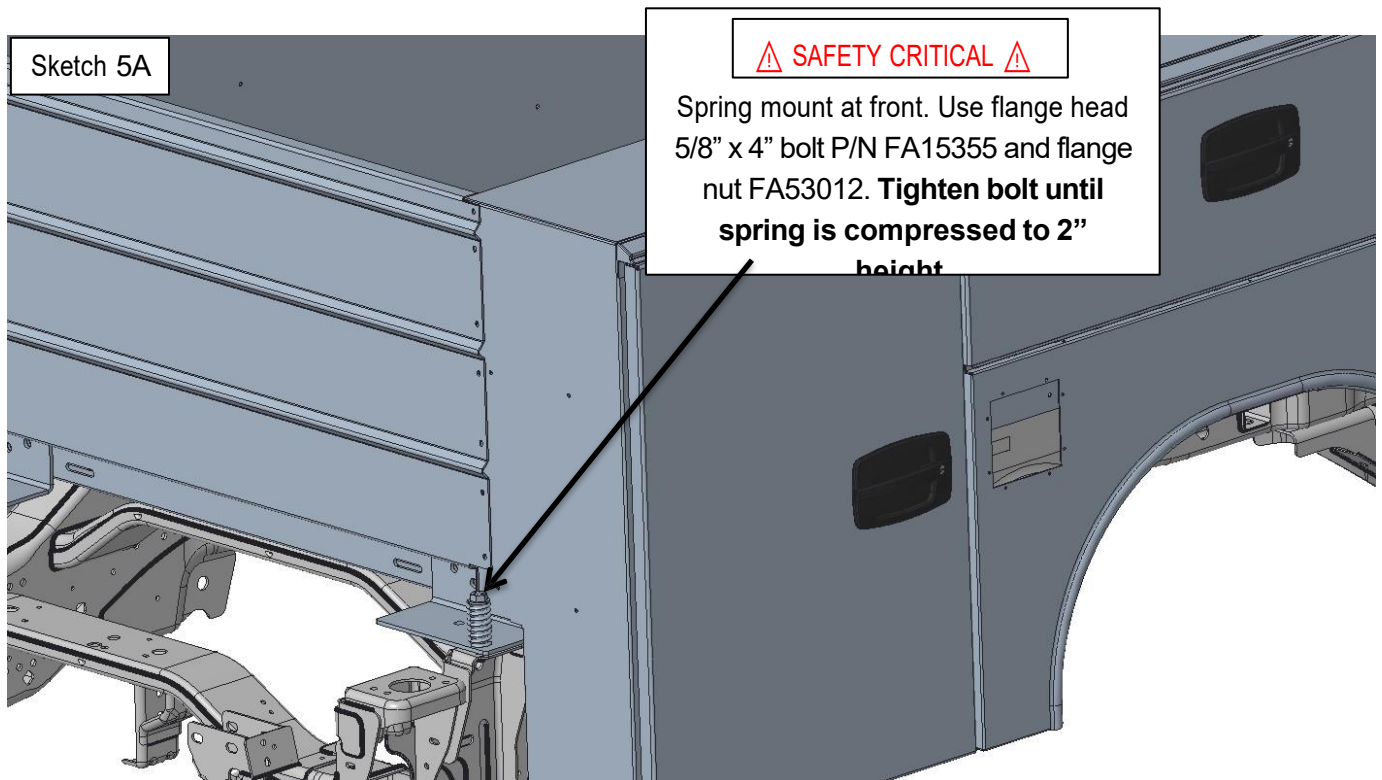
Rear brackets bolted four times as shown below. Reuse bolts removed from chassis to install rear brackets.



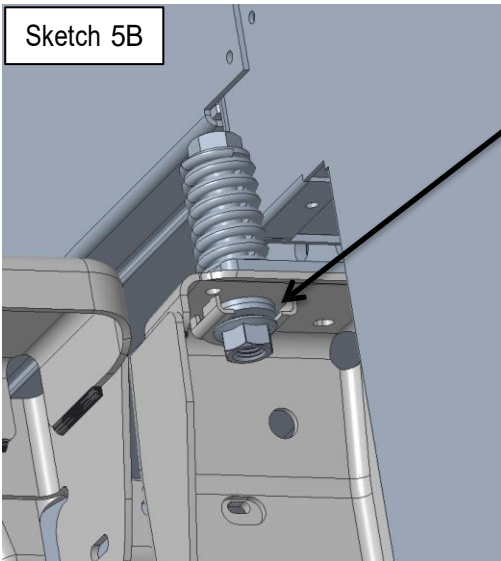
3. Pick up the body and place it on the chassis. The body may be picked up using the tie downs located in the cargo floor area.
4. Install the flange head 5/8" hardware to attach the body rear crossmember to the rear mounting brackets (sketch 4A). **Torque 5/8" bolts to 180 ft-lbs.** Ensure wiring harness inside rear crossmember is clear of bolts before tightening down.



5. The front of the body is spring mounted. Use the 5/8" bolts provided P/N FA15355. See sketch 5A. **Compress the spring to 2"**. The spring is typically located above the mounting bracket but can be located in the frame if necessary. For Ram, use the provided 3/16" shim P/N 2ALM187A06619 and 5/8" shim P/N 5AL03660A0002 stacked between the mounting bracket and the chassis stanchion. For GM, use provided 3/16" shim P/N 2ALM187A06619 between mounting bracket and chassis stanchion. The Ford chassis does not need to be shimmed. See sketch 5B and 5C for chassis specific frame modifications below.



Ford Front Chassis Mounting

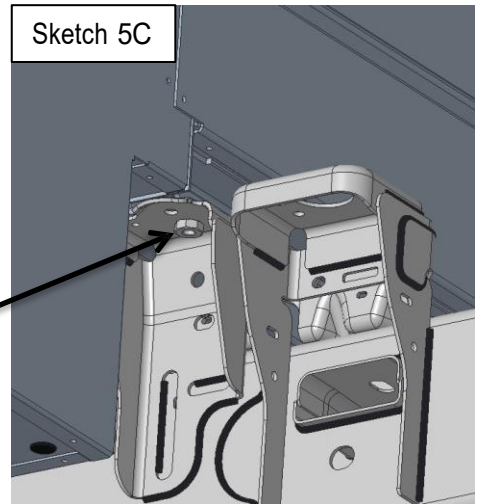


Sketch 5B

Add two 5/8" washers
P/N FA15115 inside nut
clip on bottom of road
side front stanchion
before installing 5/8"
flange nut P/N FA53012.

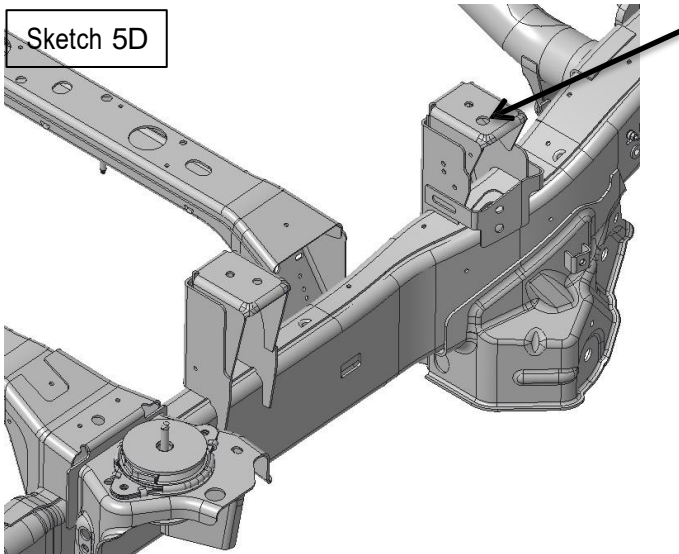
⚠ SAFETY CRITICAL ⚠

Drill out weld nut on
front curbside
stanchion for 5/8" bolt
P/N FA15355.



Sketch 5C

Ram 2500 & 3500 Front Chassis



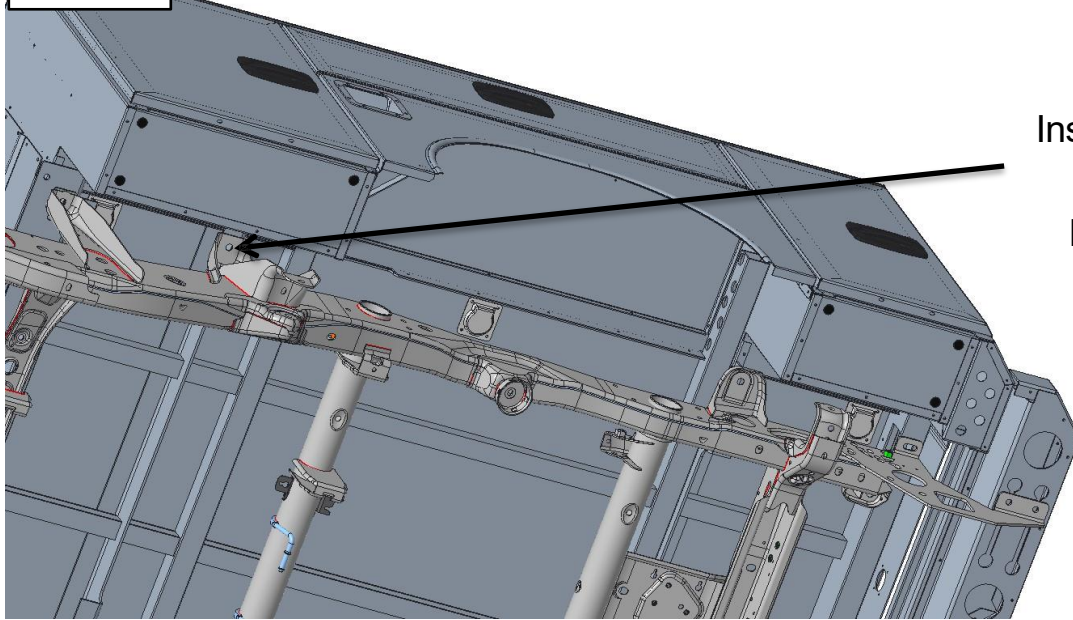
Sketch 5D

Drill out hole in front
roadside stanchion
for 5/8" bolt P/N
FA15355.

6. Bolt locations for each chassis are unique. Use provided flange head 5/8" bolts for chassis installation. **Torque 5/8" bolts to 180 ft-lbs.** See sketches and instructions below.
Note: Ford installations only, intermediate crossmembers are not bolted down.

GM Chassis

Sketch 6A



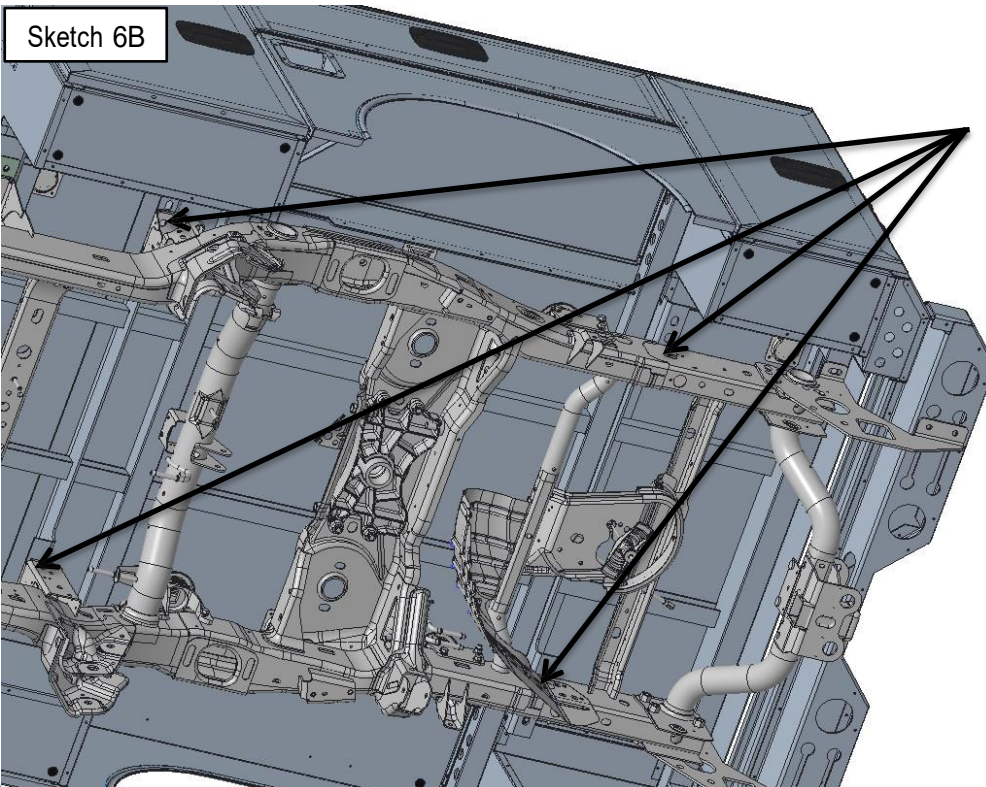
GM Chassis Installation Notes

⚠ SAFETY CRITICAL ⚠

Install provided 5/8" bolt P/N FA15236 and nut P/N FA53012 on both sides of front intermediate crossmember.

RAM Chassis

Sketch 6B



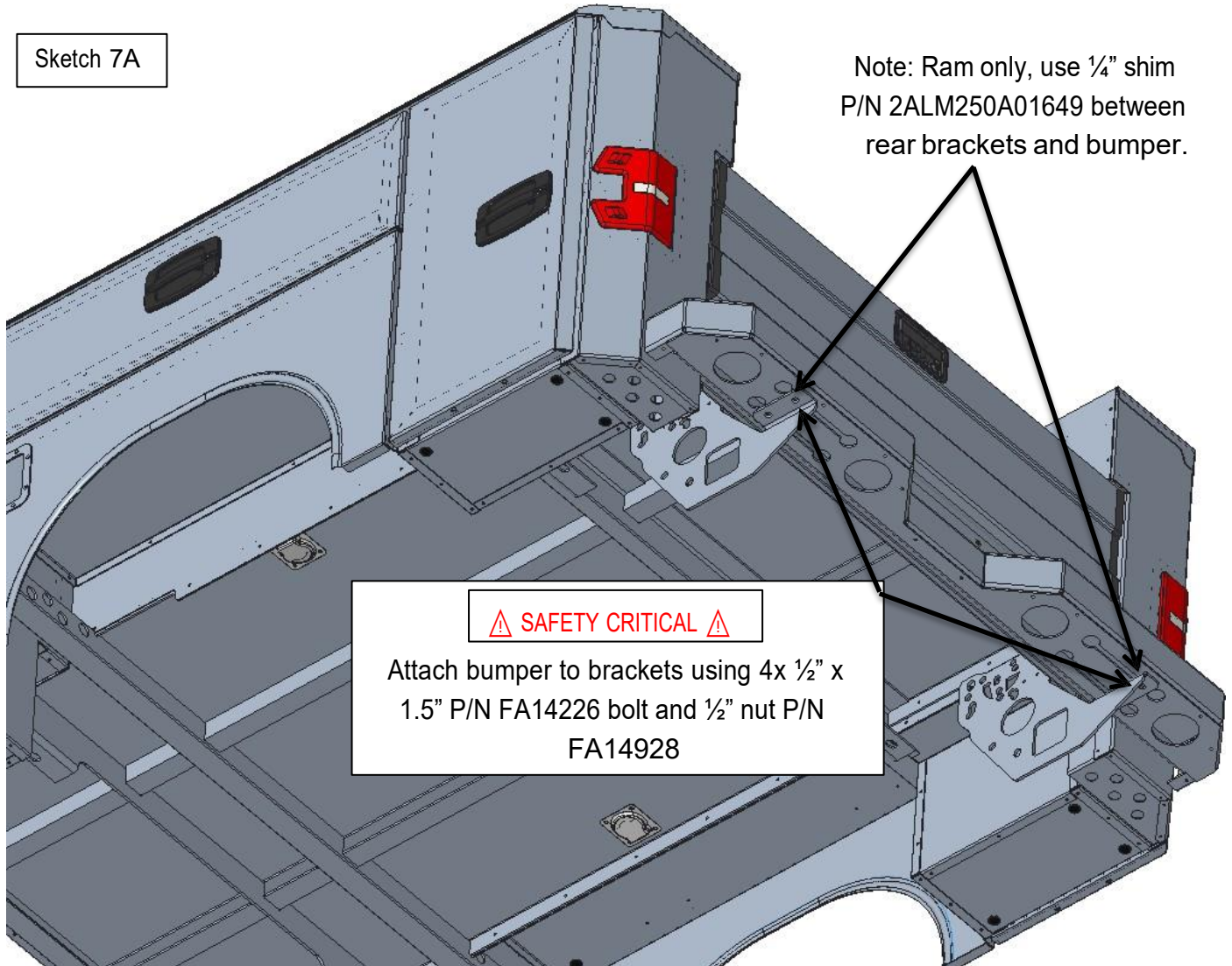
Ram Chassis Installation Notes

⚠ SAFETY CRITICAL ⚠

Install provided 5/8" bolt P/N FA15236 and nut P/N FA53012 on both sides of front and rear intermediate crossmembers.

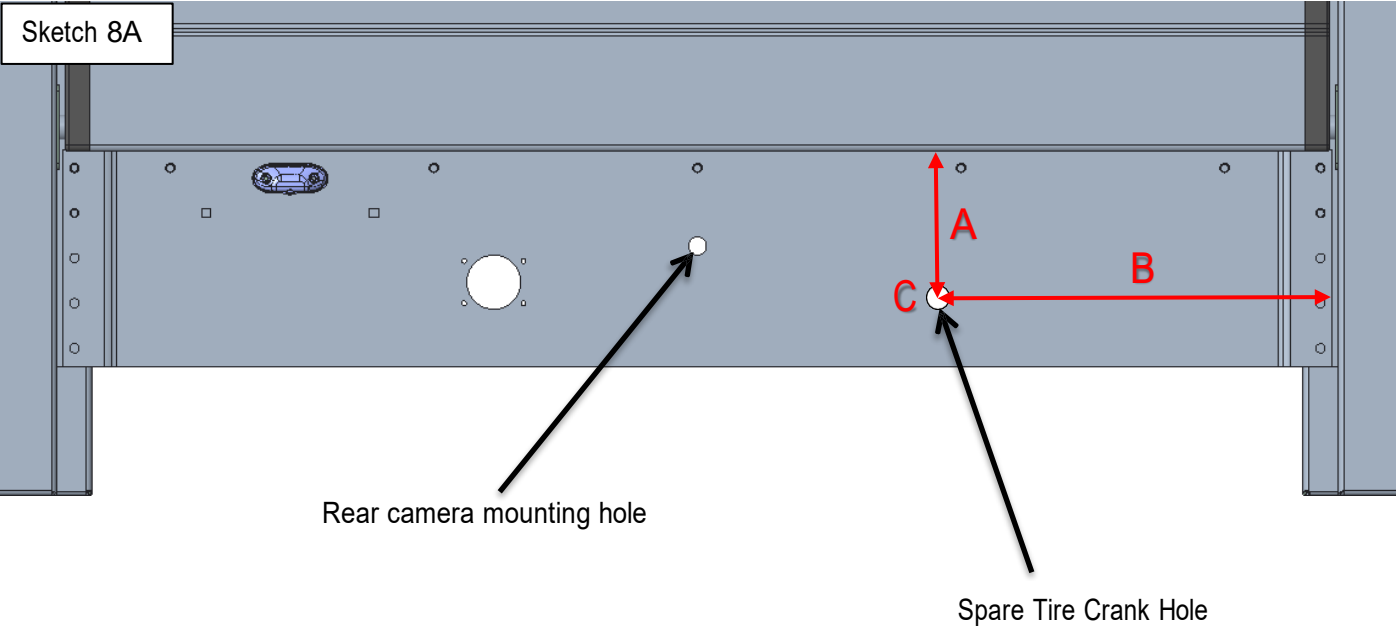
7. Mount bumper to brackets using the flange head $\frac{1}{2}$ " hardware provided. **Torque $\frac{1}{2}$ " bolts to 90 ft-lbs.** Refer to Sketch 7A. For Ram installations, bumper must be spaced up

Sketch 7A



8. The rear backup camera is reused from the OEM body. Remove factory camera and sensors from tailgate before removing bed from chassis. Install rear camera in 3/4" hole in center of Renegade valance. See sketch 8A below. For Ford and Ram, bracket 2ALM080A05006 is used to install the camera. Install camera into 2ALM080A05006 and fasten assembly to valance with 2x 3/16 SS pop rivets, ensuring camera is lined up with the 3/4" hole in valance. GM camera mounts directly to rear valance.

Note: to turn off reverse guidance lines in dash display, contact OE dealer.



9. The spare tire crank down access hole must be drilled in the rear valance. Ford, GM, and Ram have various locations. See sketch 8A above and chart 9A for chassis specific hole measurements.

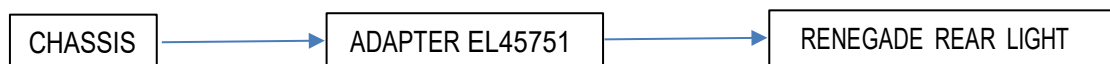
Chart 9A			
	Dimension A	Dimension B	Dimension C
Ford			
GM			
Ram			

10. The Renegade body comes pre-wired and ready to connect to Ford, Ram, and GM chassis. Renegade to chassis connections are OEM specific. Ford, Ram, and GM have specific adapter harnesses. See chassis specific wiring instructions below.

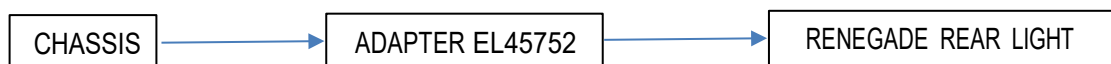
11. For strobe functionality in the rear taillights, locate the red wire (strobe) at the rear of the Renegade body. This red wire is routed to the front of the truck and connected to an auxiliary switch in the truck.

Ford

Ford 2019-2022



Ford 2023-PRESENT

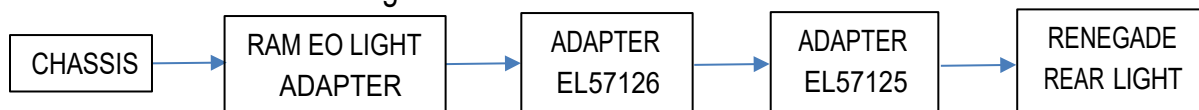


Ram

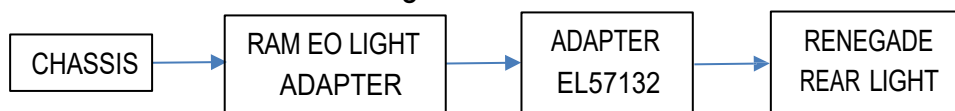
Ram chassis will either come with LED or non-LED rear taillights. See specific wiring instructions below.

Note: Ram OEM rear light adapter is unplugged and reused from Ram bed lights.

Ram 2023-PRESENT LED Taillights



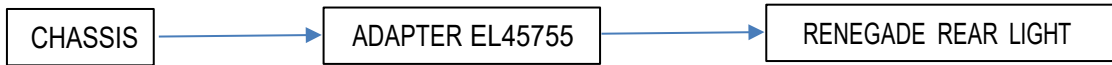
Ram 2019-2023 Non-LED Taillights



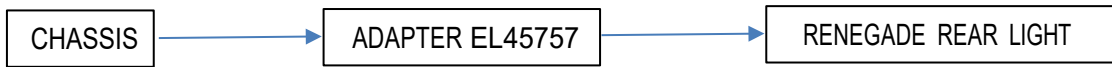
Note: For proper taillight function, Ram trucks must be reprogrammed ('flashed') by an authorized OEM dealer after installation.

GM

GM 2020-2023

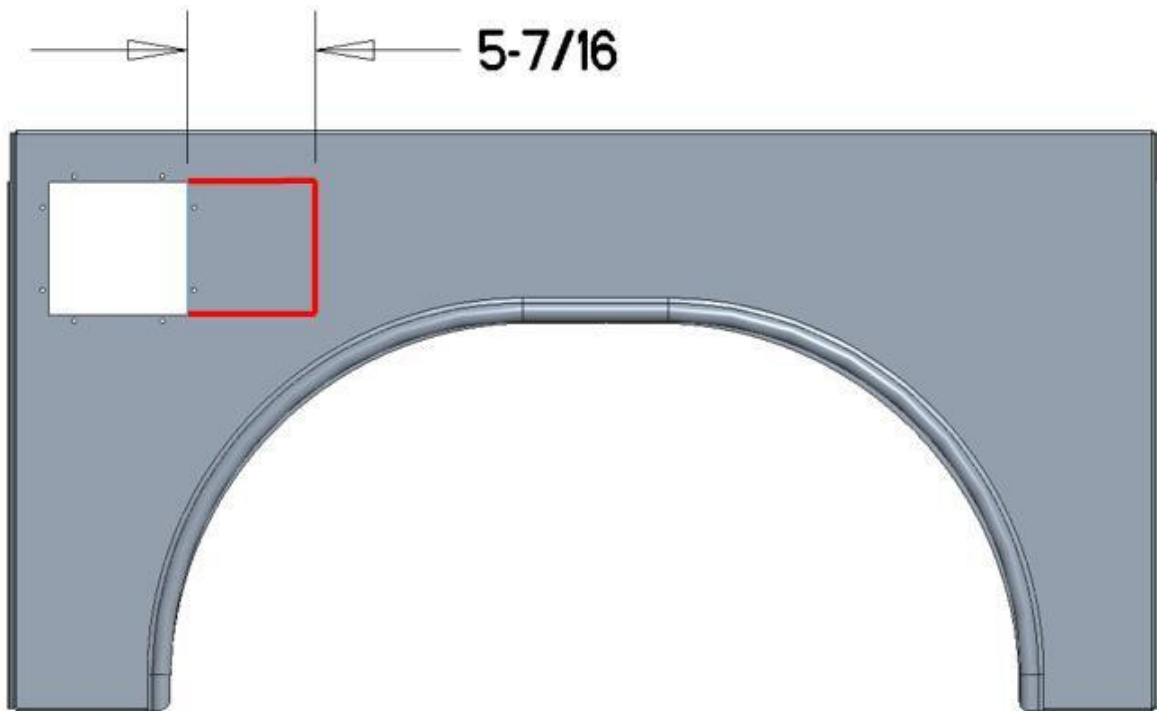


GM 2024-PRESENT



11. The fuel fill is installed in the roadside fender. For single fill installation, P/N AL63118 is used. To add a DEF fill, P/N HW80205 is required. The fuel fill housing is installed with provided 3/16" fasteners P/N FA20020. Dual fill P/N HW80205 requires the fender to be modified. See sketch 11A below. Cut fender along red lines.

Sketch 11A



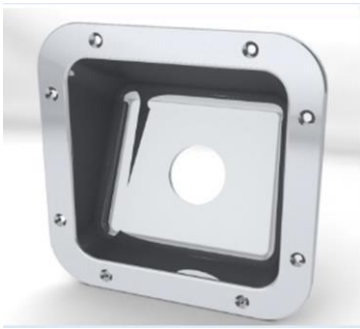
12. Parts Index

Fasteners - Included

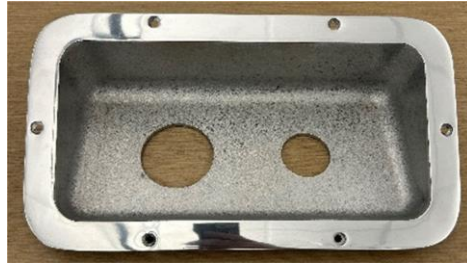
- (2) FA15355: 5/8-11 X 4" GR8 FLANGE BOLT
- (12) FA15236: 5/8" X 2" GR8 FLANGE BOLT
- (2) FA15115: 5/8" GR8 WASHER SAE
- (14) FA53012: 5/8" GR8 NYLOK FLANGE NUT
- (2) HW10600: DIE SPRING RED/WHITE 1-1/4" X 2-1/2"
- (12) FA14226: 1/2-13 X 1.5" GR8 FLANGE BOLT
- (12) FA14928: 1/2-13 X 1.5" GR8 FLANGE LOCK NUT
- (8) FA20020: 3/16" AL POP RIVET, 0.375 – 0.500 GRIP RANGE

Fuel Fill Guard

P/N AL63118 – (1) **Included**

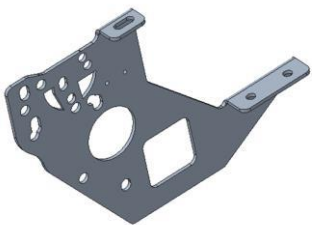


P/N HW80205 – **Sold Separately**



Mounting Brackets - Included

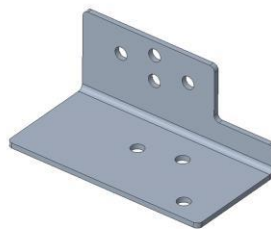
P/N SA01527



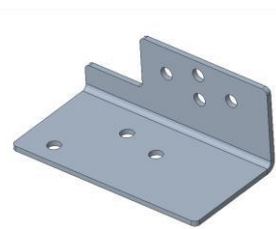
P/N SA01528



P/N SA01716

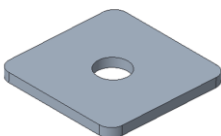


P/N SA01716

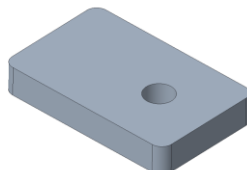


Shims - Included

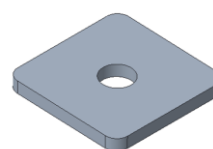
P/N 2ALM187A06619



P/N 5AL03660A0002

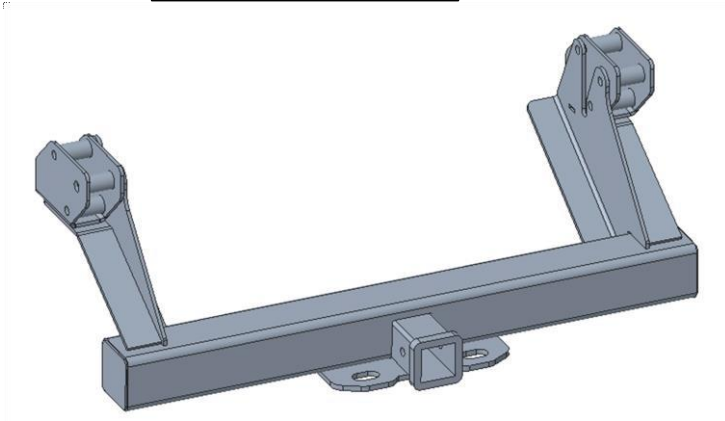


P/N 2ALM250A01649



GM Hitch Receiver 20K Tow Rating – Sold Separately, required for 2020 – Present GM

P/N SA01287

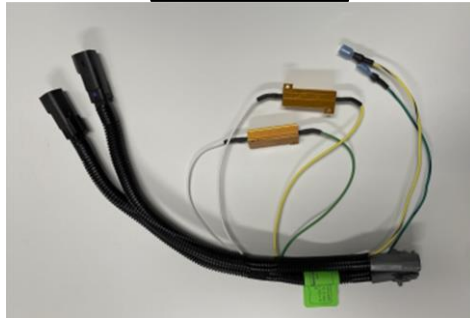


Wiring Harness Adapters – Sold Separately

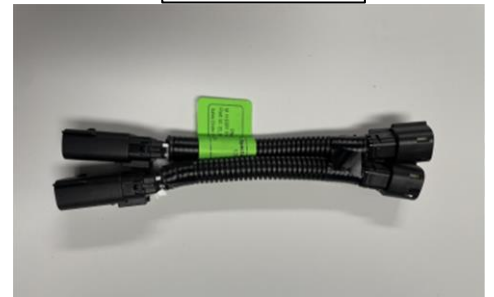
P/N EL45751



P/N EL57125



P/N EL57126



P/N EL45755



P/N EL45757



P/N EL45752

P/N EL57132

Torque Chart

Bolt Size	Torque Value
1/2-13 Gr8 Hardware	90 ft-lbs
5/8-13 Gr8 Hardware	180 ft-lbs

All torque values apply to clean, dry threads unless otherwise noted.