

NIMALI ILAROI HOUSE

NIMALI ILAROI HOUSE

WELCOME TO

# Ilaroi House

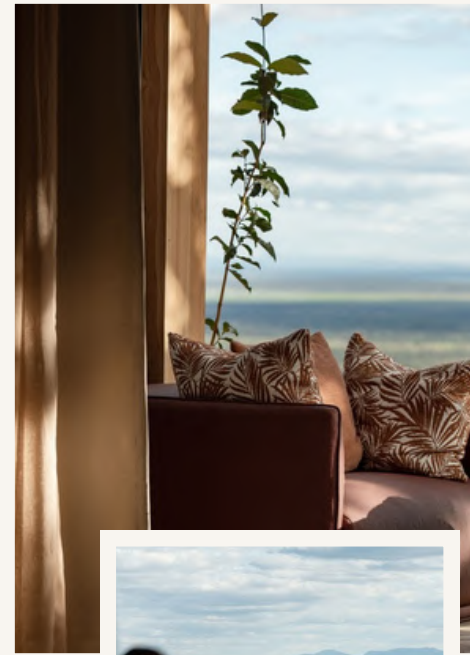
*Set high on a hill within a private conservancy bordering the eastern side of Tarangire National Park, Nimali Ilaroi House is a rare safari retreat where architecture, landscape, and experience exist in perfect balance. Designed for exclusive use, the house offers complete privacy, uninterrupted views, and a deeply personal connection to the land. Guests enjoy exclusive access to 10,000 acres of pristine wilderness reserved solely for their family and friends, ensuring exceptional wildlife encounters without the presence of other vehicles.*

NIMALI ILAROI HOUSE

NIMALI ILAROI HOUSE

# ILAROI House

*Here, luxury is defined not by excess, but by space, stillness, and the freedom to experience Africa entirely on your own terms.*



# NIMALI ILAROI HOUSE

## ILAROI HOUSE AT A GLANCE

Exclusive-use private residence in the wilderness

Fully staffed, bespoke safari experiences

Set within a private 10,000-acre conservancy

Infinity pool, hot tub & elevated roof deck

## A SAFARI EXPERIENCE, ENTIRELY YOUR OWN

Nimali Ilaroi House is available exclusively for private use, accommodating up to ten guests across five elegant suites.

Ideal for families, friends travelling together, or intimate celebrations, the house offers the flexibility and comfort of a private residence, combined with the service and expertise of a refined safari experience.

Set within a private 10,000-acre conservancy, guests enjoy exclusive access to pristine wilderness bordering Tarangire National Park, renowned for its dramatic landscapes and abundant wildlife.



# NIMALI ILAROUI HOUSE



## ARCHITECTURE SHAPED BY THE LAND

The design of Nimali Ilaroui House is shaped by the surrounding landscape. Curved walls follow the natural contours of the hill, allowing the structure to blend effortlessly into its surroundings while drawing inspiration from the timeless forms of African architecture.

Rather than dominating the landscape, the house appears to emerge from it, creating a powerful sense of place and connection to its natural setting.

Generous living spaces frame sweeping views across the plains, drawing the outdoors in and creating an atmosphere that is both expansive and serene.

*The design of Nimali Ilaroui House is dictated by the topography itself.*



# NIMALI ILAROI HOUSE



## REFINED LUXURY, ROOTED IN PLACE

The interiors balance sophistication with comfort, creating a warm and inviting atmosphere that feels both refined and lived-in.

Contemporary design is layered with rich, tactile materials and authentic African influences, including beading, woven grasses, natural textiles, leather, bone, sustainably sourced natural horn, and sculptural elements, complemented by a modern interpretation of classic campaign furniture.

Every detail has been carefully considered to celebrate craftsmanship, texture, and timeless elegance.



# NIMALI ILAROI HOUSE

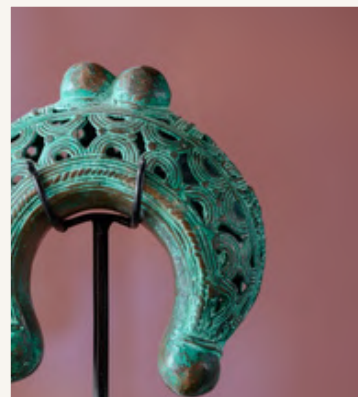
## A PALETTE DRAWN FROM THE LANDSCAPE

Colour at Nimali Ilaroi House is deliberate and deeply connected to its surroundings.

Earthy tones reflect the sandy hues of sun-dried grasses, the rich red soil revealed after rain, the fertile dark soils of the plains, and subtle shades of green inspired by the indigenous trees that dot the landscape.

These colours are woven throughout the architecture and interiors, creating a cohesive design language that seamlessly connects the house to the natural environment beyond.

*Earth-born architecture, sweeping views, and moments of quiet awe.*



# NIMALI ILAROI HOUSE

## SPACES DEIGNED FOR GATHERING

The heart of Nimali Ilaroi House is designed for connection, relaxation, and shared experiences.

Generous living and dining spaces flow seamlessly onto expansive terraces overlooking the plains, while the interactive kitchen invites guests to engage with the culinary journey. A curated wine cellar, cigar lounge, and rooftop deck provide intimate settings to unwind throughout the day and into the evening.

Outdoors, a rim-flow infinity pool, hot tub, traditional boma, fire pit, and suspended hammocks offer ever-changing vantage points from which to take in the surrounding wilderness, from sunrise to starlit skies.



## FIVE PRIVATE SUITES

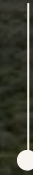
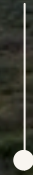
Each of the five spacious guest suites is inspired by the African landscape and designed as a private sanctuary. Each suite features a king-size bed, a bathtub, an indoor shower, a private terrace, and uninterrupted views across the surrounding wilderness. Select suites also offer outdoor showers, allowing guests to fully immerse themselves in their natural surroundings.

## A PRIVATE HOME WITH WORLD-CLASS SERVICE

Nimali Ilaroi House is supported by a dedicated team of experienced hospitality professionals, including chefs, housekeepers, guides, and managers with deep knowledge of the region. Service is intuitive, personalised, and attentive, ensuring every stay feels effortless and uniquely tailored to each guest.

## LUXURY WITH PURPOSE

Sustainably built and thoughtfully designed, Nimali Ilaroi House is environmentally conscious in its design and operations. The house blends seamlessly into its environment while offering a meaningful and responsible safari experience. It is powered entirely by solar energy, reflecting its commitment to reducing environmental impact.



NIMALI ILAROI HOUSE



NIMALI ILAROI HOUSE

**WHERE THE EARTH MEETS THE SKY**

*At Nimali Ilaroi House, privacy, design, and wilderness converge,  
creating a place that feels both grounding and extraordinary.*

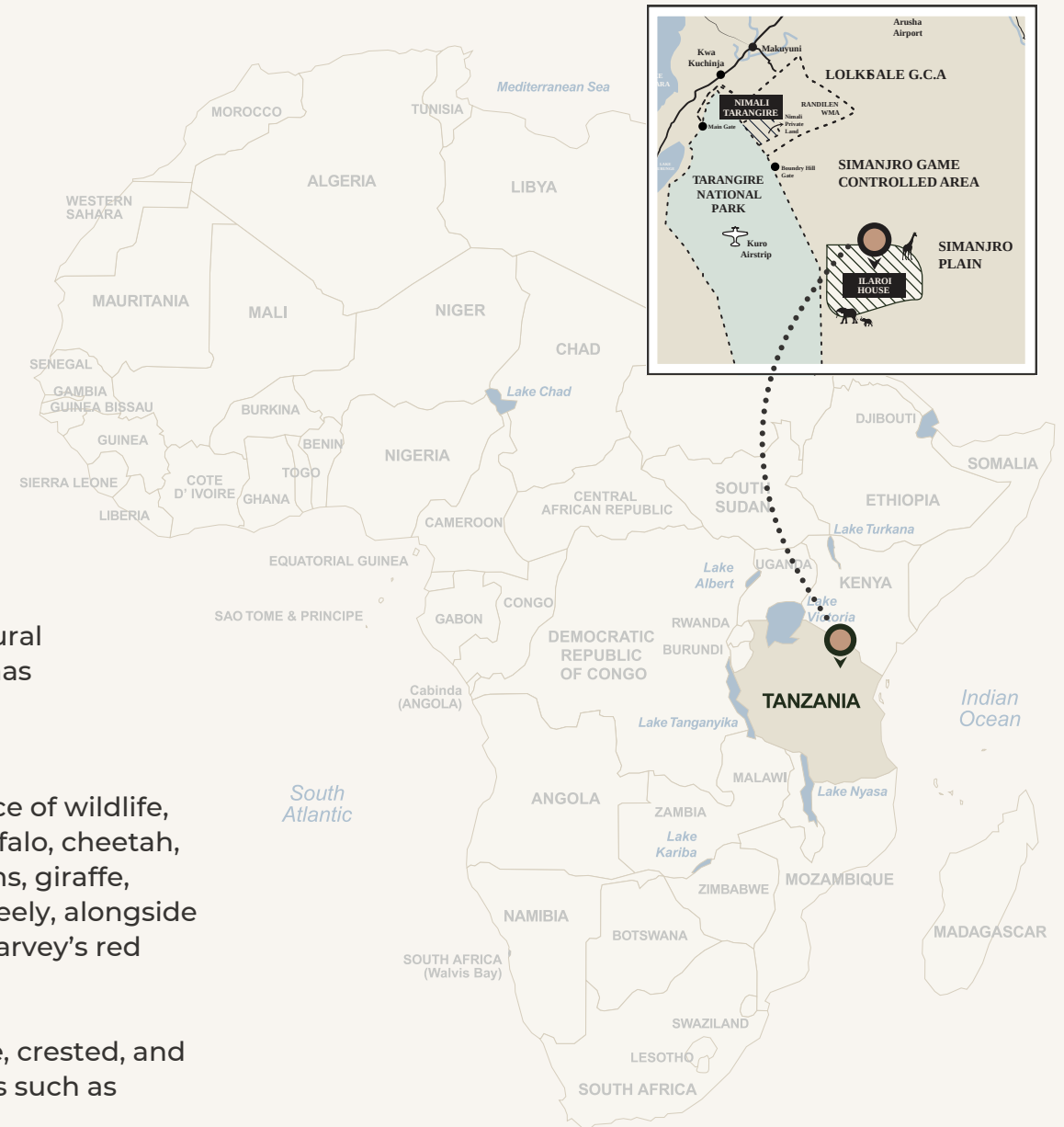
# NIMALI ILAROI HOUSE

## LOCATION

Perched at 1,226 metres (4,025 feet) above sea level, Nimali Ilaroi House commands sweeping views across the vast Maasai Steppe. Located approximately 160 kilometres (99 miles) southeast of Arusha, the property sits within a private 10,000-acre conservancy, offering a rare sense of scale, solitude, and connection to the natural world. Its elevated position provides dramatic panoramas across the surrounding landscape.

The conservancy is home to an extraordinary abundance of wildlife, with thriving populations of lion, leopard, elephant, buffalo, cheetah, and the elusive striped hyena. Across its sweeping plains, giraffe, zebra, eland, oryx, kudu, and Coke's hartebeest roam freely, alongside smaller antelope such as dik-dik, suni, steenbok, and Harvey's red duiker.

The landscape is also rich in birdlife, including vulturine, crested, and helmeted guinea fowl on the ground, alongside species such as lilac-breasted rollers, bee-eaters, owls, and falcons.



# NIMALI ILAROI HOUSE

## GPS COORDINATES

<b>ILAROI PRIVATE AIRSTRIP</b>	S 04°23'05.9" / E 036°26'08.4"
<b>ILAROI HOUSE</b>	S 04.37742° / E 036.42257°

## WEATHER

Ilaroi House is a year-round destination. The months from **June to October** are typically dry and cool, offering particularly pleasant conditions. The area experiences two rainy seasons: the **short rains**, which usually occur from **late November to early December**, and the **long rains**, which generally fall **between late March and April**.

*For those seeking an even more exclusive arrival, helicopter transfers can also be arranged.*

## GETTING THERE

Nimali Ilaroi House is most easily accessed by private charter flight, offering a seamless and scenic arrival. The property is approximately a 20-minute charter flight from Arusha, landing at the Nimali Ilaroi private airstrip.

From the airstrip, the house is just a five-minute drive. Guests are personally met on arrival by a member of the Nimali Ilaroi team and transferred directly to the house.

Approximate charter flight times are as follows:

<b>ARUSHA AIRPORT</b>	20 minutes
<b>KILIMANJARO INTERNATIONAL AIRPORT</b>	20 minutes
<b>DAR ES SALAAM</b>	1 hour 30 minutes
<b>LAKE MANYARA</b>	15 minutes
<b>KURO AIRSTRIP</b>	10 minutes
<b>SERONERA AIRSTRIP</b>	45 minutes
<b>KOGATENDE AIRSTRIP</b>	1 hour

# NIMALI ILAROI HOUSE

## CONSERVATION, SUSTAINABILITY & COMMUNITY

At Nimali Ilaroi House, sustainability is woven into every aspect of what we do.

We work in close partnership with Maasai communities living on the outskirts of the conservancy to support a long-term rewilding approach that restores natural processes across the landscape while benefiting both people and wildlife. Nimali Ilaroi House operates within a conservancy supported by visitor fees, with 100% of the conservancy fee directed towards local education, community development, and wildlife initiatives.

By simply staying with us, guests actively contribute to vital efforts such

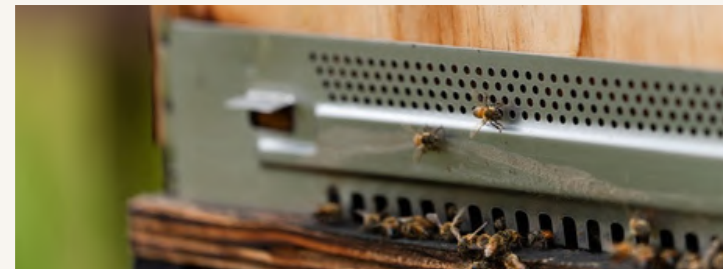
as protecting key wildlife migration corridors, monitoring lion prides to reduce human-wildlife conflict, and supporting surrounding schools. Working alongside local communities, this approach strengthens climate resilience and supports the regeneration of indigenous landscapes for future generations.

Our commitment to environmental responsibility is reflected in our daily operations. Nimali Ilaroi House harvests rainwater, is completely free of plastic water bottles, and is powered entirely by solar energy.

We also run a **beekeeping project** which supports biodiversity. Honey is harvested using responsible, non-destructive methods, and we actively share best practice with surrounding communities to support ethical beekeeping.

Guests staying at Nimali Ilaroi House are invited to enjoy the pure, local honey harvested directly from the land; an authentic taste of the ecosystem they are helping to restore.

Our **indigenous tree nursery** forms a core part of Nimali Ilaroi House's long-term rewilding strategy. By cultivating native acacia and baobab trees, the project supports habitat restoration, improves soil stability, and enhances biodiversity across the conservancy.



# NIMALI ILAROI HOUSE

Private Experiences at Ilaroi House



Private visits to a traditional Maasai boma	Maasai beading with local artisans
Community encounters rooted in conservation	Private helicopter excursions
Beekeeping and honey harvesting from the land	Open-fire wild cooking experiences
Bush dining in remote wilderness settings	Flower foraging walks
Sundowners at sunset, overlooking the conservancy	Sound healing in nature
Guided walking safaris	Private guided yoga sessions
Game drives by day and night	Painting inspired by the landscape
Photography lessons, camera hire, and curated photoshoots	Visit our indigenous tree nursery, supporting the restoration of native acacia and baobab trees
Community encounters, arranged with care and context	



# NIMALI ILAROI HOUSE

## Facilities

At Nimali Ilaroi House, comfort is intuitive and luxury understated, designed to enhance the sense of place rather than distract from it.

---

10,000 acres of private wilderness reserved exclusively for your family and friends

---

A deeply immersive wilderness retreat offering rest, renewal, and reconnection with nature, with five elegantly designed suites featuring uninterrupted panoramic views across the plains.

---

Expansive outdoor living areas with open-air fireplaces, suspended hammocks, courtyard dining, daybeds, and loungers, perfect for wildlife viewing and stargazing.

---

An infinity pool and hot tub positioned to overlook the landscape, ideal for quiet reflection and sunset swims.

---

A dedicated wellness space with a fitness studio, and restorative wellness experiences in nature, including guided yoga and meditation.

---

A discreet, attentive team consisting of a host, private guide, chef, housekeepers, and wellness specialist, with exclusive safari vehicles to ensure personalised service.

---





# NIMALI ILAROI HOUSE

## Facilities

---

An interactive kitchen and select bar-delis offering freshly prepared delicacies throughout the day.

---

A curated wine cellar featuring award-winning labels, with bespoke tastings available.

---

Private massage treatments offered on outdoor decks or within the privacy of each suite.

---

Spacious interior lounges with fireplaces, fully stocked bars, floor-to-ceiling windows framing the wilderness, and relaxed sitting areas for quiet moments or shared games.

---

A refined cigar lounge, with seamless access to television and Wi-Fi connectivity throughout the property.

---

Tailored private dining experiences available at any time and in any setting, alongside fully equipped kitchens focused on fresh, locally sourced ingredients.

---

NIMALI ILAROI HOUSE



NIMALI ILAROI HOUSE

# Ilaroi *House*

+255 758 311 750

[nimaliafrica.com](http://nimaliafrica.com)

[reservations@nimaliafrica.com](mailto:reservations@nimaliafrica.com)