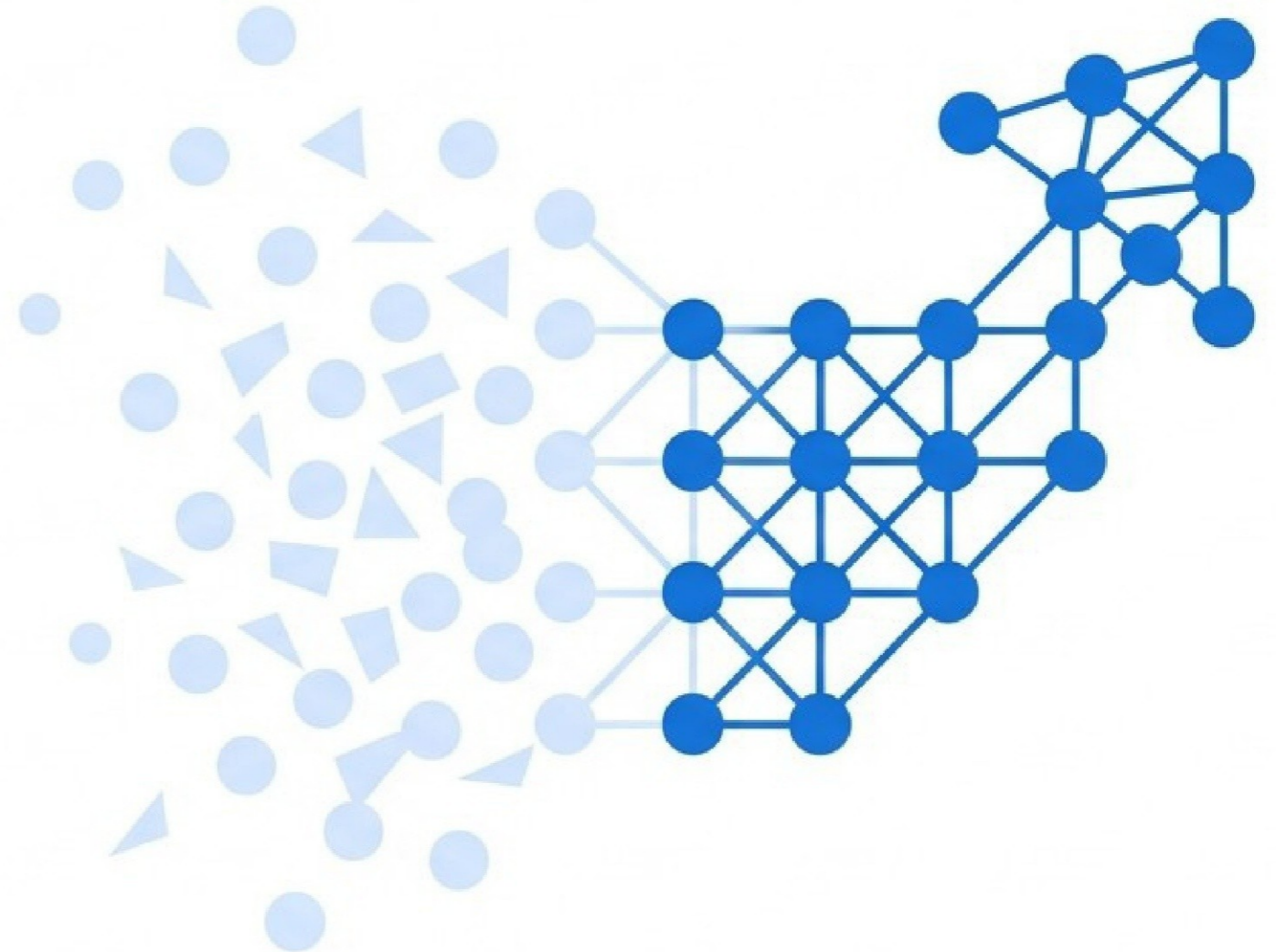
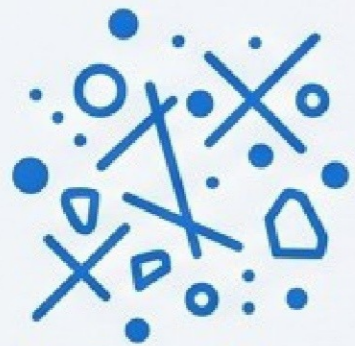


Big Data Analytics Corporate Training Course

Drive team excellence and transform complex datasets into strategic business decisions with expert-led training.



The Evolution of Enterprise Data Processing



Unmanageable Datasets

Organizations struggle with raw, siloed, and highly complex data volumes lacking structural clarity.



Advanced Analytics Adoption

Implementation of Hadoop ecosystems and robust ETL processes to extract actionable intelligence.



Strategic Advantage

Teams leverage data-driven insights to predict market trends, streamline processes, and drive bottom-line impact.

Program Delivery Framework



32 - 40
Hours



Instructor-Led
Group Training



Virtual, On-site,
or Off-site



10,000+
Trainers
Globally



Course
Completion
Certificate

The Capability Activation Curve



Foundational Knowledge.
Basic understanding of
data analysis concepts and
familiarity with statistical
methods.

Master Hadoop
daemon processes
and distributed file
system architectures.

Configure local and
distributed storage
environments for big
data processing.

Leverage extended
ecosystems including
Hive, Pig, and HBase
for data warehousing.

Execute advanced
data extraction and
transformation using
Pentaho ETL tools.

Derive actionable insights and
create predictive models for
high-level organizational
decision-making.

Structured Knowledge Integration

Phase 1: Storage Foundations

Modules 1-4

Focuses on the characteristics of big data, daemon processes, and Hadoop Distributed File System (HDFS) architecture.



Phase 2: Ecosystem Development

Modules 5-6

Equips developers with tools to utilize Hive, Pig, and HBase for comprehensive data warehousing and NoSQL storage.

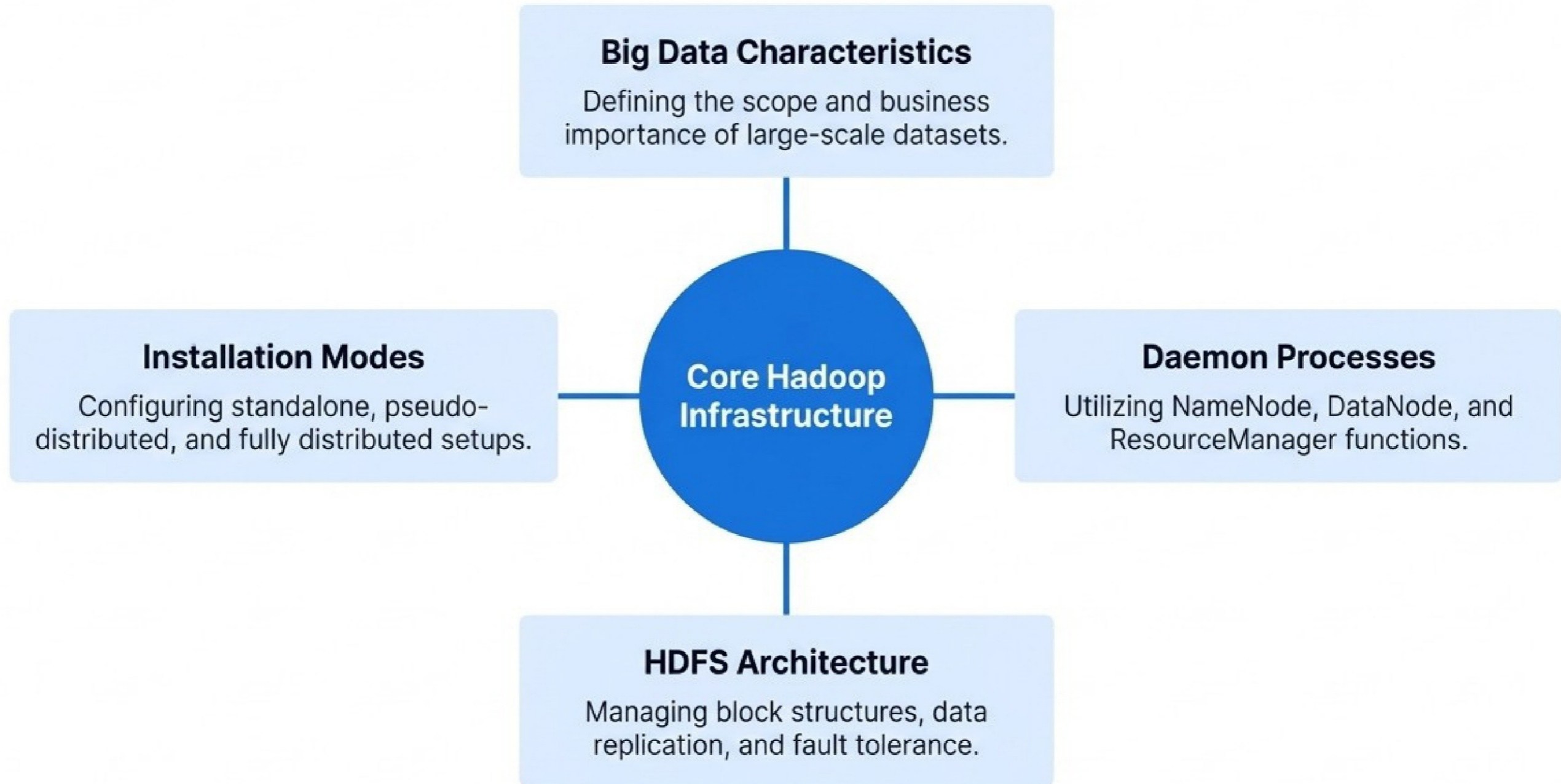


Phase 3: Analytics and Integration

Modules 7-8

Covers data extraction, transformation with Pentaho ETL, and integrating Hadoop with external enterprise technologies.

Phase 1: Storage Foundations



Phase 2: Ecosystem Development

Traditional



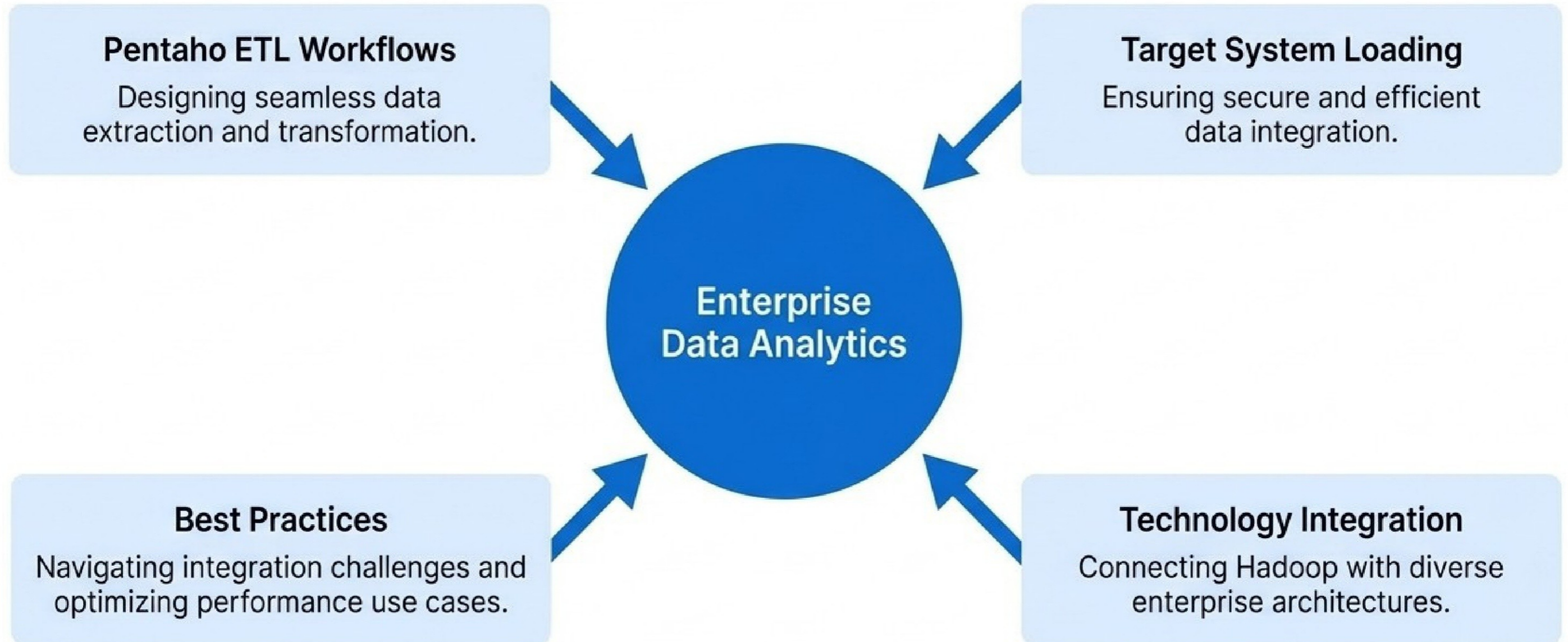
Course-Enabled



Ecosystem Tools

- **Hadoop Developer IDEs:** Establishing robust development environments.
- **Hive Data Warehousing:** Querying large datasets securely.
- **Pig Data Processing:** Executing complex data transformations.
- **HBase NoSQL Storage:** Managing non-relational distributed databases.

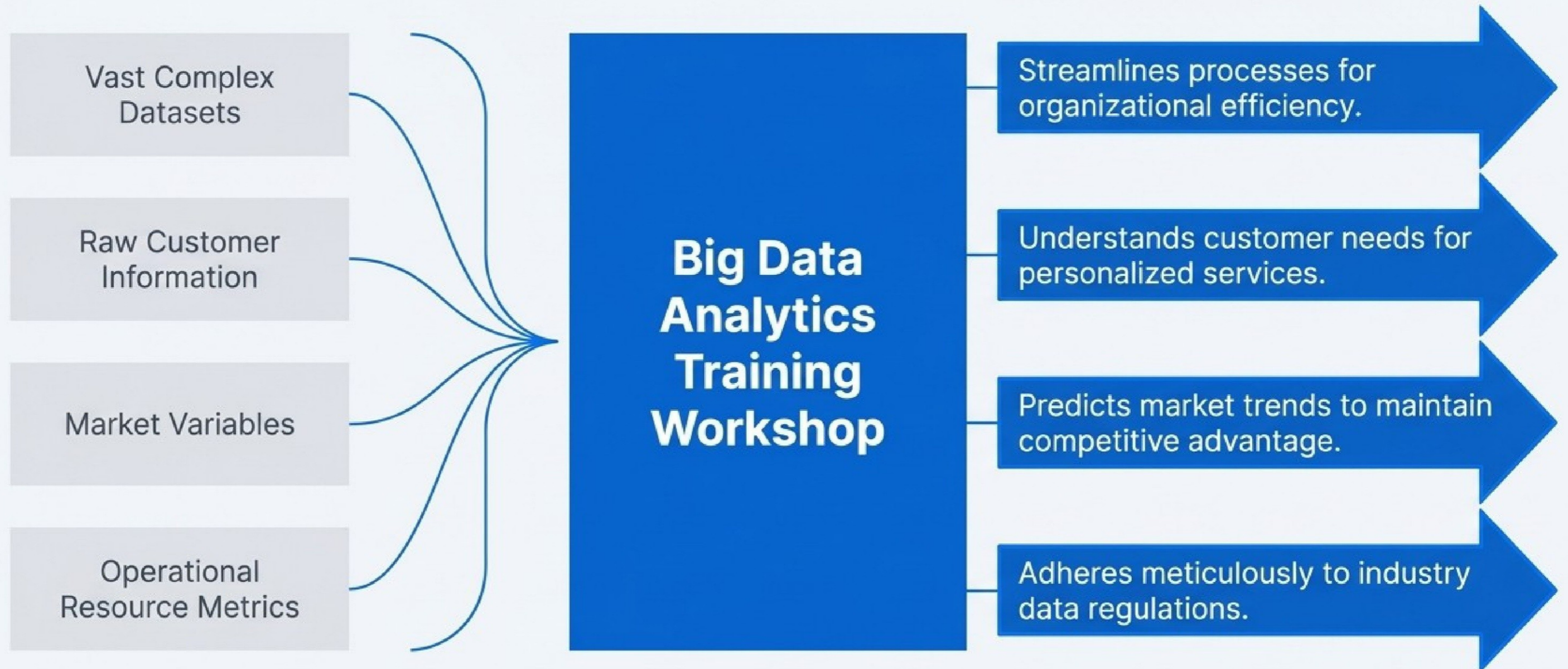
Phase 3: Analytics and Integration



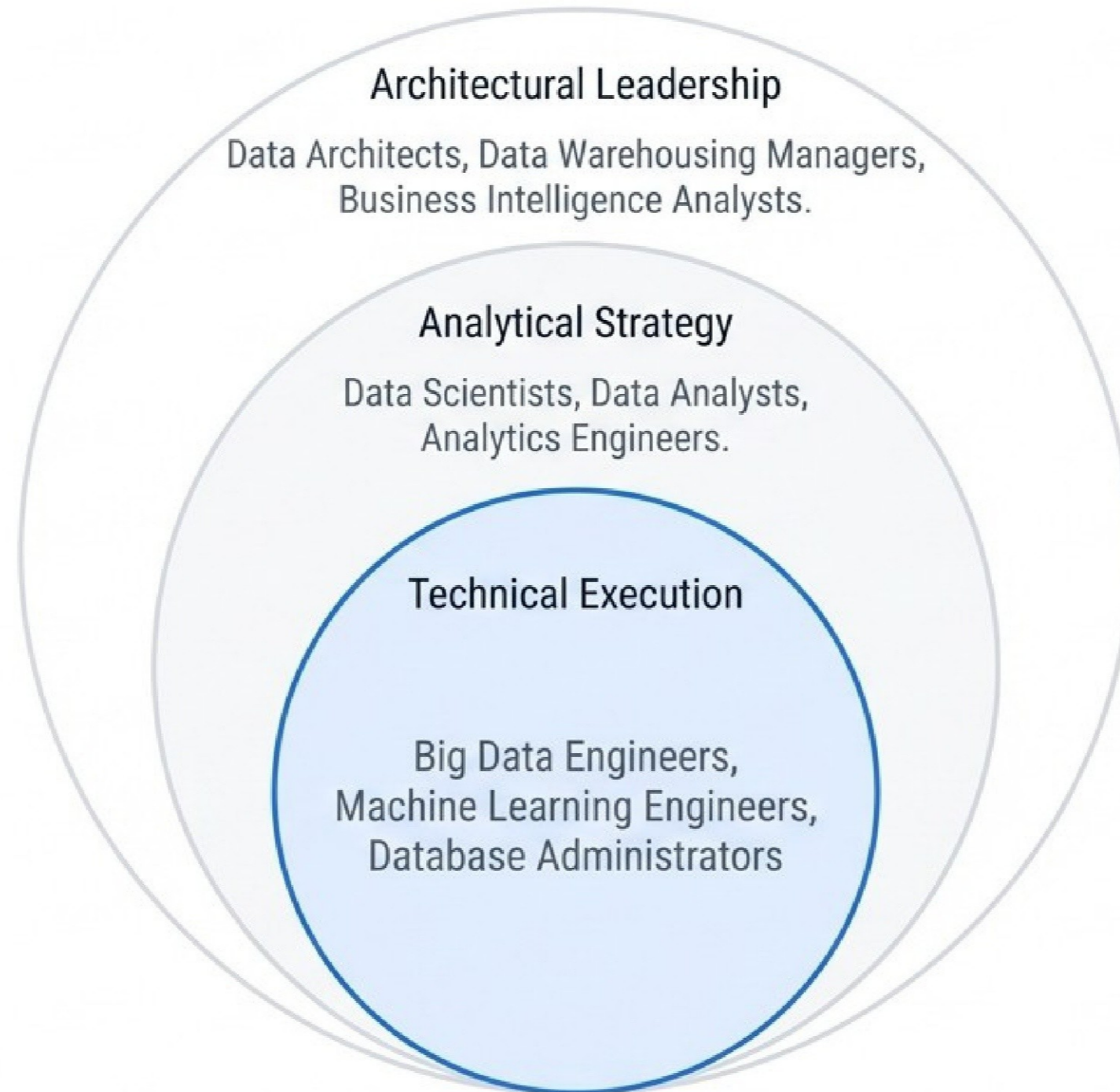
The Skill-to-Impact Conversion Matrix

Technical Capability	Operational Application	Business Outcome
Predictive Modeling	Constructing models using historical statistics	Forecasting future market and customer trends
Data Mining Algorithms	Extracting structured knowledge from vast datasets	Uncovering specific cost-saving opportunities
Advanced Statistical Analysis	Applying complex statistical methods to raw inputs	Enhancing accuracy in data-driven decision-making

The Analytics Transformation Engine



Target Audience Alignment



Adaptive Delivery Frameworks



Virtual Live Instructor-Led

- Ensures consistent, uniform learning outcomes across global locations.
- Accommodates large participant groups seamlessly.
- Integrates directly into existing employee schedules.



On-site Face to Face

- Tailors the learning environment to specific corporate requirements.
- Enables direct interaction for immediate doubt clarification.
- Features hands-on demonstration of specific internal processes.



Off-site Face to Face

- Provides a distraction-free environment to maximize learning engagement.
- Cultivates team bonding through collaborative activities.
- Boosts employee morale and professional development commitment.

Proof of Impact

"The Big Data Analytics course revolutionized how I approach my daily responsibilities. As a Senior Machine Learning Engineer, understanding industry best practices was essential, essential, and this training delivered beyond invaluable real-world experience. I now handle complex technical scenarios with enhanced confidence and systematic efficiency."

Delbert Crawford

Senior Machine Learning Engineer

Data Visualization Platform

Global Execution Capability



English | Español | 普通话 | Deutsch | العربية | Português | हिंदी | Français | 日本語 | Italiano



Master Your Enterprise Data Today

Equip your teams to process massive datasets, generate actionable insights, and drive your business forward with customized Big Data Analytics training.