

# High Impact Leadership Corporate Training Course

Empower Your Teams With Expert-Led  
Training To Drive Business Goals



# The Evolution Of Leadership Impact



## Traditional Management

Focuses on unstructured discussion, non-centralized administration, and cultural resistance.



## High Impact Intervention

Introduces intentional communication, emotional intelligence, and rigorous skill gap benchmarking.



## High-Performance Culture

Cultivates **psychologically safe environments**, agile decision-making, and sustainable enterprise enterprise results.

# The Program Architecture



## Duration

8 To 12 Hours



## Delivery

Instructor-Led Group  
Training



## Modalities

Virtual, On-Site, And  
Off-Site



## Network

10,000 Plus Verified Trainers



## Validation

Course Completion Certificate

# The Capability Activation Curve



## Prior Experience

Managing teams or organizational initiatives.

## Leadership Presence

Projecting confidence and managing authentic energy.

## Inspiring Others

Motivating through vocal dynamics and storytelling.

## Courageous Communication

Navigating tough conversations and conflict resolution.

## The Leader As Coach

Building accountability and long-term self-direction.

# The Core Learning Architecture

Card 1

## The Art Of Leadership Presence

Modules: Universal Communication, Managing Energy, Active Listening.

Establishing authentic trust and deep awareness.



Card 2

## The Leader As Communicator

Modules: Open Dialogue, The Situation Behavior Impact Model, Storytelling.

Fostering psychological safety and team alignment.



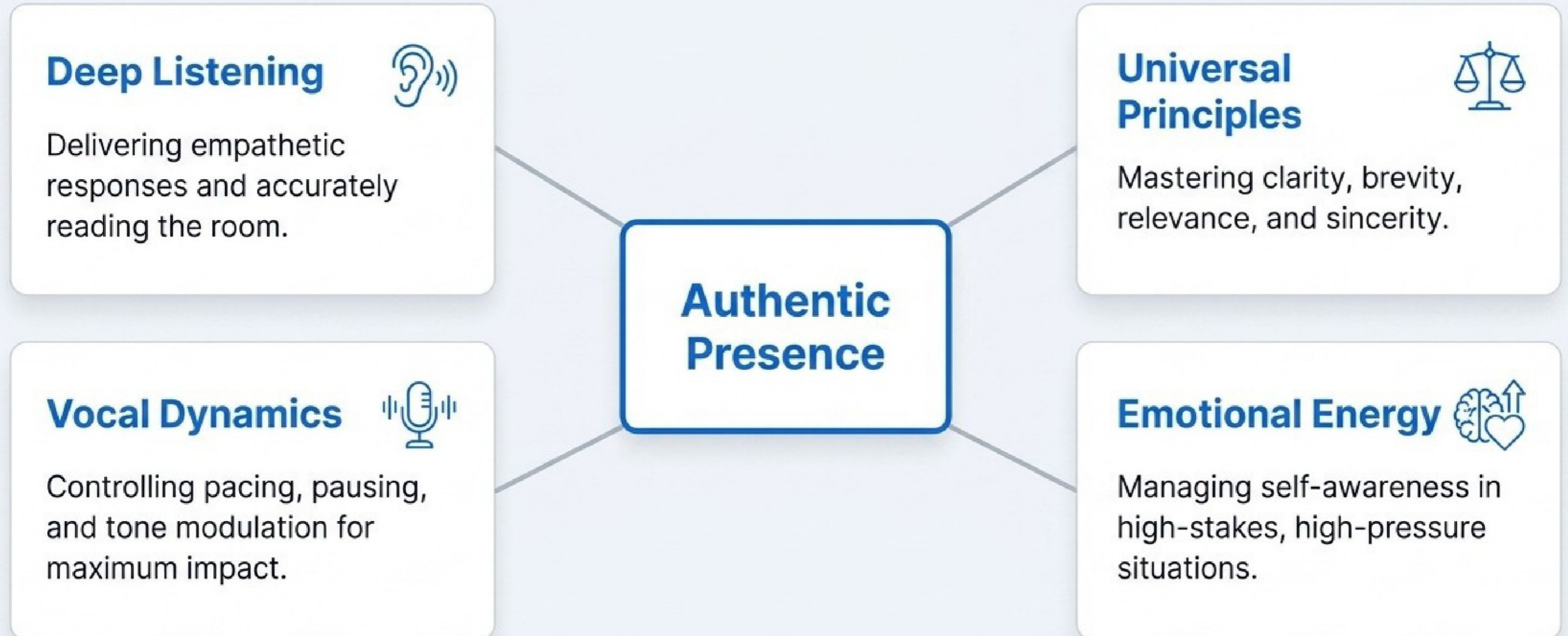
Card 3

## The Leader As Coach

Modules: The Grow Model, Curious Questioning, Empathy Tools.

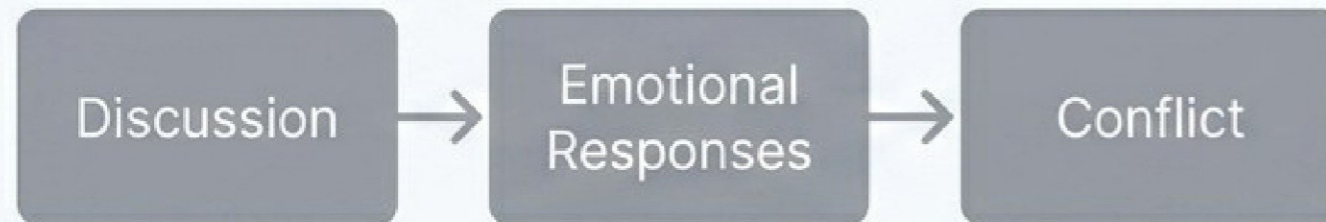
Driving long-term employee growth and retention.

# Phase One: The Art Of Leadership Presence

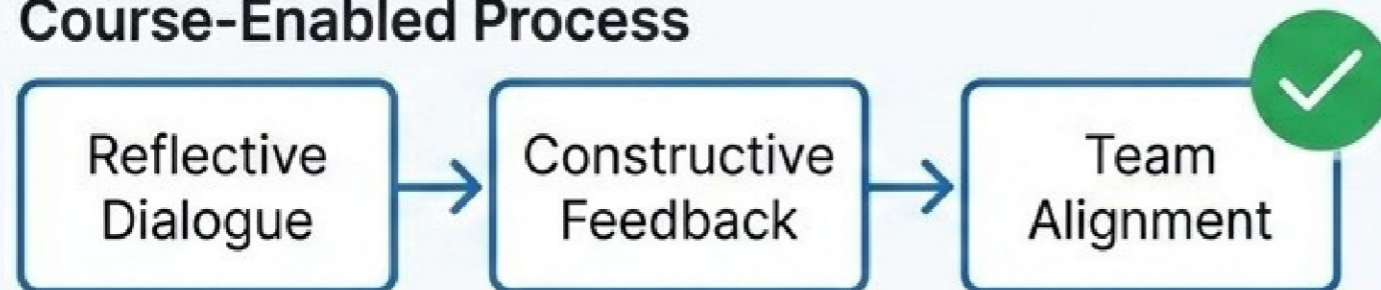


# Phase Two: The Leader As Communicator

## Traditional Process



## Course-Enabled Process



Card 1

### Reflective Listening

Validating emotions objectively without absorbing them.

Card 2

### Courageous Conversations

Addressing workplace conflict head-on and respectfully.

Card 3

### Constructive Feedback

Applying the structured Situation Behavior Impact framework.

Card 4

### Culture Storytelling

Reinforcing and scaling organizational values through narrative.

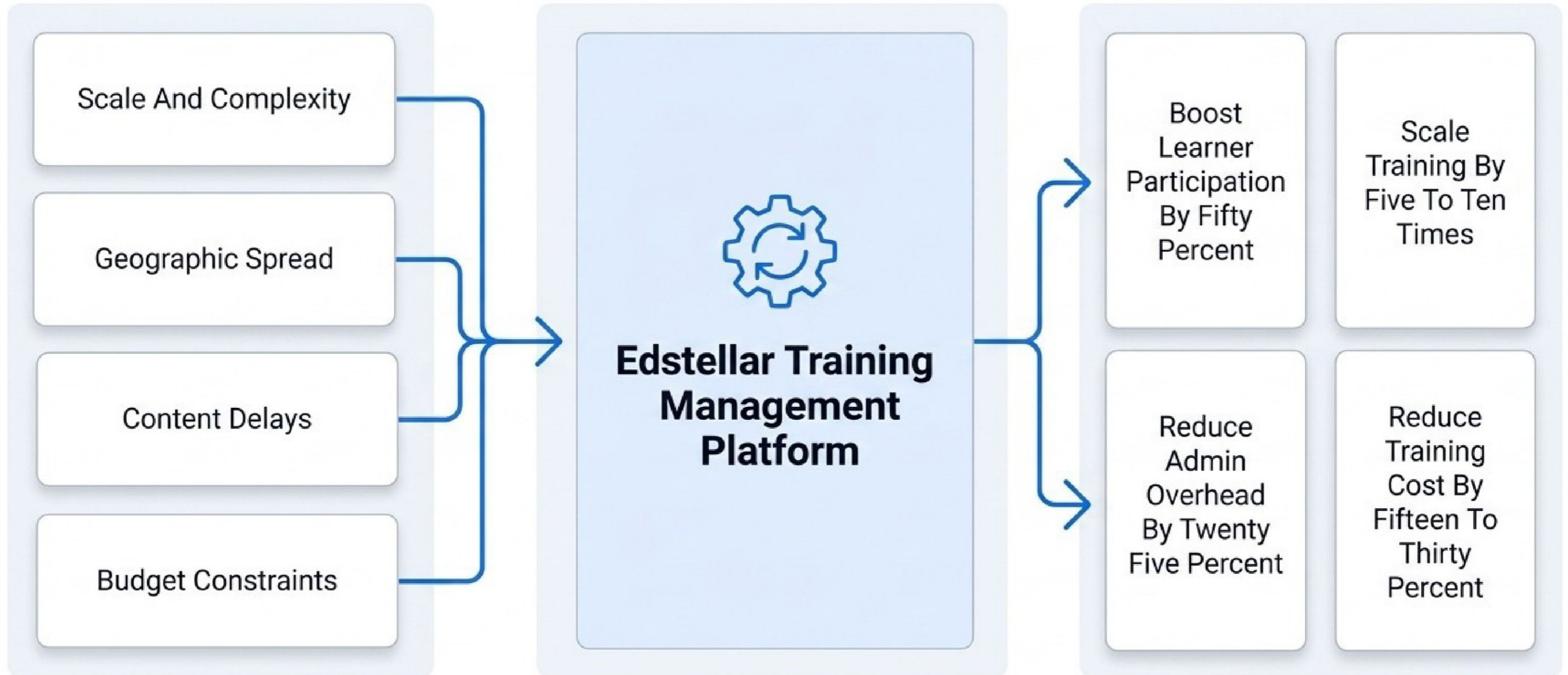
# Phase Three: The Leader As Coach



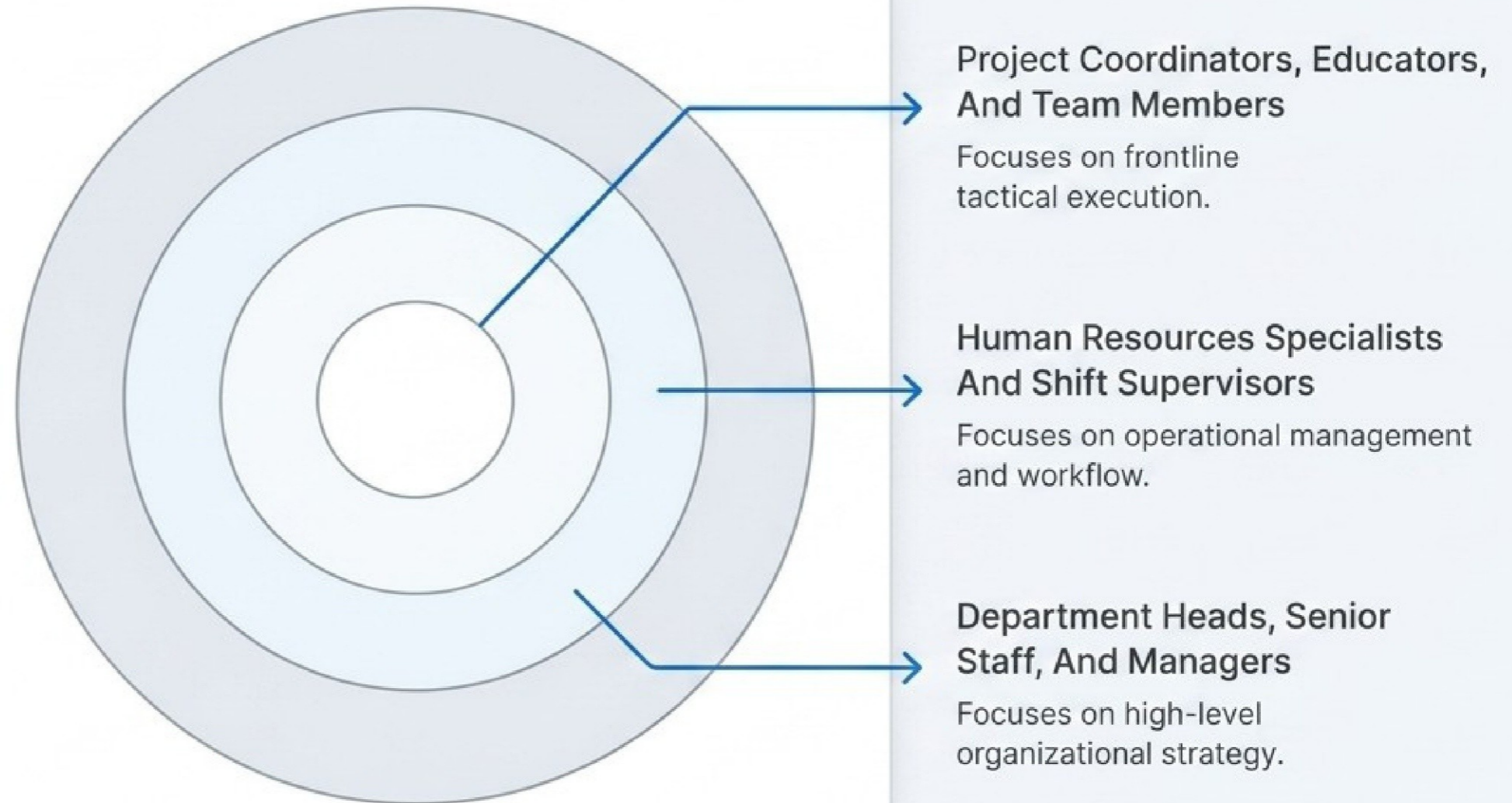
# The Organizational Skill Matrix

<b>Skill Dimension</b>	<b>Enterprise Challenge</b>	<b>Business Outcome</b>
Communication Skills	Logistical Complications And Silos	Fosters Collaboration And Team Clarity
Strategic Thinking	Scale, Complexity, And Disruption	Effective Long-Term Resource Allocation
Mentoring Capabilities	Cultural Resistance And Attrition	Drives Employee Growth And Retention

# The Enterprise Transformation Engine



# Target Audience Alignment



The curriculum methodology adapts dynamically—from tactical field execution up to elite enterprise strategy.

# Enterprise-Grade Delivery Ecosystem



## Live Virtual Instructor-Led

- Global reach for remote teams
- Uniform learning outcomes
- Accommodates large groups easily



## On-Site Face To Face

- Tailored to workplace environment
- Direct interactive learning
- Hands-on demonstration of processes



## Off-Site Face To Face

- Distraction-free dedicated focus
- Improves team bonding
- Boosts overall employee morale

# Proof Of Impact

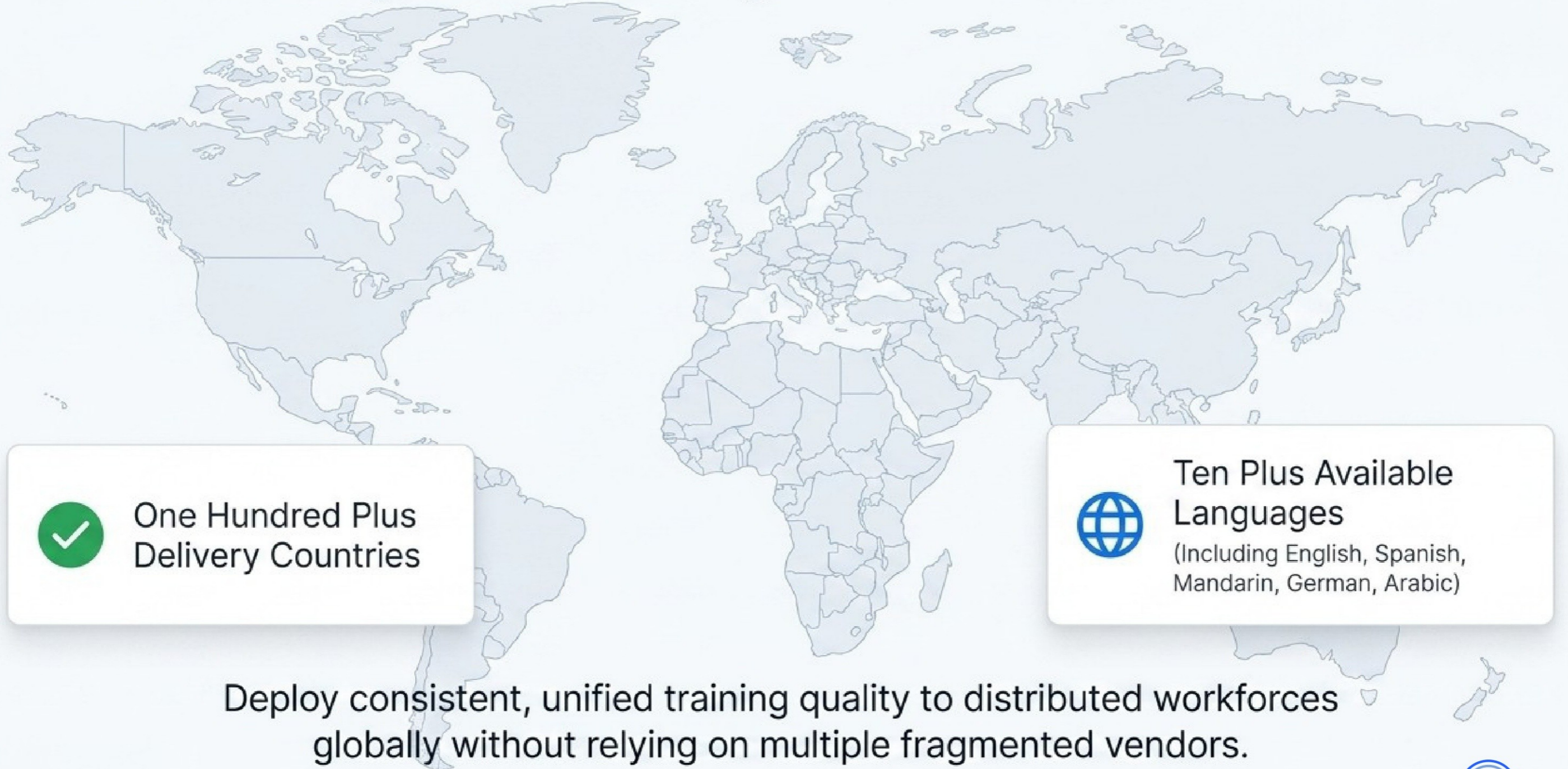
*“Edstellar's Leadership training programs have significantly strengthened our management team's strategic thinking, adaptability, and decision-making capabilities. The sessions blend real-world business scenarios with actionable leadership frameworks, enabling leaders to navigate change, guide their teams with clarity and confidence, and drive a long-term vision aligned with organizational goals.”*

**Shalini Menon**

Chief People Officer

A Global Technology Enterprise

# Global Enterprise Delivery



One Hundred Plus  
Delivery Countries



Ten Plus Available  
Languages  
(Including English, Spanish,  
Mandarin, German, Arabic)

Deploy consistent, unified training quality to distributed workforces globally without relying on multiple fragmented vendors.



# Initiate Your Skill Transformation

Plan your next skill transformation initiative with Edstellar, a leading corporate training service provider.

URL: [edstellar.com](https://edstellar.com)

Email: [contact@edstellar.com](mailto:contact@edstellar.com)

Phone: Plus One Six Eight Two Two Nine  
Seven Four Eight Three Zero