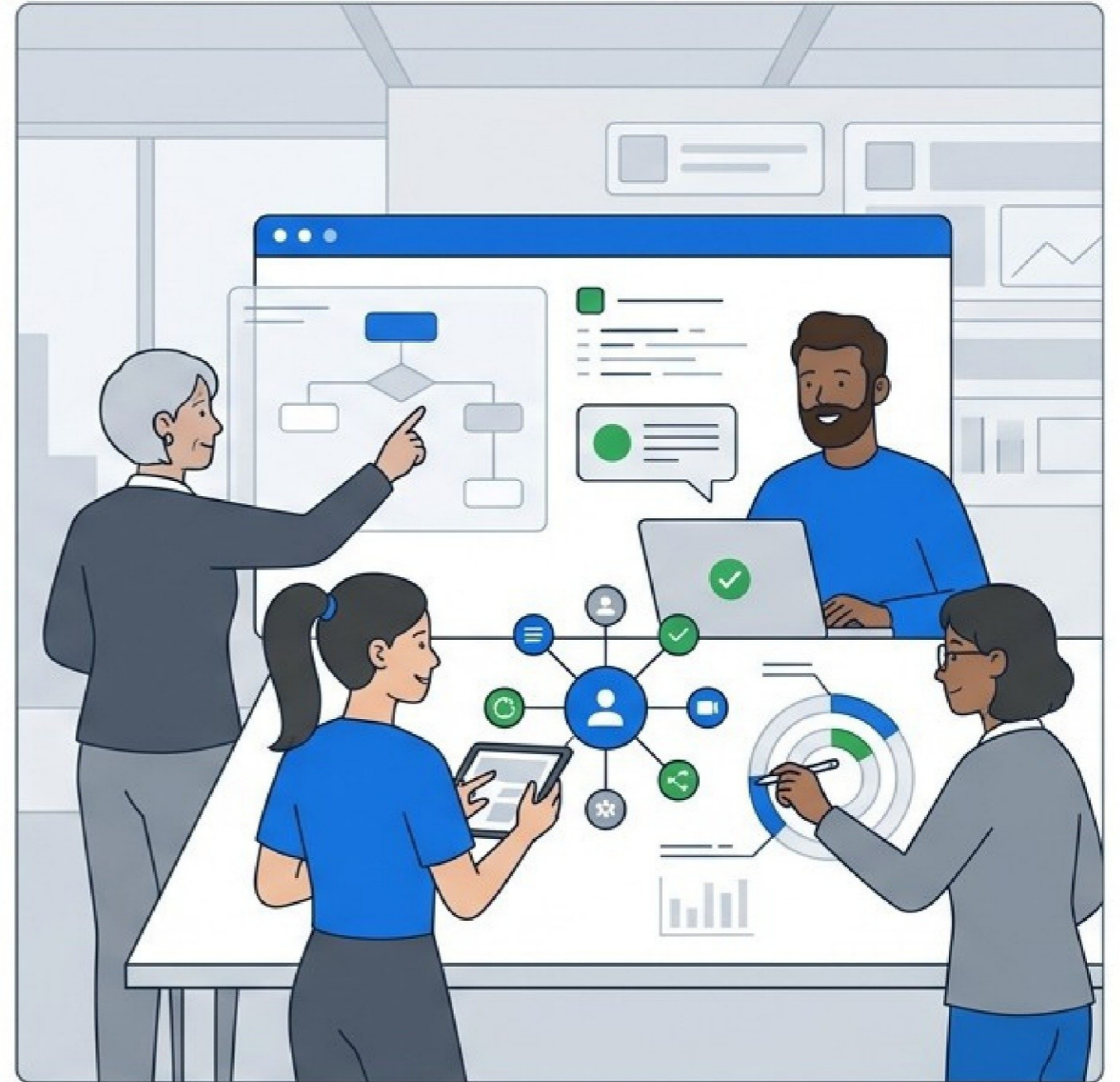


# Managing Millennials Corporate Training

Equip Leaders With The Techniques  
To Manage Millennials Effectively



# The Generational Integration Shift



## Cultural Resistance

Misaligned expectations, rigid scheduling, and high turnover due to unaddressed generational differences.



## Expert-Led Intervention

Edstellar's targeted instructor-led training equipping managers with tailored communication and motivation strategies.



## Future-Ready Teams

High retention, adaptable corporate culture, and seamless multigenerational collaboration.

# Enterprise Training Specifications



**8 To 16  
Hours**

Duration



**Instructor-  
Led**

Group Training



**Virtual, On-  
Site, Or Off-  
Site**

Delivery Flexibility



**10,000 Plus  
Verified  
Trainers**

Global Network



**Course  
Completion  
Certificate**

Validated Skills

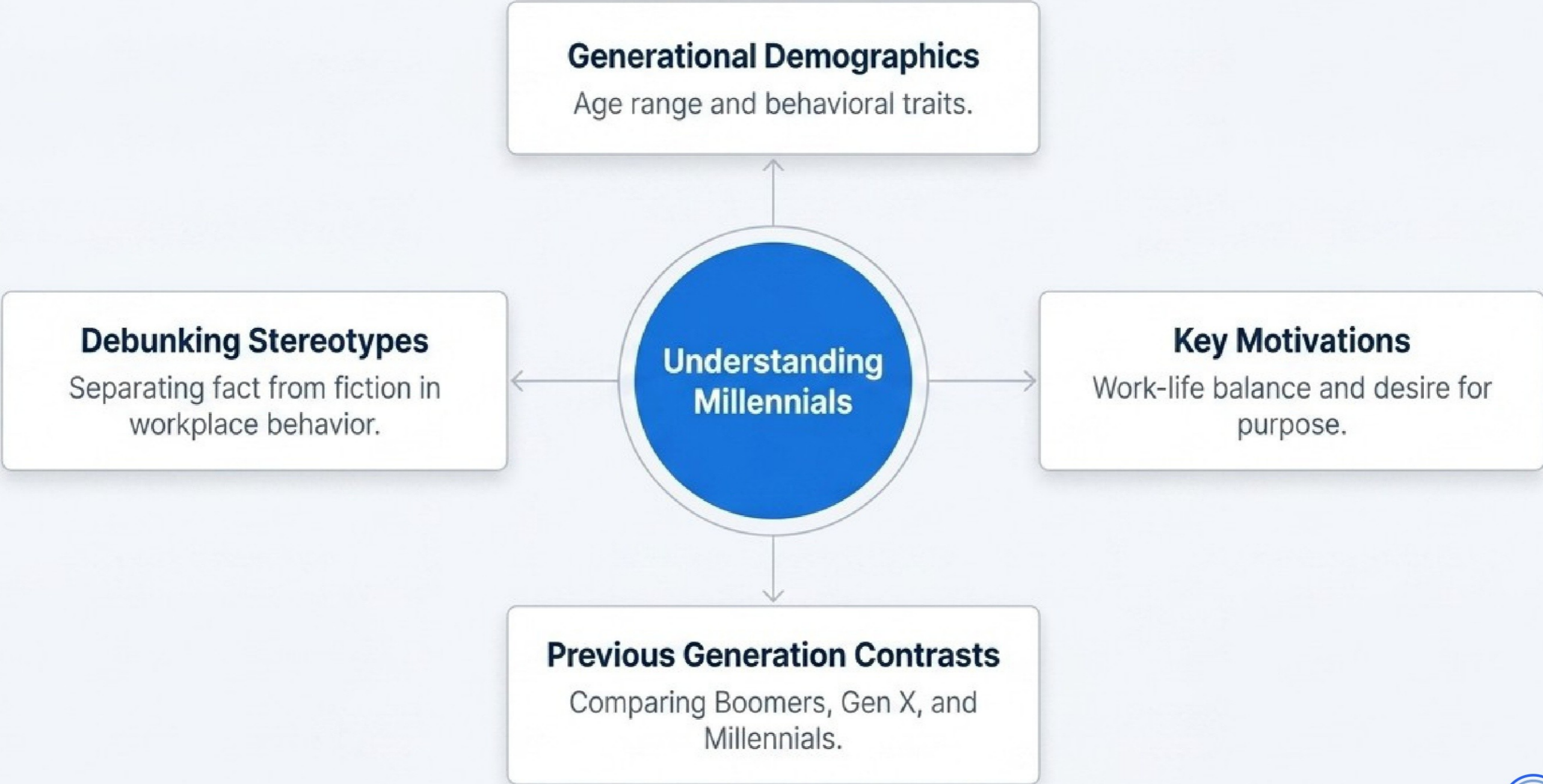
# The Capability Activation Curve



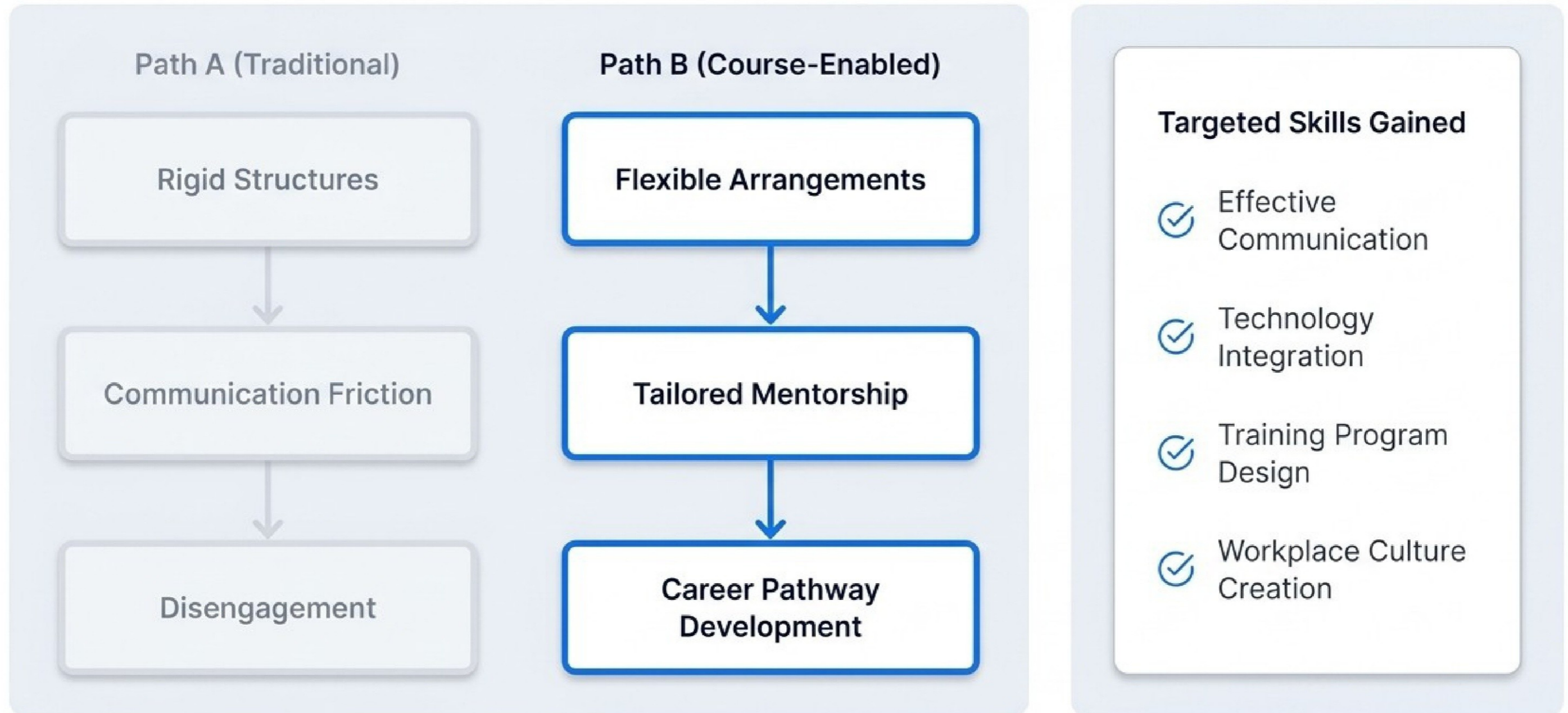
# Structural Learning Phases



# Phase One Core Mechanics



# The Engagement Transformation Flow



# Enterprise Ecosystem Integration

## Centralized Training Management

Organize and track initiatives across the organization.

## Hrms Platform Integration

Seamless data synchronization with existing tech stacks.

## Edstellar Platform Integration

## Real-Time Analysis

Tracking ROI and learner participation metrics.

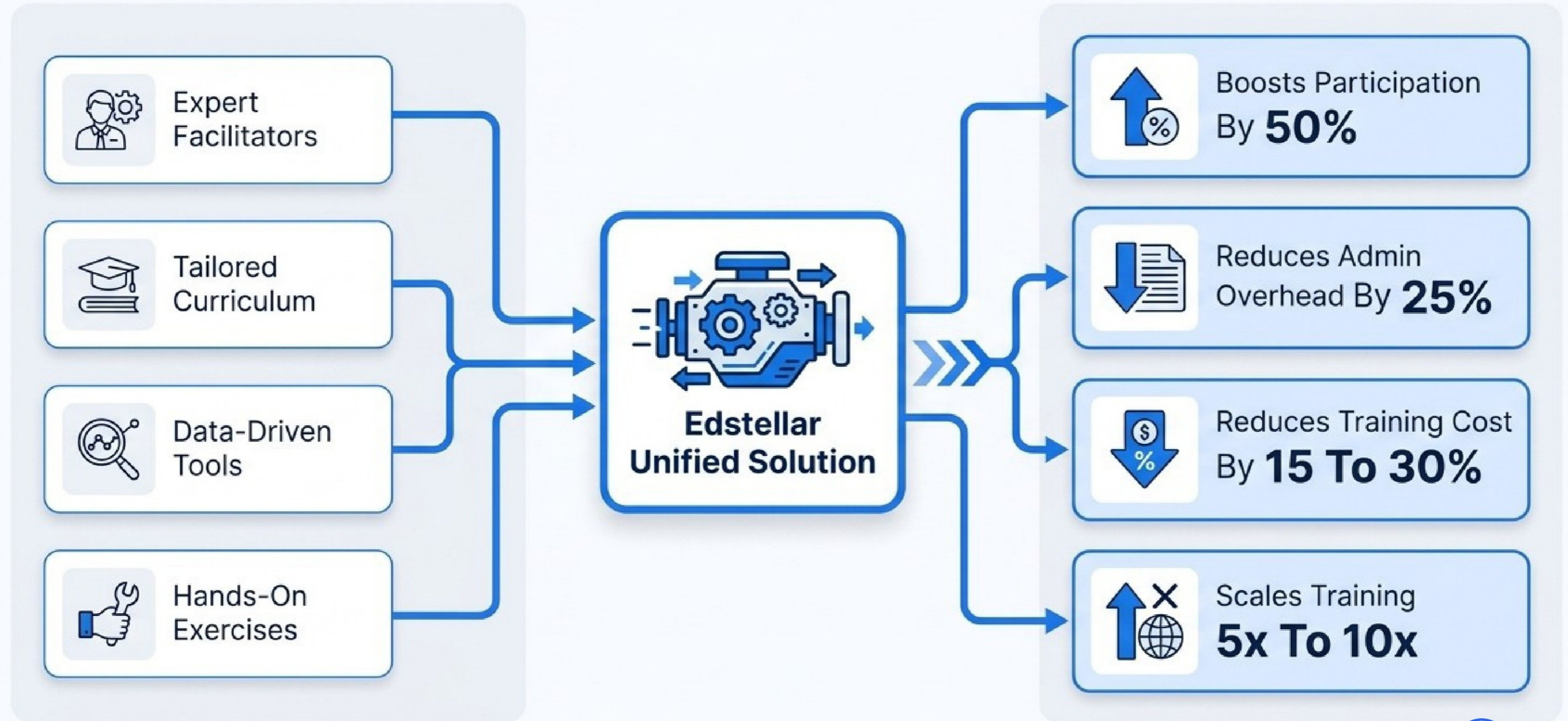
## Scale And Customization

Scaling training 5x to 10x globally seamlessly.

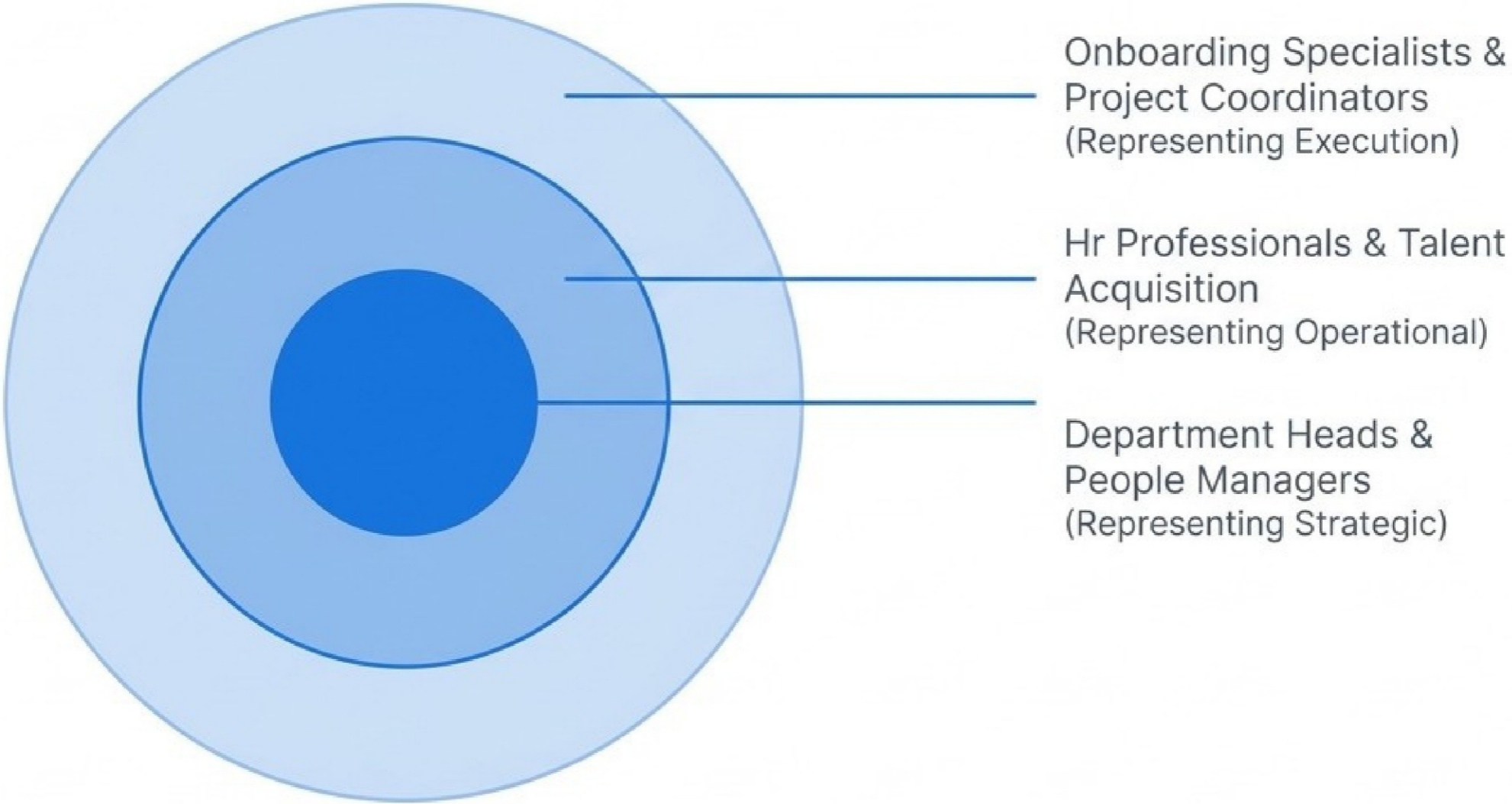
# Organizational Upskilling Challenges Matrix

<b>Large Organizations</b>	<b>Small And Medium Businesses</b>	<b>Common Corporate Challenges</b>
Training In Multiple Geographies	Lack Of Training Infrastructure	Logistical Complications
Non-Centralized Administration	Vendor Reliability Issues	Over-Reliance On Multiple Vendors
Scale And Complexity	Customization Challenges	Consistency In Training Quality

# The Investment Return Engine



# Target Audience Alignment



# Flexible Enterprise Deployment



## Virtual Live Instructor-Led

- Global reach from any location
- Consistent training quality
- Interactive tools for engagement



## On-Site Face-To-Face

- Higher engagement through direct interaction
- Tailored workplace environment
- Improved team collaboration



## Off-Site Face-To-Face

- Distraction-free focused environment
- Improved team bonding activities
- Boosts employee morale

# Proof of Impact

*"This Managing Millennials course was exactly what I needed to advance my career. As a People Manager, mastering generational leadership has become crucial for my success. I've confidently led multiple high-visibility initiatives leveraging this comprehensive knowledge. The real-world examples and deep dive into feedback mechanisms were particularly valuable for my professional growth."*

**Ashley Cunningham**

People Manager

A Top Workforce Strategy Consulting Company

# Borderless Capability Deployment



**Delivery  
Capability Across  
100 Plus  
Countries**

**Training Available In  
10 Languages**

English, Spanish, Mandarin,  
German, Arabic, Portuguese, Hindi,  
French, Japanese, Italian.

# Initiate Team Transformation



[edstellar.com](https://edstellar.com)

[contact@edstellar.com](mailto:contact@edstellar.com)