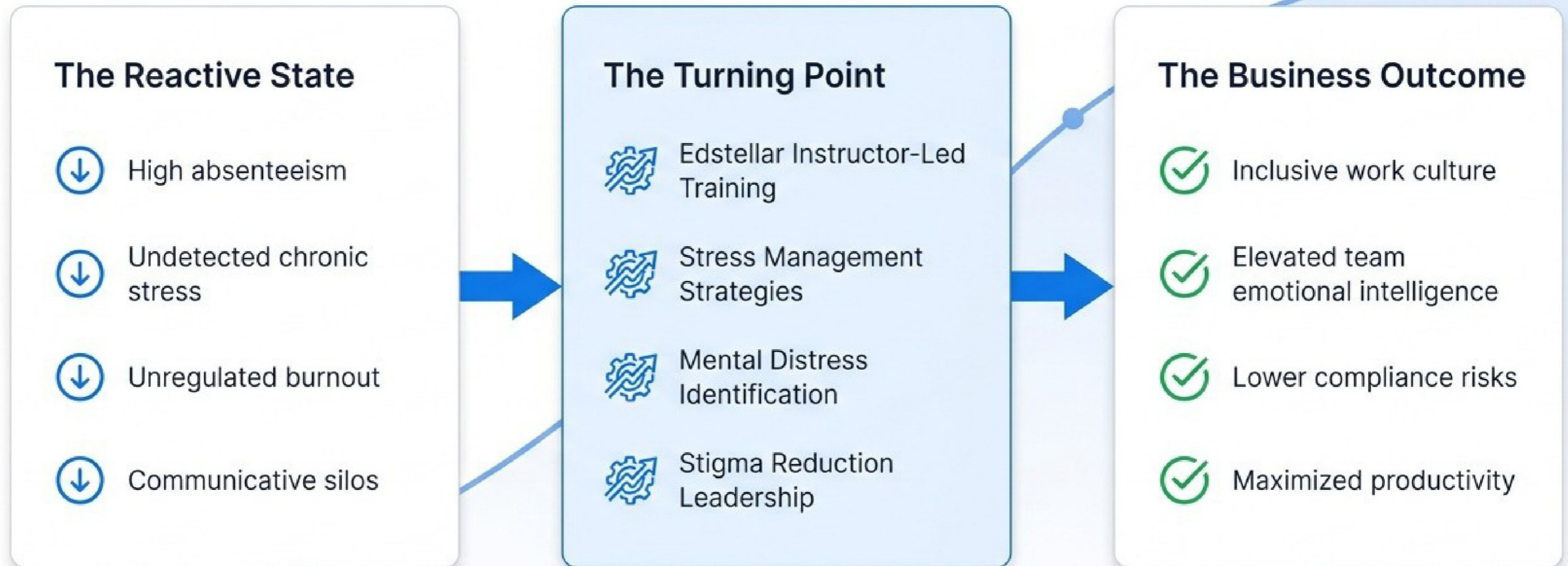


# Corporate Mental Health Awareness Training Course

Drive Team Excellence With Expert-Led Mental Health Corporate Training



# The Capability Activation Curve



# Corporate Training At A Glance



## Duration

6 To 8 Hours



## Delivery Type

Instructor-Led Group Training



## Modalities

Virtual, On-Site, Or Off-Site



## Trainer Network

10,000+ Verified Trainers



## Trainer Network

10,000+ Verified Trainers



## Credential / Certificate

Management Included

# The Mental Wellness Capability Staircase



# Architecting A Stigma-Free Environment



## Phase One

Deconstructing  
Stress

Pressure vs. Stress  
Brain & Body Impacts  
Burnout Symptoms

Building foundational awareness  
of holistic physical and mental  
well-being.



## Phase Two

Illness  
Identification

Depression  
Anxiety  
Psychosis  
Bipolar

Recognizing specific clinical  
conditions and deploying  
appropriate interventions.



## Phase Three

Strategic  
Compliance

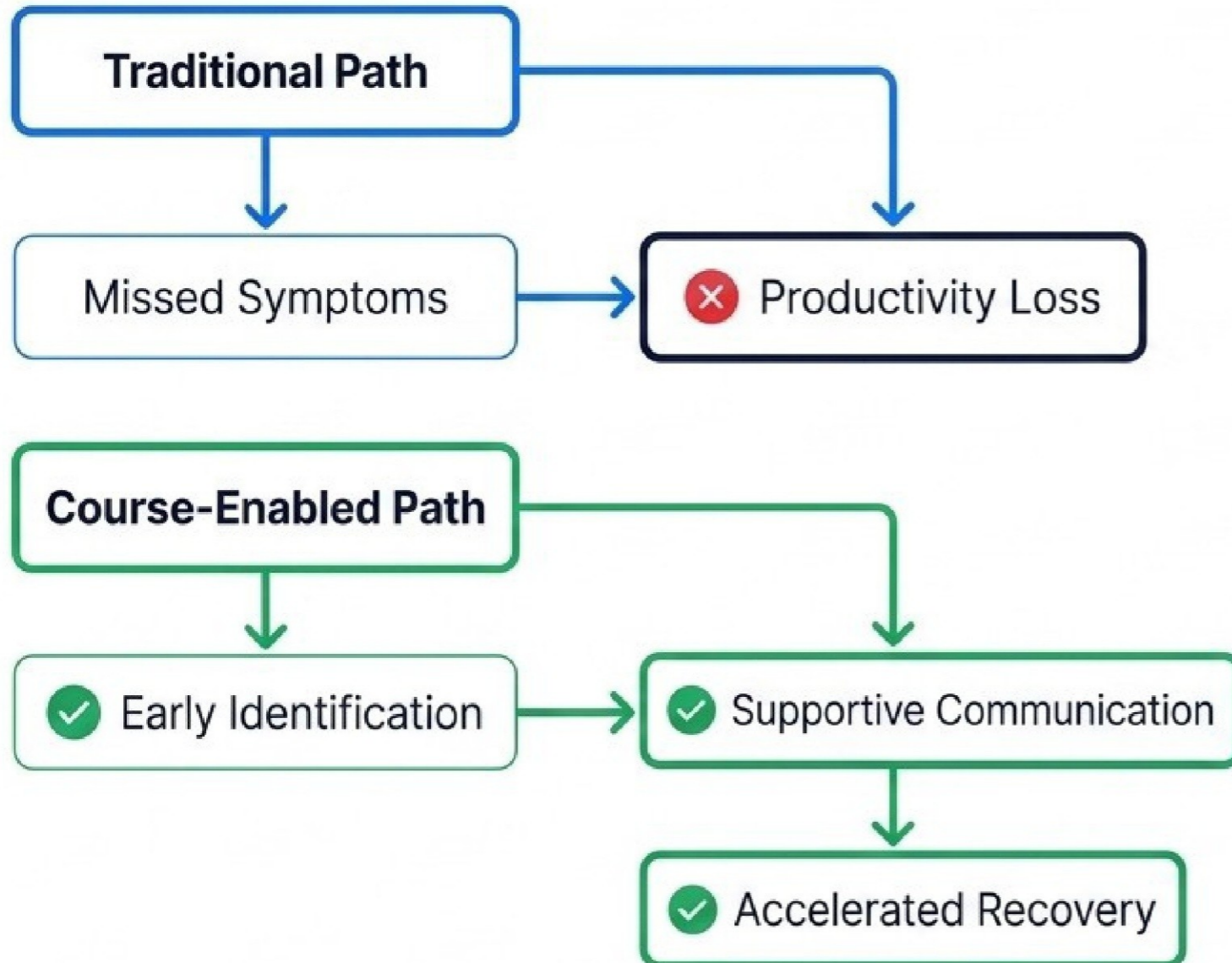
Legal Frameworks  
Equality Act 2010  
Action Planning

Aligning mental health initiatives  
with corporate law and  
enterprise planning.

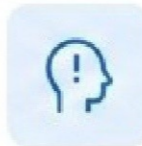
# Phase One: Deconstructing Workplace Stress



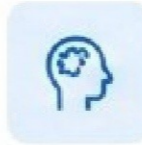
# Phase Two: Condition Identification And Support



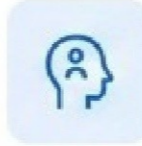
**Depression & Burnout:** Treatment options and prevention strategies.



**Generalized Anxiety:** Symptom identification and coping mechanisms.



**Complex Conditions:** Understanding Schizophrenia and Bipolar cycles.



**Suicide Awareness:** Risk factors and crisis management protocols.

# Phase Three: Navigating Legal Frameworks



# The Organizational Diagnostic Matrix

<b>Condition</b>	<b>Common Identifiers</b>	<b>Possible Interventions</b>
Acute Burnout	Chronic stress indicators, emotional exhaustion	Boundary setting, workload adjustment
Generalized Anxiety	Persistent worry, physiological stress responses	Coping mechanisms, reasonable workplace adjustments
Major Depressive Episode	Withdrawal, sustained low mood	Supportive communication, crisis protocol activation

# The ROI Engine For Corporate Well-Being



# Target Audience Alignment



# Enterprise-Grade Delivery Modalities



## Virtual Live Instructor-Led

- ✓ Accommodates large groups to scale learning.
- ✓ Seamless integration across 10+ languages.
- ✓ Interactive tools to drive high engagement.



## On-Site Face To Face

- ✓ High engagement through direct interaction.
- ✓ Improves team collaboration and knowledge sharing.
- ✓ Real-time clarification and customized environment.



## Off-Site Face To Face

- ✓ Distraction-free dynamic learning environment.
- ✓ Improves team bonding through targeted activities.
- ✓ Boosts morale and signals organizational commitment.

# Proof of Impact

*“The Mental Health Awareness training transformed our team’s entire approach to health promotion management... Our team’s productivity and solution quality have improved measurably, validating this investment.”*

**Karam Usam**

Lead Medical Imaging Manager

Enterprise Software Development Firm

# Global Delivery And Accessibility



## 100+ Countries

Delivery capabilities spanning across North America, Europe, Asia, and beyond.



## 10 Languages

Including English, Español, 普通话, Deutsch, Français, 日本語, and more.

# Empower Your Workforce Today



edstellar.com

contact@edstellar.com

+1 682 297 4830 / +44 151 453 4009

*Validating acquired skills and driving ongoing professional development.*