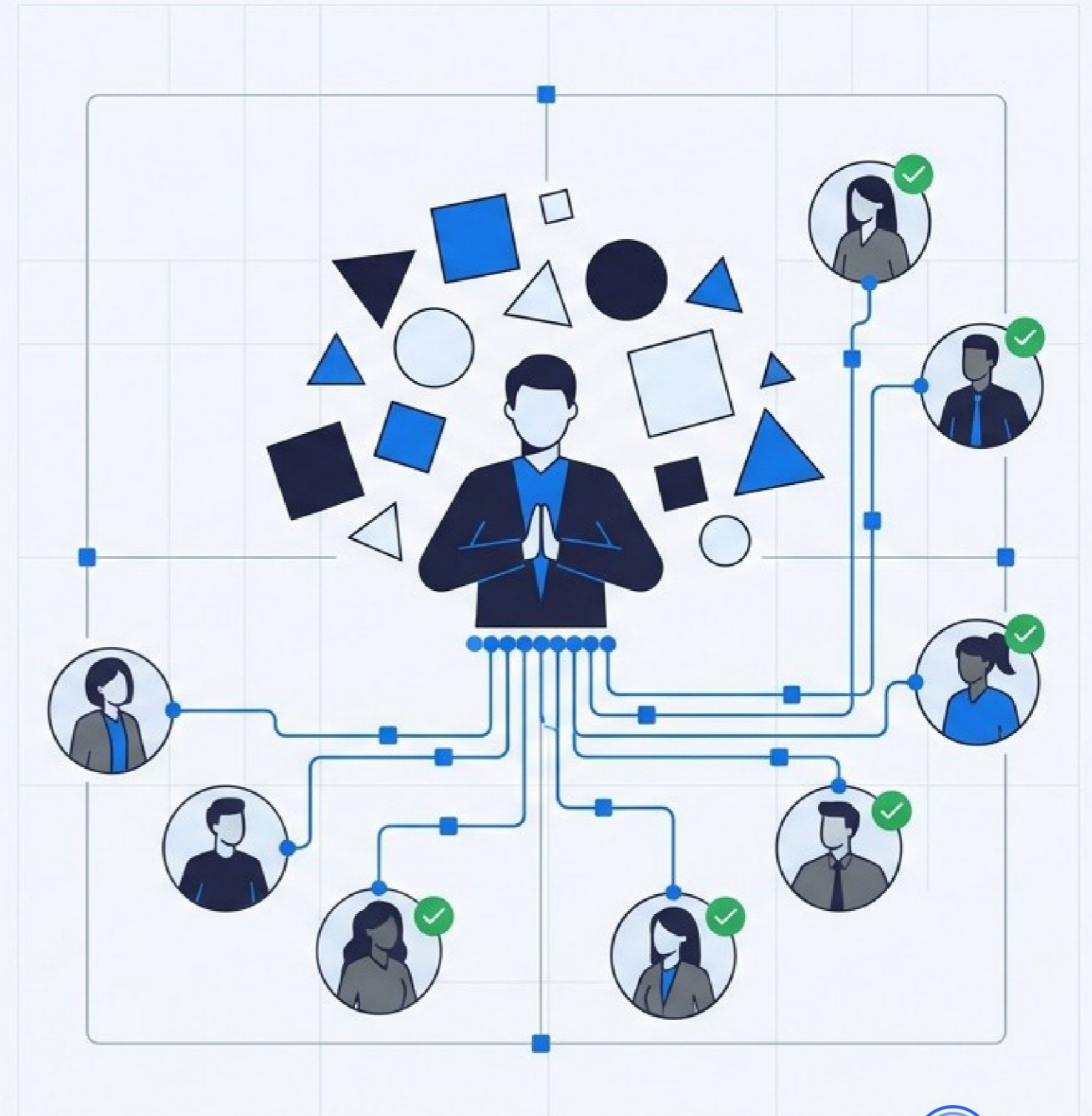


# Crisis Leadership Training Course for Corporate Teams

Transform Organizational Learning with a Premier Corporate Training Provider



# The Paradigm Shift in Organizational Resilience

## Reactive Management

- Logistical complications and non-centralized admin.
- Scattered emergency responses and communication silos.
- Delayed content updates and scheduling conflicts.

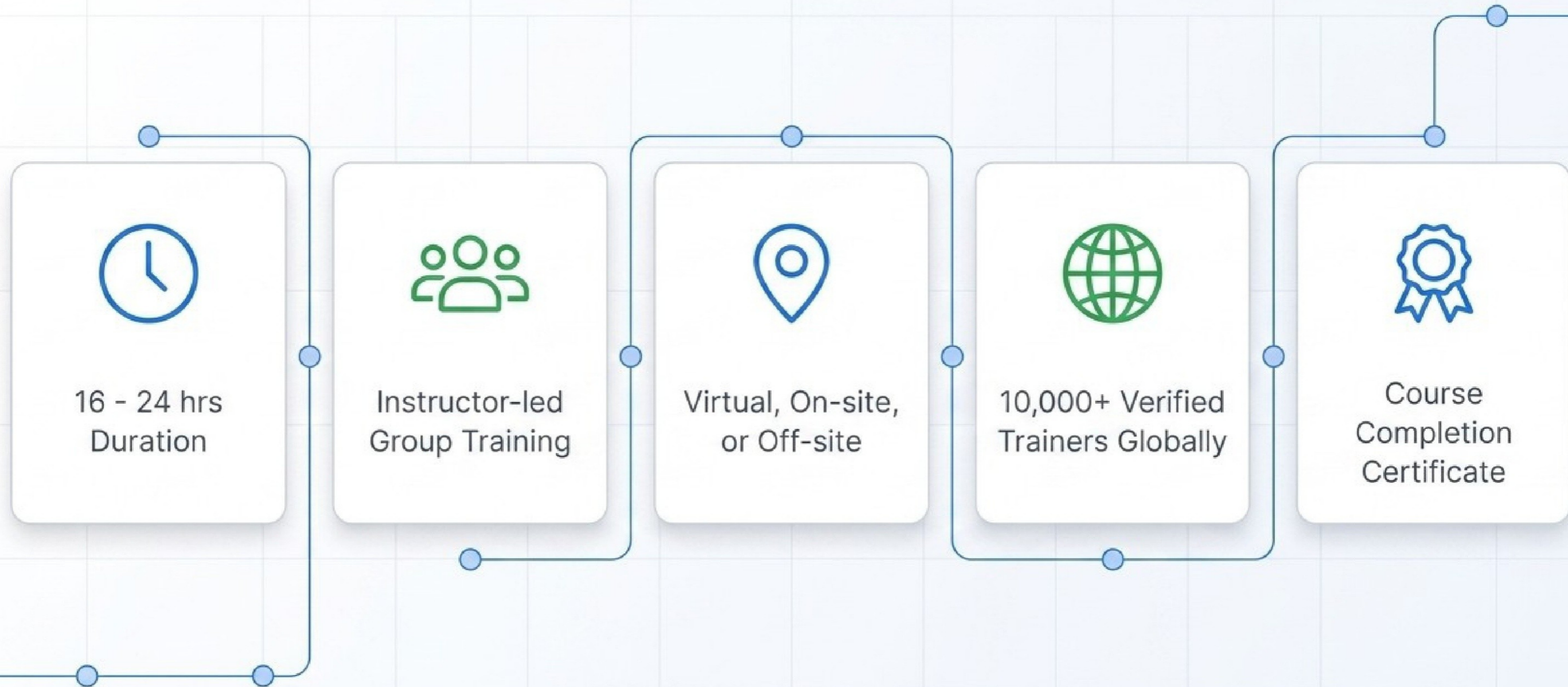
## The Capability Activation Curve

A strategic shift to proactive continuity planning, deep emotional intelligence, and synchronized cross-functional collaboration.

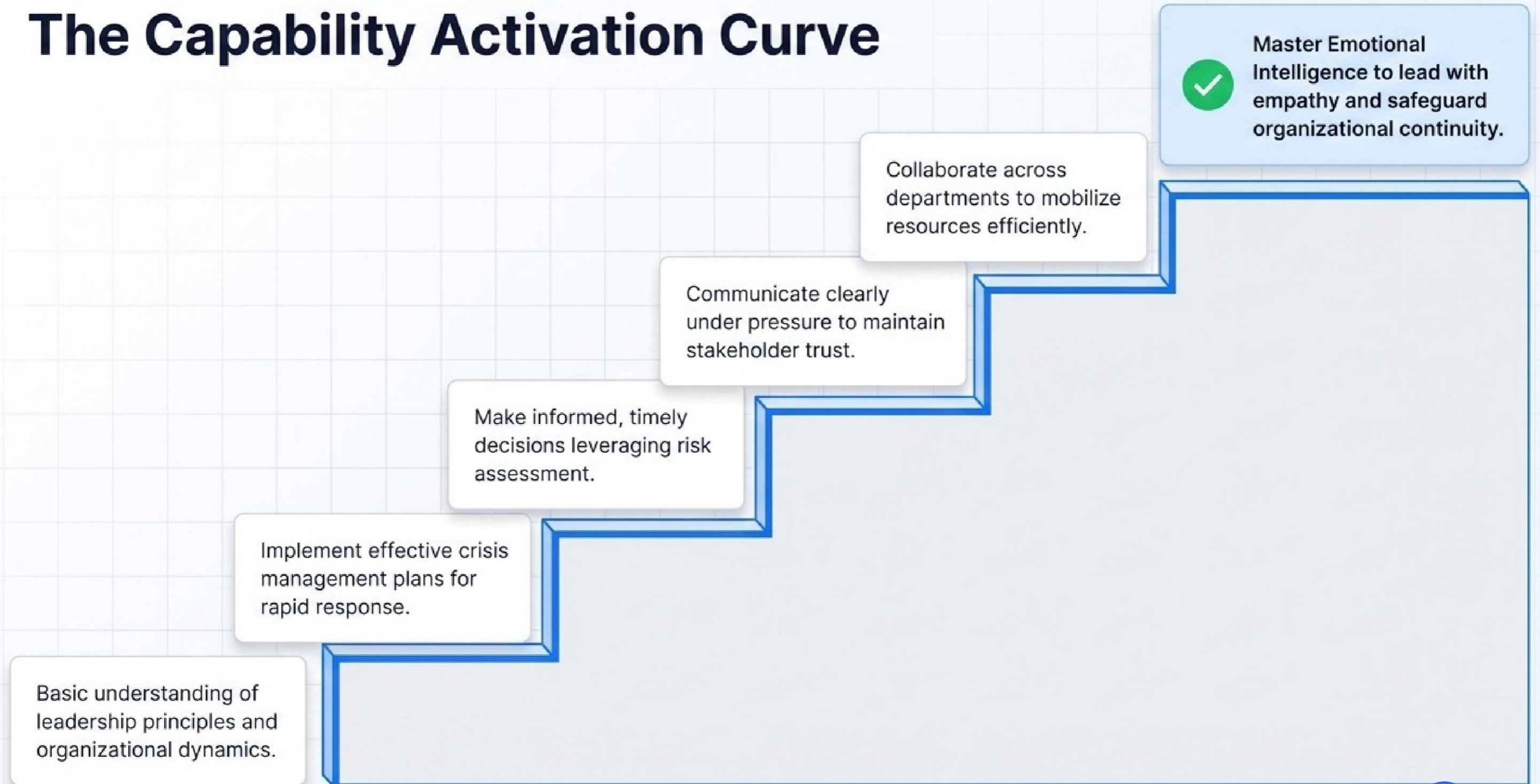
## Future-Ready Resilience

- ✓ Swift decision-making under pressure.
- ✓ Synchronized cross-functional collaboration.
- ✓ Maintained stakeholder trust.
- ✓ Minimized operational damage.

# Comprehensive Program Parameters



# The Capability Activation Curve



# Structured Framework for Crisis Leadership

## Phase 1: Continuity and Context

### Introduction & Context

Understanding planning principles, assessing vulnerabilities, and proactive versus reactive approaches.



## Phase 2: Committee Operations

### Scoping a Crisis Committee

Forming the committee, establishing clear objectives, and operationalizing meeting schedules and protocols.

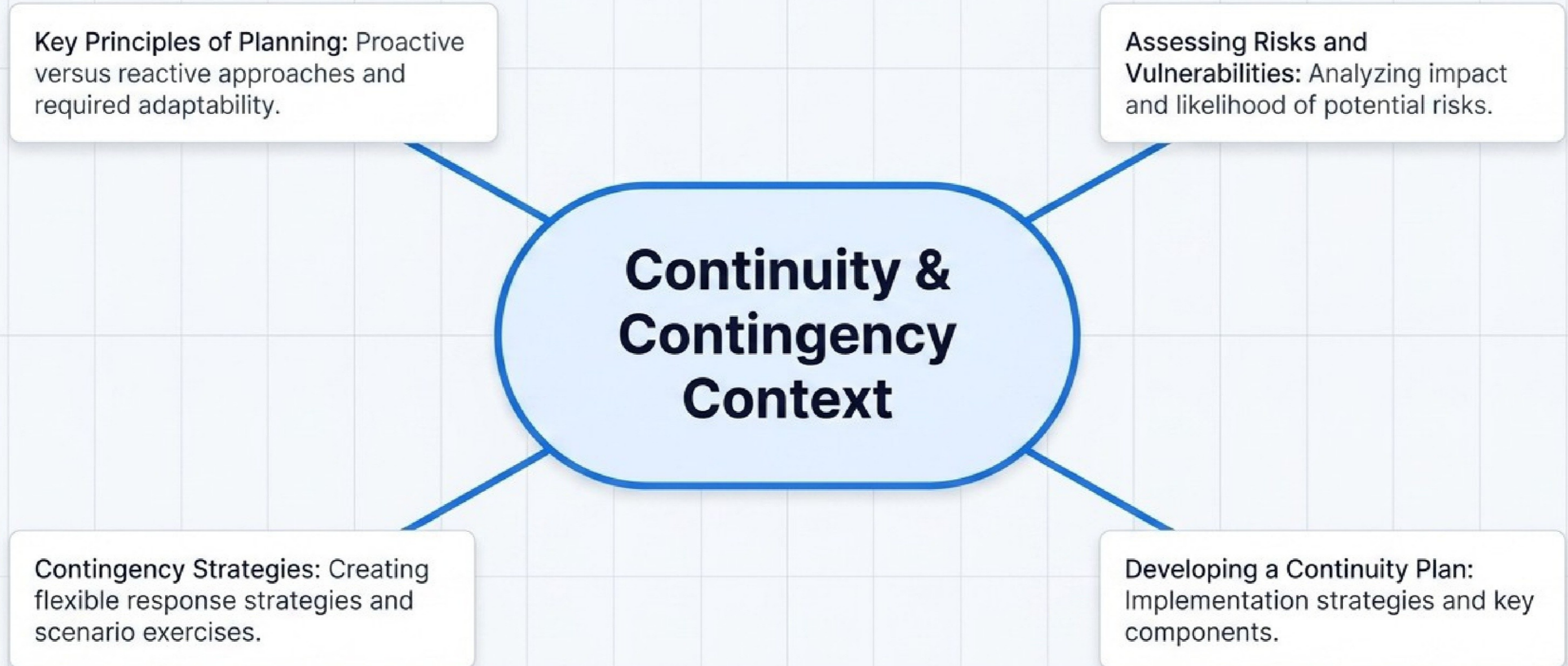


## Phase 3: Communication Strategy

### Communicating During/After a Crisis

Crafting effective messages, managing stakeholder engagement, and debriefing for long-term recovery.

# Phase 1: Contextualizing Risk and Continuity

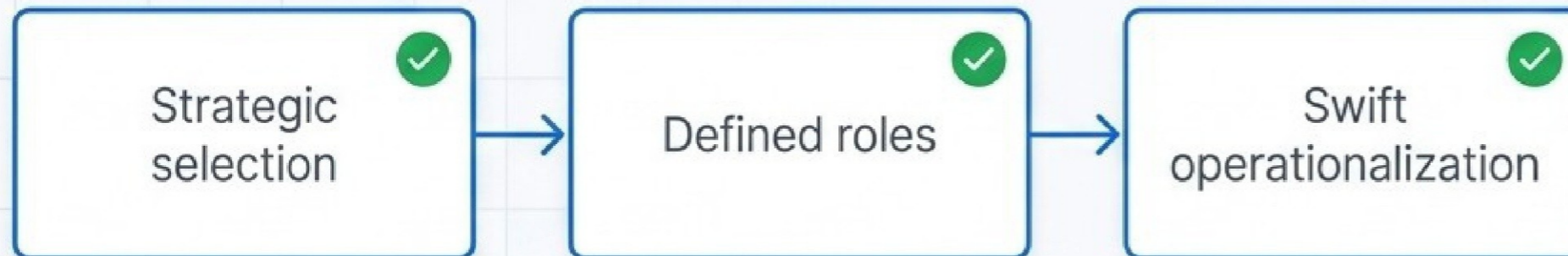


# Phase 2: Operationalizing the Crisis Committee

## Traditional Approach



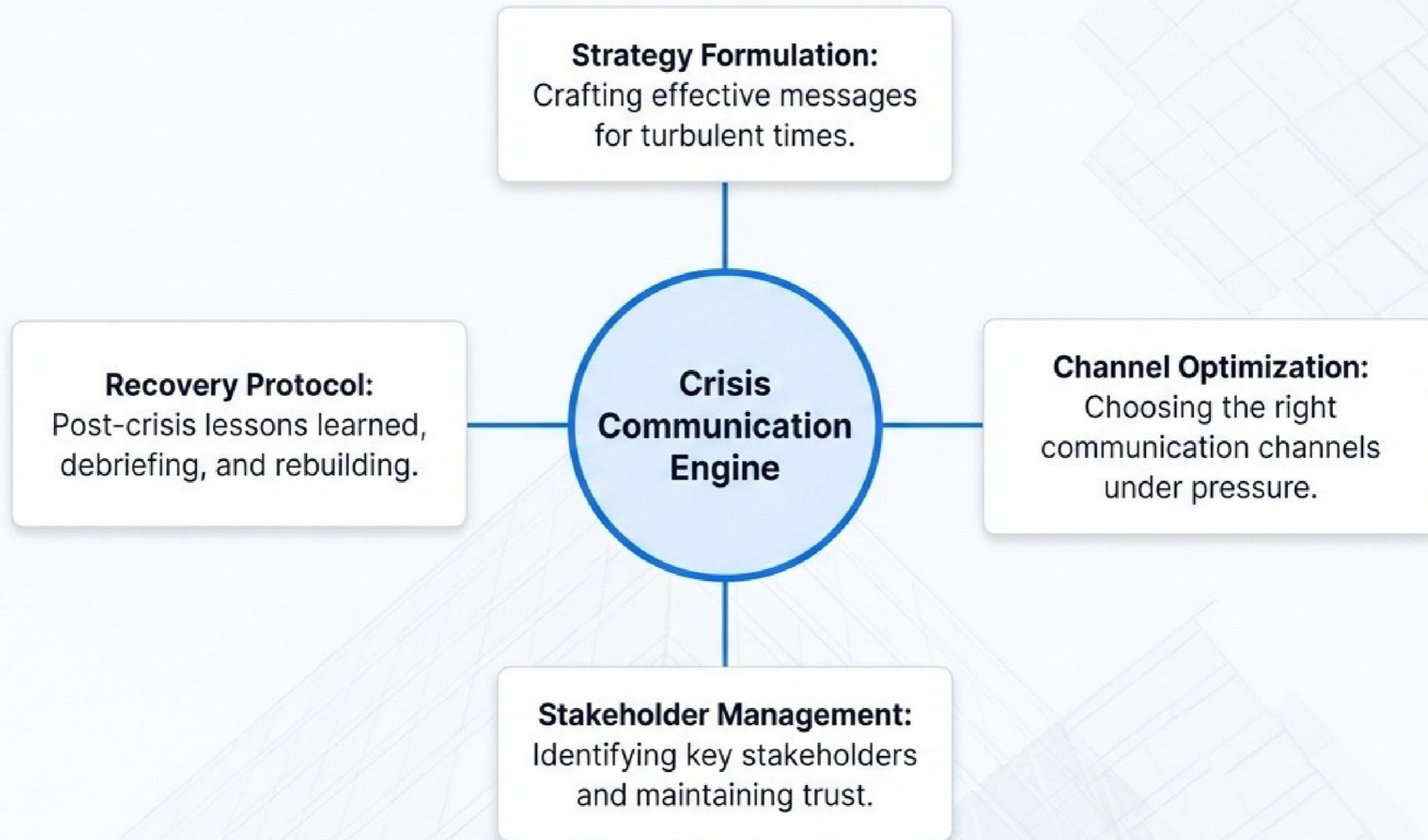
## Course-Enabled Approach



## Committee Activation Tools

- Selecting committee members and defining roles.
- Establishing short-term versus long-term goals.
- Operationalizing meeting schedules and protocols.
- Establishing communication channels and procedures.

# Phase 3: The Stakeholder Engagement Ecosystem



# Strategic Competency Translation Matrix

Core Skill Domain	Leadership Application	Enterprise Business Outcome
Analytical Learning & Risk Assessment	Implementing flexible contingency plans and scenario planning	Minimized operational damage and enhanced problem-solving
Timely Decision Making	Assessing situations quickly to make informed choices under pressure	Ensured continuity and swift, coordinated emergency response
Emotional Intelligence & Collaboration	Working effectively with diverse teams and leading with empathy	Maintained stakeholder trust and promoted a supportive work environment

# The Enterprise Transformation Engine



# Target Audience Alignment



# Adaptive Global Delivery Modalities



## Virtual Live Instructor-Led

- Expert-led, high-quality training anywhere.
- Consistent global training quality.
- Learn without travel logistics.



## On-site

- In-house face-to-face interaction.
- Tailored to specific workplace environments.
- Enhanced team collaboration and process demonstration.



## Off-site

- Distraction-free dynamic learning environment.
- Dedicated schedule away from office setup.
- Boosts employee morale and networking.

# Proof of Impact

*The Crisis Leadership training enhanced my ability to architect and implement sophisticated business continuity strategies. Understanding rapid decision making through intensive crisis response frameworks exercises proved invaluable. We've fully expanded our service portfolio based on these enhanced capabilities.*

**Wu Mao**

Chief Strategy Officer

Organizational Development Solutions

# Borderless Skilling Infrastructure

## 100+ Countries

Delivery capability across North America, Europe, Asia, and emerging markets.

## 10+ Languages

Available in English, Español, 普通话, Deutsch, العربية, Português, हिंदी, Français, 日本語, and Italiano.

# Secure Your Organizational Resilience Today



Equip your leadership teams with the critical competencies required to navigate uncertainty, safeguard stakeholder interests, and convert upskilling challenges into strategic growth opportunities.

**[contact@edstellar.com](mailto:contact@edstellar.com) | [edstellar.com](https://edstellar.com)**