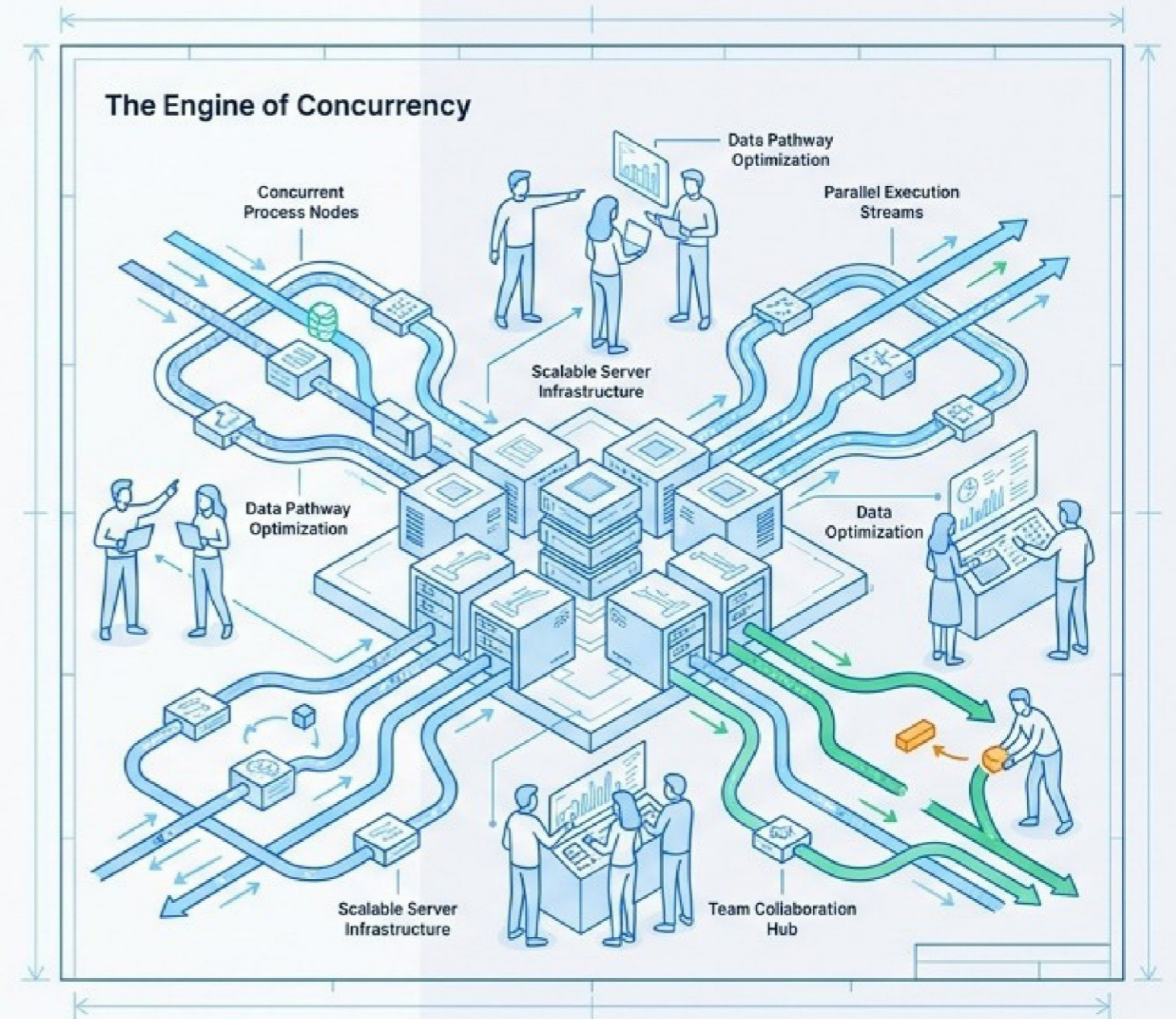
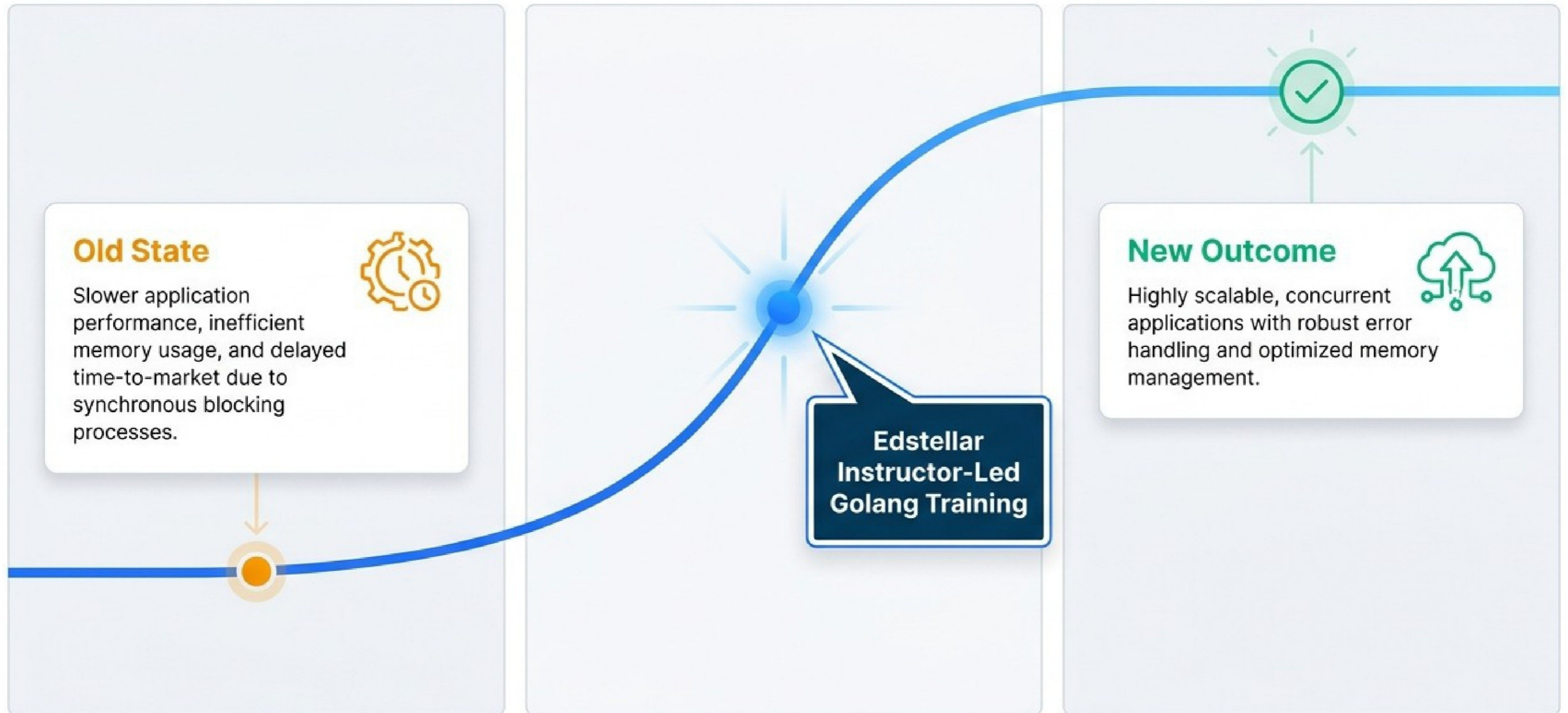


Corporate Golang Training Course

Drive Team Excellence With Expert-Led Golang Training For Efficient, Concurrent Software Solutions.



The Capability Activation Curve



Course At-a-Glance



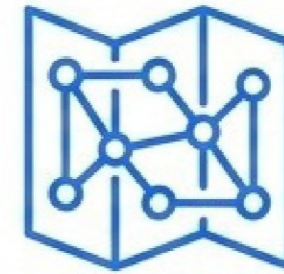
Course Duration

32 - 40 Hours



Format

Instructor-Led Training



Delivery Modalities

Virtual / On-Site / Off-Site



Global Scale

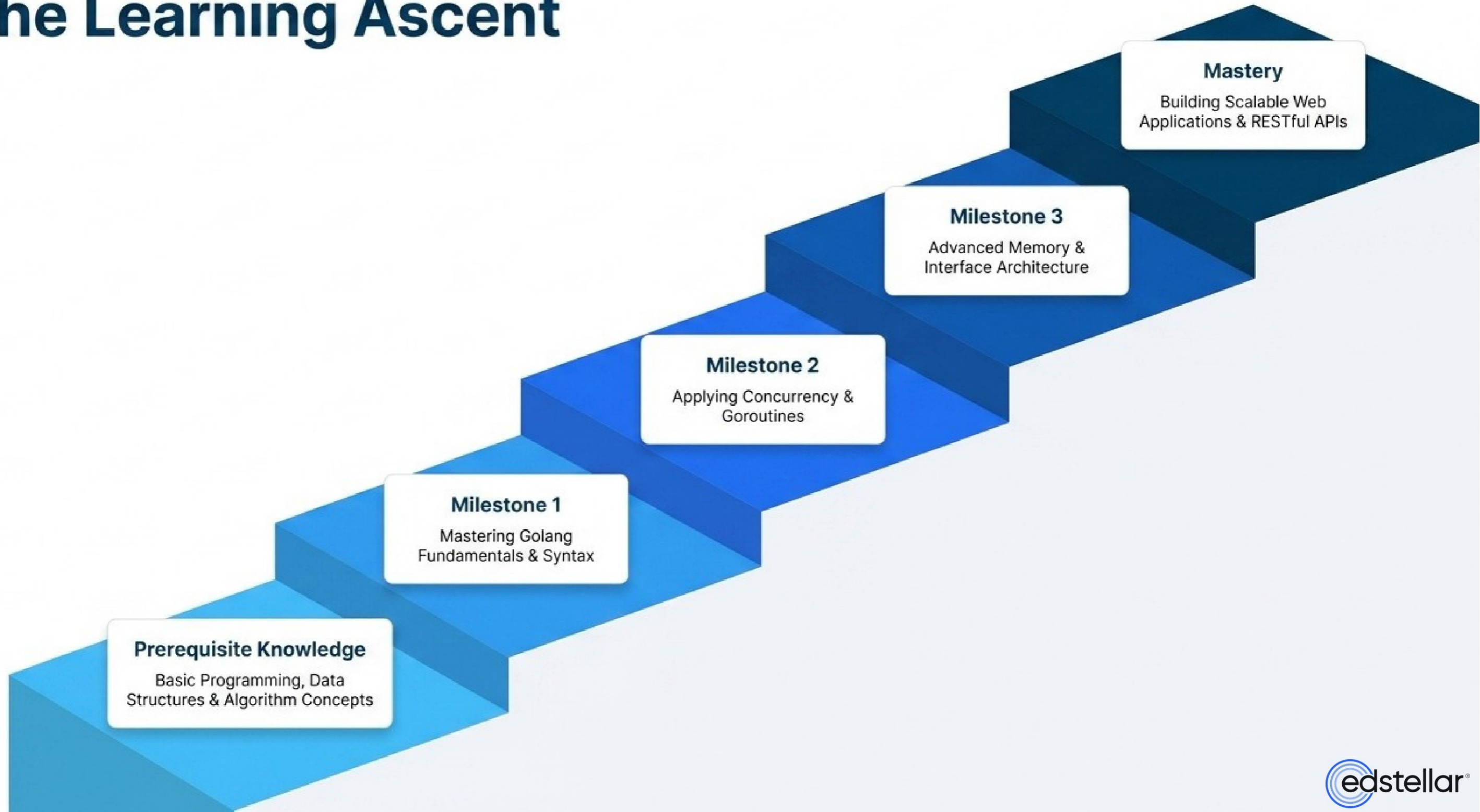
10,000+ Trainers



Recognition

Certificate Of Completion

The Learning Ascent



Curriculum Architecture

Phase 1: Core Go Programming

- Intro
- Setup
- Structure
- Data Types
- Control Flow
- Functions
- Packages

Establishing the structural foundation of Go.



Phase 2: Concurrent Processing

- Goroutines
- Concurrency Models
- Channels

Unlocking Go's power for simultaneous operations.

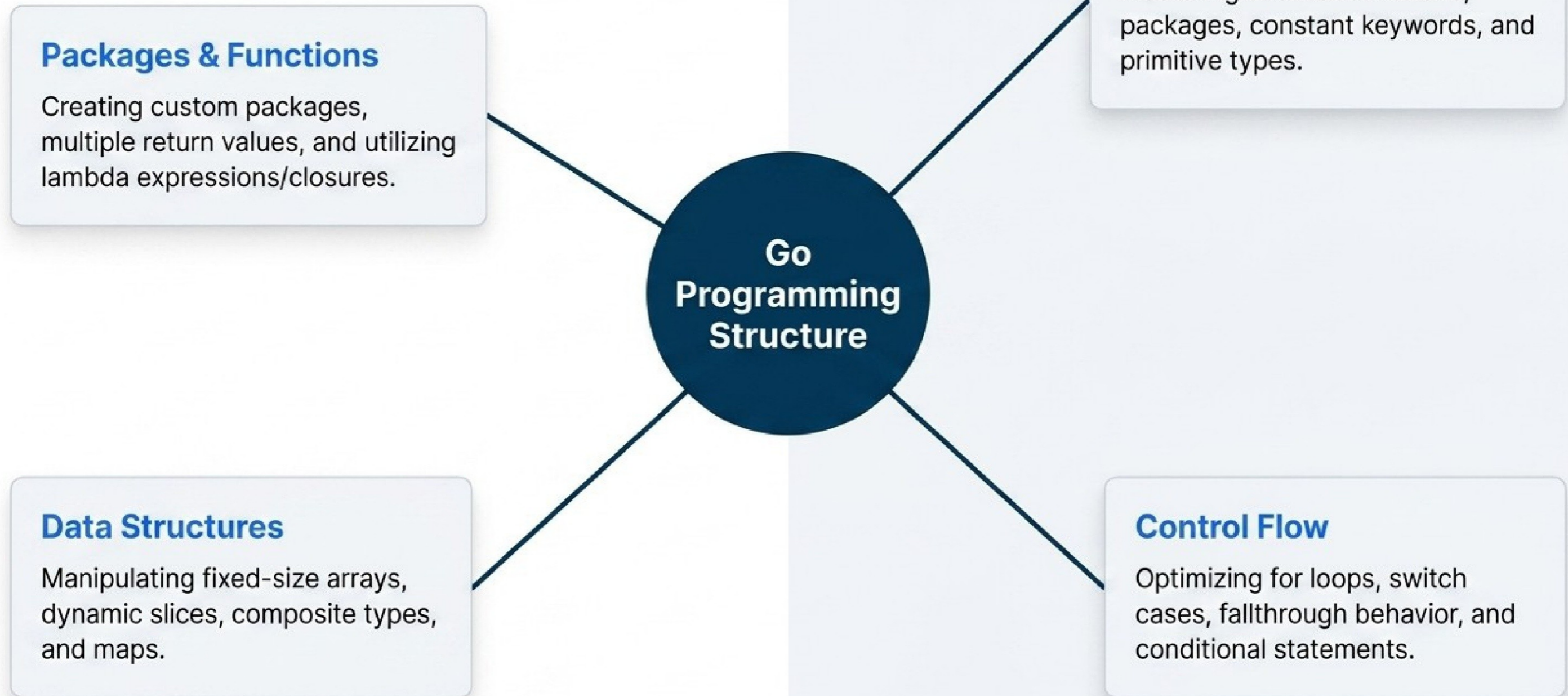


Phase 3: Advanced Architecture

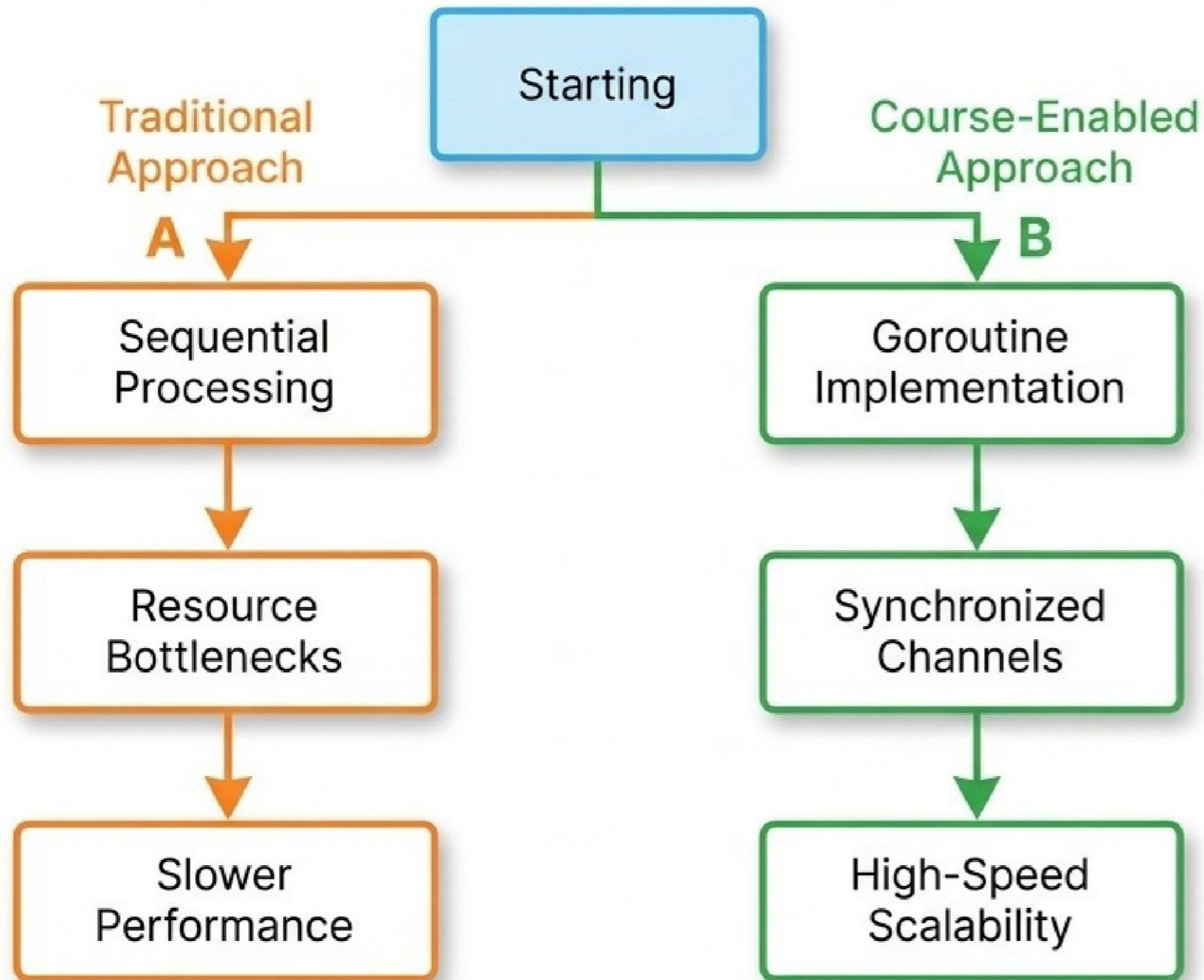
- Methods
- Interfaces
- Pointers
- Structures
- Error Handling

Designing robust, reliable, and scalable enterprise systems.

Phase 1: Core Fundamentals



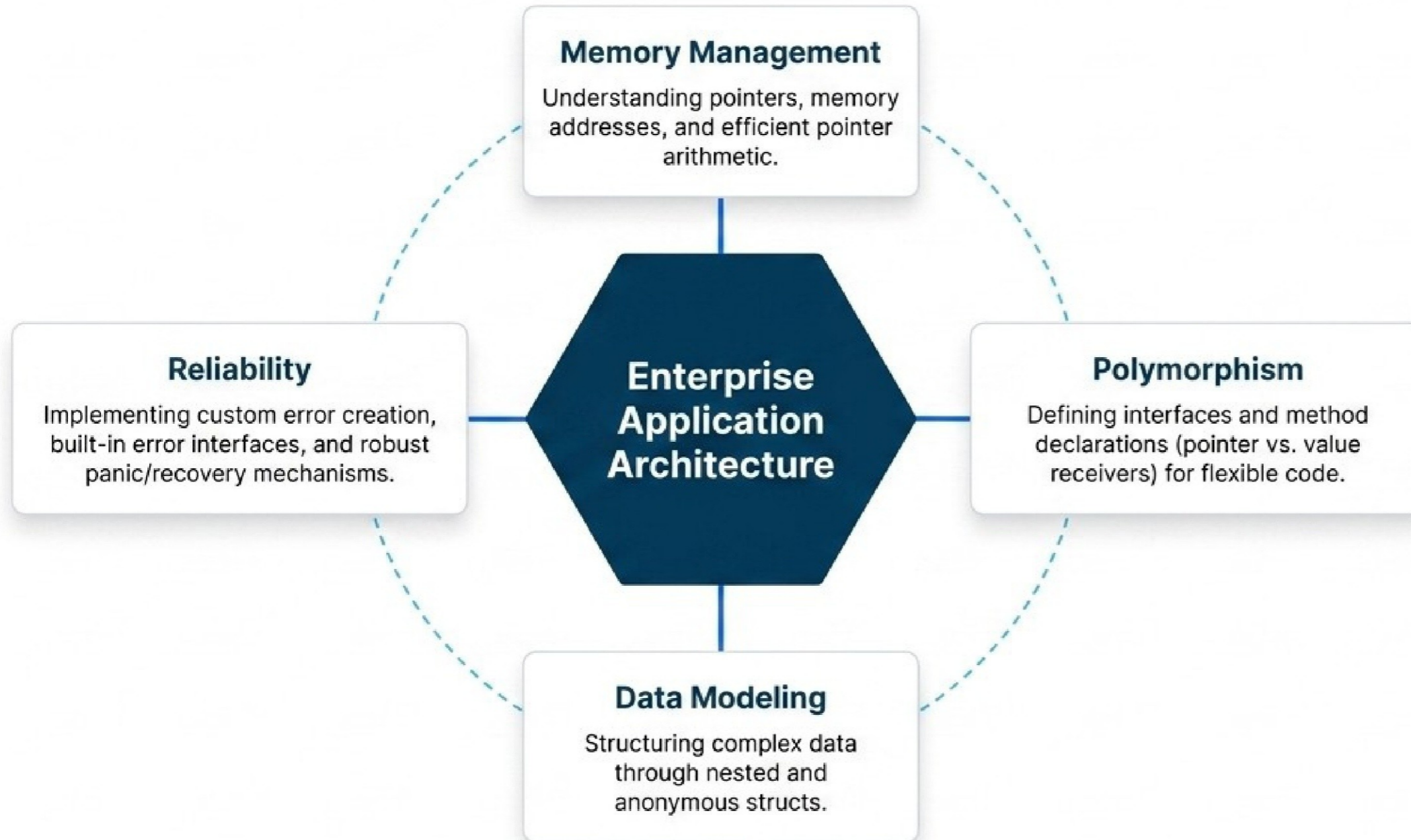
Phase 2: Mastering Concurrency



Key Technical Topics

- 1. Goroutine Creation & Management**
Concurrency vs. parallelism, synchronization pools.
- 2. Concurrency Models**
Locks, mutexes, deadlock prevention.
- 3. Channel Operations**
Make function, buffered vs. unbuffered channels.
- 4. Data Transmission**
Sending/receiving data, closing channels.

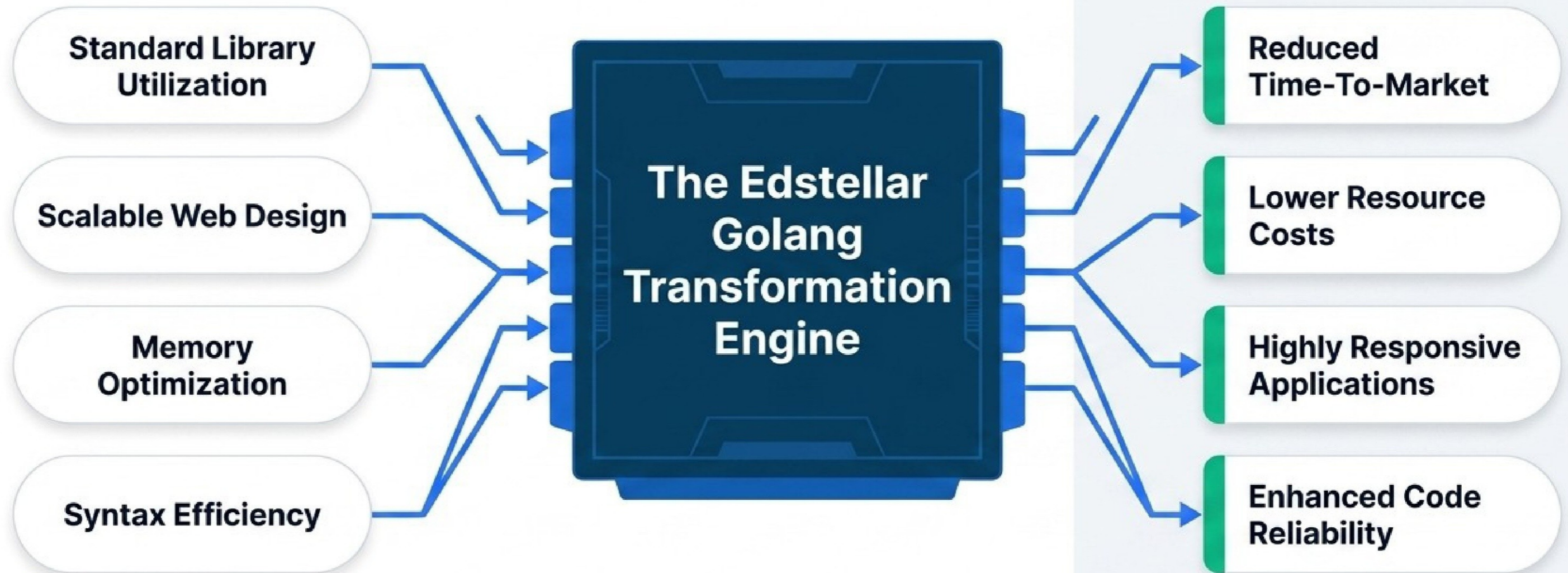
Phase 3: Advanced Architecture



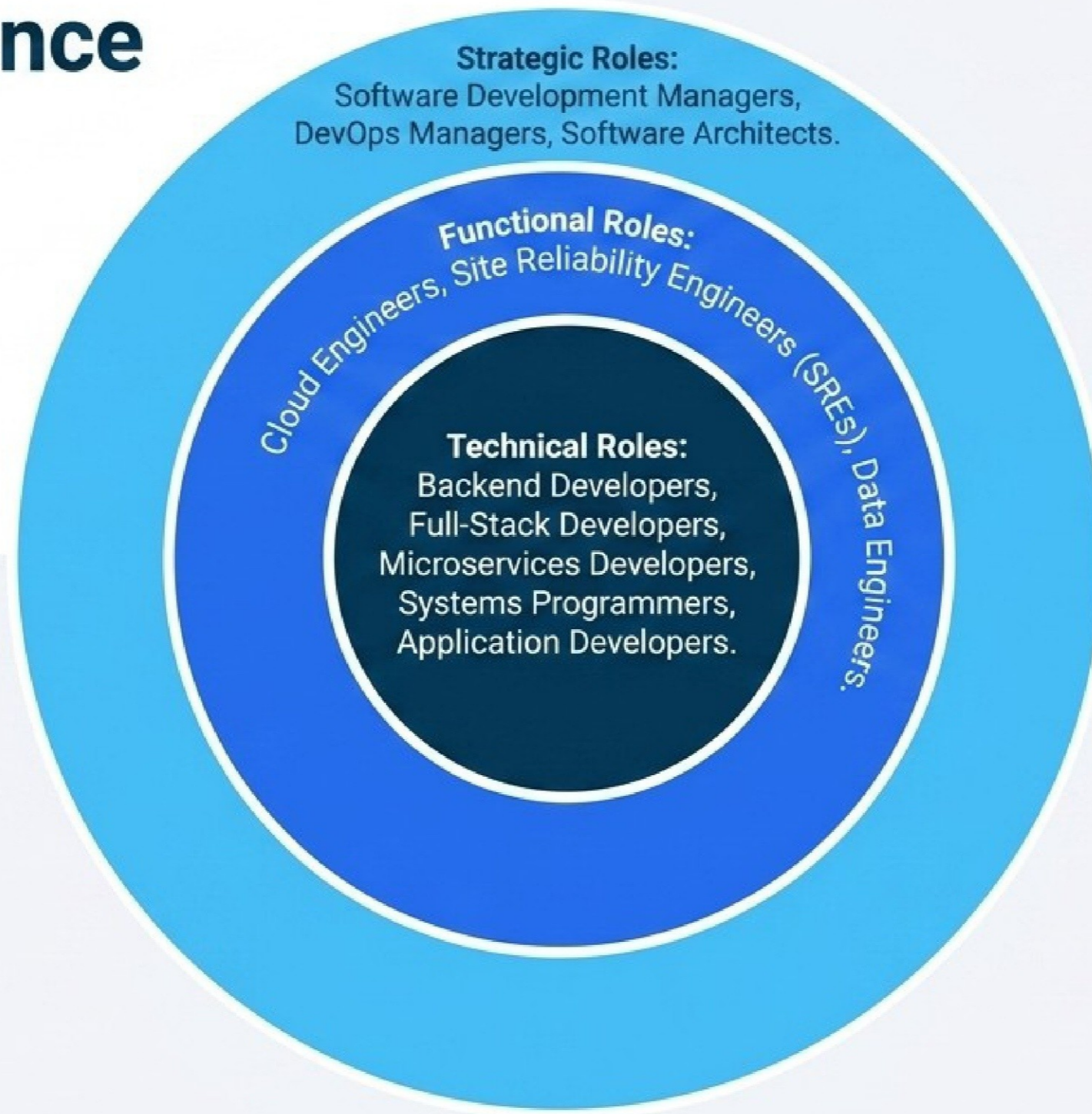
Diagnostic Matrix

Challenge Area	Current State	Course Solution
Sluggish System Performance	Underutilized computing resources causing bottlenecks	Concurrency Principles & Goroutines
Software Instability	Unhandled exceptions causing system crashes	Robust Error Handling & Recovery Mechanisms
Data Vulnerability	Weak data integrity protocols	Go's Inherent Security Features

The ROI Engine



Target Audience Alignment



Delivery Modalities



Virtual Live Instructor-Led

- Global scalability for remote teams.
- Consistent training quality across regions.
- Participants learn in their own space with zero travel requirements.



On-Site Face-to-Face

- Immersive hands-on interaction.
- Workplace environment tailored to specific learning requirements.
- Immediate doubt clarification.



Off-Site Face-to-Face

- Distraction-free focus away from usual operations.
- Enhanced team bonding and collaboration.
- Elevates employee morale and engagement.

Proof of Impact

“Attending the Golang training was transformational for my professional development... The hands-on exercises were immediately applicable to my work. My productivity and technical capabilities have increased dramatically since applying these concepts. This course has become foundational to my continued success.”

Guy Davidson

Senior Software Engineer

Technology Consulting Services Company

Global Reach



100+

Countries Served with
Delivery Capability

10+

Languages Supported

(Including English, Español, 普通话, Deutsch,
العربية, Português, हिंदी, Français, 日本語, and
Italiano)

Certificate of Completion

Certificate is nament to

John

Signature



Begin Your Team's Transformation

 contact@edstellar.com

 edstellar.com