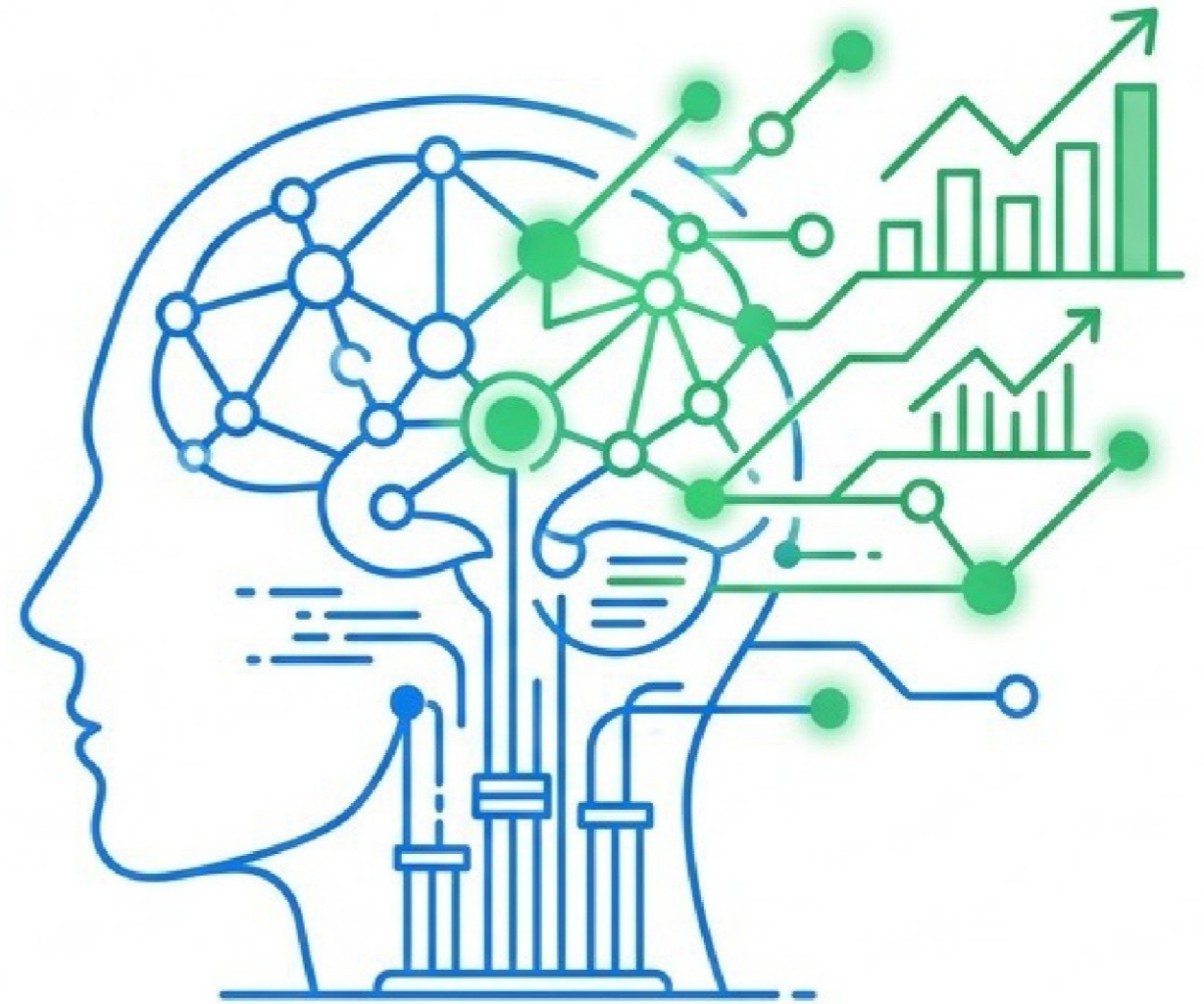
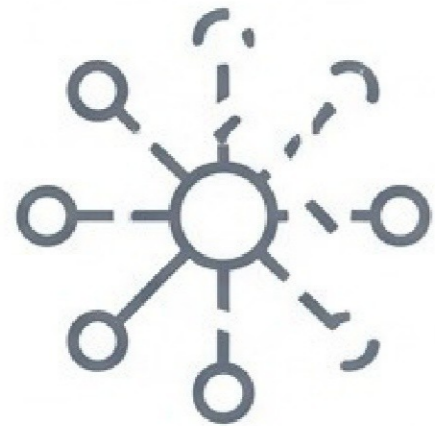


# Emotional Intelligence in Leadership Corporate Training Course

Drive Team Excellence with Emotional Intelligence in Leadership



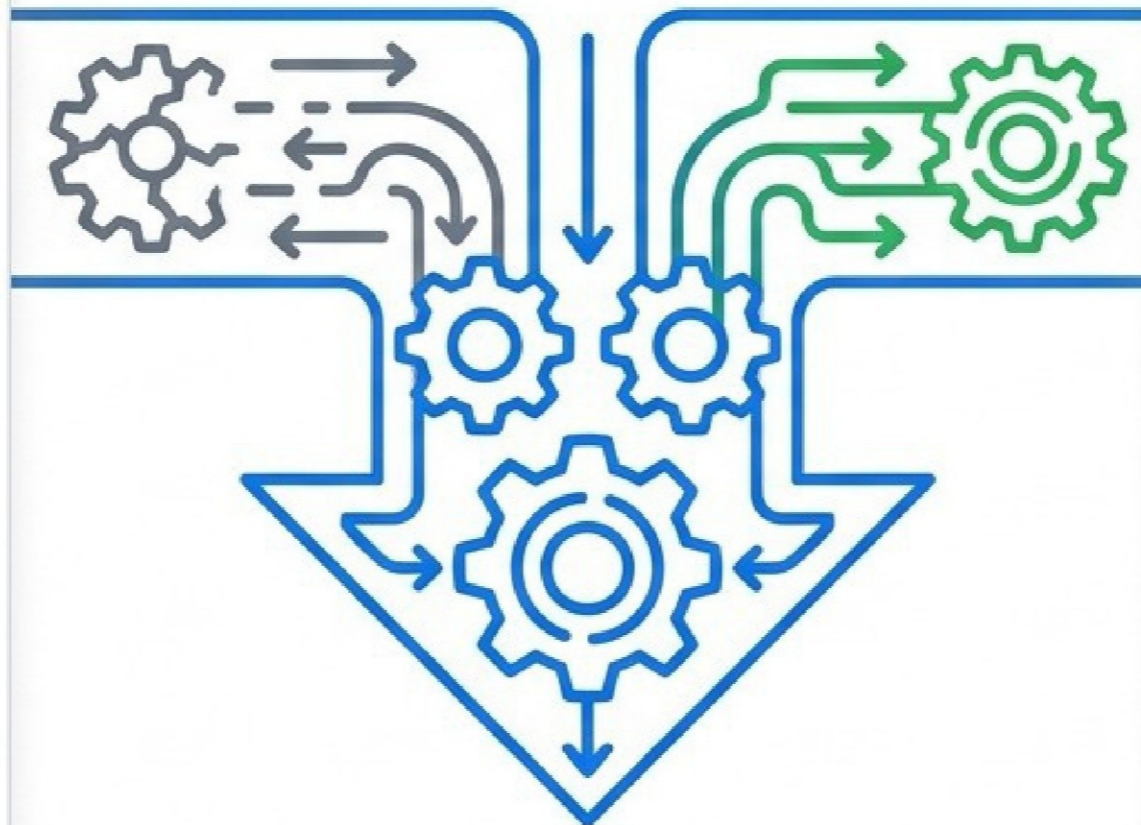
# The Paradigm Shift in Leadership Capability



## Reactive Management

- High team stress levels
- Unmanaged organizational conflict
- Low engagement
- Transactional communication

## The Activation Engine



## Edstellar Instructor-Led Emotional Intelligence Training



## Strategic Leadership

- ✓ Enhanced team cohesion
- ✓ Increased organizational resilience
- ✓ Empathetic communication
- ✓ Optimal performance gains

# Operational Architecture of the Learning Experience



8 - 16 hrs



Instructor-led  
Group Training



Virtual or  
On-site or  
Off-site

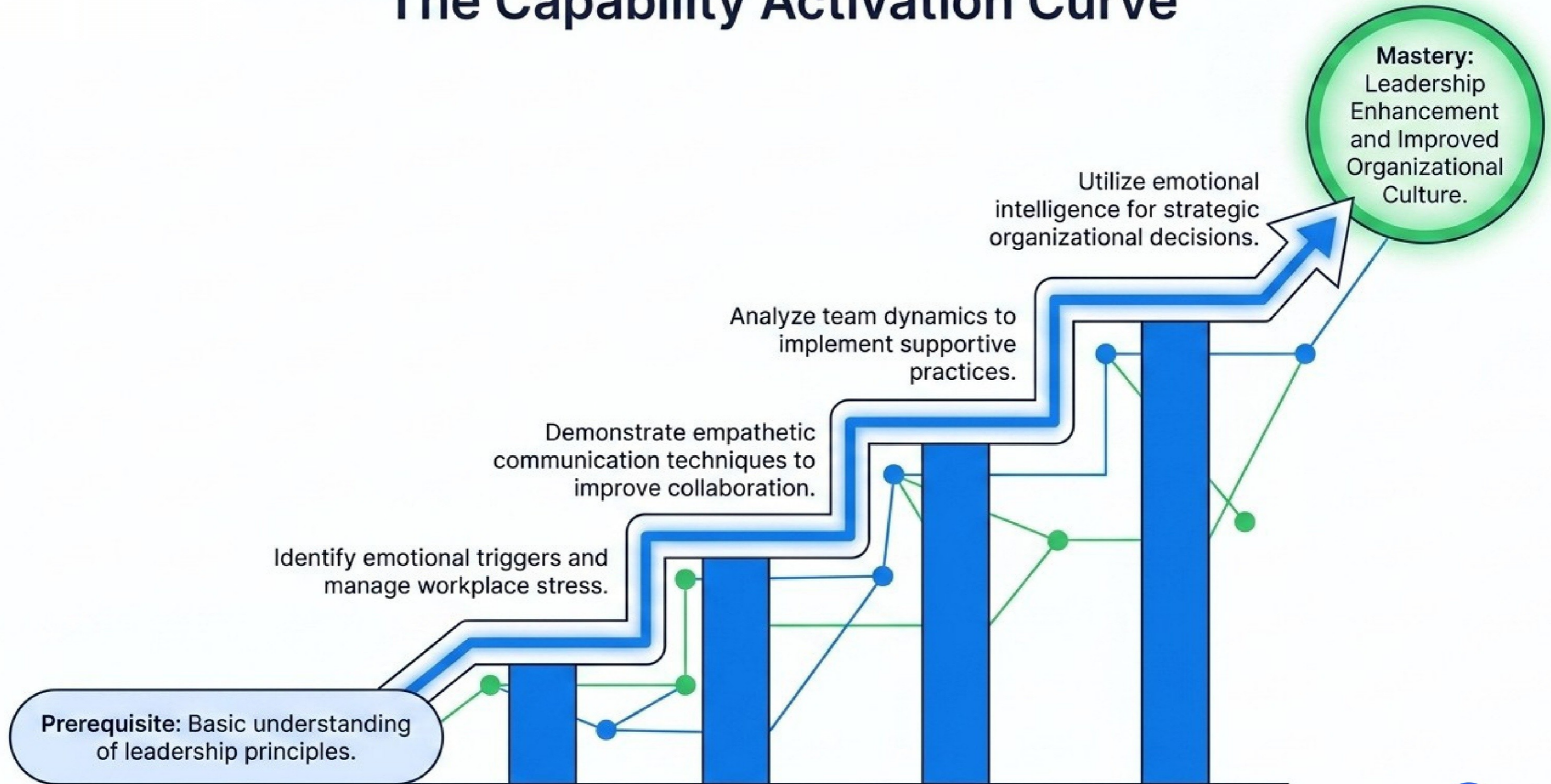


10,000+  
Trainers  
globally

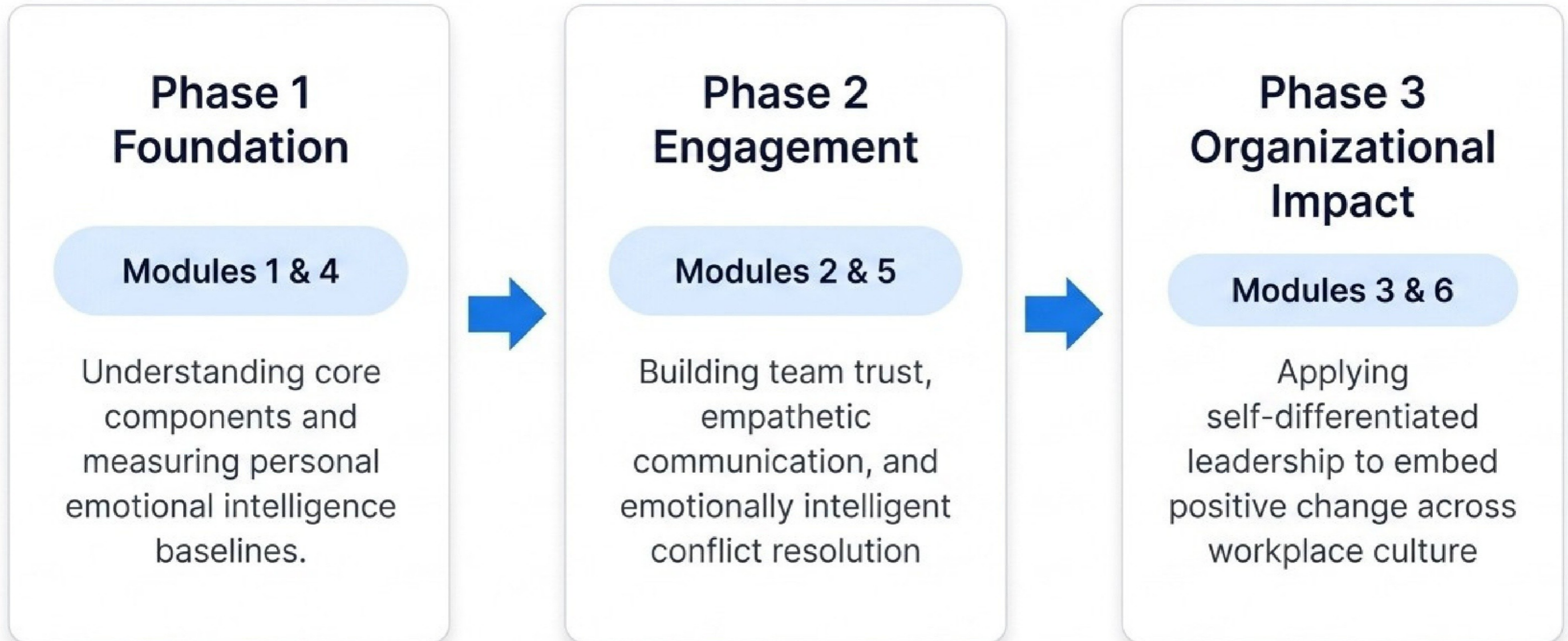


Course  
Completion  
Certificate

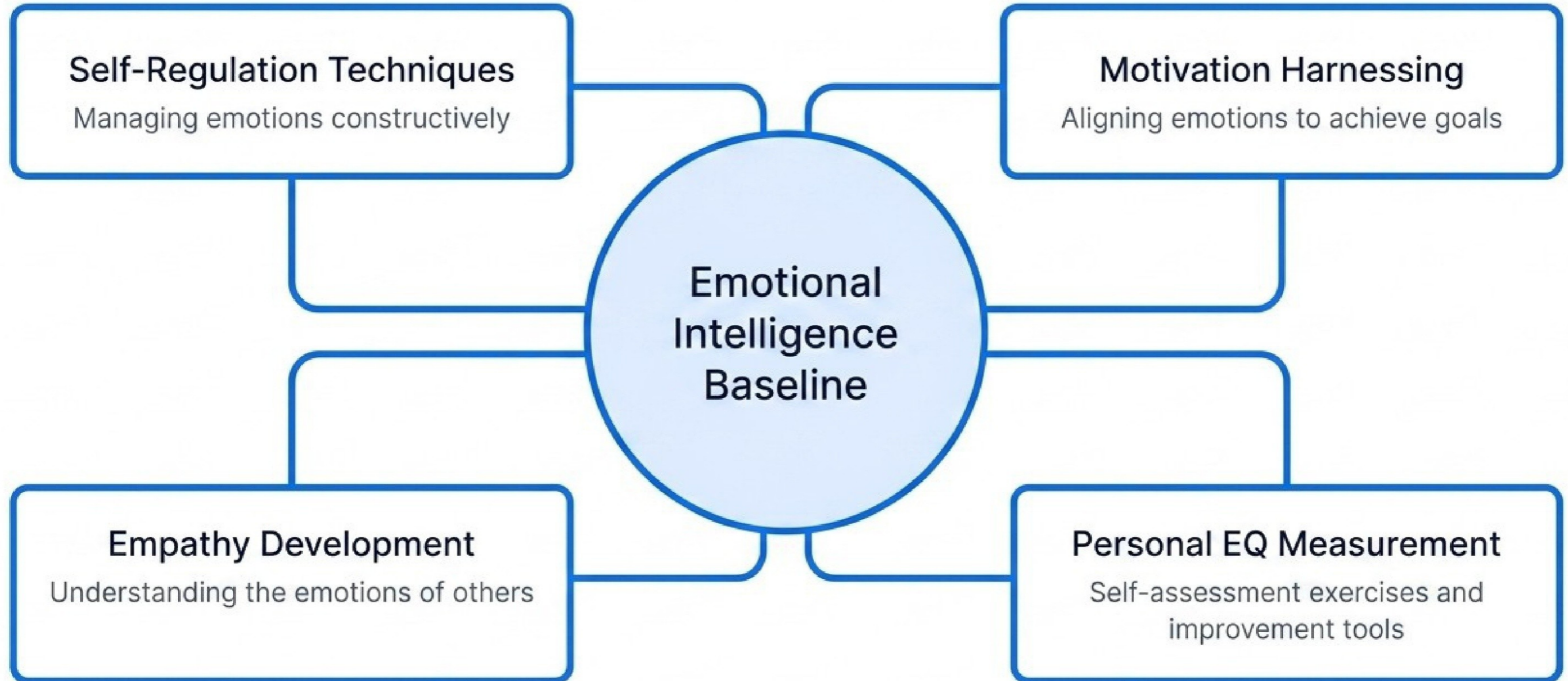
# The Capability Activation Curve



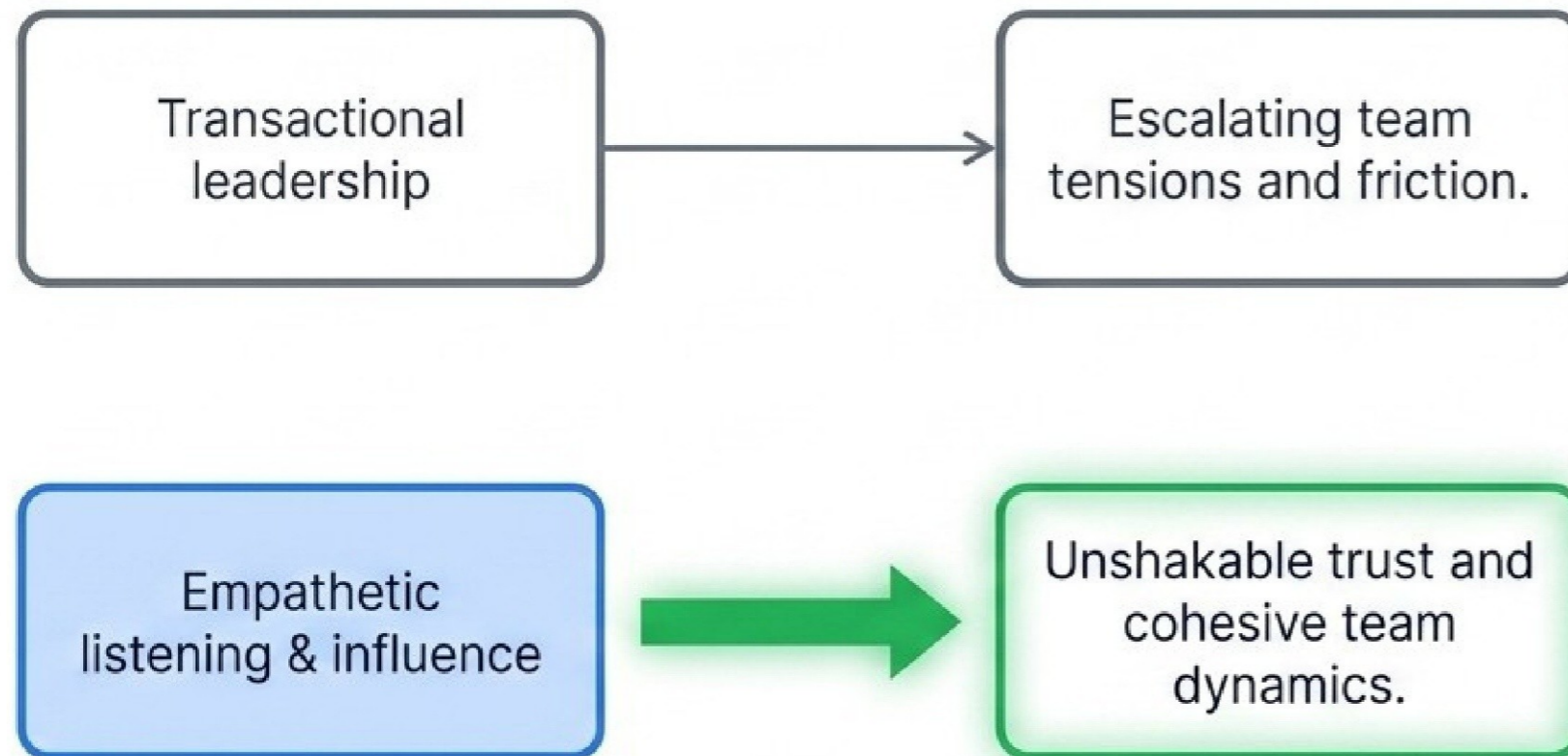
# The Neuro-Strategic Curriculum Framework



# Phase 1 Foundational Self-Awareness and Assessment



# Phase 2 Relational Engagement and Behavioral Influence



## Core Behavioral Capabilities



1. Conflict Resolution Strategies



2. Emotionally Intelligent Negotiation

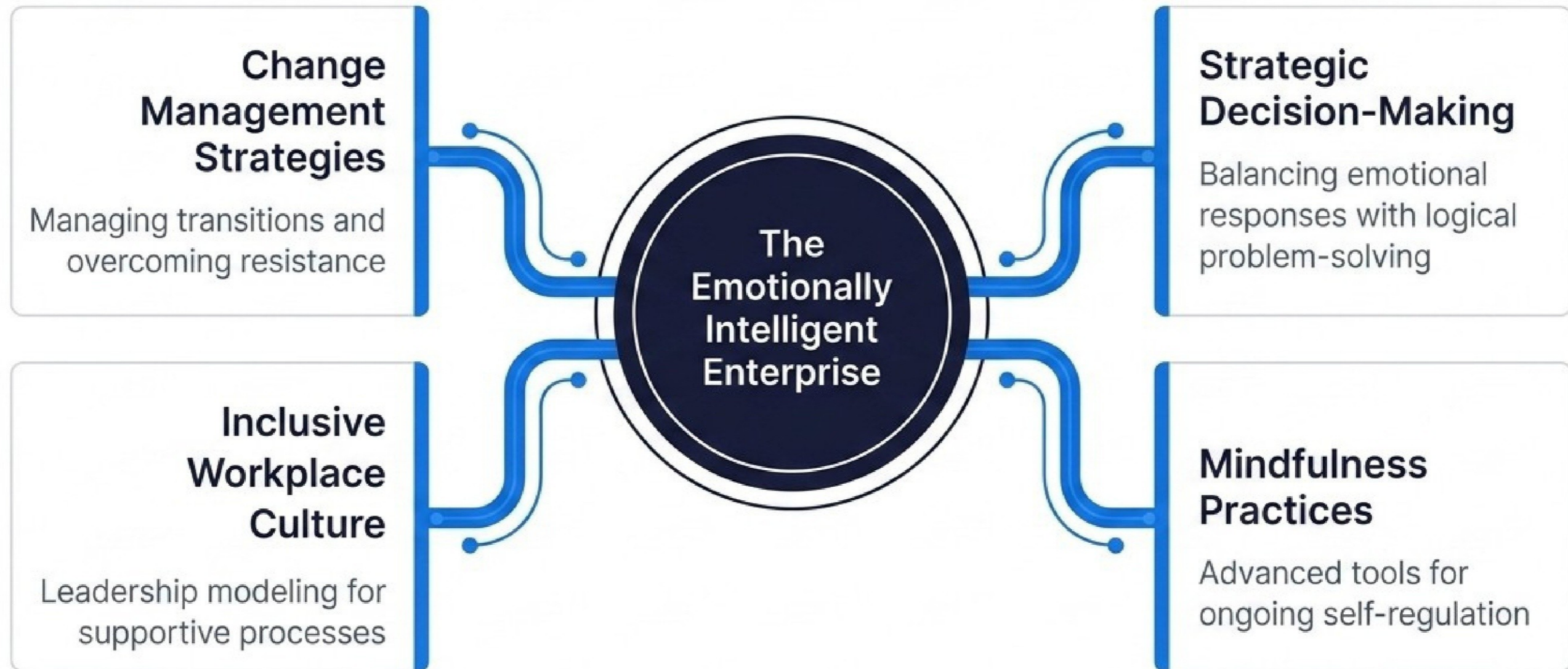


3. Authentic Leadership Presence



4. Advanced Rapport Building

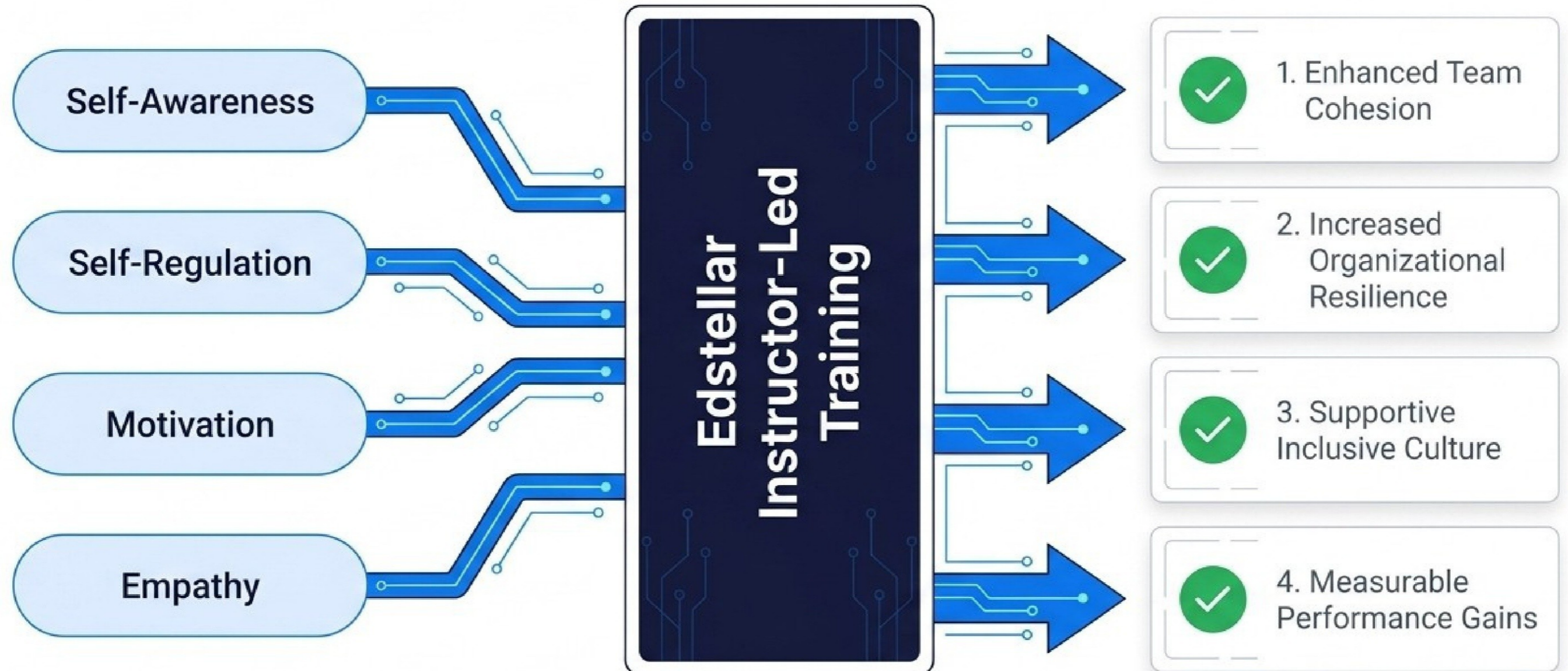
# Phase 3 Strategic Organizational Application



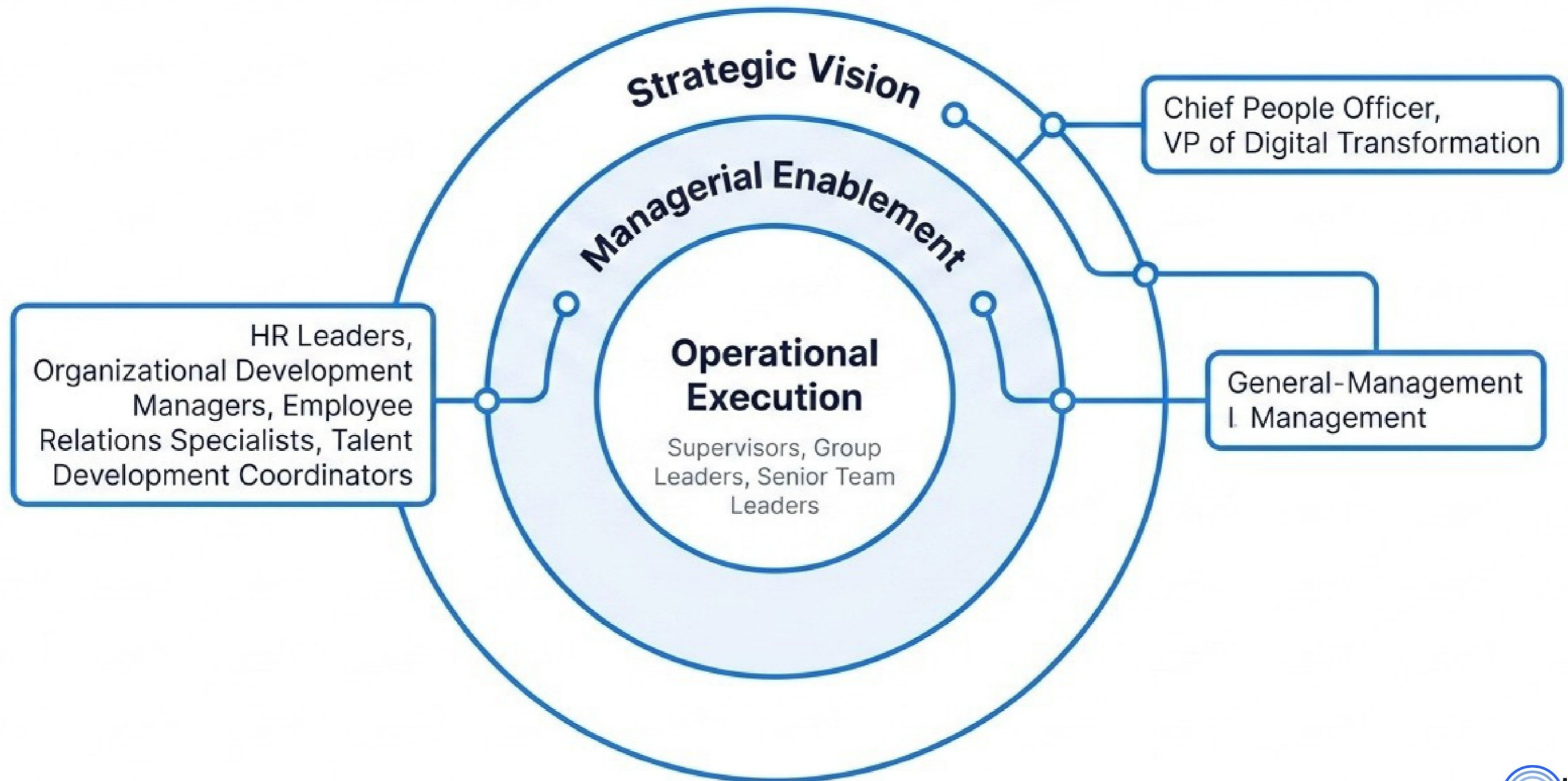
# The Capability Diagnostic Matrix

| Key Skill Acquired        | Target Role Application                           | Enterprise Business Outcome   |
|---------------------------|---|---|
| Stress Management         | Healthcare, education, and leadership             | Fosters positive work environment, well-being, and decision-making.         |
| Conflict Resolution       | Management, human resources, and customer service | Fosters robust collaboration and maintains positive team dynamics.          |
| Strategic Decision-Making | Leaders, managers, and executives                 | Drives effective planning, resource allocation, and organizational success. |

# The Organizational Transformation Engine



# Target Audience Alignment



# Scalable Deployment Methodologies



## Virtual Live Instructor-Led

- ✓ Seamless integration into schedules
- ✓ Consistent quality across locations
- ✓ High scalability for large groups



## On-site Face to Face

- ✓ Tailored workplace environment
- ✓ Improved team collaboration
- ✓ Direct interaction and insights



## Off-site Face to Face

- ✓ Distraction-free learning engagement
- ✓ Enhanced team bonding
- ✓ Boosts employee morale

# Proof of Impact

*“Edstellar’s Leadership training programs have significantly strengthened our management team’s strategic thinking, adaptability, and decision-making capabilities. The sessions blend real-world business scenarios with actionable leadership frameworks, enabling leaders to navigate change, guide their teams with clarity and confidence, and drive a long-term vision aligned with organizational goals.”*

**Shalini Menon**

Chief People Officer

A Global Technology Enterprise

# Global Operational Capacity

**100+**

Countries with  
Delivery Capability

**10+**

Languages Available  
for Localized Training

# Activate Your Leadership Capability Today

Help your employees build lasting capabilities that translate into real performance gains. Scale your training from small teams to global enterprises today.

[edstellar.com](https://edstellar.com) | [contact@edstellar.com](mailto:contact@edstellar.com)

