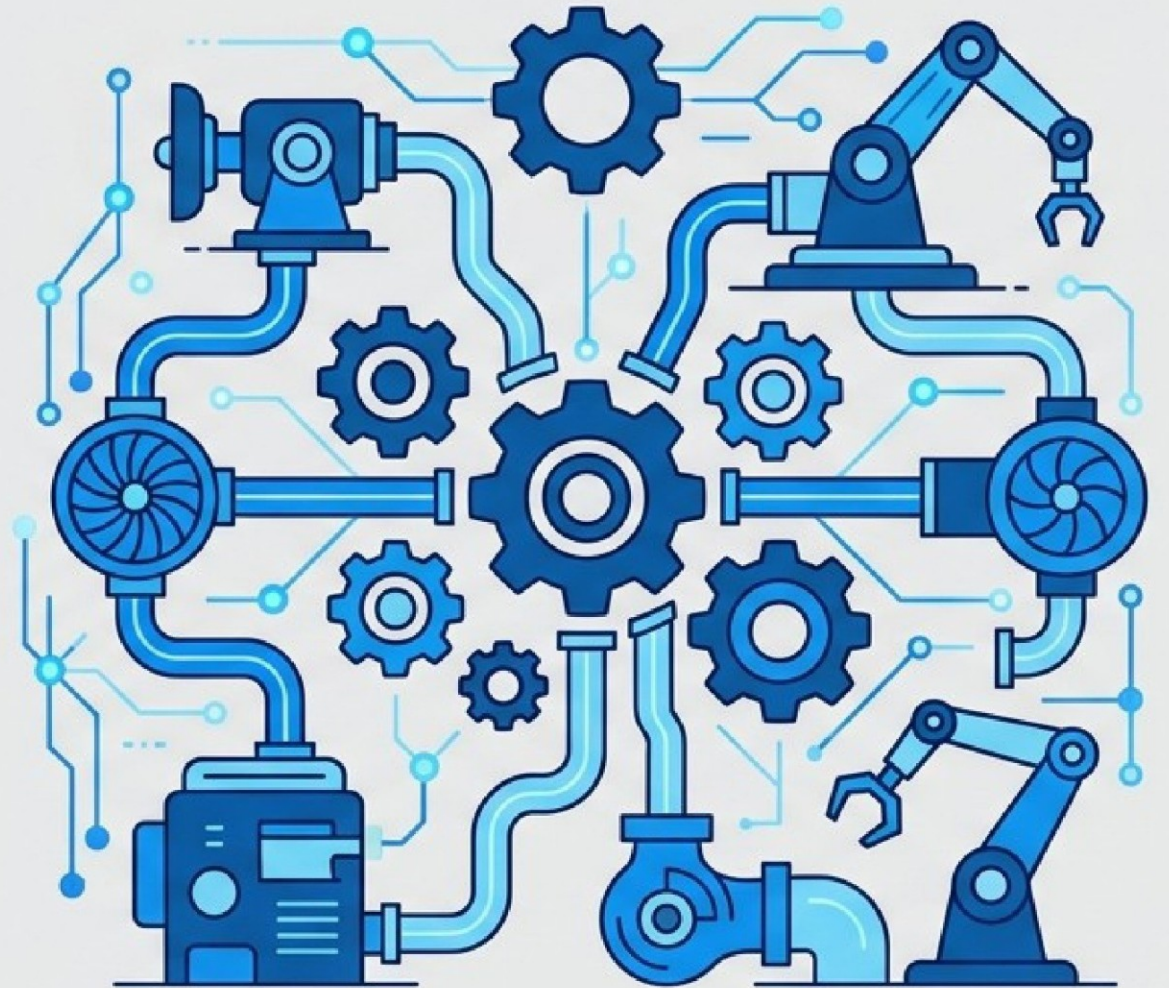


# Maintenance and Reliability: The Capability That Changes Everything

Empowering teams to optimize equipment performance, minimize downtime, and build a proactive maintenance culture.



## The Reactive State

High incidence of unplanned downtime

Unpredictable maintenance costs

Reactive firefighting over strategic planning

## The Turning Point



**Edstellar  
Maintenance  
& Reliability  
Corporate Training**

## The Proactive Capability

✓ Optimized equipment performance & longevity

✓ Real-time condition monitoring deployed

✓ Data-driven Reliability-Centered Maintenance

# Course At-a-Glance



**8 - 16 hrs**

Course Duration



**Instructor-Led**

Group Training



**Flexible Delivery**

Virtual / On-site / Off-site



**10,000+**

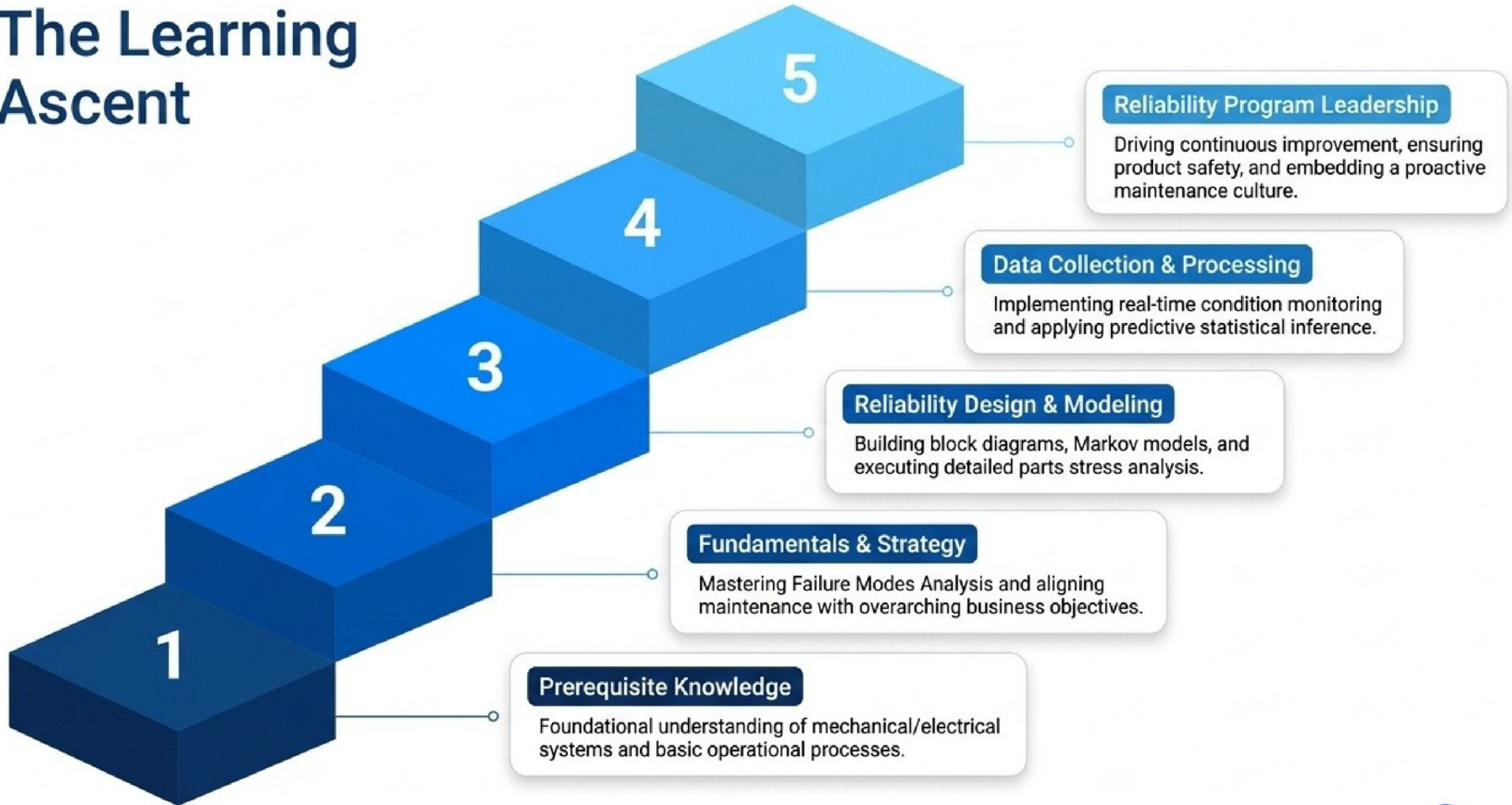
Global Expert Trainers



**Certificate**

Awarded Upon Completion

# The Learning Ascent



# Core Capabilities Matrix

Translating technical curriculum into deployable on-the-job skills.



## Failure Modes Analysis (FMA)

Systematically identifying potential failure points to drastically reduce operational risks.



## Maintenance Planning

Scheduling critical activities to minimize downtime and ensure optimal resource utilization.



## Workflow Optimization

Streamlining tasks and standardizing procedures to dramatically reduce execution costs.



## Scheduling Tools Integration

Combining disparate scheduling software into unified, high-visibility digital workflows.



## Condition Monitoring

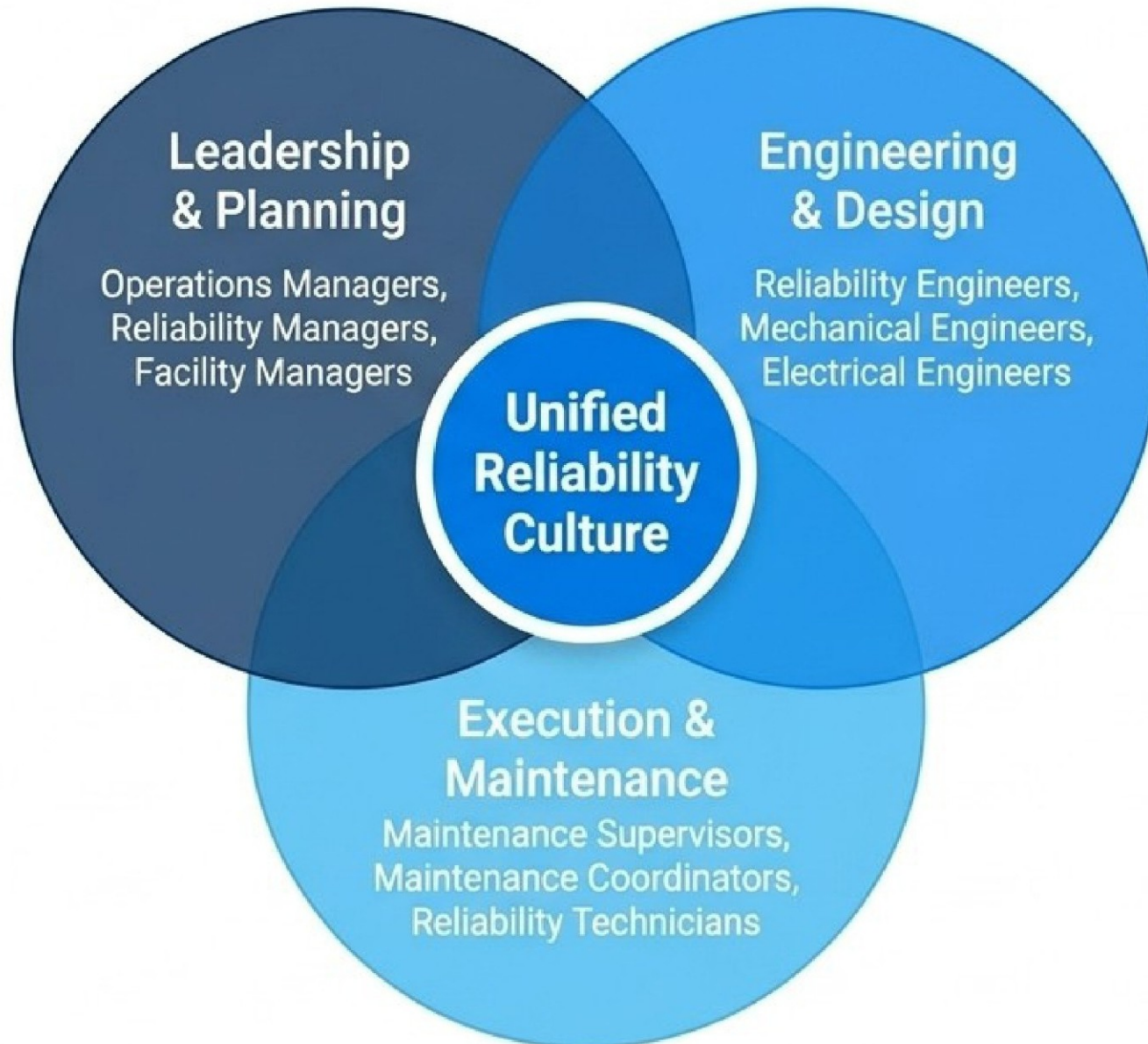
Assessing real-time equipment health through live data streams to predict and preempt failures.



## Proactive Maintenance

Anticipating faults and executing regular upkeep to completely eliminate reactive firefighting.

# Target Audience Diagnostic



**Cross-functional training ensures engineering, execution, and leadership share the exact same predictive frameworks and vocabulary.**

# Curriculum Architecture: The Strategic Pillar

## Introduction to Maintenance

History, evolution, and conducting rigorous cost-benefit analysis.

## Strategic Management

Aligning maintenance with business objectives, strategic planning, and defining performance KPIs.

## Reliability Program Management

Establishing scopes, defining organizational roles, and deploying continuous improvement tools.

## Product Safety & Liability

Navigating safety regulations, risk assessments, and understanding the legal implications of failures.

**Crucial Outcome: Aligning operational maintenance strategy directly with executive business objectives.**

# Curriculum Architecture: The Engineering Pillar



## Reliability Design Techniques

Translating requirements into design considerations; optimizing trade-offs and reliability allocation.



## Parts & Systems Management

Component selection criteria, quality ratings, and advanced system integration analysis.

### The Engineering Feedback Loop



## Maintainability Analysis

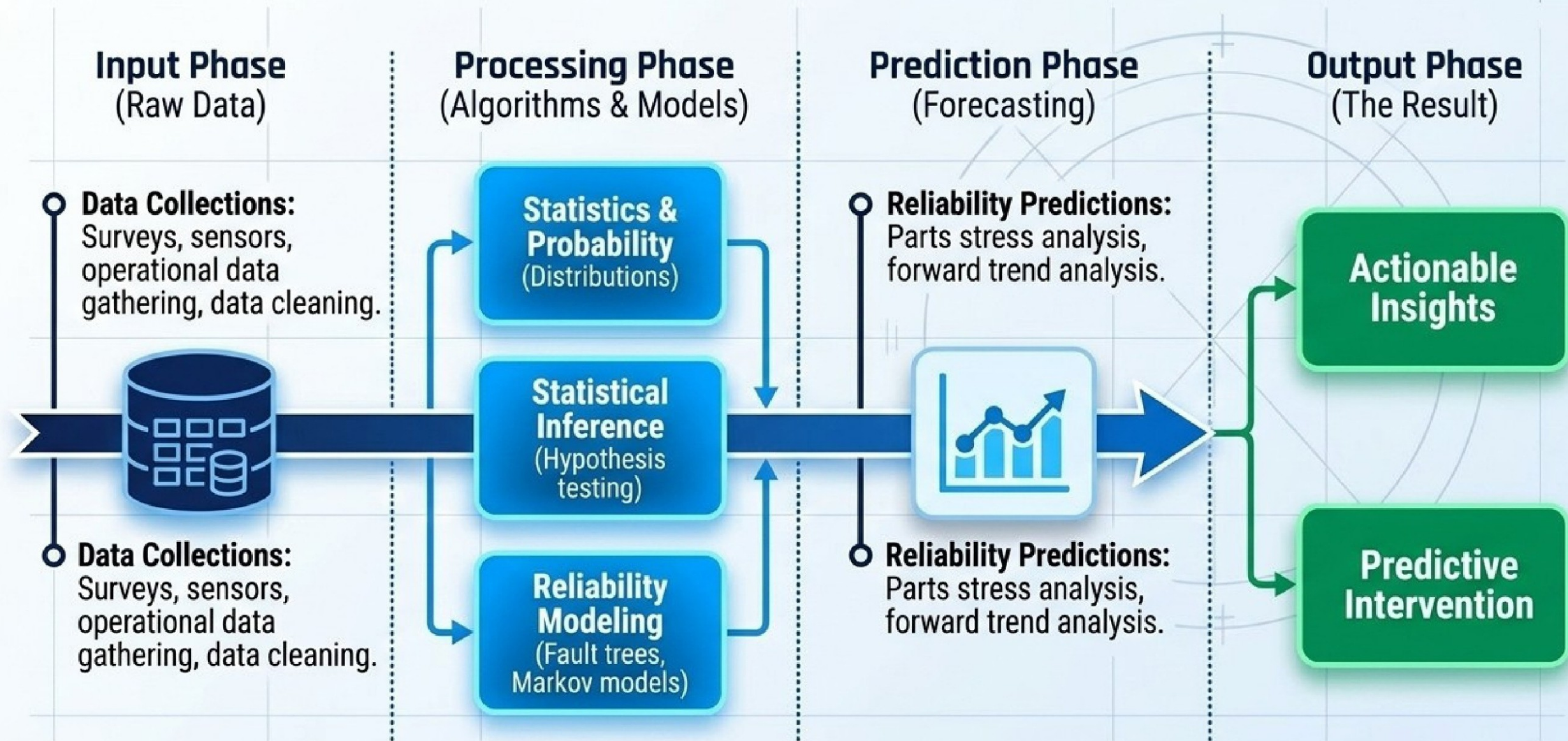
Executing FMEA/FMECA, maintainability predictions, and extracting lessons from industry case studies.






## Development & Product Testing

Designing iterative tests, environmental tests, and comprehensively analyzing test data.

# Curriculum Architecture: The Data & Predictive Pillar



# Delivery Mode Comparison Matrix

Virtual Live (VILT)	On-site (In-house)	Off-site
		
Standardized, scalable, remote workspace integration.	Immersive, tailored to specific company tools and physical assets.	Uninterrupted focus, team bonding, intensive knowledge retention.
Join from any location with interactive tools to keep remote learners engaged. Zero travel required.	Live demos and hands-on practice directly on the factory floor with immediate trainer access.	Removes teams from daily firefighting. Built-in group activities boost morale and signal corporate commitment.

# Global Delivery at Scale



## 100+ Countries

Consistent quality delivered anywhere in the world, scaling effortlessly to multinational teams.



## 10+ Languages

Native delivery including English, Español, 普通话, Deutsch, and more for maximum comprehension.



## 2,000+ Programs

Industry-ready curriculum backed by an elite, rigorously vetted global trainer network.

# Transforming Training into Tangible Business Results



# Enterprise Licensing Packages

## Starter



**120 Licenses**

64 hours group training

Tailored for SMBs.

Most Popular

## Growth



**320 Licenses**

160 hours group training

Ideal for growing and  
mid-market organizations.

## Enterprise



**800+ Licenses**

400+ hours group training

Designed for large,  
multi-national corporations.

Custom and unlimited enterprise licensing parameters available upon request.

# Proven Impact & Social Proof



The Maintenance and Reliability course revolutionized how I approach my daily responsibilities. I've successfully implemented these advanced techniques in production environments with measurable impact.

---

**Barton Crawford**

Lead Analytics Engineer, Neural Network Development Platform



Provided our team with comprehensive industry best practices capabilities we immediately put into practice... Our stakeholder satisfaction and NPS scores reached unprecedented all-time highs. Fundamentally improved our team's performance metrics.

---

**Hadi Jamal**

Senior Database Administrator, Deep Learning Solutions Firm

# Initiate Your Team's Transformation

- 1** Download the training requirements template.
- 2** Select custom modules and specify team size.
- 3** Receive a tailored enterprise proposal.

**Ready to scale  
your reliability?**

---

contact@edstellar.com | +1 682 297 4830

