



**STAFFWEAR  
2024/2025**



## *Contents*

3	Limitless Staffwear
4	Shirts
5	Layers
6	Baselayer
6	Staff Top
7	Hooded Top and Gilet
8	Active Jacket
9	Puffer Jackets
10	Sublimated Rain Jacket
10	Sublimated Staff Puffer Jacket
11	Touchline coat
11	Staff Subcoat
12	Sports Robe
13	Shorts
14	Training pants and leggings
15	Personalisation
16	Fabrics
17	Fabrics cont.

# limitless®







## *Limitless Staffwear*

### Staffwear

We know how important staff kit is. It's worn every day and has to be up to the job. Our staffwear range shares the same quality design and fabrics as all our kit, and with most items in stock and an online portal for easy ordering, even customised items can be shipped immediately. Wearing the same brand as your students promotes unity and community, ensuring they know they're wearing the very best.

### Limitless

Limitless is the #1 sportswear brand in independent schools. Our goal is for every young person to develop an active, healthy lifestyle. Limitless works to provide you with comfortable, high-performance kit, enabling your team to play at its very best and focus on the pitch, court or field. We can provide curriculum kit and bespoke teamwear, so the whole school community can be Limitless.

### Design & Fit

Every item of clothing is designed and tested exhaustively for size and fit, with a clear brief that it wears hard, looks great and is comfortable. The same hard-wearing, technical fabrics are used for our staffwear as well as our curriculum and teamwear.

### Fabrics

We don't compromise on the quality of fabrics chosen, ensuring they're incorporating the very best breathability, stretch, durability and protection from the elements. Our buyers work with global centres of excellence at the forefront

of technical innovation and are continually monitoring and updating the best options, in line with advancements.

### Ordering Staffwear

With most items held in stock, you can order through your own school staff portal online. Your Account Manager can also help with any bespoke, sublimated orders.

### Curriculum kit

Limitless are experts at kitting out the whole school. Our curriculum kit embodies our mission to make great sports kit available to all. Held in stock all year, ready for immediate delivery, Limitless can help instill pride and confidence in the entire school community. Please get in touch to find out more.

### Teamwear

Whether it's for a tour, a big 1st team final or to differentiate teams, our bespoke sportswear can be produced in numerous colours, designs and finishes. Delivering pride and identity, they make a lasting impression. Specialist items, including rowing kit and sublimated netball dresses or rugby shirts, are all possible.

Whatever you need for teamwear, we can make them to order and deliver in 6 - 8 weeks. Please see our Teamwear brochure for more details.



Shirts

Unisex Sizes
36"
38"
40"
42"
44"
46/48"
50/52"

**Fitness T-shirt**  
**Fabric:** Hydrocool Smooth  
**Fit:** Unisex and Women's Fit



- Designed to wick moisture away from the skin
- Self-coloured stitching



Women's Sizes
32"
34"
36"
38"
40"
42"
44"
46/48"

limitless®

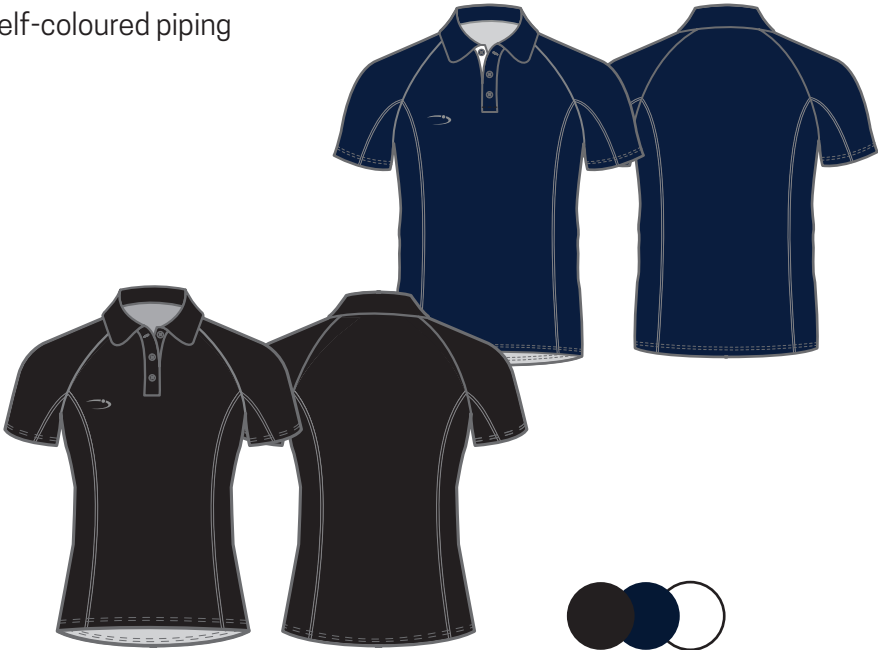


Unisex Sizes
36"
38"
40"
42"
44"
46/48"
50/52"

**Polo Shirt**  
**Fabric:** Hydrocool Lite and  
Cotton Mix  
**Fit:** Unisex or Women's Fit



- Self-coloured piping



Women's Sizes
32"
34"
36"
38"
40"
42"
44"
46/48"



Layers

Unisex Sizes
36"
38"
40"
42"
44"
46/48"
50/52"

**Midlayer**  
**Fabric:** Thermotex  
**Fit:** Women's and Unisex Fit



- 1/4 zip funnel neck
- Fine fleece inner layer

Women's Sizes
32"
34"
36"
38"
40"
42"
44"
46/48"



**Sublimated Midlayer**  
**Fabric:** Thermotex  
**Fit:** Unisex



- A sublimated version of the standard midlayer, allowing a choice of colour and design



Sublimated, available in any colour/design

limitless®

# Baselayer

Unisex Sizes
30/32"
34/36"
38/40"
42/44"

**Baselayer top**  
**Fabric:** Climaskin  
**Fit:** Unisex

- Vinyl artwork can be applied
- Flat seams for optimum comfort
- Nylon/Elastane mix for freedom of movement



limitless®

# Staff Top

Unisex Sizes
36"
38"
40"
42"
44"
46/48"
50/52"

**Mesh Staff Top**  
**Fabric:** Sirocco and mesh  
**Fit:** Unisex and Women's Fit

- Sublimated, allowing a choice of colour/design
- Highly breathable sirocco fabric with a performance mesh back



Women's Sizes
32"
34"
36"
38"
40"
42"
44"
46/48"



Sublimated, available in any colour/design

Button placket collar available





# Hooded Top and Gilet

Sizes
32"
34"
36"
38"
40"
42"
44"
46/48"
50/52"

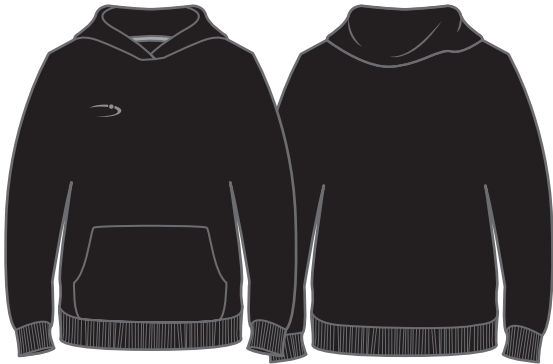
## Hooded Top

**Fabric:** Pro-Jersey

**Fit:** Unisex



- Featuring open pocket at the front
- Weltd hem
- Designed with dropped shoulders, for relaxed fit



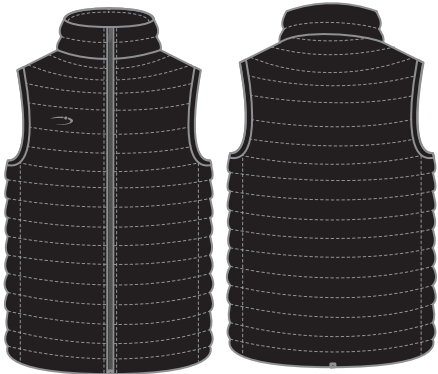
Unisex Sizes
36"
38"
40"
42"
44"
46/48"
50/52"

## Lightweight Gilet

**Fabric:** Stormtex Lite

**Fit:** Women's and Unisex Fit

- A smart, lightweight gilet allowing for more movement, whilst keeping you warm and dry
- 2 zipped pockets
- Full-length zip



Women's Sizes
32"
34"
36"
38"
40"
42"
44"
46/48"

limitless®



Active Jacket

Unisex Sizes
36"
38"
40"
42"
44"
46/48"
50/52"

**Active Jacket**  
**Fabric:** Stormtex  
**Fit:** Women's and Unisex Fit



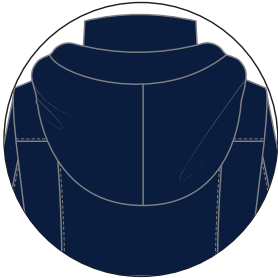
- Highly breathable
- 2 zipped pockets
- Internal hood
- Self-coloured zip pulls



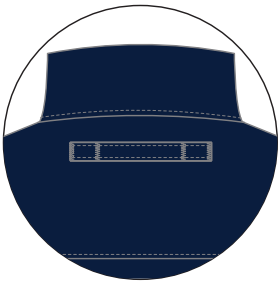
Unisex fit

Women's fit

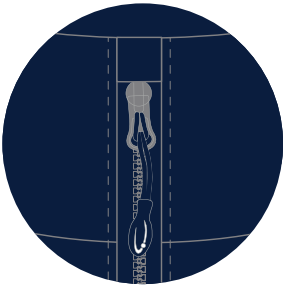
Women's Sizes
32"
34"
36"
38"
40"
42"
44"
46/48"



Hood out of collar



Hood rolled  
up into collar



Zip pull, teeth & tape





Puffer Jackets

Unisex Sizes
36"
38"
40"
42"
44"
46/48"
50/52"

**Lightweight Puffer Jacket**  
**Fabric:** Stormtex Lite  
**Fit:** Women's and Unisex Fit

- 2 zipped pockets
- Lightweight yet warm
- Full length zip



Women's Sizes
32"
34"
36"
38"
40"
42"
44"
46/48"



Sizes
32"
34"
36"
38"
40"
42"
44"
46/48"
50/52"

**Heavyweight Puffer Jacket**  
**Fabric:** Stormtex  
**Fit:** Unisex



- Detachable hood
- Storm cuffs
- 2 zipped pockets
- Full length zip



limitless®



## Sublimated Rain Jacket

Sizes
32"
34"
36"
38"
40"
42/44"
46/48"

### Sublimated Rain Jacket

**Fabric:** Bora

**Fit:** Unisex

- Sublimated, allowing a choice of design/colour
- Bora fabric is a woven polyester elastane which is water-resistant
- Full-length zip
- 2 zipped pockets
- Minimum order quantity of 10, available in 6-8 weeks



\*Hem can only be black, navy or white

**limitless®**

## Sublimated Staff Puffer Jacket

Sizes
32"
34"
36"
38"
40"
42"
44"
46"
48"

### Sublimated Staff Puffer Jacket

**Fabric:** Microfleece/Microstretch

**Fit:** Unisex

- Sublimated, allowing a choice of design/colour
- Puffer body with jersey sleeves
- Full length zip
- 1 zipped pockets
- Minimum order quantity of 10, available in 6-8 weeks



Sublimated, available in any colour/design



Touchline coat

Sizes
32"
34"
36"
38"
40"
42"
44"
46/48"
50/52"

Touchline Coat

**Fabric:** Stormtex Outer, quilted lining

**Fit:** Unisex



- Mid-length
- Breathable
- Available fully waterproof with taped seams
- 2 zipped pockets



Staff Subcoat

Sizes
32"
34"
36"
38"
40"
42/44"
46/48"
50/52"

Subcoat

**Fabric:** Stormtex

**Fit:** Unisex

- Long length
- Popper fastening
- 2 zipped pockets
- Breathable
- Perfect for the sidelines
- Sublimation possible  
- please enquire





## Sports Robe

Unisex Sizes
26 - 32"
34 - 40"
42 - 48"

### Sports Robe

**Fabric:** Stormtex Xtra

**Fit:** Unisex

- Long length
- Sherpa style fleece lining
- Versatile deep arms allowing you to change inside the coat, if needed
- 3 zipped pockets





Shorts

Sizes
28"
30"
32"
34"
36"
38"
40"

**Running Shorts**  
**Fabric:** Permatex Lite and Climaskin  
**Fit:** Women's Fit

- Climaskin undershort
- Key pocket



Women's Sizes
28"
30"
32"
34"
36"
38"
40"

**Women's PE Shorts**  
**Fabric:** Permatex Stretch  
**Fit:** Women's Fit

- Zipped pockets



Unisex Sizes
28"
30"
32"
34"
36"
38"
40"
42/44"

**Senior PE Shorts**  
**Fabric:** Permatex Lite  
**Fit:** Unisex

- Zipped pockets







# Training pants and leggings

Sizes	
WAIST	LEG
28"	28 OR 31 OR 33"
30"	28 OR 31 OR 33"
32"	28 OR 31 OR 33"
34/36"	28 OR 31 OR 33"
38/40"	31 OR 33"
42/44"	31 OR 33"

**Training pants**  
**Fabric:** Performatex  
**Fit:** Women's Fit



- Polycotton lining
- Side-zip entry to enable easy changing of footwear



Women's Sizes
28"
30"
32"
34"
36"
38"
40"

**Fitness Leggings**  
**Fabric:** Climaskin Xtra  
**Fit:** Women's Fit

- Allows for more flexibility



Sizes	
WAIST	LEG
28"	28 OR 31 OR 33"
30"	28 OR 31 OR 33"
32"	28 OR 31 OR 33"
34/36"	28 OR 31 OR 33"
38/40"	31 OR 33"
42/44"	31 OR 33"

**Pro-Fit Training Pants**  
**Fabric:** Thermotex Lite  
**Fit:** Unisex

- Warmer and more fitted

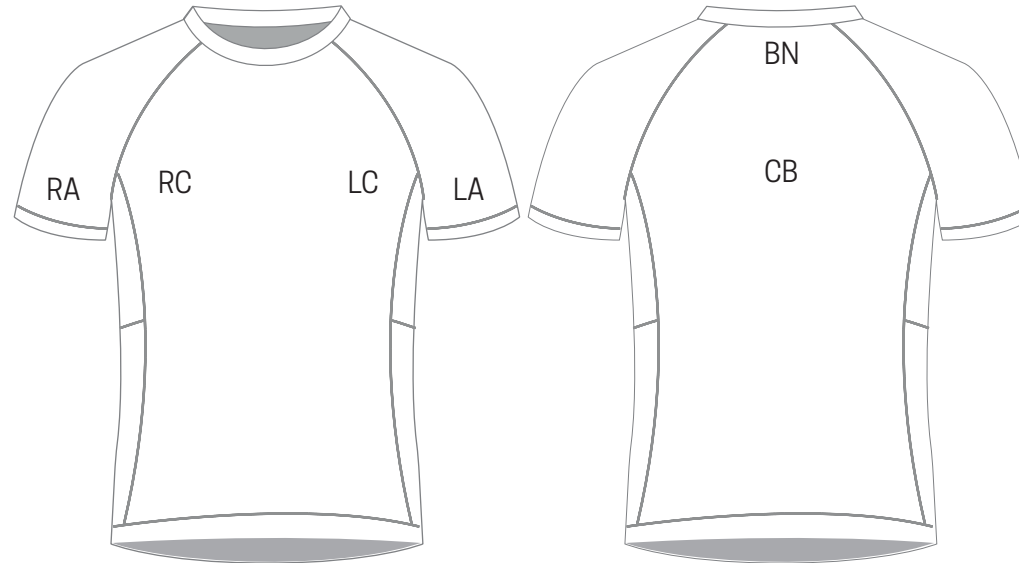




## Personalisation

You can personalise your staff kit in a variety of ways, with the school name and staff initials amongst our most popular options. Decoration locations can be seen below:

RA = Right Arm  
LA = Left Arm  
RC = Right Chest  
LC = Left Chest  
CB = Centre Back  
BN = Back of Neck





## Fabrics

We don't cut corners; our buyers work with some of the world's leading fabric suppliers, renowned for operating at the forefront of technical innovation.

Our staffwear uses the same fabrics as our core school curriculum garments because we know that your kit still needs to work hard to keep you warm, dry and comfortable. To enable this, our fabrics incorporate unique properties with built up layers, shown in the diagrams opposite.

Recycled Polyester

From 2023, almost all of our core curriculum garments will be made with recycled polyester, with a view to reducing our impact on the world. All garments including recycled yarn are labelled in this brochure and we're working on increasing the number of staff garments with recycled yarn. Please see our Environmental Impact Report at [www.schoolblazer.info/wecare](http://www.schoolblazer.info/wecare) for more information.

### ClimasSkin

Climaskin incorporates spandex and moisture transfer properties to wick moisture away, and a smooth upper surface to promote ease of movement



#### INSIDE

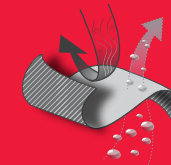
Wicking fabric quickly transports moisture away

#### TOP SURFACE

Smooth upper surface easily allows moisture to escape, and minimises friction between layers

### Performatex

This technical outer layer is soft, flexible and warm on the inside – while its waterproof qualities keep both rain and moisture out



#### INSIDE

Fine inner coating allows ease of movement and breathability, while keeping out wind and cold

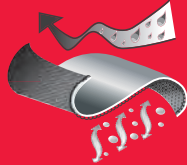
#### TOP SURFACE

Hydrophobic surface coating ensures rain runs straight off, while allowing moisture to escape



## Thermotex

Thermotex combines a hydrophobic outer surface with a fleece inner layer, keeping the rain out and warmth in.



### INSIDE

Fine fleece layer traps warm air close to the body

### TOP SURFACE

Hydrophobic coating repels water and resists pilling

## Stormtex

Stormtex uses the latest fabric technology to keep rain out, while an inner breathable coating draws heat and moisture away from the body.



### INSIDE

Unique breathable coating ensures you stay cool and dry, whatever the weather

### TOP SURFACE

Water and wind proof outer layer prevents rain from soaking in

## Performashell

A versatile, breathable outer layer, Performashell contains a unique three tier fabric that conserves warmth and protects against wind and rain.



### INSIDE

Brushed fleece traps air to keep you warm

### MIDDLE

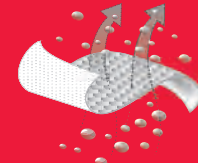
A unique membrane keeps wind and rain out while allowing your body to breathe

### TOP SURFACE

A hydrophobic coating ensures surface water just runs off

## Hydrocool

Hydrocool combines an absorbent inner layer with a water resistant outer layer to provide exceptional moisture management and protection.



### INSIDE

Brushed hydrophilic wicking layer absorbs moisture, drawing it away from the skin

### TOP SURFACE

Durable hydrophobic mesh surface resists abrasion and allows water vapour to pass through

# limitless®



**STAFFWEAR  
2024/2025**

