



# Georgia Student Mental/Behavioral Health Services Grant

## Overview of Funding

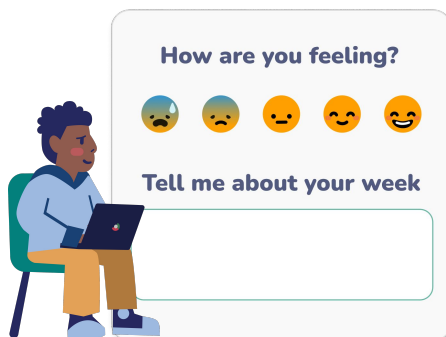
Georgia has made a significant investment in student well-being in its FY26 Budget, dedicating \$19.6M to expand mental and behavioral supports in 6-12 schools. This funding reflects the state's commitment to supporting the needs of the whole child and addressing non-academic barriers to student learning and success.

Through the Student Mental/Behavioral Health Services Grant, **each LEA receives \$20,000 per 6-12 public school site** to build or strengthen comprehensive school-based mental/behavioral health services. **Allowable funding uses include:**

- Contracting with local mental health agencies
- Contract with telemedicine/telemental health provider
- Contract with an individual mental health professional
- Fund a school district employee
- **Purchase curriculum and intervention materials**

You can access additional information about the grant [here](#).

Sown To Grow can strengthen your whole-child support system by elevating student voice and delivering clear, actionable insights to ensure every student is seen, supported, and learning at their best.



### Tier 1 Reflection Platform

Create supportive classroom environments, build growth mindset, & apply SEL skills with a simple **3-5 minute** reflection routine.



### CASEL-Aligned K-12 Curriculum & Pre/Post Growth

Ready-to-teach weekly Tier 1 & 2 lessons with academic pathways & family connections. ([View detailed scope](#)).



### Proactive MTSS Dashboards & Alerts

Proactively identify Tier 2 & 3 needs with alerts & insights for small groups & individual support, then monitor well-being & growth.

We partner with schools and LEAs across the country to build proactive support systems that strengthen student well-being and school climate



**OAKLAND UNIFIED  
SCHOOL DISTRICT**  
Community Schools, Thriving Students





**SOWN  
TO GROW**

**Every student seen, supported, & learning at their best!**



## Supporting Georgia's MTSS Framework and School Climate Vision

Layers of Support

Improved Attendance

Student-Staff Relationships

Using Data to Help Students

Positive school Climate

Student Well-being



How are you feeling?



Tell me about your week



Student



I'm stressed because practice goes late and I get too tired to finish my homework.

Teacher

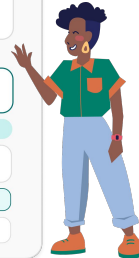
It seems like you have a lot to juggle, and that can be very challenging.

Reply

I appreciate you opening up to me so that I can help.

Let's talk more. We can come up with a plan.

Sorry to hear that! How can I help?



## A Scalable Tier 1 Practice to Ensure EVERY student is Heard

Students share how they are doing on a weekly basis and receive responses from teachers. This gives students an approachable space to **build strong relationships** with teachers and practice life skills.

## Tier 2 & 3 Support Resources

Our system identifies groups of students reflecting on common themes that indicate they may need additional Tier 2 or 3 support, then recommend lessons & resources for working with those students. Schools can also create custom MTSS groups to ensure that **all students receive the targeted support they need**.

Tier 2/3 Group: **Bullying**

Maksim L.



Raveena S.



Colin G.



**Academic Stress**

LaKisha H.



Sophia R.



## Understand student well-being & needs in real-time

School & district leaders can access **real-time reports on student well-being**. They can keep a pulse on the culture of the school, follow the progress of students receiving additional support, and get **alerts** when a student reflects on something that may need urgent, Tier 3 attention.

This system leads to measurable improvements in student well-being and school climate. Click links to research insights below, or view our impact studies [here](#).

Improved Sense of Belonging

Improved Attendance

SEL & Academic Growth

Let's discuss your goals for whole-child support.

**Click to Book a Meeting!**

**Our Impact is Researched & Funded By:**



US Department of Education



**Digital Promise**  
Accelerating Innovation in Education



The National Science Foundation

**NewSchools**