

# John Therry Catholic College Timetable



Effective 30 November 2025

## Morning services

### 840 From Gregory Hills (with Campbelltown connection)

840 Gregory Hills Village Cct Shops	07:22
840 Claymore Badgally Rd opp Thomas Burke Reserve	07:33
840 Campbelltown Station Stand G	07:38

**Transfer from Route 840 bus to Route 888 bus at Campbelltown Station**

888 Campbelltown Station Stand B	07:59
888 John Therry Catholic College	08:20

### 886 From Glen Alpine

Glen Alpine Heritage Way after Englorie Park Dr	08:01
Glen Alpine Heritage Way opp Abington Cres	08:03
Glen Alpine Abington Reserve, Heritage Way (opp)	08:05
John Therry Catholic College	08:16

### 888 From Campbelltown

Campbelltown Station Stand B	07:16	07:39	07:59
Macarthur Square Kellicar Rd, Stand 4	–	–	08:06
Macarthur Square Gilchrist Dr (opp)	07:21	07:44	08:07
Thomas Reddall H.S., Woodhouse Dr (opp)	07:24	07:47	08:09
Woodhouse Dr opp Wickfield Cct	07:25	07:48	08:10
Copperfield Dr before Dickens Rd	07:27	07:50	08:12
John Therry Catholic College	07:31	07:56	08:16

### 898 From Gledswood Hills (with Currans Hill connection)

898 Camden Valley Way opp Catherine Fields Rd	06:56
898 Sir Warwick Fairfax Dr opp Harrison Ave	07:00
898 Harrington Grove Country Club, Harrington Pkwy	07:04
898 Harrington Park Harrington Plaza, Fairwater Dr	07:11
898 Currans Hill Narellan Rd after Tramway Dr	07:23

**Transfer from Route 898 bus to Route 6016 bus at Narellan Rd after Tramway Dr, Currans Hill**

6016 Currans Hill Narellan Rd after Tramway Dr	07:56
6016 John Therry Catholic College	08:08

### 1013 From Bringelly (with Narellan connection)

1013 Bringelly Kelvin Park Dr at Medich Pl	06:48
1013 Bringelly Wentworth Rd Bus Bay	07:11
1013 Narellan Yandelora School, Richardson Rd	07:30

**Transfer from Route 1013 bus to Route 6016 bus at Yandelora School, Richardson Rd**

6016 Narellan Yandelora School, Richardson Rd	07:46
6016 John Therry Catholic College	08:08

### 1021 From Casula (with Narellan connection)

1021 Casula Myall Rd at Furlong Ave	06:37
1021 Casula Hume Hwy opp Box Rd	06:43
1021 Forest Lawn Cemetery, Camden Valley Way	06:53
1021 Narellan Yandelora School, Richardson Rd	07:30

**Transfer from Route 1021 bus to Route 6016 bus at Yandelora School, Richardson Rd**

6016 Narellan Yandelora School, Richardson Rd	07:46
6016 John Therry Catholic College	08:08

### 1024 From Prestons (with Narellan connection)

1024 Prestons Braidwood Dr at Wagga Wagga St	06:48
1024 Rossmore 785 Bringelly Rd	07:09
1024 Narellan Yandelora School, Richardson Rd	07:30

**Transfer from Route 1024 bus to Route 6016 bus at Yandelora School, Richardson Rd**

6016 Narellan Yandelora School, Richardson Rd	07:46
6016 John Therry Catholic College	08:08

### 1049 From Bardia (with Narellan connection)

1049 Bardia Public School MacDonald Rd (opp)	06:36
1049 Leppington Ingleburn Rd after Camden Valley Way	06:52
1049 Catherine Field Deepfields Rd at Barry Ave	07:13
1049 Narellan Yandelora School, Richardson Rd	07:30

**Transfer from Route 1049 bus to Route 6016 bus at Yandelora School, Richardson Rd**

6016 Narellan Yandelora School, Richardson Rd	07:46
6016 John Therry Catholic College	08:08

Continued on next page

Page 1 of 6



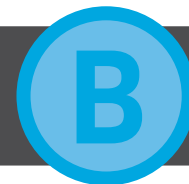
The bus services contained in this timetable are run by Transit Systems.

For the most up-to-date times and travel options, use the Trip Planner or Departures at [transportnsw.info](https://transportnsw.info). There may be more travel options available than those shown in this timetable.

Times are shown in 24-hour time (e.g. 5am = 05:00, 5pm = 17:00).

Information contained in this timetable is subject to change without notice. It does not include times for minor stops, short term changes, real-time information or any disruption alerts.

# John Therry Catholic College Timetable



Effective 30 November 2025

## Morning services (continued...)

<b>5021</b>	<b>From Appin</b>	
	Appin Toggerai St opp St James Pl	07:45
	John Therry Catholic College	08:02
<b>5023</b>	<b>From Bradbury</b>	
	Bradbury Fetterplace Aquatic Centre, The Parkway	08:04
	John Therry Catholic College	08:26
<b>5024</b>	<b>From St Helens Park</b>	
	St Helens Park Reserve Kellerman Dr	07:55
	Ambarvale Campbelltown Church of Christ, Woodhouse Dr	08:09
	Ambarvale Thomas Reddall High School, Woodhouse Dr	08:13
	Ambarvale Amber Cottage, Crispsparkle Dr (opp)	08:19
	John Therry Catholic College	08:24
<b>5047</b>	<b>From Appin</b>	
	Appin Toggerai St opp St James Pl	07:02
	Appin St Marks Anglican Church, Church St	07:04
	Rosemeadow Copperfield Dr after Appin Rd	07:20
	John Therry Catholic College	07:24

<b>6008</b>	<b>From Camden South (with Camden connection)</b>	
<b>6008</b>	Camden Belgenny Ave opp Kelloway Ave	07:11
<b>6008</b>	Camden John St before Argyle St	07:30
<i>Transfer from Route 6008 bus to Route 6016 bus at John St before Argyle St, Camden</i>		
<b>6016</b>	Camden John St before Argyle St	07:34
<b>6016</b>	John Therry Catholic College	08:08
<b>6016</b>	<b>From Camden</b>	
	Camden John St before Argyle St	07:34
	Currans Hill Narellan Rd after Tramway Dr	07:56
	John Therry Catholic College	08:08

### Explanation of definitions and symbols

**a** bus then runs express to Yandelora School, Richardson Rd

Morning bus route map - see next page

Page 2 of 6



The bus services contained in this timetable are run by Transit Systems.

For the most up-to-date times and travel options, use the Trip Planner or Departures at [transportnsw.info](https://transportnsw.info). There may be more travel options available than those shown in this timetable.

Times are shown in 24-hour time (e.g. 5am = 05:00, 5pm = 17:00).

Information contained in this timetable is subject to change without notice. It does not include times for minor stops, short term changes, real-time information or any disruption alerts.



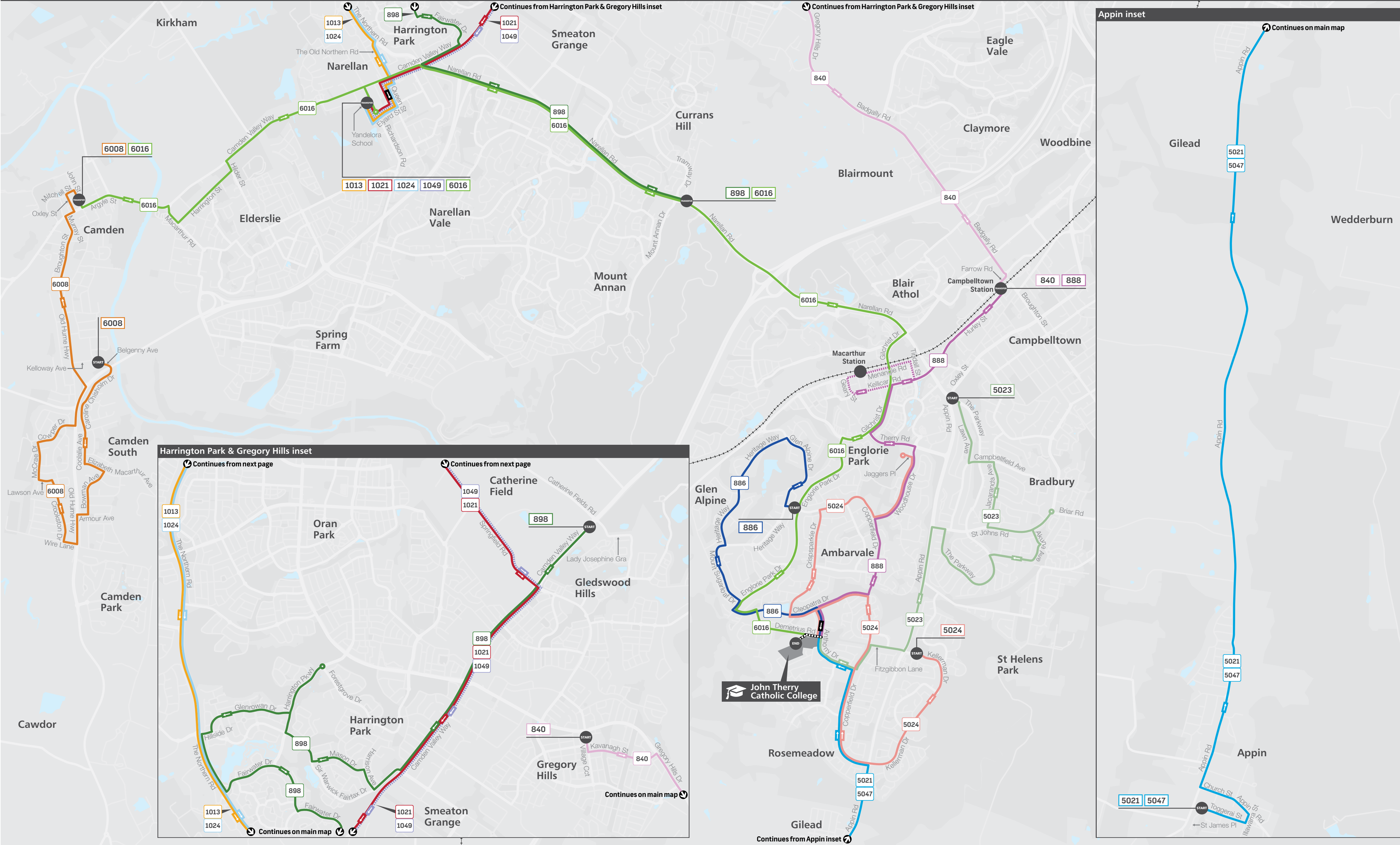
# John Therry Catholic College Timetable



Effective 30 November 2025

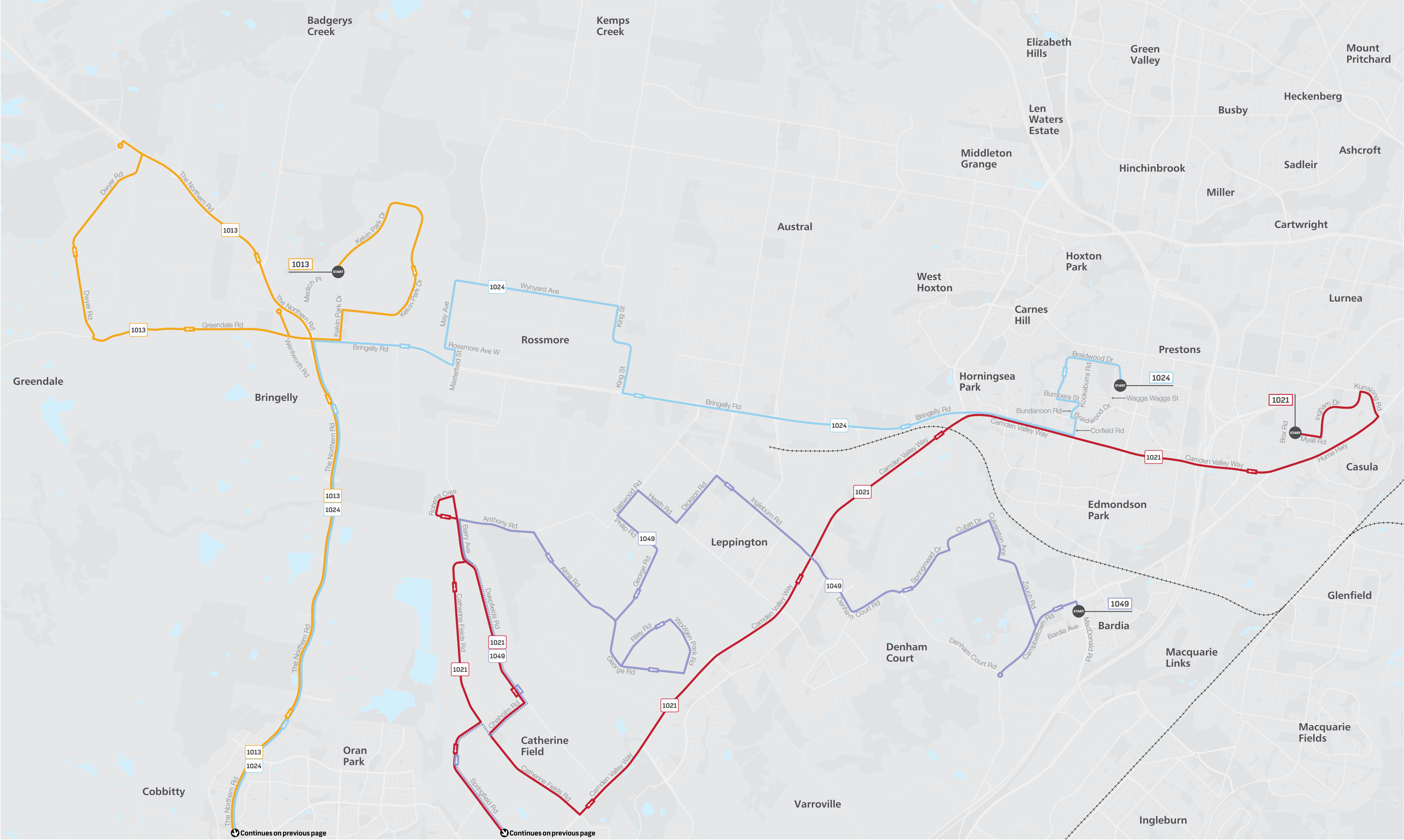
Morning bus route map

Page 3 of 6



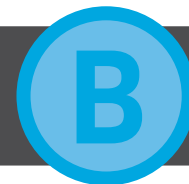
The bus services contained in this timetable are run by Transit Systems.  
For the most up-to-date times and travel options, use the Trip Planner or Departures at [transportnsw.info](https://transportnsw.info). There may be more travel options available than those shown in this timetable.  
Times are shown in 24-hour time (e.g. 5am = 05:00, 5pm = 17:00).  
Information contained in this timetable is subject to change without notice. It does not include times for minor stops, short term changes, real-time information or any disruption alerts.





The bus services contained in this timetable are run by Transit Systems.  
For the most up-to-date times and travel options, use the Trip Planner or Departures at [transportnsw.info](https://transportnsw.info). There may be more travel options available than those shown in this timetable.  
Times are shown in 24-hour time (e.g. 5am = 05:00, 5pm = 17:00).  
Information contained in this timetable is subject to change without notice. It does not include times for minor stops, short term changes, real-time information or any disruption alerts.

# John Therry Catholic College Timetable



Effective 30 November 2025

## Afternoon services

### 886 To Glen Alpine

John Therry Catholic College	15:23
Glen Alpine Heritage Way after Englorie Park Dr	15:30
Glen Alpine Heritage Way opp Abington Cres	15:33
Glen Alpine Abington Reserve, Heritage Way (opp)	15:36
Rosemeadow Cleopatra Reserve, Crispsparkle Dr (opp)	15:42
Ambarvale Gargery Reserve, Copperfield Dr	15:45

### 888 To Campbelltown

John Therry Catholic College	15:17	–
Rosemeadow Public School Copperfield Dr	–	16:42
Rosemeadow Reserve Copperfield Dr (opp)	15:21	16:43
Ambarvale Copperfield Dr at Harthouse Rd	15:24	16:46
Ambarvale Woodhouse Dr before Wickfield Cct	15:27	16:49
Macarthur Square Kellicar Rd	15:33	16:55
Campbelltown Station Stand B	15:41	17:03

### 888 To Rosemeadow

John Therry Catholic College	15:15
Rosemeadow Market Place Fitzgibbon Lane	15:20
St Helens Park Kellerman Dr after St Helens Park Dr	15:23
Rosemeadow Copperfield Dr after Appin Rd	15:26

### 5532 To Campbelltown

John Therry Catholic College	15:15
Campbelltown Station Stand D	15:27

### 5533 To Campbelltown

John Therry Catholic College	15:22
Campbelltown Station Stand C	15:40

### 5534 To Appin

John Therry Catholic College	15:32
Rosemeadow Copperfield Dr before Appin Rd	15:34
Appin Public School Appin Rd (opp)	15:50
Appin Toggerai St opp St James Pl	15:55

### 5535 To Bradbury

John Therry Catholic College	15:40
Bradbury Fetterplace Aquatic Centre, The Parkway (opp)	15:55

### 5536 To Ruse

John Therry Catholic College	15:40
Ruse Oberon Reserve, Junction Rd	16:05

### 6521 To Camden

John Therry Catholic College	<b>b</b> 15:15
Glen Alpine Community Centre Englorie Park Dr	15:23
Mount Annan High School Welling Dr (opp)	15:43
Camden St Paul's Catholic Primary School, John St	16:07

## Explanation of definitions and symbols

**b** bus runs express to Glen Alpine Community Centre, Englorie Park Dr

Afternoon bus route map - see next page

Page 5 of 6



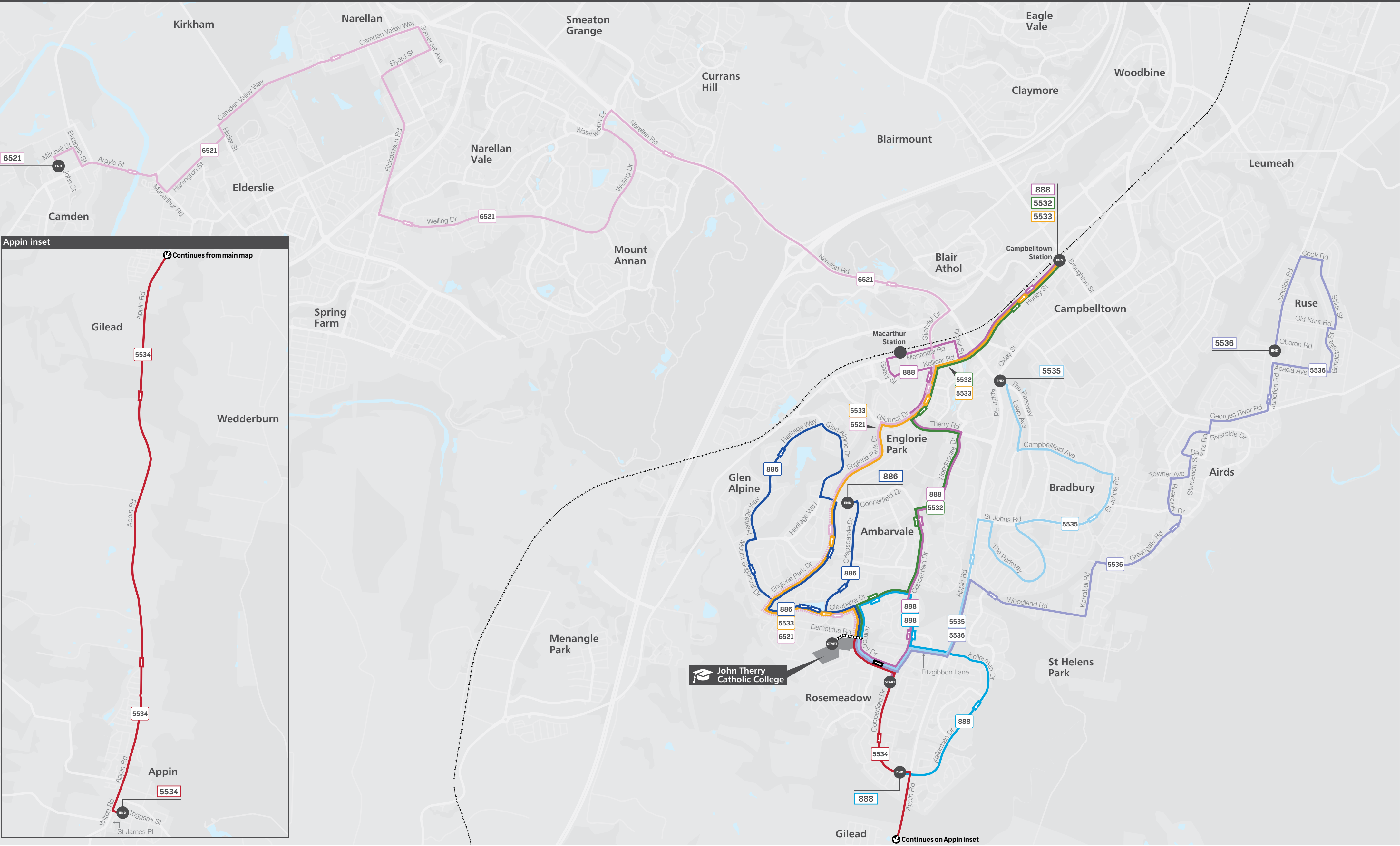
The bus services contained in this timetable are run by Transit Systems.

For the most up-to-date times and travel options, use the Trip Planner or Departures at [transportnsw.info](https://transportnsw.info). There may be more travel options available than those shown in this timetable.

Times are shown in 24-hour time (e.g. 5am = 05:00, 5pm = 17:00).

Information contained in this timetable is subject to change without notice. It does not include times for minor stops, short term changes, real-time information or any disruption alerts.





# Tap on and tap off every time

because it tells us how many people are using public transport. This allows us to better plan services for you.



It is a condition of the *School Pass Terms* and the *Student Codes of Conduct* when travelling that students in possession of the School Opal card must tap on and tap off every time when using public transport to travel to and from school. Per section 3.2 of the Opal Privacy Policy, Transport for NSW collects information from taps on and taps off to support coordination, planning and policy development for transport, transport services and transport infrastructure.