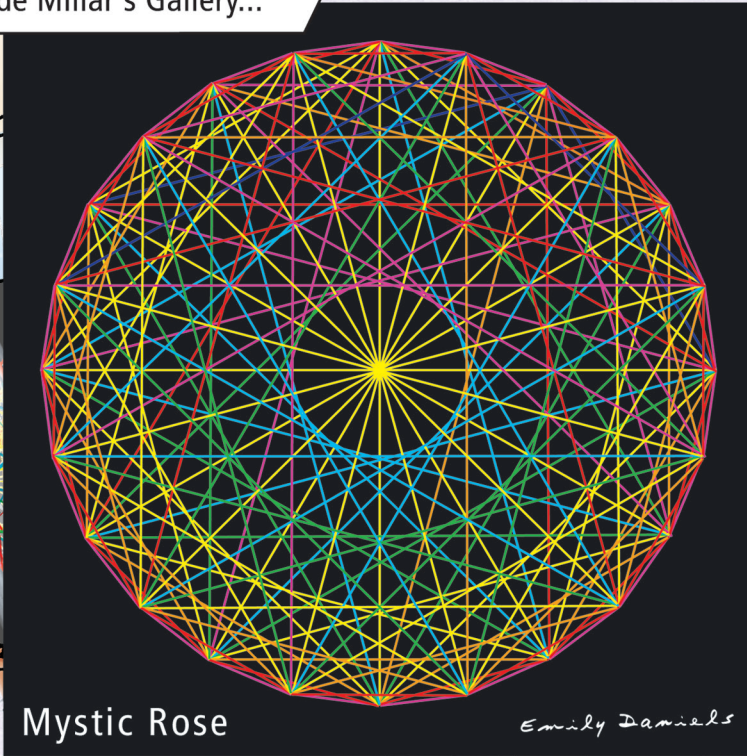


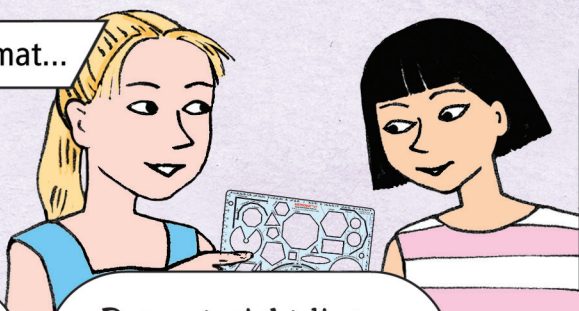
Mystic Investigation

Use your Mathomat to investigate the mystic rose.

Allie and Tess were at the mall outside Millar's Gallery...



Later, Tess got out the Mathomat...

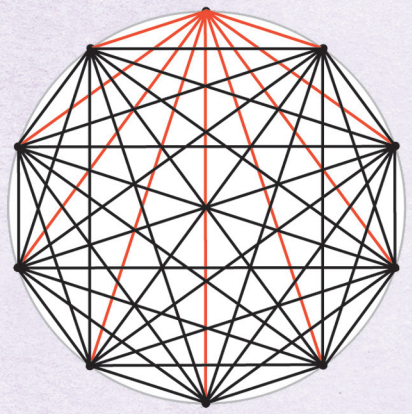
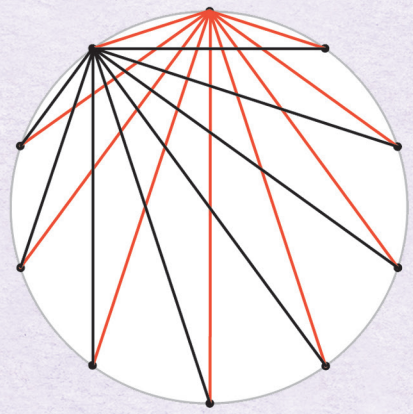
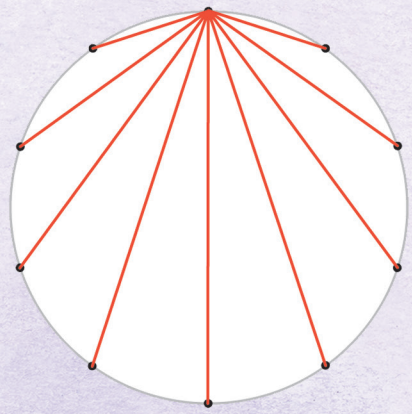


One less
You'll be drawing one less line each time.
Can you think why?

Draw a circle in pencil.
Mark it off in equally spaced parts.

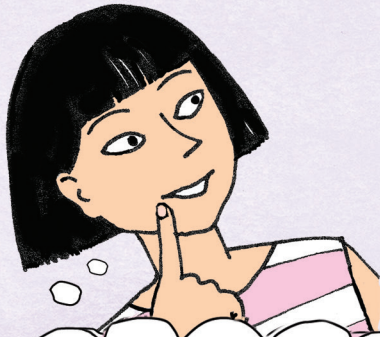
Draw straight lines joining the top dot to every other dot.

Do this for each dot.

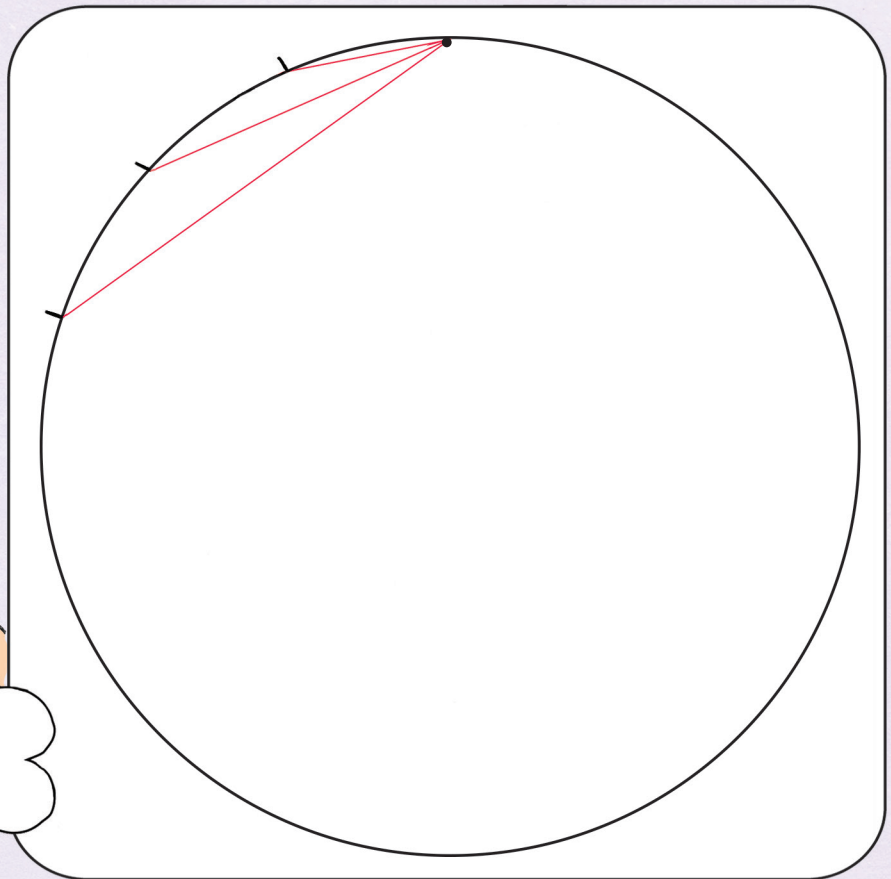


Incomplete Rose

To complete this Mystic Rose use the protractor on your Mathomat to measure degrees from the centre of the circle.



I need to work out how many degrees apart the dots should be.

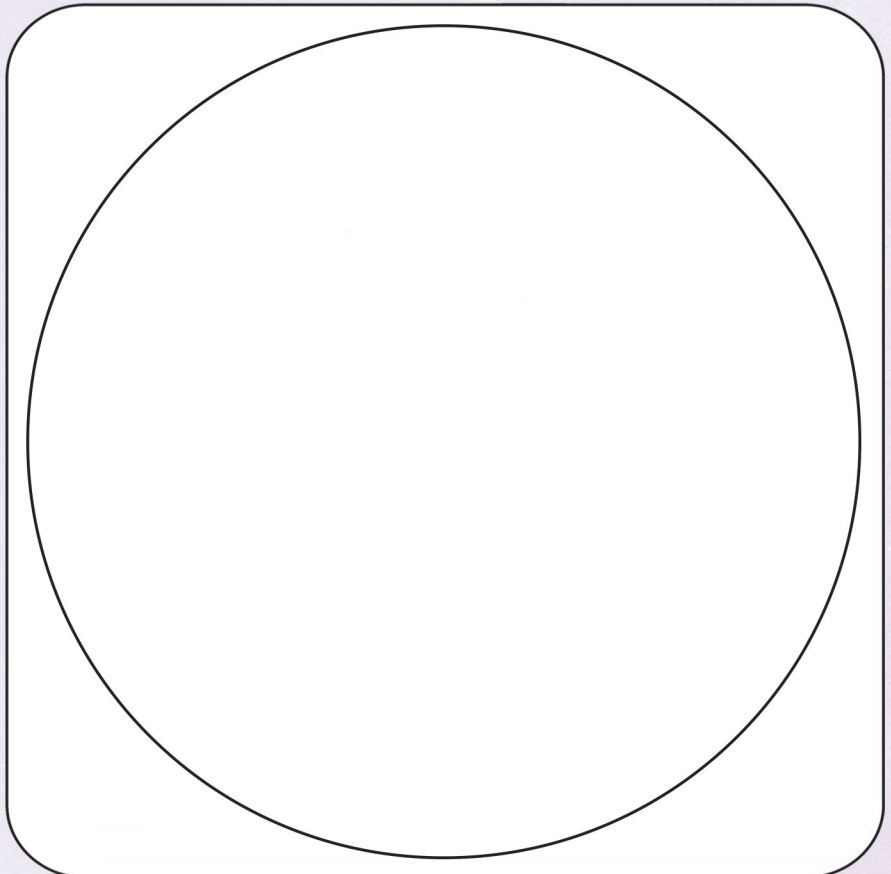


Draw a Rose

Use the protractor to draw the Mystic Rose with 18 points. How many degrees apart should the dots be?



I'm going to draw a Mystic Rose with 30 equally spaced points. Can you predict how many lines I will need to draw to make it?



You can also print out this investigation from MAC (10.2 pages 1 & 2).