

CLASS 2

Building Product Information Sheet

Product name:

Roofing Industries Slimclad™ Profiled Metal Wall Cladding

Product line *(the product line from which the product is customised):***Roofing Industries Slimclad™ Profiled Metal Wall Cladding**

Roofing Industries Slimclad™ is manufactured in a range of substrate materials to meet NZ's exposure zones and are available in the following base metal materials:

- ColorCote® Zinacore™
- Colorsteel® Endura®
- ColorCote® Magnaflow™
- Colorsteel® Maxx®
- Colorsteel® Maxam®
- Zinalume®
- Galvsteel®

Other base materials may be available through special indent, contact Roofing Industries to discuss.

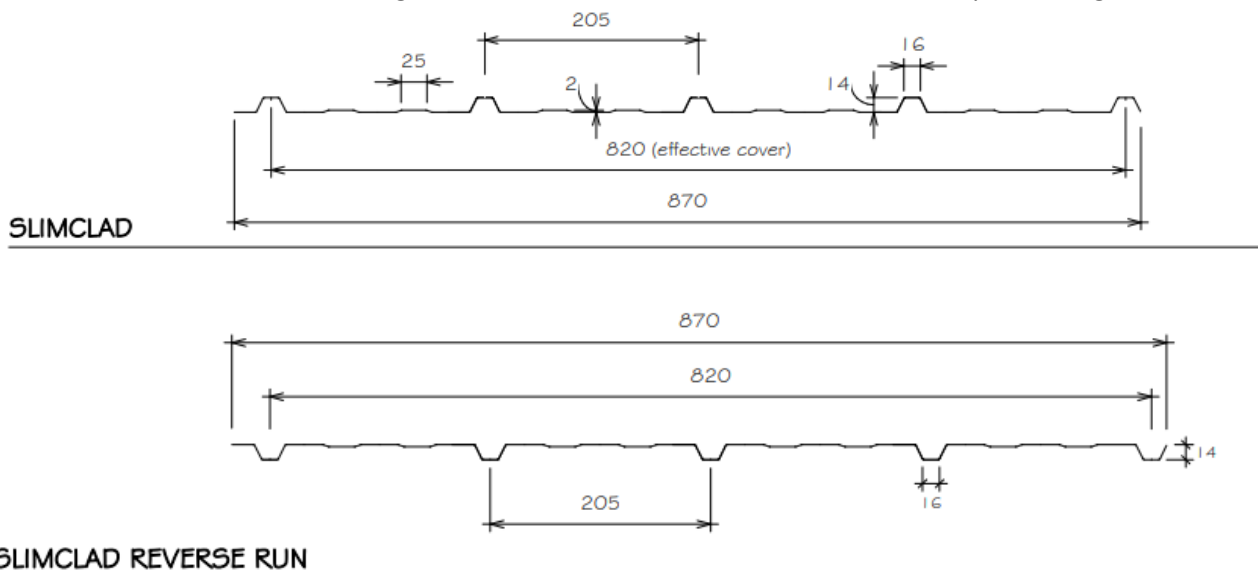
Product Description and its intended use (measurements, materials, usage):

Roofing Industries Slimclad™ is a trapezoidal, long-run metal wall profile manufactured from the base metal materials listed above. Slimclad™ may also be used for fencing and roofing of low importance level structures such as garden sheds or covered walkways, patios etc., for more information refer to Roofing Industries Slimclad™ brochure available on www.roof.co.nz.

Roofing Industries Slimclad™ sheets are available in the following sizes:

- Thickness (mm): Steel base, 0.40mm and 0.55mm
- Width (mm): Effective Cover – 815mm & Sheet Width – 840mm

Slimclad is available with ribs facing out as standard, or 'reverse-run' with the wide pans facing outwards:



All dimensions are nominal.

Product identifier:

Roofing Industries Slimclad™

(Refer to Roofing Industries Slimclad™ Brochure or Profile Technical Summary (PTS) on www.roof.co.nz for more information).

Place of manufacture Aotearoa New Zealand



Overseas



Legal and trading names of the manufacturer(s):

Roofing Industries Limited

Legal and trading names of the importer (if applicable):

N/A

Address for service:

Auckland (Head Office) 5 John Glenn Avenue, North Harbour 0751. Ph:(09) 414 4585. E:auckland@roof.co.nz.

Whangarei 4A Fraser Street, Whangarei 0112. Ph: (09) 437 2040. E:northland@roof.co.nz.

Pukekohe 212 Manukau Road, Pukekohe, South Auckland 2120. Ph: (09) 238 0050. E:franklin@roof.co.nz.

Hamilton 63 Tasman Road, Avalon, Hamilton 3200. Ph: (07) 849 5115. E:waikato@roof.co.nz.

Tauranga 80 Portside Drive, Mount Maunganui, Tauranga 3116. Ph: (07) 929 7034. E:tauranga@roof.co.nz.

Taupo 1158 Rakaunui Road, Taupo 3351. Ph: (07) 376 7971. E:taupo@roof.co.nz.

Hawkes Bay 5 Poporo Way, Longlands, Hastings Napier 4175. Ph: (06) 281 2586. E:napier@roof.co.nz.

New Plymouth 11 Oropuriri Road, Waiwhakaiho, New Plymouth. Ph: (06) 758 3003. E:taranaki@roof.co.nz.

Palmerston North: 653 Tremaine Avenue, Palmerston North 4410. Ph: (06) 353 8480. E:central@roof.co.nz.

Wellington: 22 Cornish Street, Korokoro, Lower Hutt 5012. Ph: (04) 238 4390. E:wellington@roof.co.nz.

Blenheim: 5 Kendrick Road, Riverlands 7274. Ph: (03) 339 2324. E:blenheim@roof.co.nz.

Christchurch: 12 William Lewis Drive, Sockburn, Christchurch 8042. Ph: (03) 339 2324. E:christchurch@roof.co.nz.

Southern Lakes: 3 Proctor Way, Cromwell 9310. Ph: (03) 928 6869. E:cromwell@roof.co.nz.

Invercargill: 133 Bill Richardson Drive, Avenal, Invercargill 9810. Ph: (03) 9286869. E:southland@roof.co.nz.

Dunedin: 33 Strathallan Street, South Dunedin, Dunedin 9012. Ph: (03) 9286869. E:otago@roof.co.nz.

Website:

www.roof.co.nz

email address

office@roof.co.nz

NZBN (if applicable):

9429037458621

Relevant Building code Clauses:

- **Clause B1 Structure:** Performance B1.3.3(a), B1.3.3(b), B1.3.3(g), B1.3.3(h)
- **Clause B2 Durability:** Performance B2.3.1(b)(i)
- **Clause C3 Fire affecting areas beyond the fire source:** Performance C3.9
- **Clause E2 External moisture:** Performance E2.3.1, E2.3.2
- **Clause F7 Hazardous Building Materials:** F2.3.1

Statement of how the building product is expected to contribute to compliance:

Design requirements to comply with the relevant clauses of the NZBC

B1 – Structure

- To comply with NZBC Clause B1 – Structure, Roofing Industries Slimclad™ shall be fixed in accordance with the Load Span Graphs and fixing patterns and detailed in:
 - Roofing Industries Slimclad™ Profile Technical Statement (PTS) or
 - Acceptable Solution E2/AS1 Clause 8.4.8 and tables 14 & 15 or
 - NZ Metal Roofing and Wall Cladding Code of Practice (COP) Section 3

B2 – Durability

- To comply with NZBC Clause B2, Slimclad™ and flashings substrate material and fasteners shall be selected in accordance with Acceptable Solution E2/AS1 Table 20: *Material Selection*.

C3 Fire:

- **ColorCote® Zinacore™** is rated as a Group 1-S when tested in accordance with ISO 5660:2002 Part 1 & Part 2.
- **ColorCote® Magnaflow™** is rated as a Group 1-S when tested in accordance with ISO 5660:2002 Part 1 & Part 2
- **ColorCote® Alumigard™** is rated as a Group 1-S when tested in accordance with ISO 5660:2002 Part 1 & Part 2
- **Colorsteel® Maxx®** is rated as a Group 1-S when tested in accordance with ISO 5660:2002 Part 1 & Part 2.
- **Colorsteel® Maxam® is rated as a Group 1-S when tested in accordance with ISO 5660:2002 Part 1 & Part 2.**
- **Colorsteel® Endura®** is rated as a Group 1-S when tested in accordance with ISO 5660:2002 Part 1 & Part 2..
- **Colorsteel® Altimate®** is rated as a Group 1-S when tested in accordance with ISO 5660:2002 Part 1 & Part 2
- **Zincalume®** is rated as a Group 1-S when tested in accordance with ISO 5660:2002 Part 1 & Part 2.
- **Galvsteel®** is rated as a Group 1-S when tested in accordance with ISO 5660:2002 Part 1 & Part 2.
- For other materials contact Roofing Industries for more information

E2 – External Moisture

- Roofing Industries Slimclad™, shall be installed and maintained in accordance with manufacturer's recommendations and details, Acceptable Solution E2/AS1 and/or the NZMRM COP in order to comply with NZBC Clause E2 – External Moisture

F7 - Hazardous Building Materials

In Accordance with MRM Pre-Painted Coil Standard – Performance Requirements (NZ Metal Roofing and Wall Cladding Code of Practice Clause 17.4.2 Part 2: Additional Criteria): *“In addition to the requirements of Part 1, all pre-painted materials must comply with the Hazardous Substances and New Organisms (HSNO) act 1996”.*

Limitations of the use of the building product:

Roofing Industries Slimclad™ is a trapezoidal, long-run metal wall cladding profile. Slimclad™ may also be used for fencing and roofing of low importance level structures, such as garden sheds or covered walkways, patios etc., for more information refer to Roofing Industries Slimclad™ data sheet available on www.roof.co.nz. Roofing and wall cladding used and installed in accordance with Roofing Industries Slimclad™ Data sheet and details.

Oil Canning

Oil canning is the visible waviness or undulations in the flat areas of a metal roof cladding, wall cladding or wide flat panel flashings. The apparentness of these undulations can be affected by several factors such as the angle of viewing, direction and clarity of the light, sheet length, colour and temperature. In addition, the high gloss levels of brand-new sheets can highlight these undulations but with time natural weathering reduces reflectivity which in turn reduces the visible effect of canning.

The property / building owner, builder and specifier must be aware that these undulations can occur in wide pan profiles. Please note canning is aesthetic in nature only and does not affect the performance or material warranty of the cladding.

The inclusion of optional swaging may assist in reducing canning. Some paint finishes, colours and / or higher gloss levels can show more canning than others and as such lower gloss paint finishes are recommended.

Oil Canning is also covered in MBIE's Guide to tolerances for New Residential Construction, which states: *"Oil canning is a common occurrence with products which have standing seam or wider profiles patterns. This is not considered a defect and will become less apparent with weathering."* It goes on to also state: *"Creases from secret fix clips are not considered a defect and will become less apparent with weathering"*.

Installation requirements:

Refer to:

- Roofing Industries Slimclad™ Data Sheet available on roof.co.nz
- Roofing Industries Slimclad™ Details available on roof.co.nz: [Slimclad™ - Roofing Industries](#)
- NZMRM Installation Guide: Metal Longrun Roofing and Cladding available on roof.co.nz
- E2/AS1 where applicable

Installation of Roofing Industries profiled metal roofing and wall cladding shall be carried out by a suitably qualified and experienced metal roofing and cladding installer / LBP.

Maintenance requirements:

Refer to:

- Roofing Industries maintenance recommendations available on www.roof.co.nz
- NZ Steel Colorsteel® / PCC ColorCote® Maintenance recommendations available on available on www.roof.co.nz
- Specific maintenance requirements detailed on ColorCote®/Colorsteel® warranty document for the product supplied.
- NZMRM Code of Practice (COP)

Is the building product/building product line subject to warning or ban under section 26?

Yes

☐

No

☒

If yes description of the warning or ban under section 26:

N/A

Date:

1 July 2025

Version:

2.1

Disclaimer: Any advice given in this document is given in good faith. Roofing Industries makes no representations or warranties about the information or design advice provided (whether contained in a document, or other cited or related documents) including (but not limited to) whether the information, and any materials referred to, are fit for purpose. The user is responsible for ensuring that the information, and any

materials referred to, are fit for the purpose for which they are intended to be used. Except as required by law, Roofing Industries is not liable for any cost, loss, claim or expense incurred by any person as a result of any person using or relying on the information in this document.

Appendix – Links to suppliers' websites of key accessory products contributing to the roofing & wall cladding system:

Fasteners: Screws, nails, rivets:

- Konnect: [Industrial Fasteners and Hardware Online | Konnect Fastening Systems](#)
- Bremick: [Home | Bremick Fasteners](#)

Underlays: Kraft papers, Synthetic underlay, Foils

- Dristud: [DriSpace - DriSpace](#)
- Thermakraft: [Thermakraft](#)

Netting: 50mm & 75mm underlay support netting, safety mesh

- Paul Industries: [Bayonet Wire Fencing and Construction Products](#)
- Thermakraft: [Thermakraft](#)

Translucent sheeting: (clear lights), Fiberglass, polycarbonate:

- Ampelite: [ampelite.co.nz/Home.php](#)
- Alsynite: [Home - Alsynite One NZ Ltd](#)

Boot Flashings:

- Aquaseals / Aquadapts:
[Industrial Fasteners and Hardware Online | Konnect Fastening Systems](#)