

## PERIPHERAL INTERVENTION



# Braidin<sup>™</sup> Pro

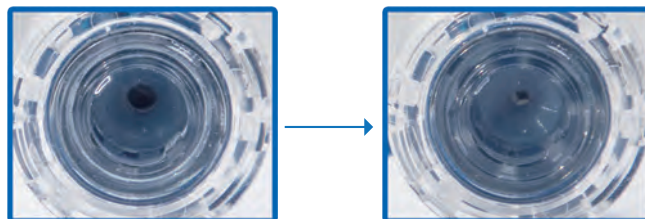
## Adjustable Valve Guiding Sheath

# FOR MORE EFFICIENT DEVICE EXCHANGES

One and only large bore sheath with adjustable hemostasis valve, specifically designed for interventional procedures using large device (TAA, AAA, TAVI, TPVI etc.), minimizing the blood loss.

## » Unique Variable Hemostasis Valve

- Simple click to adjust the valve
- Provide effective hemostasis to deliver various sizes of devices



Push to make the valve smaller, side press to release to the declared size

## » Optimized Sheath Structure

- 3 layers structure with excellent kink resistance
- Durable hydrophilic coating ensures a smooth placement
- Sheath and Dilator
  1. Tapered sheath tip guarantees a smooth transition between sheath and dilator, reduce friction during insertion
  2. A soft sheath and atraumatic tip for safe insertion

## » Radiolucent sheath with distal marker provides outstanding visibility

## » Full range of sizes to meet clinical challenges



## ORDERING INFORMATION

Length	10F	12F	14F	16F	18F	20F	22F	24F	26F
15cm	92100151	92120151	92140151	92160151	92180151	92200151	92220151	92240151	92260151
25cm	92100251	92120251	92140251	92160251	92180251	92200251	92220251	92240251	92260251
30cm	92100301	92120301	92140301	92160301	92180301	92200301	92220301	92240301	92260301
35cm	92100351	92120351	92140351	92160351	92180351	92200351	92220351	92240351	92260351
45cm	92100451	92120451	92140451	92160451	92180451	92200451	92220451	92240451	92260451
55cm	92100551	92120551	92140551	92160551	92180551	92200551	92220551	92240551	92260551
65cm	92100651	92120651	92140651	92160651	92180651	92200651	92220651	92240651	92260651

# NXT MED

Official Distribution Partner

**Address:** Fritz-Vomfelde-Straße 6 40547 Düsseldorf, Germany  
**Email:** hello@nxt-med.com  
**TEL:** +49 211 58678600



@NXT MED



www.nxt-med.com

# APT Medical

Manufacturer

**Address:** Room 601, Building B, Tongfang Information Port, No.11 Langshan Road, Nanshan District, Shenzhen, P.R. of China  
**Email:** international@aptmed.com  
**TEL:** +86 755-83591013

@APT Medical



www.apmedical.com

CE 1639